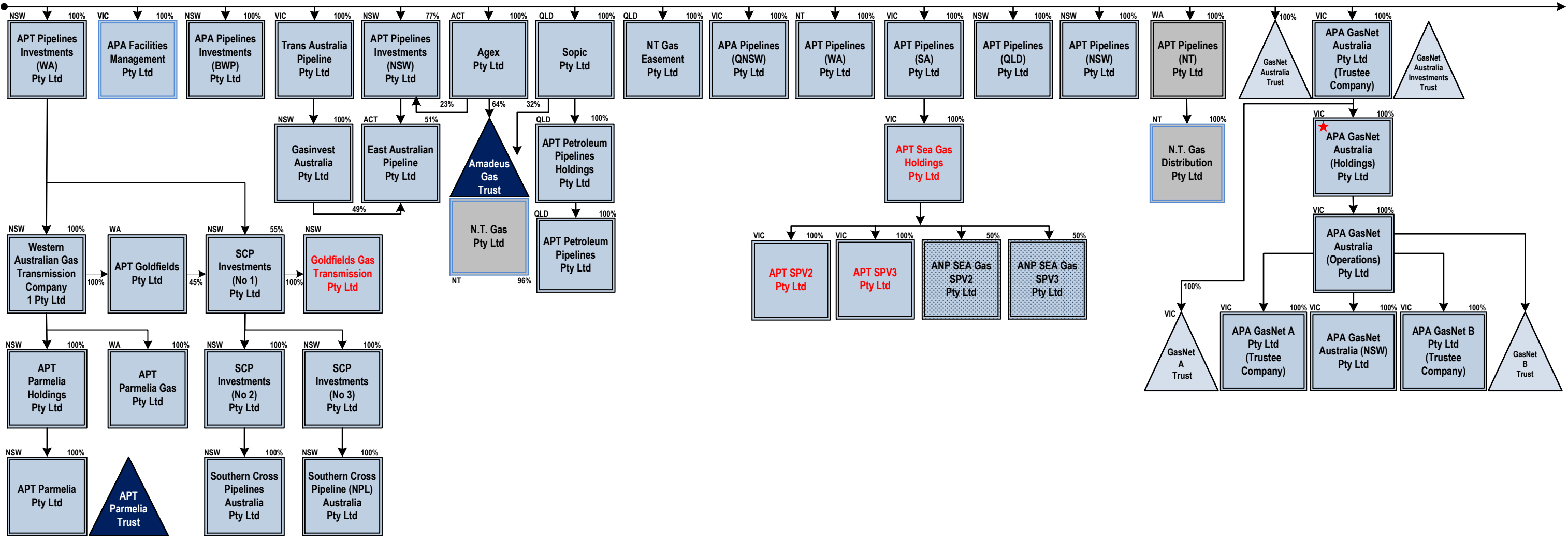
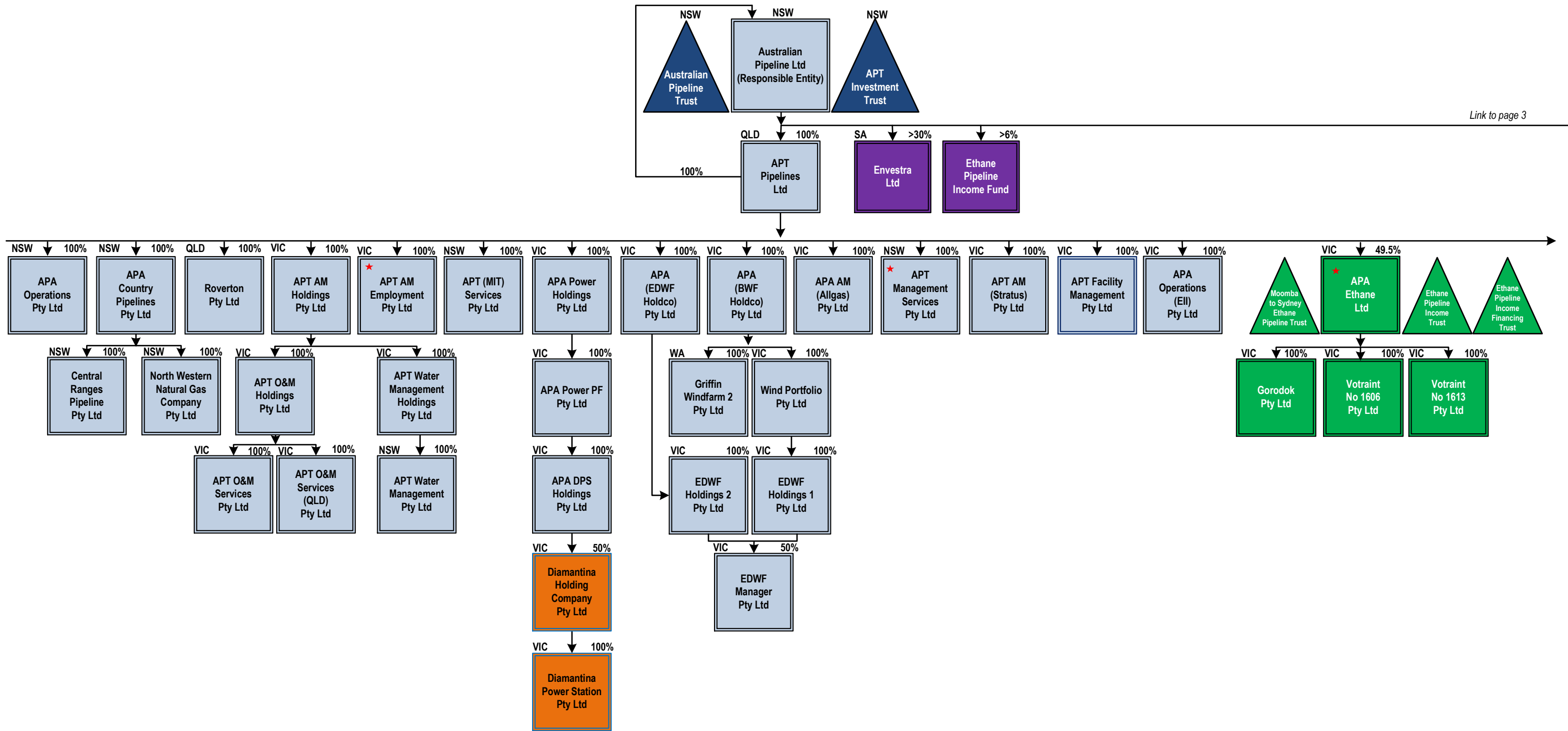


APA Group Organisational Chart

1 June 2013



- ★ Employing entities
 - Diamantina Power Station
 - Energy Infrastructure Investments Pty Ltd (EII)
 - GDI (EII) Investments
 - APA Group and subsidiaries
 - Ethane Pipeline Income Fund and subsidiaries
 - Energy Infrastructure Investments 2 (EII2)
 - Non standard APA subsidiary Directors
 - APA Investment
 - △ Trusts
 - Partial Ownership
 - Partnerships / JV
- Red text - Wholly owned entities which do not guarantee APA Group's finance facilities



Owned by Australian Pipeline Ltd
 Link to page 2

