

**LEGEND**

LPG	LPG Reticulation	Valve	Power Pole
TLP	TLP Medium Pressure	Syphon	Telephone Pit
TLPm	TLP Medium Pressure Insulated	Endcap	Manhole
TLP	TLP High Pressure	Regulator	Reducer
TLPm	TLP High Pressure Insulated	Pipe Connector	Plunge Point
DM	Dormant Main	Insulated Connection	Warning Sign (Rect)
PROPOSED	Proposed Main	Cathodic Test Pole	METER

www.dialbeforeyoudig.com.au  
**DIAL 1100 BEFORE YOU DIG**

**MAPPING DEPARTMENT**  
 Queries regarding this map should be directed to the MAPPING OFFICE on PH (07) 3267 9514 FAX (07) 3267 3470

Based on or contains data provided by the Department of Natural Resources and Mines, Queensland 2005 which gives no warranty in relation to the data (including accuracy, reliability, completeness or suitability) and accepts no liability (including without limitation, liability in negligence) for any loss, damage costs (including consequential damage) relating to any use of the data.

Street Numbers (Local Council) ©

smithda\_1:5000\_26-09-2007 10:32:16

SCALE 1:5000  
 METRES

**Title Roma Power Station Pipeline Sheet 1**

Job No: _____	Drawn: DS	Date: 26-09-2007
AA Ref: _____	Design: _____	Date: _____
	Checked: _____	Date: _____
	Approved: _____	Date: _____

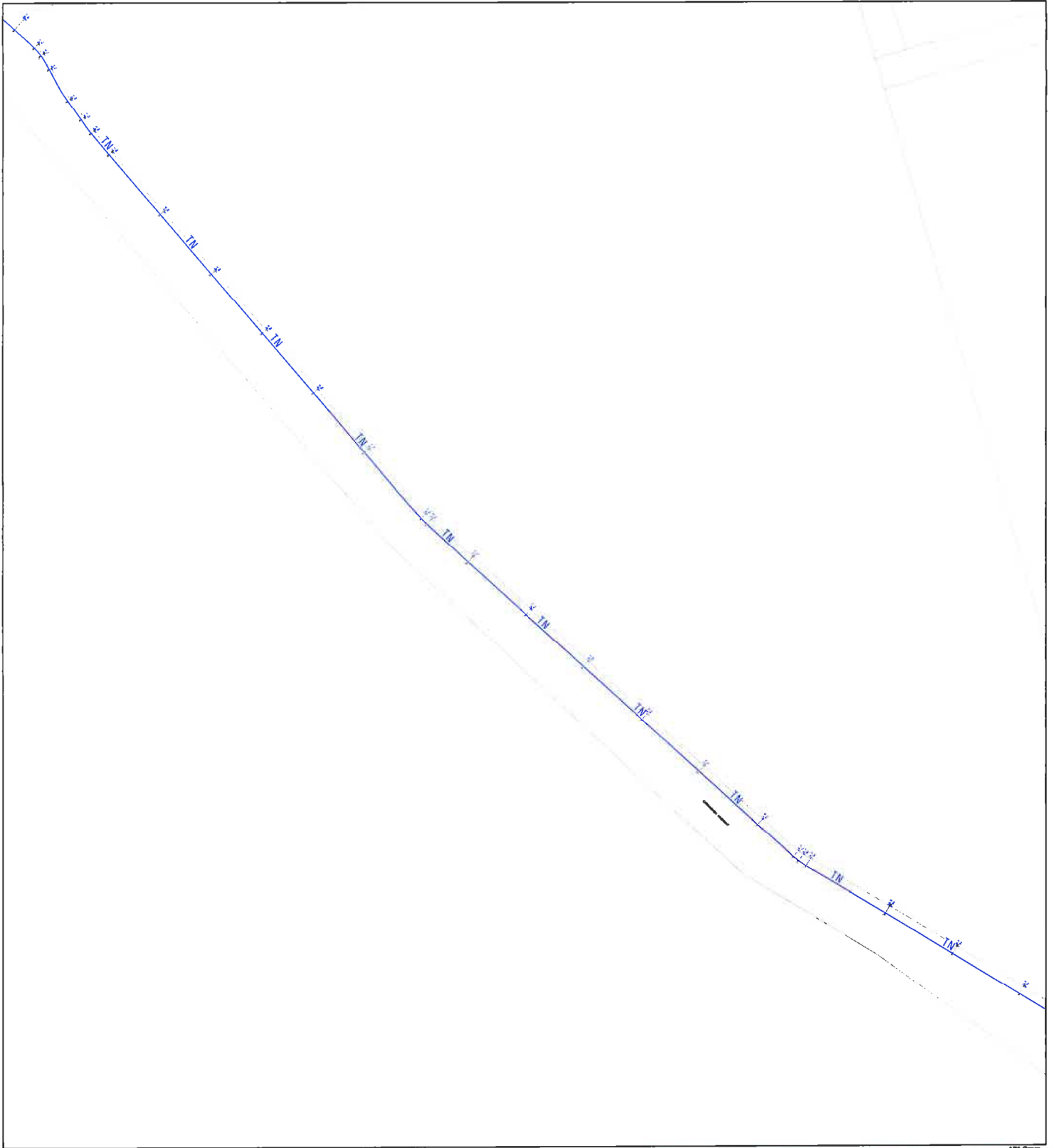
North Pointer

**MAPS CREATED AND MAINTAINED BY APA GROUP QUEENSLAND NETWORKS**  
 A.B.N. 13 112 358 595

**APA Group**

Plan Number  
**12187**

Rev: 0  
**A2**



LEGEND			
LPG	LPG Reticulation	⊕	Sewer Manhole
TLP	TLP Medium Pressure	⊗	Valve
TLP	TLP Medium Pressure Inverted	⊙	Syphon
TLP	TLP High Pressure	⊚	Endcap
TLP	TLP High Pressure Inverted	⊛	Regulator
DM	Dormant Main	⊔	Pipe Connector
PROPOSED	Proposed Main	⊕	Isolated Connection
		⊖	Cathodic Test Point
		⊞	METER
		⊟	Power Pole
		⊠	Telocum Pit
		⊡	Manhole
		⊢	Blanket
		⊣	Flange Point
		⊤	Working Sign (Marker)

www.dialbeforeyoudig.com.au  
**DIAL 1100 BEFORE YOU DIG**

**MAPPING DEPARTMENT**  
 Queries regarding this map should be directed to the MAPPING OFFICE on  
 PH (07) 3267 9514  
 FAX (07) 3267 3470

Based on or contains data provided by the Department of Natural Resources and Mines, Queensland 2005 which gives no warranty in relation to the data (including accuracy, reliability, completeness or suitability) and accepts no liability (including without limitation, liability in negligence) for any loss, damage costs (including consequential damage) relating to any use of the data.

Street Numbers (Local Council) ©

smithda\_1:5000\_26-09-2007 10:36:59

SCALE 1:5000

METRES

Title Roma Power Station Pipeline  
Sheet 2

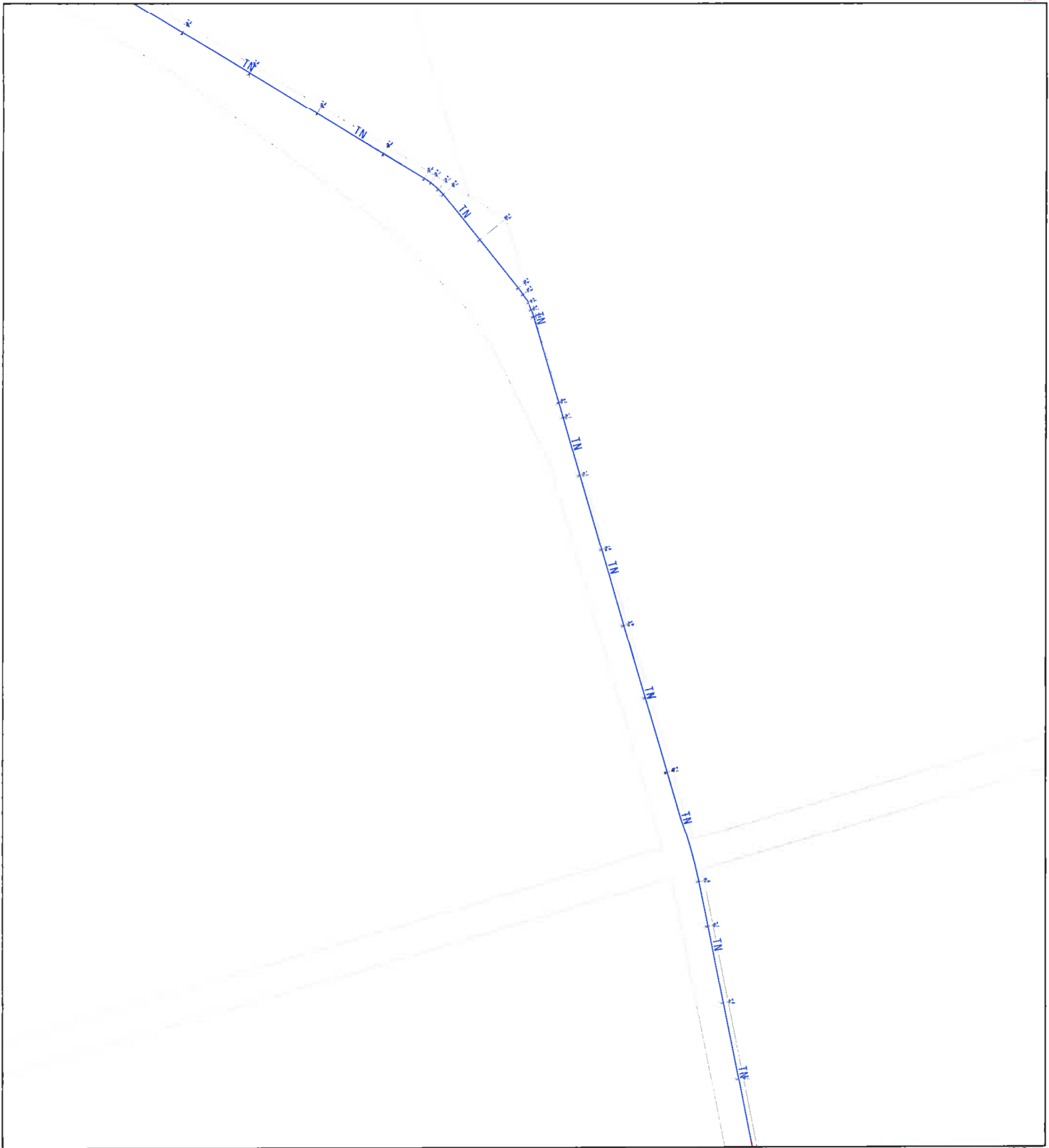
Job No: _____	Drawn: DS	Date: 26-09-2007
AA Ref: _____	Design: _____	Date: _____
	Checked: _____	Date: _____
	Approved: _____	Date: _____

North Pointer  
 W E  
 S

**MAPS CREATED AND MAINTAINED BY  
 APA GROUP QUEENSLAND NETWORKS**  
 A.B.N. 13 112 358 595

**APA Group**

Plan Number 12187	Rev: 0
	<b>A2</b>



LEGEND			
LPG	LPG Penetration	Stove	Sewer Manhole
TLP	TLP Medium Pressure	Valve	Power Pole
TLPm	TLP Medium Pressure Inserted	Syphon	Telecom Pit
TLP	TLP High Pressure	Endcap	Baghole
TLPm	TLP High Pressure Inserted	Regulator	Rainwater
DLC	Dormant Main	Pipe Connector	Purge Point
PROPOSED	Proposed Main	Insulator Connection	Working Lip (Marked)
		Cathodic Test Point	METER

www.dialbeforeyoudig.com.au

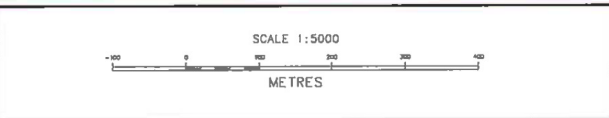
**DIAL 1100**  
BEFORE YOU DIG

**MAPPING DEPARTMENT**  
Queries regarding this map should be directed to the MAPPING OFFICE on PH (07) 3267 9514 FAX (07) 3267 3470

Based on or contains data provided by the Department of Natural Resources and Mines, Queensland 2005 which gives no warranty in relation to the data (including accuracy, reliability, completeness or suitability) and accepts no liability (including without limitation, liability in negligence) for any loss, damage costs (including consequential damage) relating to any use of the data.

Street Numbers (Local Council) ©

smithda\_1:5000\_26-09-2007 10:40:25



Title Roma Power Station Pipeline  
Sheet 3

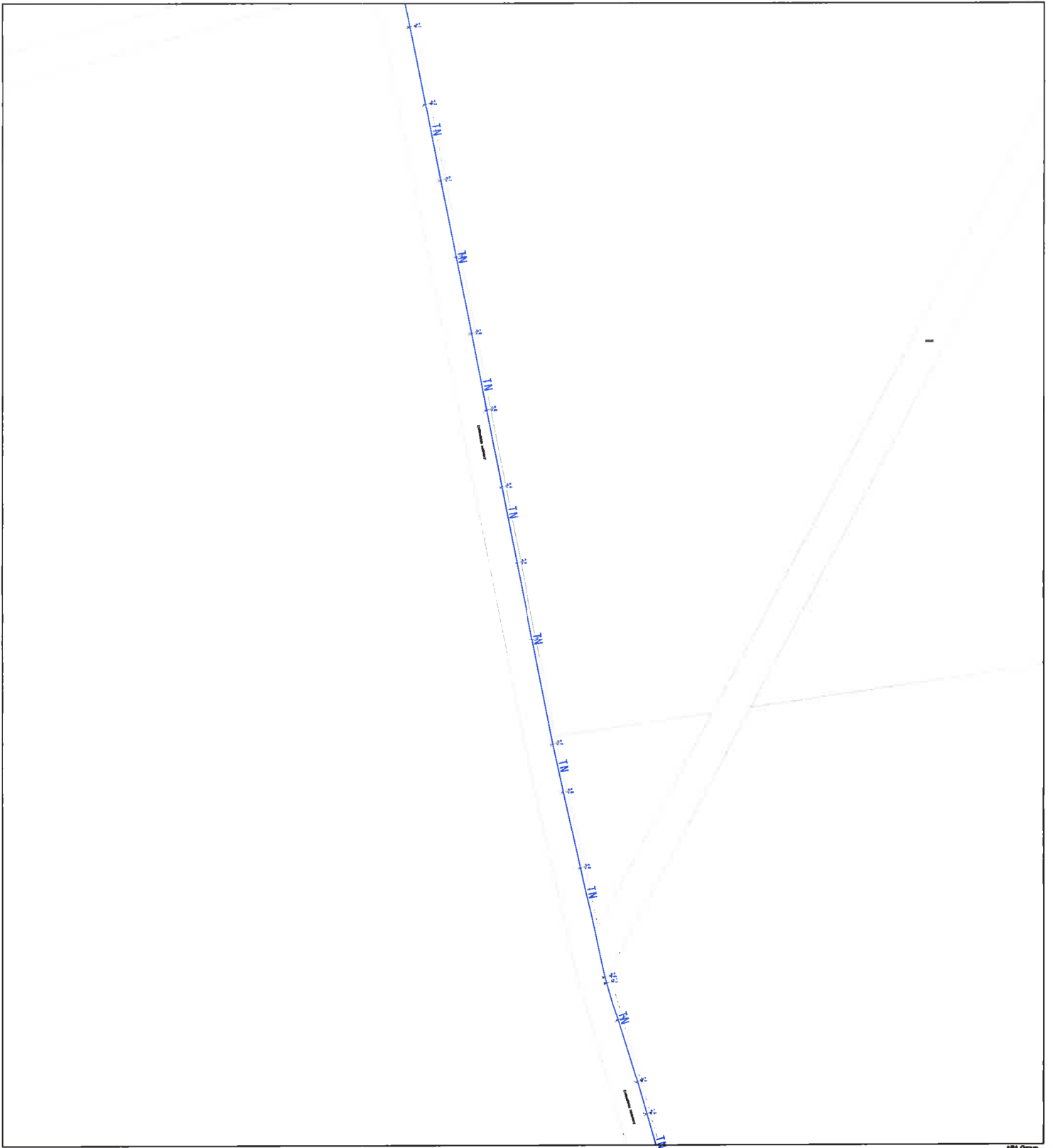
Job No: _____	Drawn: DS	Date: 26-09-2007
AA Ref: _____	Design: _____	Date: _____
	Checked: _____	Date: _____
	Approved: _____	Date: _____
<p>North Pointer</p> <p>W N E S</p>		
<p><b>MAPS CREATED AND MAINTAINED BY</b> <b>APA GROUP QUEENSLAND NETWORKS</b> A.B.N. 13 112 358 595</p>		



**APA Group**

Plan Number  
**12187**

Rev: 0  
**A2**



**LEGEND**

	LPG Articulation		Scurve		Sewer Manhole
	TLP Medium Pressure		Valve		Power Pole
	TLP Medium Pressure Inserted		Siphon		Telecom Pit
	TLP High Pressure		Endcap		Bighole
	TLP High Pressure Inserted		Regulator		Rushbar
	Dormant Main		Pipe Connector		Purge Point
	Proposed Main		Insulated Connection		Warning Sign (circle)
			Cathodic Test Pole		METER



**TitleRoma Power Station Pipeline  
Sheet 4**



**APA Group**



**MAPPING DEPARTMENT**  
 Queries regarding this map should be directed to the MAPPING OFFICE on  
 PH (07) 3267 9514  
 FAX (07) 3267 3470

Job No: _____	Drawn: DS	Date: 26-09-2007
AA Ref: _____	Design: _____	Date: _____
	Checked: _____	Date: _____
	Approved: _____	Date: _____

Based on or contains data provided by the Department of Natural Resources and Mines, Queensland 2005 which gives no warranty in relation to the data (including accuracy, reliability, completeness or suitability) and accepts no liability (including without limitation, liability in negligence) for any loss, damage or costs (including consequential damage) relating to any use of the data.

Street Numbers (Local Council) ©

smit hda\_1:5000\_26-09-2007 10:43:44

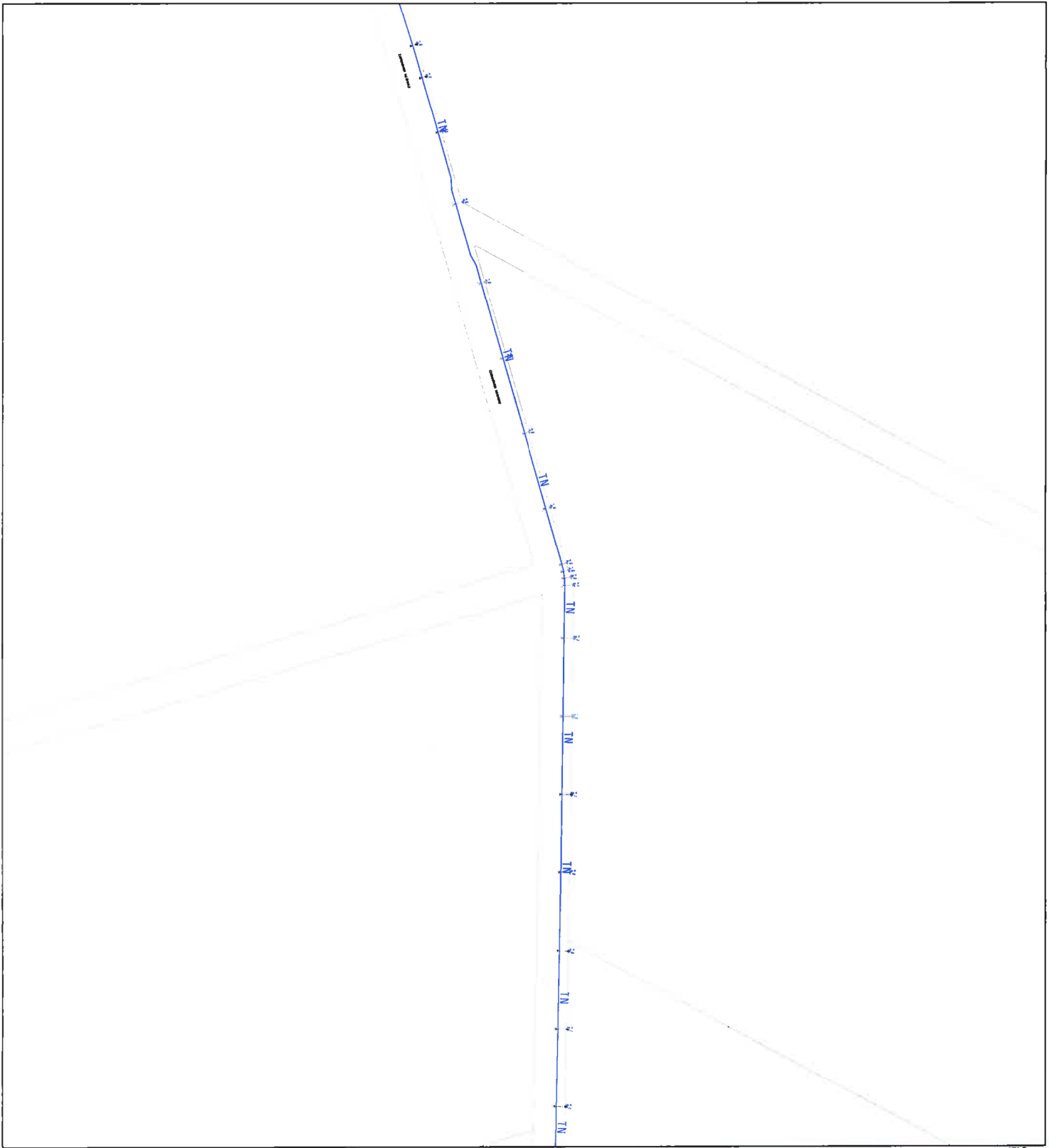


**MAPS CREATED AND MAINTAINED BY  
 APA GROUP QUEENSLAND NETWORKS**  
 A.B.N. 13 112 358 595

**Plan Number  
 12187**

Rev: 0

**A2**



**LEGEND**

LPG	LPG Reticulation	Scave	Sewer Manhole
TLP	TLP Medium Pressure	Valve	Power Pole
TLPins	TLP Medium Pressure Inserted	Syphon	Telecom Pit
TLP	TLP High Pressure	Endcap	Singlehole
TLPins	TLP High Pressure Inserted	Regulator	Rehacer
DM	Dormant Main	Pipe Connector	Purge Point
PROPOSED	Proposed Main	Insulated Connection	Warning Sign (Marker)
		Cathodic Test Pole	METER



**TitleRoma Power Station Pipeline Sheet 5**



**APA Group**



**MAPPING DEPARTMENT**  
 Queries regarding this map should be directed to the MAPPING OFFICE on  
 PH (07) 3267 9514  
 FAX (07) 3267 3470

Job No: _____	Drawn: DS	Date: 26-09-2007
AA Ref: _____	Design: _____	Date: _____
	Checked: _____	Date: _____
	Approved: _____	Date: _____

Based on or contains data provided by the Department of Natural Resources and Mines, Queensland 2005 which gives no warranty in relation to the data (including accuracy, reliability, completeness or suitability) and accepts no liability (including without limitation, liability in negligence) for any loss, damage costs (including consequential damage) relating to any use of the data.

Street Numbers (Local Council) ©

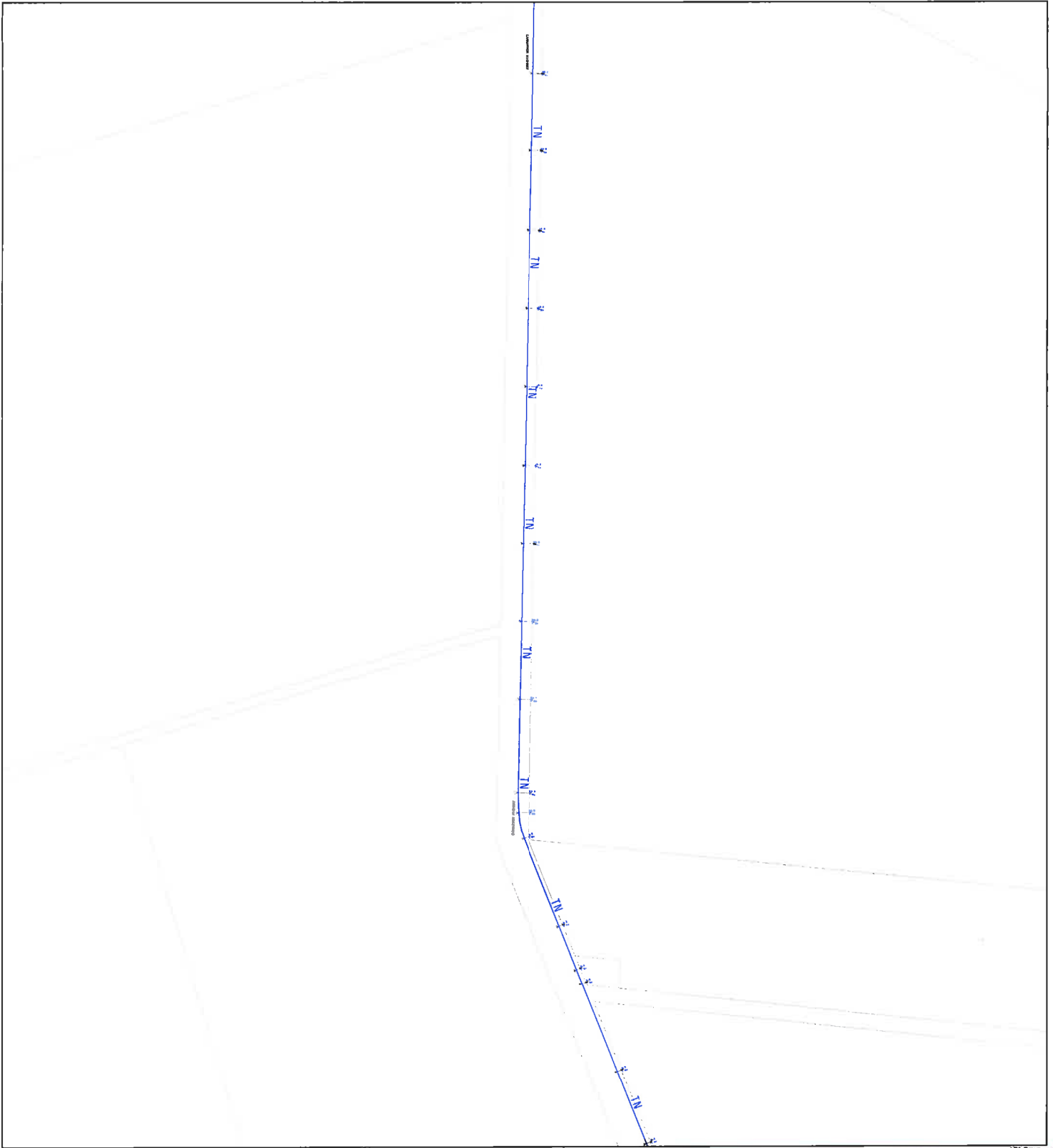
smitdca\_1:5000\_26-09-2007 10:47:00



**MAPS CREATED AND MAINTAINED BY  
 APA GROUP QUEENSLAND NETWORKS**  
 A.B.N. 13 112 358 595

**Plan Number  
 12187**

Rev: 0  
**A2**



**LEGEND**

LPG	LPG Reticulation	Scave	Power Pole
TLP	TLP Medium Pressure	Valve	Telecom Pt
TLPm	TLP Medium Pressure Insertion	By-pass	Regulator
TLP	TLP High Pressure	Endcap	Busbar
TLPm	TLP High Pressure Insertion	Regulator	Busbar
DSC	Dormant Main	Pipe Connector	Charge Point
PROPOSED	Proposed Main	Insulated Connection	Working Spa (Water)
		Cathodic Test Poles	METER



**TitleRoma Power Station Pipeline Sheet 6**



**APA Group**



**MAPPING DEPARTMENT**  
 Queries regarding this map should be directed to the MAPPING OFFICE on  
 PH (07) 3267 9514  
 FAX (07) 3267 3470

Job No: _____	Drawn: DS	Date: 26-09-2007
AA Ref: _____	Design: _____	Date: _____
	Checked: _____	Date: _____
	Approved: _____	Date: _____

Based on or contains data provided by the Department of Natural Resources and Mines, Queensland 2005 which gives no warranty in relation to the data (including accuracy, reliability, completeness or suitability) and accepts no liability (including without limitation, liability in negligence) for any loss, damage costs (including consequential damage) relating to any use of the data.

Street Numbers (Local Council) ©

smithda\_1:5000\_26-09-2007 10:49:57

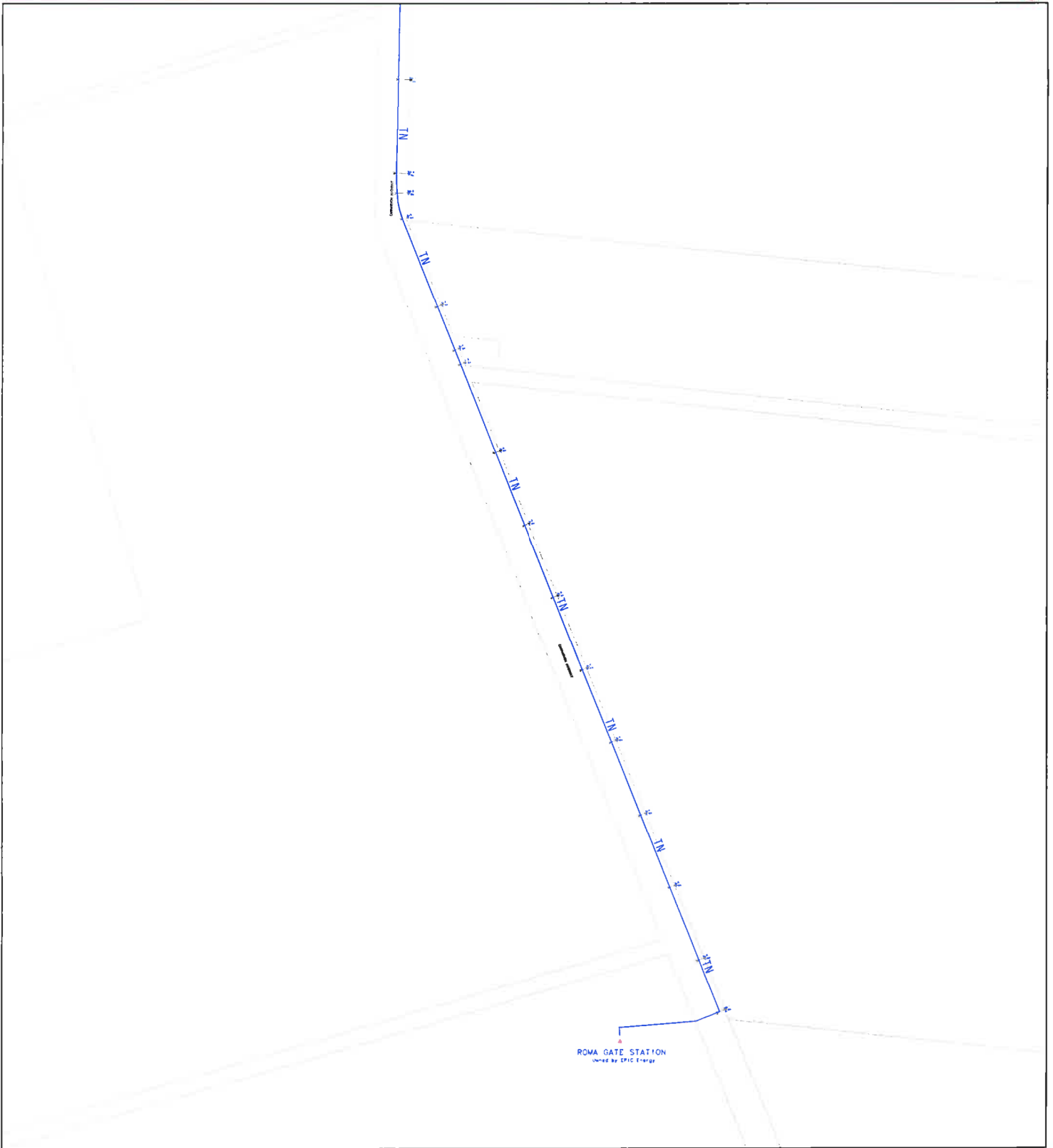


**MAPS CREATED AND MAINTAINED BY  
 APA GROUP QUEENSLAND NETWORKS**  
 A.B.N. 13 112 358 595

**Plan Number**  
 12187

Rev: 0

**A2**



**LEGEND**

LPG	LPG Retardation	Sleeve	Sewer Manhole
TLP	TLP Medium Pressure	Valve	Power Pole
TLP <sub>ins</sub>	TLP Medium Pressure Insulated	Valve	Telecom Pit
TLP	TLP High Pressure	Endcap	Raghole
TLP <sub>ins</sub>	TLP High Pressure Insulated	Regulator	Reducer
D.M.	Dormant Main	Pipe Connector	Purge Point
PROPOSED	Proposed Main	Isolated Connection	Working Sp (Star)
		Cathodic Test Point	METER



**Title Roma Power Station Pipeline Sheet 7**



**APA Group**



**MAPPING DEPARTMENT**  
 Queries regarding this map should be directed to the MAPPING OFFICE on PH (07) 3267 9514 FAX (07) 3267 3470

Job No: ---	Drawn: DS	Date: 26-09-2007
AA Ref: ---	Design: ---	Date: ---
	Checked: ---	Date: ---
	Approved: ---	Date: ---

Based on or contains data provided by the Department of Natural Resources and Mines, Queensland 2005 which gives no warranty in relation to the data (including accuracy, reliability, completeness or suitability) and accepts no liability (including without limitation, liability in negligence) for any loss, damage costs (including consequential damage) relating to any use of the data.

Street Numbers (Local Council) ©

smithda\_1:5000\_26-09-2007 11:02:20



**MAPS CREATED AND MAINTAINED BY  
 APA GROUP QUEENSLAND NETWORKS**  
 A.B.N. 13 112 358 595

**Plan Number  
 12187**

Rev: 0

**A2**