



SA Power Networks Legacy Meter Replacement Plan

June 2025
Version 1.0



Empowering South Australia

Contents

Acknowledgement of Country	2
Glossary.....	3
1. Executive Summary	4
2. About SA Power Networks	5
3. Our approach to developing the LMRP	6
Stage 1 - Development	6
Stage 2 - Confirmation.....	7
Stage 3 - Approval.....	8
Stage 4 - Implementation	8
4. Engagement summary	9
5. Key Development Framework	11
Yearly Rollout Profile	12
Geographical Spread	13
Meter Allocation.....	15
Other Considerations	17
6. LMRP Schedule	18
7. Direction Paper Consultation	22
8. Implementation of the LMRP	25
Appendix 1: Additional supporting documentation	29
Appendix 2: AER List of considerations for reviewing LMRPs	31

Acknowledgement of Country

SA Power Networks Acknowledges the multiple Traditional Owners of the lands that host the South Australian electricity network and their connections to land, sea, and community.

We would also like to pay our respects to all First Nations' Peoples past and present and acknowledge these living cultures.



Presten Warren (b. 2000), *Empowering South Australia*, 2023, Acrylic on Canvas, 170cm x 90 cm

Commissioned by SA Power Networks for our 2023 Reconciliation Action Plan.

Glossary

Acronym / term	Definition
AEMC	Australian Energy Market Commission
AEMO	Australian Energy Market Operator
AER	Australian Energy Regulator
B2B	Business to Business
B2BWG	Business to Business Working Group
CAF	Community Advisory Forum
CAG	Connections Advisory Group
DEM	Department of Energy and Mining
DNSP	Distribution network service provider
ESCoSA	Essential Services Commission of South Australia
EWOSA	Electricity and Water Ombudsman of South Australia
LMRP	Legacy Meter Retirement Plan
MC	Metering Coordinator
Metro	Metropolitan
MFN	Meter Fault Notification
MP	Metering Provider
MSATS	Market Settlement and Transfer Solutions
NEM	National Electricity Market
NER	National Electricity Rules
NMI	National Metering Identifier
ROCL	Retailer Operational Contact List
SA	South Australia
Smart Meter	An electricity meter that records interval data and is remotely read
TAG	Tariff Advisory Group
VCAG	Vulnerable Customer Advisory Group

1. Executive Summary

Metering assets are used to measure electrical energy flows at a connection point on our network for a particular customer's premises and record electricity consumption (and export) by customers for billing purposes.

Since December 2017 retailers have been responsible for installing new and replacement meters for customers. These meters must be remotely read interval meters, often referred to as 'smart' meters. In South Australia, SA Power Networks retains responsibility for providing legacy metering services, including manual reading, testing and maintenance of legacy meters until they are replaced with a smart meter.

The number of legacy meters on our network has been reducing gradually. However, the rollout of smart meters has been slower than anticipated, delaying realisation of benefits to individual customers and the wider power system.

In response, the Australian Energy Market Commission (AEMC) in August 2023 recommended a faster rollout, aiming for complete coverage by 2030. They recommended that distribution network service providers (DNSPs) develop a 'legacy metering replacement plan' (LMRP), with retailers installing smart meters at legacy sites from 2025 to 2030.

Following a rule change request by Intellihub, SA Power Networks, and Alinta Energy, the AEMC initiated the formal rule change process on 4 April 2024. The final rules, published on 28 November 2024, mandated an accelerated smart meter rollout commencing on 1 December 2025 and required DNSPs to submit an LMRP to the Australian Energy Regulatory (AER) for approval by 30 June 2025.

This document sets out SA Power Networks' LMRP to enable efficient replacement of all legacy meters in South Australia between 1 December 2025 and 30 November 2030. This LMRP has been developed in accordance with the AEMC's LMRP objectives, principles and extensive stakeholder feedback.

SA Power Networks commenced its stakeholder engagement process in March 2024 and undertook a series of collaborative and constructive sessions with key stakeholders during 2024. This extensive engagement helped to determine the direction for our LMRP.

This proposed direction was provided to stakeholders for review via our 'Direction Paper' on 24 March 2025 and has received very strong positive support from stakeholders, including retailers representing over 99% of legacy meters due for replacement. SA Power Networks has thoroughly analysed all feedback received during each stage of engagement and incorporated it into our LMRP where possible. Given the strong support from stakeholders during the 'Direction Paper' confirmation stage, we have concluded that no changes to the LMRP direction are needed. Therefore, we have maintained consistency with the 'Direction Paper' for this LMRP.

We are confident that we have provided all stakeholders the opportunity to engage, and this LMRP achieves a balanced outcome that aligns with the AEMC Objective and Principles.

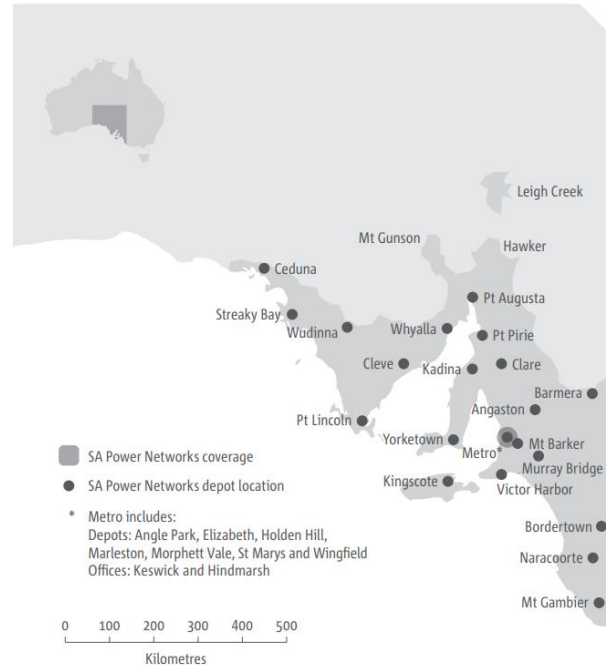
2. About SA Power Networks

SA Power Networks is the primary electricity distribution network service provider for South Australia.

- Supply South Australia's 1.7 million population
- Supplying over 934,000 homes and businesses
- 1,800 employees in more than 30 sites across the State

For information about SA Power Networks visit sapowernetworks.com.au

Network Service Area



Our meter population

(Approx. Metering/National Metering Identifier (NMI) Numbers - June 2025)



Basic Meters

Meters – 516.7K (49%)

NMI's – 439.0K (46.3%)



Smart Meters

Meters – 538.8K (51%)

NMI's – 508.3K (53.7%)

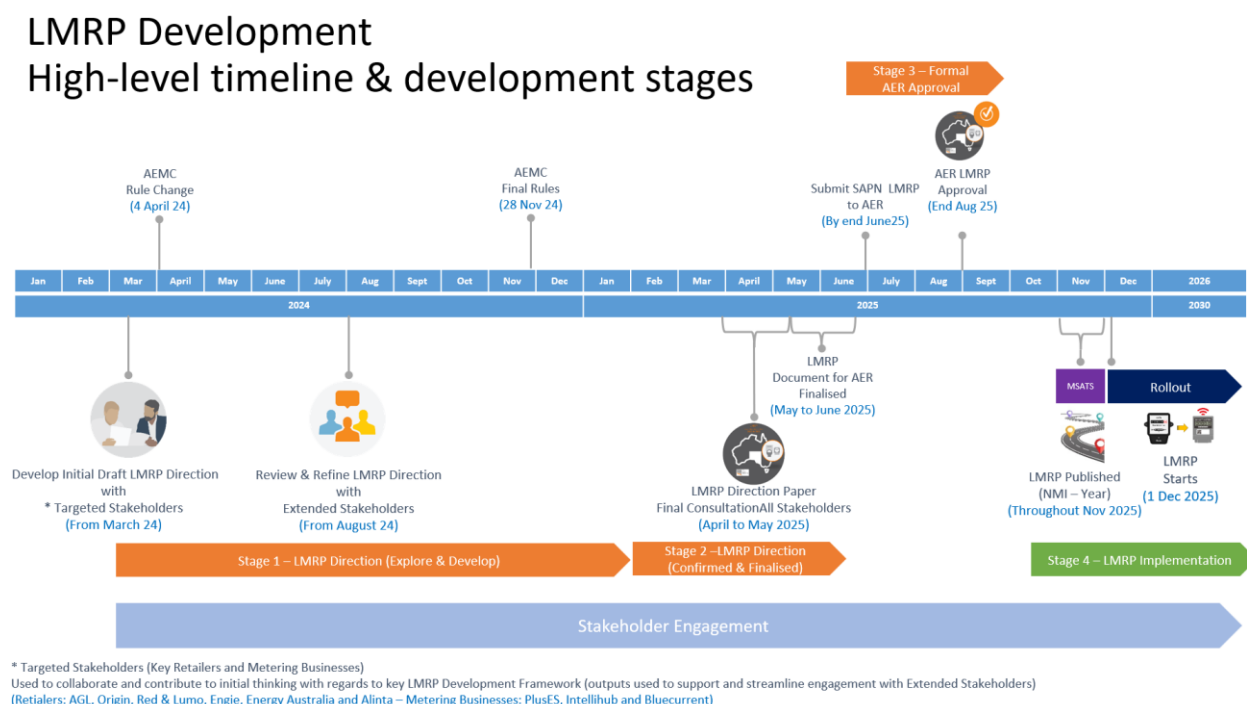
3. Our approach to developing the LMRP

Our approach has been shaped by engagement with key stakeholders and providing them with the opportunity to actively collaborate in the development of our LMRP.

Refer to Figure 1 for a visual representation of our approach and timeline for development of our LMRP.

There are four distinct stages, including development (stage 1), confirmation (stage 2), approval (stage 3) and implementation (stage 4) of the LMRP. These are discussed in more detail below.

Figure 1 - LMRP development timeline and development stages




Stage 1 - Development

Commencing in March 2024, we worked directly with a targeted group of Retailers (including AGL, Origin, Engie, Lumo & Red Energy, Energy Australia and Alinta Energy) and Metering Coordinators (including PlusES, Intellihub and Bluecurrent) to explore and develop the draft LMRP direction. These retailers were targeted as they represent approximately 94% of legacy meters that would need to be included in our LMRP. These retailers also advised the Metering Coordinators (MCs) they expect to engage as the key service providers in South Australia which informed our selection of targeted MCs.

We held individual meetings with these targeted stakeholders, to explore and develop a Key Development Framework which would form the basis for the development of our LMRP Schedule. This framework (refer to Figure 2) has formed the basis of our consultation with all stakeholders, considering rollout profiles, metropolitan and regional segmentation, and any tactical requirements. This is discussed in detail in section 5 in this document.

Figure 2 - Key development framework for LMRP (used with stakeholders during engagement process)

LMRP – Key Development Framework



Step	What	Why	Link to AEMC Rules	Current Direction
1	What rollout profile (Even, Middle peak or Back-end peak) should be used over the 5-year period (required to be between 15% and 25%) ?	This will determine the high-level yearly volume targets within the LMRP.	LMRP Principle 1	Y1 – 15% Y2 & Y3 – 25% Y4 – 20% Y5 – 15%
2.1	What % split between Metro and Regional areas should be applied to each yearly LMRP volume?	This will determine the target breakdown of Metro Vs Regional areas within the yearly LMRP volume.	LMRP Principle 2, 3 & 4	70% in Metro areas 30% in Regional areas
2.2	What segmentation of Metro areas should be considered (Adelaide North, South, West, Central & Hills)?	This will determine the target breakdown of Metro suburbs within the yearly LMRP volume.	LMRP Principle 2, 3 & 4	Even split across Metro area
2.3	What segmentation of Regional areas should be considered and how should Regional work be approached – balance target yearly volumes to ensure work in each Regional area most years of the LMRP?	This will determine the target breakdown of Regional suburbs within the yearly LMRP volume.	LMRP Principle 2, 3 & 4	Work balance and allocated across all Regional areas
3	Identify any tactical meter exchanges within the early (Year 1 & 2) deployment?	May provide for early benefits (these will need to be prioritised and justified - shouldn't be included if they comprise overall efficiency).	LMRP Principle 2	No tactical items currently identified
4	Target complete Metering Reading routes within the agreed Metro/Regional breakdowns to identify and allocate at the NMI level?	This will promote an efficient meter rollout and aim to reduce inefficient manual meter reading processes.	LMRP Principle 2, 3 & 4	Meter Reading routes used
Application of Key Development Framework <ul style="list-style-type: none"> • Should be viewed from an overall state perspective and the best approach to develop an efficient LMRP • The criteria will be used to guide the development of the LMRP Schedule (some variation may occur to balance volumes and factor in actual basic metering fleet location) • Retailer variation expected to ensure overall meter change efficiency for Metering Businesses (individual Retailer LMRP Schedule not expected to fully line up to percentages listed – variations driven by customer base location) 				

In August 2024, we initiated engagement with a broader stakeholder group, including all retailers with customers who continue to have legacy meters. All retailers were offered options in how they would like to engage and receive information (via email or to engage in a direct discussion with SA Power Networks). A further five retailers (additional to the targeted retailer group) requested involvement, and dedicated meetings were held with these retailers during September and November 2024.

Concurrently, we began sharing information with key South Australian regulatory bodies and our Customer Advisory Groups who represent end use customers. Our aim during this period was to create awareness of the LMRP development and provide all key stakeholders with the opportunity to contribute.

During this stage, the provision of the draft LMRP Schedule (a full list of retailers NMI's with the allocated LMRP year assigned) was provided to the retailers that elected to engage in the process. Metering businesses were also provided with a high-level view of the draft LMRP Schedule (Post Code, Suburb and Meter Volumes). This detailed level of information was provided to these stakeholders to allow for full assessment of the draft LMRP direction. Further information about the LMRP Schedule is discussed in detail in section 6.

Stage 2 - Confirmation

This stage included the development and distribution of an LMRP 'Direction Paper'. The LMRP 'Direction Paper' was issued on 24 March 2025 to all Retailers with customers who continue to have legacy meters, four key Metering Businesses operating in South Australia, regulatory bodies in South Australia, our Customer Advisory Forum and our Connection Advisory Group, with feedback requested by 11 April 2025.

This document did not introduce any fresh content or alter the agreed LMRP direction established during stage 1. It provided stakeholders with a final opportunity to contribute to the development of our LMRP and requested they provide formal feedback on their level of support for our proposed direction.

Refer to section 7 for a summary of the feedback received.

Stage 3 - Approval

As required by the rules (National Energy Rules (NER) - 11.177.4), no later than 30 June 2025, SA Power Networks must provide its LMRP to the AER for approval. The AER will approve the LMRP by the end of August 2025 or return it to the DNSP for resubmission where amendments are required. Once approved the AER will publish a copy of the LMRP on its website within 10 business days. SA Power Networks will also publish a copy of the approved LMRP on our website and ensure retailers are provided with a list of NMI's with their LMRP year allocation to support their rollout preparations.

Stage 4 - Implementation

As we move from the planning and approval process into the implementation stage, SA Power Networks will work with Australian Energy Market Operator (AEMO) and Industry to populate MSATS (the market systems) with the LMRP year for each applicable NMI (in line with the agreed industry procedure). This work will occur during November 2025 ahead of the Smart Meter Rollout start on 1 December 2025. SA Power Networks will continue to work with stakeholders to resolve issues if they arise and allow for a smooth transition – refer to section 8 for information on key topics.

4. Engagement summary

SA Power Networks has proactively engaged with stakeholders, deriving significant benefits from the process. This engagement has informed our understanding and assisted in shaping our direction. We deeply value the substantial input provided and extend our sincere thanks to those that participated for their time and insights.

Insights into our engagement:



Table 1 presents a comprehensive catalogue of the key engagement activities executed throughout the development of our LMRP. The results of these engagements are detailed in the subsequent sections. Specific meeting materials were developed and disseminated among stakeholders, with feedback actively sought both during and after these meetings (a list of these items can be found within the appendix).

In addition to these activities, we have actively engaged with our stakeholders, supplying them with information as needed to support their understanding of the LMRP. We welcomed their insights, encouraging them to voice their perspectives and concerns to ensure that our final direction was well-informed and thoroughly considered.

Table 1 – Key Engagement Activities

Engagement Activity	Number of Meetings	Who was involved	When
Development of the draft Key Development Framework	9	6 Retailers (representing 94% of legacy meters to be replaced) 3 Metering Coordinators (as nominated by retailers)	March & April 2024
Key Development Framework direction and LMRP Schedule Version 1	9	6 Retailers (representing 94% of legacy meters to be replaced) 3 Metering Coordinators (as nominated by retailers)	June 2024
Request for Retailer involvement in SA Power Networks' LMRP Development	-	Email request sent to all retailers with customers who continue to have legacy meters inviting them to participate in the	August 2024

Engagement Activity	Number of Meetings	Who was involved	When
		LMRP development process or receive information.	
Key Development Framework direction and LMRP Schedule Version 1	5	An additional 5 Retailers responded to this request	September to November 2024
Sharing of Key LMRP Information and request for input to Regulatory Bodies	3	<ul style="list-style-type: none"> SA Department for Energy and Mining Electricity & Water Ombudsman of SA (EWOSA) Essential Services Commission of SA (ESCOSA) 	October to November 2024
Sharing of Key LMRP Information and request for input to SAPN Customer Advisory Groups representing end use customers	5	<ul style="list-style-type: none"> SAPN Community Advisory Forum (CAF) SAPN Connection Advisory Group (CAG) SAPN Vulnerable Customer Advisory Group (VCAG) SAPN Tariff Advisory Group (TAG) 	August to November 2024
SAPN LMRP Direction Paper	-	The LMRP Direction Paper was issued to all Retailers with customers who continue to have legacy meters, four key Metering Businesses operating in SA, Regulatory bodies in SA, our CAF and our CAG	March 2025

5. Key Development Framework

To develop our LMRP, SA Power Networks has applied a Key Development Framework that aligns with the AEMC's rules.

This framework facilitated the exploration of key aspects with stakeholders, enabling the collection of their views and preferences. Decisions were then made to ensure alignment with the objectives and principles outlined within the rules.

The Key Development Framework comprises three key considerations:

1. What should be the annual rollout profile?
2. Which geographical locations should be prioritised for each year's meter replacement targets?
3. Within each selected geographical location, what criteria should be used to determine which meters are targeted for replacement?

The proposed direction following significant consultation is detailed in the subsequent pages.

Key obligations to be considered to ensure alignment with the rules (Extracts from NER Clause - 11.177):

LMRP Objective means the replacement of all Legacy Meters with type 4 *metering installations* in a timely, cost effective, fair and safe way during the LMRP Period.

LMRP Period means 1 December 2025 to 30 November 2030.

Interim Period means each 12-month period commencing on 1 December within the LMRP Period, with the first period commencing on 1 December 2025.

Interim Target means the target for replacement of Legacy Meters in each Interim Period made available to an Affected Retailer in accordance with clause 11.177.6.

LMRP Principles

In developing the *LMRP*, a *Local Network Service Provider* must have regard to the LMRP Principles, which are that:

(1) the number of Legacy Meters planned for replacement in each Interim Period should be between approximately 15–25 per cent of the total number of Legacy Meters required to be replaced under the *LMRP*;

(2) the overall efficiency of the *LMRP*, including costs and potential cost savings for affected *Market Participants*;

For example, Legacy Meters may be most efficiently retired in geographic groupings, such as by postcode, zone substation or meter reading route.

(3) the impact of the *LMRP* on affected Retailers and other affected stakeholders; and

(4) appropriate and efficient workforce planning, including in regional areas.

Yearly Rollout Profile

What is the purpose of this consideration

The Yearly Rollout Profile has been consulted on to determine the high-level volume of meters to be allocated to each LMRP year (Interim Period).

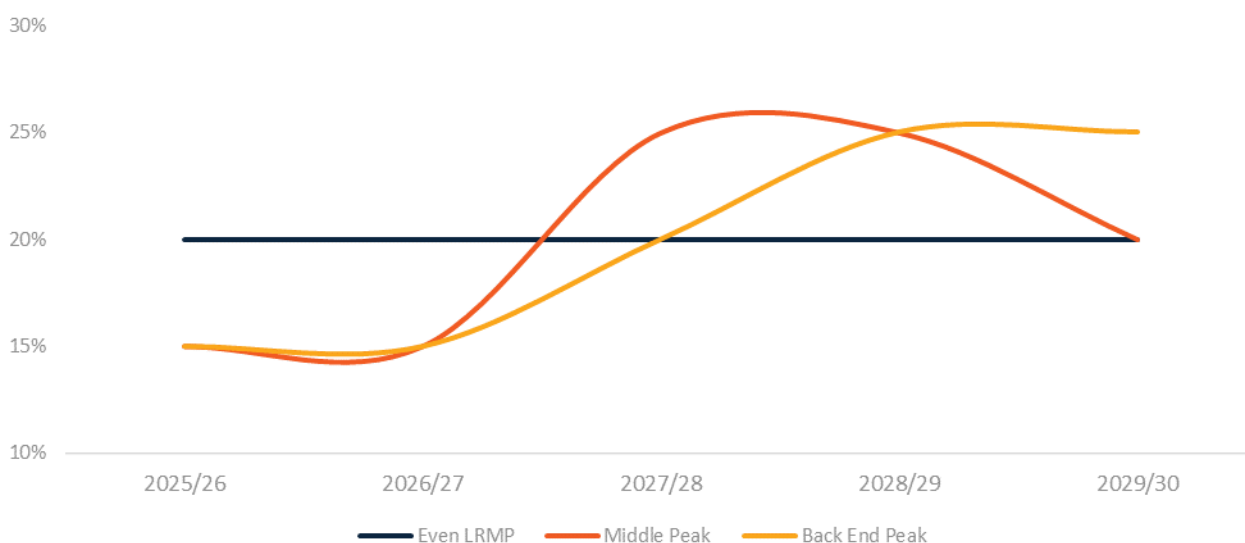
Options considered

We presented three different meter rollout profiles for consultation:

1. Even meter churn – where the legacy meters are scheduled to be replaced evenly over the accelerated rollout period;
2. Middle Peak churn – where the retailers will ramp up replacement volumes, with maximum volumes replaced in the middle of the rollout period. Under this scenario we would expect lower volumes to be replaced at the end of the replacement period; and
3. Back-end Peak churn – where retailers will progressively ramp up replacement volumes, with maximum replacement volumes completed at the end of the rollout period.

This is also depicted in Figure 3 below.

Figure 3 - Meter rollout profile options



What we heard

We engaged in discussions and explored variations to the annual meter exchange percentages with the targeted retailer and metering coordinators. While retailers and MCs were supportive of the middle peak, they proposed to alter the peak to be a year-2 / year-3 peak, with lower volumes planned in the last two years of the rollout.

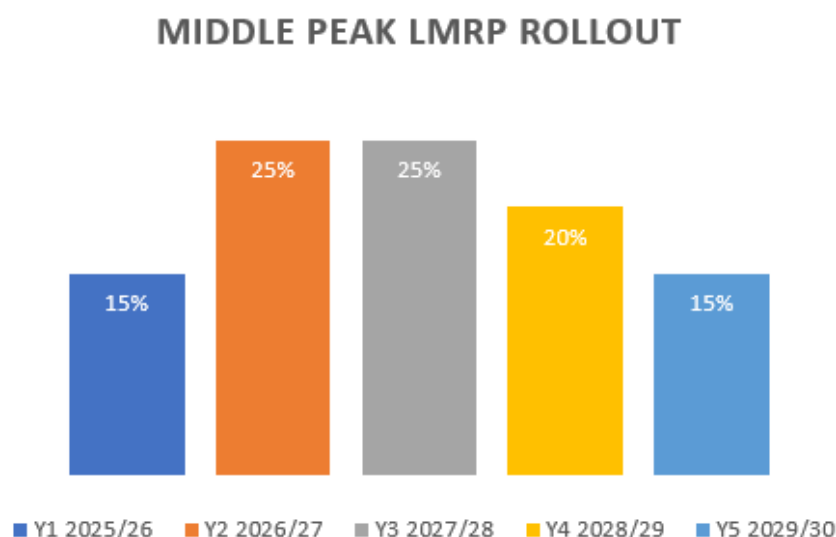
Most stakeholders expressed a preference for the Middle Peak LMRP Rollout with the lowest percentages being allocated at the start and end of the rollout. The rationale for this approach was to provide room at the beginning of the rollout to ensure that all necessary processes and systems are in place. Additionally, it allows space towards the end of the rollout to address and resolve any remaining issues.

We further tested the Middle Peak LMRP Rollout Profile with an annual profile distribution of 15%, 25%, 25%, 20%, and 15% with the broader stakeholder group and received no opposition from any stakeholders.

Proposed direction

Our proposed direction is to proceed with this Middle Peak LMRP Rollout Profile (refer to Figure 4) with an annual profile distribution of 15%, 25%, 25%, 20%, and 15%.

Figure 4 - Middle Peak LMRP profile



How does this align with the rules

LMRP Principle 1 - the number of Legacy Meters planned for replacement in each Interim Period should be between approximately 15–25 per cent of the total number of Legacy Meters required to be replaced under the *LMRP*.

The proposed middle peak profile is consistent with the AEMC’s LMRP principles, with between 15 and 25 per cent of meters scheduled to be replaced each year.

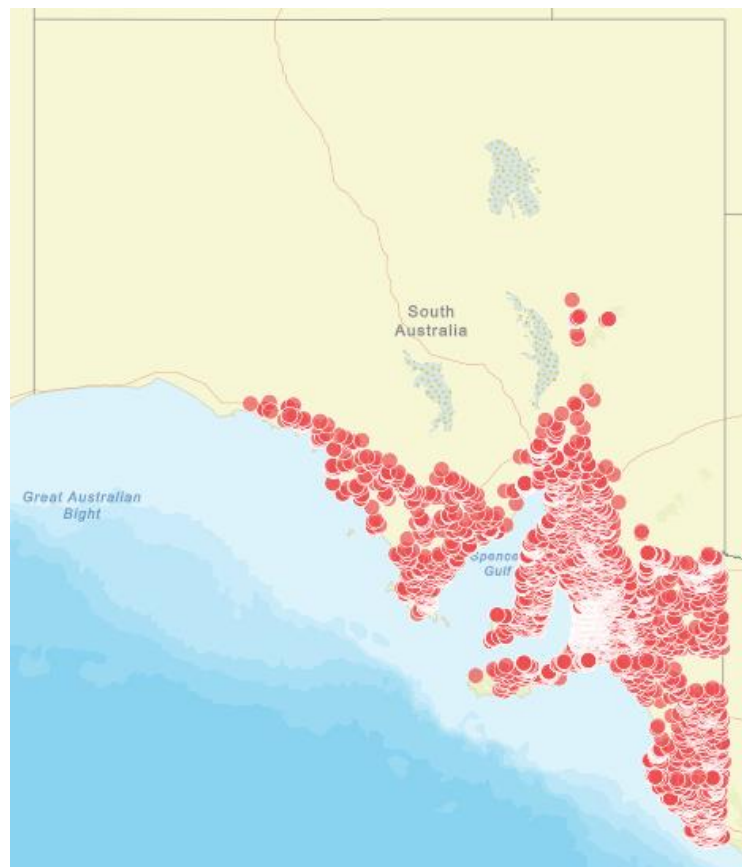
Geographical Spread

What is the purpose of this consideration

Given that the remaining legacy meters are spread across the entire SA Power Networks’ service area, determining which locations to allocate each year is a crucial factor in guaranteeing a streamlined and efficient implementation.

We consulted on the preferred metropolitan (metro) and regional allocations as well as how work is allocated within these areas. Approximately 70% of the legacy meters to be replaced are within the metro area.

Figure 5 provides a visual representation of the geographical spread of legacy meters that were in service as at 1 June 2025.

Figure 5 - Geographic spread of legacy meters in South Australia

Options considered

With approximately 70% of the remaining legacy metering located in metropolitan areas and 30% in regional locations, we explored the optimal allocation of the Yearly Rollout Profile annual target. This involved considering whether efforts should be concentrated solely in metropolitan areas in any given year. Additionally, when deciding on regional allocations, we evaluated whether these should be evenly distributed or intensely focused on one specific regional location each year.

What we heard

In response to the meter allocation considerations, all stakeholders expressed a preference for a more balanced approach. Rather than concentrating efforts in a single location, they favoured an even distribution of work across the state. This approach allows for optimal resource allocation and effective management over the entire rollout period, ensuring that no area is disproportionately affected or overlooked.

Multiple stakeholders expressed concerns about the scheduling of work on Kangaroo Island, suggesting that it should not be planned for the early years of the rollout. They raised additional logistical challenges, such as securing resources, arranging suitable accommodation, and organising transportation to and from the island via ferry, as reasons for this request.

Proposed direction

In response to stakeholder feedback, our framework is designed to ensure a balanced distribution of metering work across both metropolitan and regional areas. Furthermore, to accommodate the specific

requests and feedback from key stakeholders, we propose scheduling the work on Kangaroo Island for the third year of the rollout.

Figure 6 provides a high-level view of this balanced distribution on a year-by-year basis across our network.

Figure 6 - Proposed annual rollout profile by location



How does this align with the rules

LMRP Principle 2 - the overall efficiency of the *LMRP*, including costs and potential cost savings for affected *Market Participants*;

For example, Legacy Meters may be most efficiently retired in geographic groupings, such as by postcode, zone substation or meter reading route.

LMRP Principle 3 - the impact of the *LMRP* on Affected Retailers and other affected stakeholders; and

LMRP Principle 4 - appropriate and efficient workforce planning, including in regional areas.

We have taken the feedback of retailers and metering providers into account in developing our proposed LMRP, with the proposed LMRP geographic spread reflecting their preferences.

Meter Allocation

What is the purpose of this consideration

The concluding step of the process involved identifying the specific meters to be allocated for each year and location to enable the LMRP Schedule (what meter what year) to be created.

Options considered

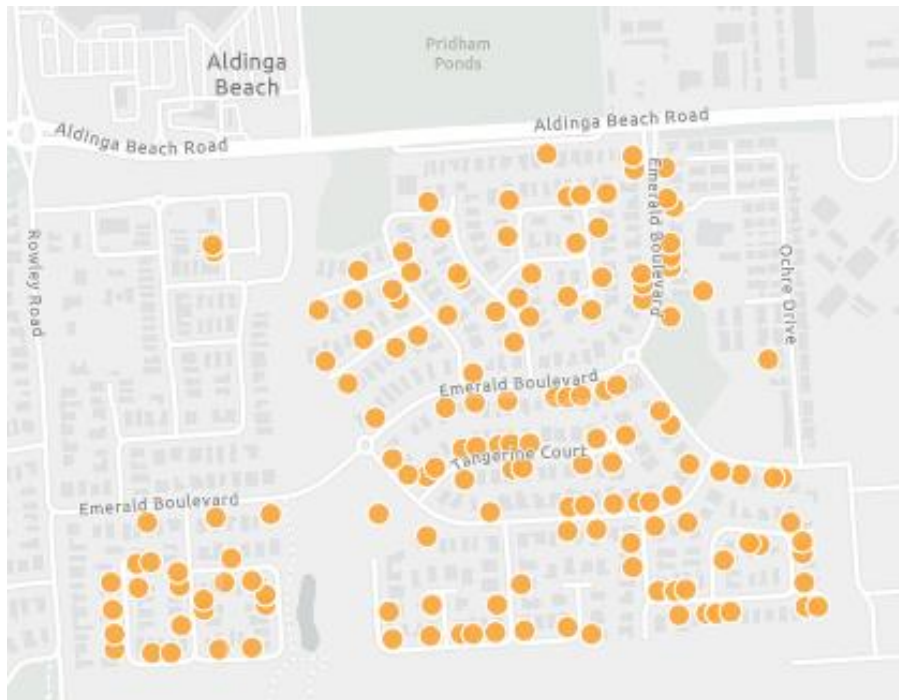
We adopted a single, practical strategy to manage the allocation of legacy meters, focusing on the use of established meter reading routes in each geographical area where legacy metering remains in use.

This strategy builds on the DNSP's long-standing practice of organising meters into efficient reading routes, a method that has been successfully utilised for many years. These routes provide a more detailed geographic grouping than broader areas such as postcodes, towns, or suburbs. This finer level of organisation is both logical and practical, offering retailers and metering coordinators the opportunity to cluster work more effectively. By reducing travel time between sites, this approach enables the efficient completion of multiple jobs within a single day.

To further enhance this strategy, we conducted a detailed analysis of these routes to determine the volume of meters within each area. This analysis allowed us to align the yearly allocation of meters with the target volumes required for both metropolitan and regional locations, ensuring a balanced, efficient, and well-coordinated LMRP schedule.

Figure 7 provides an example of how the use of meter reading routes allows for co-located metering to be identified and assigned to the same LMRP year.

Figure 7 - Example of meters by meter read route



Using meter reading routes also means that as legacy meters are replaced, these meter reading routes can be removed from our scheduled reading roster. Reducing some of the transitional costs for DNSPs.

What we heard

All stakeholders fully supported this approach, with no alternative suggestions put forward for consideration. The stakeholders sought a plan that maximised the potential for efficient implementation, and the utilisation of meter reading routes emerged as the best method to achieve this objective.

Proposed direction

Given the full support for the use of meter reading routes, these have been used to allocate meters within the LMRP Schedule.

How does this align with the rules

LMRP Principle 2 - the overall efficiency of the *LMRP*, including costs and potential cost savings for affected *Market Participants*;

For example, Legacy Meters may be most efficiently retired in geographic groupings, such as by postcode, zone substation or meter reading route.

LMRP Principle 3 - the impact of the *LMRP* on Affected Retailers and other affected stakeholders; and

LMRP Principle 4 - appropriate and efficient workforce planning, including in regional areas.

This approach directly aligns with the AEMC's principles, with meter reading routes one of the recommended groupings.

Other Considerations

During our engagement with stakeholders, we extended an invitation for them to suggest any additional considerations, which could be viewed as tactical priorities. These might include focusing on a specific customer segment in the early years of the *LMRP*, irrespective of their location or compatibility with the three key development framework considerations.

What we heard

We had productive discussions around this topic; however, no stakeholders expressed a desire to incorporate this into the *LMRP* planning. There was a concern among stakeholders that this might result in an imbalance of work. Their preference was to ensure that any customer segment is distributed evenly based on location.

Proposed direction

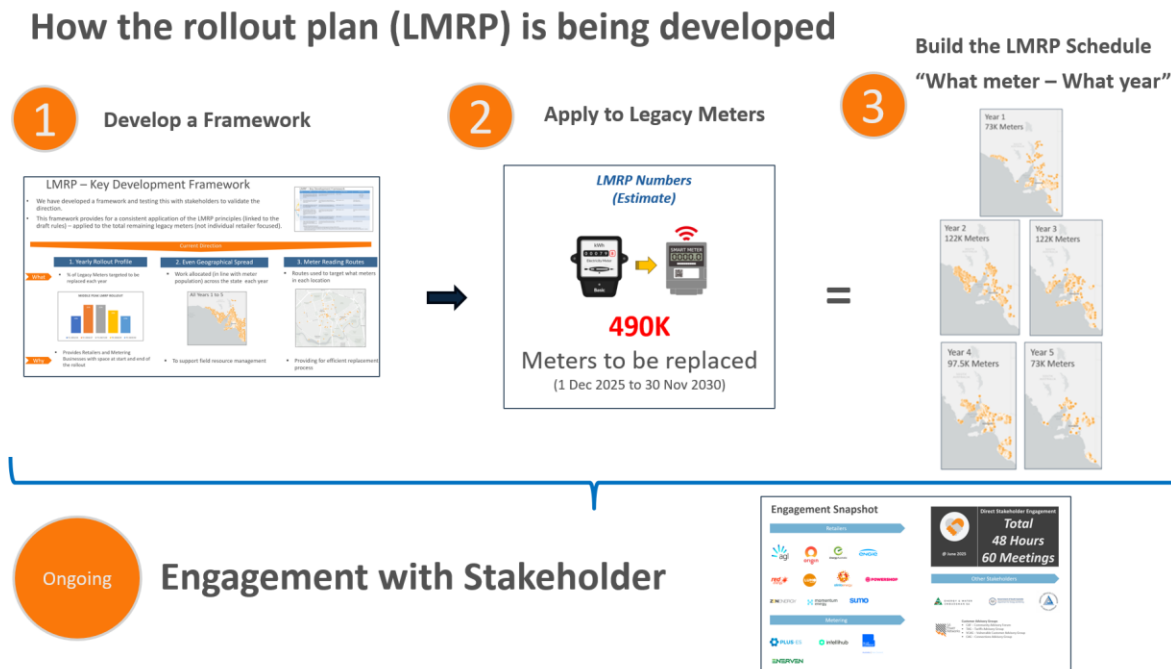
No changes were required to the proposed *LMRP* schedule to address additional considerations or tactical priorities.

6. LMRP Schedule

The LMRP Schedule is the detailed level of the planning process. The schedule provides a full list of NMI's (connection points) and meters and details the specific LMRP year they have been targeted for replacement.

Refer to Figure 8 for an overview of the end-to-end process used to develop our schedule.

Figure 8 – End-to-end process to develop LMRP schedule



We have applied the key development framework principles as set out in this document to develop our LMRP schedule.

When developing and consulting on the application of Key Development Framework, this included the following key points:

- It should be viewed from an overall state perspective and the best approach to develop an efficient LMRP.
- The criteria will be used to guide the development of the LMRP Schedule (some variations may occur to balance volumes and factor in actual basic metering fleet locations).
- Some retailer variations are also expected to manage the overall meter change efficiency for Metering Businesses (individual Retailer LMRP Schedules may not align with the percentages listed – variations driven by customer base location).

The following tables provide a high-level view of SA Power Networks proposed LMRP Schedule (current numbers as at 1 June 2025).

Table 2 - Annual profile across entire network (% and meter volume)

Year 1	Year 2	Year 3	Year 4	Year 5
15%	25%	25%	20%	15%
78,290	126,919	129,862	103,068	78,544

LMRP - Year 1

Table 3 – Year 1 profile across entire network

Region	Meters	%
Adelaide - Central and Hills	12,263	14%
Adelaide - North	15,071	15%
Adelaide - South	14,013	15%
Adelaide - West	11,041	15%
Barossa - Yorke - Mid North	7,904	17%
South Australia - Outback	4,449	14%
South Australia - South East	13,549	16%
Total	78,290	15%

Figure 9 – Year 1 profile across entire network



LMRP - Year 2

Table 4 – Year 2 profile across entire network

Region	Meters	%
Adelaide - Central and Hills	21,911	24%
Adelaide - North	23,885	25%
Adelaide - South	22,495	24%
Adelaide - West	18,354	25%
Barossa - Yorke - Mid North	11,704	26%
South Australia - Outback	7,770	25%
South Australia - South East	20,800	24%
Total	126,919	25%

Figure 10 – Year 2 profile across entire network



LMRP - Year 3

Table 5 – Year 3 profile across entire network

Region	Meters	%
Adelaide - Central and Hills	22,377	25%
Adelaide - North	24,204	25%
Adelaide - South	23,020	25%
Adelaide - West	19,342	26%
Barossa - Yorke - Mid North	11,409	25%
South Australia - Outback	7,926	26%
South Australia - South East	21,584	25%
Total	129,862	25%

Figure 11 – Year 3 profile across entire network



LMRP - Year 4

Table 6 – Year 4 profile across entire network

Region	Meters	%
Adelaide - Central and Hills	18,940	21%
Adelaide - North	19,294	20%
Adelaide - South	19,051	20%
Adelaide - West	14,698	20%
Barossa - Yorke - Mid North	7,947	17%
South Australia - Outback	6,386	21%
South Australia - South East	16,752	20%
Total	103,068	20%

Figure 12 – Year 4 profile across entire network



LMRP - Year 5

Table 7 – Year 5 profile across entire network

Region	Meters	%
Adelaide - Central and Hills	14,260	16%
Adelaide - North	14,794	15%
Adelaide - South	14,402	15%
Adelaide - West	11,321	15%
Barossa - Yorke - Mid North	6,872	15%
South Australia - Outback	4,498	14%
South Australia - South East	12,397	15%
Total	78,544	15%

Figure 13 – Year 5 profile across entire network



How well does the LMRP Schedule align with the Key Development Framework

As is evident from the numbers presented within the tables, the LMRP Schedule aligns with the agreed Key Development Framework.

Further analysis of data at a retailer level (not shared in this document for privacy/confidentiality reasons) also provides a balanced outcome.

As part of our consultation process in developing the LMRP, SA Power Networks provided retailers who requested to engage in the development process with a detailed NMI list that aligns with this high-level data. Additionally, we supplied metering stakeholders with LMRP yearly state-based data, which includes the volume and type of metering per postcode and suburb.

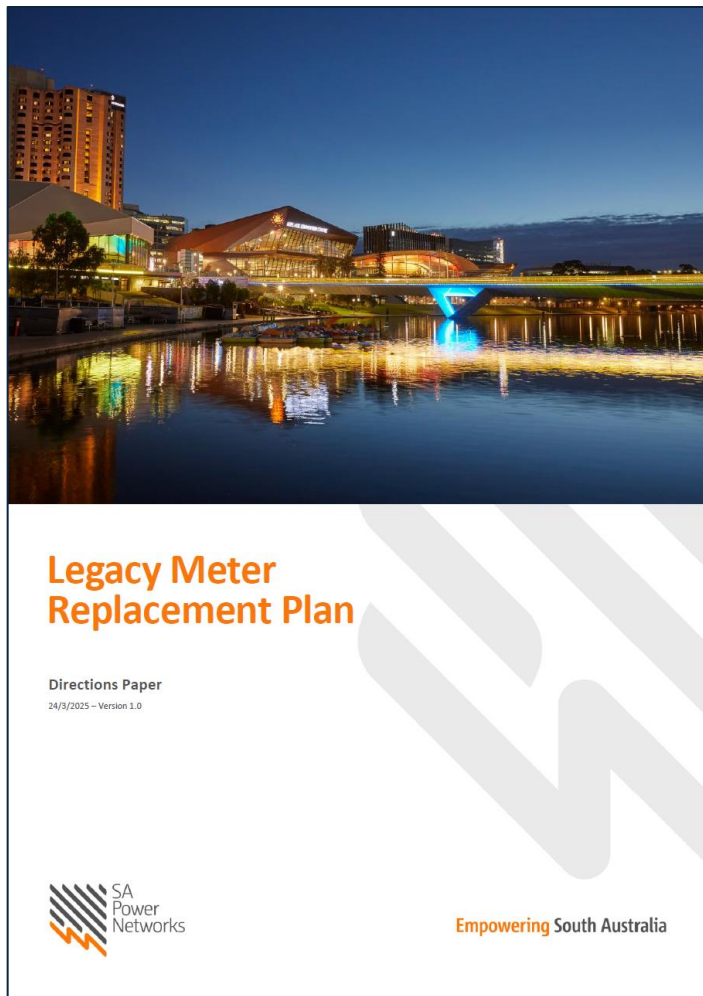
What we heard

After providing detailed data to those retailers who chose to participate in the development process, as well as metering coordinators, and allowing them time to review, almost all stakeholders have provided full support for the LMRP Schedule, with no alternative suggestions submitted for consideration.

Proposed direction

Given the very strong support for the proposed LMRP Schedule, SA Power Networks intends to proceed with this direction.

7. Direction Paper Consultation



*Very strong
support
received
from
Stakeholders*

Approach

On 24 March 2025, SA Power Networks commenced our final phase of engagement with key stakeholders by releasing our 'Direction Paper' for the LMRP.

The objective of this engagement was to present our proposed direction for the LMRP to stakeholders. This direction was determined, giving full considering of the preferences and feedback we received from stakeholders throughout the course of 2024.

The document maintained consistency with previously shared information, introducing no new concepts.

In addition to the document, we provided all stakeholders with a spreadsheet linked to the LMRP Schedule V1. This spreadsheet presented a detailed view of SA Power Networks' Total NMI and Meter Volumes, organised by Post Code and Suburb. We encouraged all retailers to contact SA Power Networks if they wished to obtain their detailed NMI list.

We also extended an invitation to all stakeholders to schedule a meeting with SA Power Networks if they wanted to discuss the content or any matters pertaining to the LMRP.

The table below provides information on the range of stakeholders who were invited to contribute to this review:

Table 8 – Direction Paper stakeholder engagement

Stakeholder Category	Issued Volume	Responses Received
Retailers	34	11
Metering Coordinators	4	3
Regulatory/Jurisdictional Bodies	3	1
Customer Advisory Groups	2	5

Notes –

- Individually directed emails were sent to 11 retailers and 4 metering coordinators who had engaged in previous LMRP development activities throughout 2024.
- The AEMO managed industry Retailer Operational Contact List (ROCL) was used to source business relations contact emails addresses for all other retailers with customers who continue to have legacy meters that would be incorporated into the LMRP.
- All members of SA Power Networks' Community Advisory Forum (CAF) and Connection Advisory Group (CAG) were provided with the material – 5 individual members provided feedback.

What we heard

SA Power Networks sought feedback from stakeholders to specific questions to ensure that their perspectives were accurately represented and to verify that our proposed direction had substantial support from the stakeholder community.

The following table provides results of the feedback received:

Table 9 – Direction Paper question 1 & 2 feedback

Question	Responses
1. Do you support the LMRP Key Development Framework proposed direction as presented?	16 out of 17 provided positive support
2. Do you support the LMRP Schedule that has resulted from the application of the Key Development Framework?	16 out of 17 provided positive support

One retailer, representing just 0.19% of total legacy meters due for replacement, supported parts of our planning rationale but did not agree with the overall plan. Their first-year rollout profile (32%) is higher than the general Yearly Rollout Profile. However, their rollout over the next four years aligns with or falls below the overall profile.

The remaining stakeholders, which includes the perspectives of large, medium, and small-sized retailers who represent over 99%¹ of the total legacy metering due for replacement, along with the three primary metering businesses, have all expressed favorable support.

We understand that the rollout presents challenges for all retailers and their meter coordinators, irrespective of their customer base size.

¹ Where a retailer did not respond, we have interpreted their lack of response as an indication of support.

We recognised that it's not always possible to create a plan that satisfies all stakeholders. Noting this, we are confident that we have provided all stakeholders with the opportunity to participate, and our approach delivers a balanced outcome that aligns with the AEMC Objective and Principles.

SA Power Networks also asked stakeholders two additional questions, as provided in Table 10 below.

Table 10 – Direction Paper question 3 & 4 feedback

Question	Feedback Summary
3. Is there any further engagement you wish to have with SA Power Networks prior to the LMRP being provided to the AER for approval (if yes, please provide information on what you wish to discuss)?	<ul style="list-style-type: none"> Majority of stakeholders answer “No” or did not provide a response. No stakeholder requested further engagement. 4 detailed responses received to the question – the responses related to provision of NMI data only for planning purpose.
4. Do you have any additional feedback you wish to provide?	<ul style="list-style-type: none"> Majority of stakeholders answer “No” or did not provide a response. 1 response suggested reporting on progress of the rollout would provide value. 2 responses request further discussion regarding the multi-site “One In All In” process.

Proposed direction following review of feedback

SA Power Networks has thoroughly examined all feedback we have received during all stages of engagement and given the very strong support from nearly all stakeholders during this confirmation stage of engagement, we have concluded that no changes to the LMRP direction are necessary. Consequently, we are submitting our LMRP to the AER for approval, unchanged from the version we consulted on during the 'Direction Paper'.

8. Implementation of the LMRP

In this section of the document, we address key issues that have emerged during the engagement process and the development of our LMRP. We acknowledge the complexity of the tasks ahead and are dedicated to collaborating with stakeholders and to positively contributing to a successful implementation.

Residual meters into the future

SA Power Networks has limited data on actual customer installations and estimates up to 20%² or 100,000 legacy meters may remain in service on 1 December 2030, where the retailer has been unable to replace the legacy meter during the replacement period.

The reasons for non-replacement include but are not limited to:

- Customer refusal (a customer refuses to allow access to change the meter);
- Disconnected sites (a disconnected site will not have a meter change, but the site may be reconnected in the future); or
- Out of specification meter board or internal wiring (a site may require significant internal upgrades to allow for the meter to be changed, which the customer is reluctant or unable to complete).

It is anticipated that over time, more of these connections will receive a smart meter as housing stock is renewed or redeveloped or no longer require a connection as sites are permanently disconnected and abolished.

Concerns Related to Site Remediation Costs

The issue of site remediation costs (particularly for vulnerable customers) was raised during the AEMC Metering Review process and continued throughout the formal Rule Change process.

During the engagement and development of our LMRP, a wide range of stakeholders have continued to raise concerns seeking understanding of how this issue will be addressed.

The AEMC suggested that jurisdictional bodies within each state determine the kind of support customers should be provided to tackle this issue.

While this does not directly impact the development of the Legacy Meter Replacement Plan, we are continuing to advocate with the SA Government Department for Energy and Mining, seeking information on support measures that may be available to customers during the rollout.

Safety

While the industry's objective is to accelerate the rollout of smart metering, aiming for comprehensive coverage by 2030, safety must remain a key priority. The responsibility for ensuring a safe rollout primarily rests with retailers and metering businesses, as they are accountable for work conducted at customer sites. SA Power Networks will not be directly involved in this process.

It is important to acknowledge that the rollout of smart metering is already well underway, with more than 50% of legacy meters replaced by smart meters through the efforts of retailers and metering businesses. In

² SA Power Networks originally estimated 15% of legacy meters may remain in service after 30 November 2030, where the retailer has been unable to replace the legacy meter during the replacement period. Following retailer and metering business consultation, we have revised this estimate to be 20% which represents the consolidated position based on their feedback.

particular, metering businesses have well-established work practices in place to ensure the safe and efficient delivery of this program.

As an industry, relevant data is recorded in AEMO’s market system, MSATS, which is accessible to market participants with appropriate rights. Additionally, the Business-to-Business (B2B) Site Access Notification is available as a tool to facilitate information sharing. This transaction allows an initiating market participant to request access and hazard information from a receiving market participant, ensuring that up-to-date site information is available to support safe operations.

SA Power Networks remains fully committed to supporting safe outcomes and will continue to provide relevant assistance to retailers and metering businesses wherever possible.

Plug-in Metering

Plug-in metering is a subset of legacy metering that can present challenges to retailers and metering businesses during the replacement process as there are no equivalent plug-in interval meters. We understand from discussions with these stakeholders that in some scenarios they are yet to find a metering solution.

Figure 14 – Plug-in metering information

Plug-In Metering

- SA Power Networks have 5 variations of Plug-in meters:



YA1828
Email M3S
(9003*)



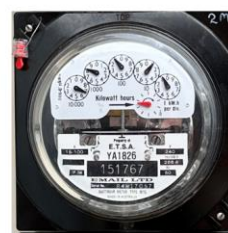
YA1842
L&G CM170xf3
(5938*)



YA4930
Ampy EM1200
(1635*)



YA4972
Nilsen EMS2100
(2710*)



YA1826
Email M1S
(Only very small
volume remaining)

Note – YA+(number) used in internal SA Power Networks system

** Approx. May 2025 Meter Population numbers*

During the development of our LMRP, SA Power Networks has shared information regarding the type and volume of plug-in metering that remain in service.

Multi-site ‘One In All In’ Process

One of the outcomes of the AEMC rule change process was the establishment of a Shared Fusing Meter Replacement Procedure (Procedure) for meter upgrades on a shared fuse.

Under this Procedure, if metering work at a small customer metering installation requires the interruption of supply to other small customers, this triggers an upgrade for all affected customers at that site.

This strategy adopts a "one in all in" approach, where all meters on the shared fuse are upgraded at the same time. The Procedure will be applied consistently to all sites that do not have defects, site access issues, or safety concerns that could hinder installation.

During our engagement, several stakeholders raised queries about this process, seeking to understand how it will function.

As a member of the industry's Business to Business Working Group (B2BWG), SA Power Networks has played a key role in developing the detailed procedures that outline the supporting industry transactions. These procedures were finalised in April 2025, and we are currently working internally to develop and implement the necessary process and system changes.

As we approach the commencement of the rollout on 1 December 2025, having a clear understanding of the developed industry B2B Procedures allows us to build upon the discussions we've had with retailers and metering businesses. If feasible, we aim to conduct some controlled trials before the process begins.

Unfortunately, precise information regarding the sites (where and how many) is not available. However, we have initiated work aimed at enhancing our understanding.

As an industry, we acknowledge that integrating this process into our operational teams will be challenging and may take some time to fully implement. Nevertheless, we are dedicating significant efforts to ensure as smooth a transition as possible.

Industry Keys

SA Power Networks has raised the topic of industry keys with stakeholders (particularly metering businesses) and the information provided by these parties indicates that keys are not an issue in South Australia.

Communications

Providing clear information to customers during the implementation of the rollout process is crucial and a key factor in achieving a successful outcome.

While the primary responsibility for direct customer communications lies with the retailer, SA Power Networks anticipates playing a supportive role. We are contributing to the work being done at an industry level and are hopeful that the outputs from the AEMC managed process will be available soon.

SA Power Networks plans to provide customers with relevant information on our website and will continue to work closely stakeholders to build their understanding and support customers that make direct contact with our teams.

Ongoing Support

As we transition from the planning and approval phase to the implementation stage of the rollout process, SA Power Networks remains committed to delivering a successful outcome. To support this commitment, we established a dedicated senior role in September 2023, specifically focused on overseeing the rollout. This role will be maintained throughout the entire period to actively monitor progress, engage with retailers and metering businesses, identify any implementation challenges, and assist in resolving issues wherever possible.

In addition, SA Power Networks has well-established operational teams in place, supported by comprehensive plans to supplement resources as needed during the rollout. These measures will ensure that any increased workload is managed effectively and efficiently, enabling us to maintain high standards of service throughout the process.

Appendix 1: Additional supporting documentation

Provision of detailed data

SA Power Networks has included two supporting spreadsheets as attachments to assist with the LMRP submission:

1. **Spreadsheet titled “SA Power Networks LMRP Schedule V1 All Years with Post Code & Suburb Volumes”**
This spreadsheet provides a detailed view of each LMRP year, including the volume of meters allocated to that year, linked to their corresponding postcodes and suburbs.
2. **Spreadsheet titled “Confidential – SA Power Networks LMRP Schedule V1 Legacy NMI’s with LMRP Year”**
This spreadsheet contains a comprehensive list of legacy metering NMI’s, along with their respective LMRP year allocations.

These documents have been provided to the Australian Energy Regulator (AER) to support the approval process of the LMRP.

Following formal approval from the AER, SA Power Networks will finalise the allocation of the LMRP to the relevant NMI’s. This process will be completed within the Australian Energy Market Operator's (AEMO) Market Settlement and Transfer Solution (MSATS) system during November 2025.

Engagement Material

The table below contains a list of meeting material developed and used by SA Power Networks during the engagement and development of our LMRP. These can be made available to the AER upon request.

Table 11 – Engagement Material Catalogue

Meeting Material	Who was involved	Purpose
Retailer Initial Discussion Presentation	6 Retailers representing 94% of legacy meters	<ul style="list-style-type: none"> Commence engagement and explain engagement approach Build common understanding of the rollout and how to develop the LMRP Discuss the key consideration that help to build the Key Development Framework Seek input and feedback
Metering Business Initial Discussion Presentation	3 Metering Coordinators (nominated by the above retailers)	<ul style="list-style-type: none"> Commence engagement and explain engagement approach Build common understanding of the rollout and how to develop the LMRP Discuss the key consideration that help to build the Key Development Framework Seek input and feedback
LMRP Development Update May 2024 Presentation	6 Retailers representing 94% of legacy meters	<ul style="list-style-type: none"> Share the outcomes and feedback from the consultation on the Key Development Framework

Meeting Material	Who was involved	Purpose
	3 Metering Coordinators (nominated by the above retailers)	<ul style="list-style-type: none"> • Provide the current direction of the LMRP Framework • Provide information and detailed data of the LMRP Schedule • Seek input and feedback
Smart Meter Rollout & LMRP Development Direction Overview to Retailers Presentation	5 additional Retailers who responded to request for engagement	<ul style="list-style-type: none"> • Provide the current direction of the LMRP Framework • Provide information and detailed data of the LMRP Schedule • Seek input and feedback
Smart Meter Rollout & LMRP Development Update – Customer advisory forums representing end use customers in South Australia	<ul style="list-style-type: none"> • Community Advisory Forum (CAF) • Connection Advisory Group (CAG) • Vulnerable Customer Advisory Group (VCAG) • Tariff Advisory Group (TAG) 	<ul style="list-style-type: none"> • Provide information and update on the AEMC rule change • Share information on the development of the SA Power Networks' LMRP • Provide opportunity for any member to have further involvement in the development process, seek further information or provide input
Smart Meter Rollout & LMRP Development Direction Overview to EWOSA	<ul style="list-style-type: none"> • EWOSA 	<ul style="list-style-type: none"> • Provide information and update on the AEMC rule change • Share information on the development of the SA Power Networks' LMRP • Provide opportunity for further involvement in the development process
Smart Meter Rollout & LMRP Development Direction Overview to DEM	<ul style="list-style-type: none"> • Department of Energy and Mining (DEM) 	<ul style="list-style-type: none"> • Provide information and update on the AEMC rule change • Share information on the development of the SA Power Networks' LMRP • Provide opportunity for further involvement in the development process
Smart Meter Rollout & LMRP Development Direction Overview to ESCOSA	<ul style="list-style-type: none"> • ESCOSA 	<ul style="list-style-type: none"> • Provide information and update on the AEMC rule change • Share information on the development of the SA Power Networks' LMRP • Provide opportunity for further involvement in the development process
Direction Paper for Consultation and Engagement with Retailers Regarding the Smart Meter Rollout - V1.0	<p><u>Retailers</u></p> <ul style="list-style-type: none"> • 34 Retailers <p>4 Metering service providers</p> <p><u>Other</u></p> <ul style="list-style-type: none"> • ESCOSA • EWOSA • DEM • CAF • CAG 	<ul style="list-style-type: none"> • Provide all stakeholders with key information • Guide the final engagement process for the SA Power Networks LMRP

Appendix 2: AER List of considerations for reviewing LMRPs

On 3 June 2025, the AER issued a letter to networks titled “Legacy Meter Replacement - Letter to DNSPs Providing Guidance”. This letter included a list of considerations for reviewing Legacy Meter Replacement Plan (LMRPs), provided as Attachment B. The table below outlines how SA Power Networks has addressed each of these items within this document.

Consideration	Relevant obligation	Where SAPN has addressed this matter in this LMRP document (Section/Page)
1 Does the LMRP cover all Legacy Meters at connection points other than embedded networks?	11.177.2(a)	<ul style="list-style-type: none"> About SA Power Networks (page 5) LMRP Schedule (pages 18 to 21)
2 Does the LMRP comply with the LRMP Objective, i.e., does it cover the replacement of Legacy Meters with type 4 metering installations in a manner that is timely, cost effective, fair and safe within the LRMP period?	11.177.2(a)	<ul style="list-style-type: none"> Key Development Framework (pages 11 to 17)
3 Does the LMRP include a description of how it is compliant with the LRMP Objective?	11.177.2(b)(2)	<ul style="list-style-type: none"> Executive Summary (page 4) Key Development Framework (pages 11 to 17)
4 Does the LMRP include outline of the replacement profile over the LRMP period, including: (a) the total number of Legacy Meters to be replaced (b) the corresponding NMI for each Legacy Meter (c) the number to be replaced in each Interim Period.	11.177.2(b)(1)(i)	<ul style="list-style-type: none"> LMRP Schedule (pages 18 to 21) Appendix 1 – Provision of detailed data (page 29)
5 For LMRPs that propose to replace Legacy Meters in groups (e.g. by postcode or by geographical area), does the LMRP outline: (a) the proposed grouping of Legacy Meters (b) which groups are to be replaced in each Interim Period.	11.177.2(b)(1)(ii)	<ul style="list-style-type: none"> Key Development Framework (pages 11 to 17) LMRP Schedule (18 to 21)
6 Does the LMRP when developing the LRMP have regard to the LRMP Principles, i.e.: (a) the number of Legacy Meters planned for replacement in each Interim Period (which should be between approximately 15–25 per cent of the total to be replaced under the LRMP) (b) the overall efficiency of the LRMP including: (i) costs (ii) potential cost savings (for example, the plan may involve grouping by area)	11.177.2(c)	<ul style="list-style-type: none"> Key Development Framework (pages 10 to 16) LMRP Schedule (pages 18 to 21)

Consideration	Relevant obligation	Where SAPN has addressed this matter in this LMRP document (Section/Page)
(c) the impact of the LMRP on Affected Retailers and other affected stakeholders (d) appropriate and efficient workforce planning, including in regional areas.		
7 Does the LMRP include a description of how the LNSP has had regard to the LMRP principles?	11.177.2(b)(2)	<ul style="list-style-type: none"> • Key Development Framework (pages 11 to 17)
8 Does the LMRP include a description of: (a) how LNSP engaged with relevant stakeholders, including: (i) Affected Retailers (ii) relevant Metering Coordinators (iii) relevant local and state governments (iv) distribution end users and groups representing them (b) the relevant concerns identified in this consultation (c) how they sought to address these concerns.	11.177.2(b)(3)	<ul style="list-style-type: none"> • Our approach to developing the LMRP (pages 6 to 8) • Engagement summary (pages 9 to 10) • Key Development Framework (page 11 to 17) • LMRP Schedule (page 18 to 21) • Direction Paper (page 22 to 24)
9 Did the LNSP: (a) provide a draft LMRP to Affected Retailers (b) provide a schedule specifying the Legacy Meters and corresponding NMIs to be replaced in each Interim Period to Affected Retailers and Metering Coordinators (c) invite feedback on the draft LMRP by 28 February 2025 and ahead of the submission of the draft LMRP to the AER?	11.177.3	<ul style="list-style-type: none"> • Engagement summary (pages 9 to 10) • Key Development Framework (page 11 to 17) • LMRP Schedule (page 18 to 21) • Direction Paper (page 22 to 24)
10 Was the LMRP submitted to the AER no later than 30 June 2025?	11.177.4(a)	<ul style="list-style-type: none"> • Yes

Post Code & Suburb	Count of Meters	Count of NMI's
5000	808	784
ADELAIDE	808	784
5006	86	84
NORTH ADELAIDE	86	84
5007	261	252
BOWDEN	36	36
BROMPTON	151	142
HINDMARSH	56	56
WELLAND	14	14
WEST HINDMARSH	4	4
5008	49	48
BROMPTON	2	1
CROYDON	5	5
CROYDON PARK	20	20
DEVON PARK	1	1
DUDLEY PARK	12	12
RENOWN PARK	1	1
RIDLEYTON	6	6
WEST CROYDON	2	2
5009	56	53
BEVERLEY	36	34
KILKENNY	20	19
5010	58	56
ANGLE PARK	13	13
FERRYDEN PARK	1	1
REGENCY PARK	44	42
5011	764	714
ST CLAIR	410	410
WOODVILLE	7	7
WOODVILLE PARK	7	7
WOODVILLE SOUTH	336	287
WOODVILLE WEST	4	3
5012	37	34
ATHOL PARK	8	8
MANSFIELD PARK	1	1
WOODVILLE GARDENS	3	3
WOODVILLE NORTH	25	22
5013	801	725
GILLMAN	18	18
OTTOWAY	6	6
PENNINGTON	273	220
ROSEWATER	9	8
WINGFIELD	495	473
5014	59	59
ALBERT PARK	9	9
ALBERTON	5	5
CHELTENHAM	3	3
HENDON	6	6
QUEENSTOWN	3	3
ROYAL PARK	30	30
ST CLAIR	3	3
5015	1108	1050
BIRKENHEAD	6	6
ETHELTON	486	445
GARDEN ISLAND	2	2

Post Code & Suburb	Count of Meters	Count of NMI's
GLANVILLE	246	230
NEW PORT	302	302
PORT ADELAIDE	63	63
TORRENS ISLAND	3	2
5016	1008	911
LARGS BAY	631	566
LARGS NORTH	234	209
PETERHEAD	143	136
5017	318	284
OSBORNE	200	183
TAPEROO	118	101
5018	211	193
NORTH HAVEN	201	183
OUTER HARBOR	10	10
5019	3086	2861
EXETER	390	363
SEMAPHORE	899	851
SEMAPHORE PARK	1395	1304
SEMAPHORE SOUTH	402	343
5020	855	727
TENNYSON	1	1
WEST LAKES SHORE	854	726
5021	652	596
WEST LAKES	652	596
5022	110	100
GRANGE	7	7
HENLEY BEACH	25	25
HENLEY BEACH SOUTH	4	4
TENNYSON	74	64
5023	588	538
FINDON	171	143
SEATON	417	395
5024	64	62
FULHAM	20	19
FULHAM GARDENS	14	13
WEST BEACH	30	30
5025	608	525
FLINDERS PARK	307	266
KIDMAN PARK	301	259
5031	115	115
MILE END	19	19
MILE END SOUTH	32	32
THEBARTON	38	38
TORRENSVILLE	26	26
5032	23	23
BROOKLYN PARK	10	10
LOCKLEYS	8	8
UNDERDALE	5	5
5033	64	62
COWANDILLA	3	3
HILTON	22	21
MARLESTON	22	22
RICHMOND	15	14
WEST RICHMOND	2	2
5034	369	334

Post Code & Suburb	Count of Meters	Count of NMI's
CLARENCE PARK	228	201
GOODWOOD	55	55
KINGS PARK	4	3
MILLSWOOD	58	52
WAYVILLE	24	23
5035	42	41
ASHFORD	3	3
BLACK FOREST	4	4
EVERARD PARK	5	4
FORESTVILLE	2	2
KESWICK	20	20
KESWICK TERMINAL	8	8
5037	41	38
GLANDORE	8	7
KURRALTA PARK	3	3
NETLEY	9	8
NORTH PLYMPTON	21	20
5038	37	37
CAMDEN PARK	14	14
PLYMPTON	6	6
PLYMPTON PARK	3	3
SOUTH PLYMPTON	14	14
5039	84	83
CLARENCE GARDENS	12	12
EDWARDSTOWN	46	45
MELROSE PARK	26	26
5041	327	278
COLONEL LIGHT GARDENS	52	50
CUMBERLAND PARK	268	221
DAW PARK	4	4
WESTBOURNE PARK	3	3
5042	36	36
BEDFORD PARK	5	5
CLOVELLY PARK	1	1
PASADENA	7	7
ST MARYS	20	20
TONSLEY	3	3
5043	25	24
ASCOT PARK	5	4
MARION	9	9
MITCHELL PARK	6	6
MORPHETTVILLE	1	1
PARK HOLME	4	4
5044	13	12
GLENGOWRIE	2	2
SOMERTON PARK	11	10
5045	607	439
GLENELG	584	416
GLENELG EAST	5	5
GLENELG NORTH	14	14
GLENELG SOUTH	4	4
5046	10	10
OAKLANDS PARK	5	5
WARRADALE	5	5
5047	15	15

Post Code & Suburb	Count of Meters	Count of NMI's
DARLINGTON	3	3
SEACOMBE GARDENS	7	7
SEACOMBE HEIGHTS	1	1
STURT	4	4
5048	634	594
BRIGHTON	27	27
DOVER GARDENS	585	545
HOVE	6	6
NORTH BRIGHTON	2	2
SOUTH BRIGHTON	14	14
5049	7	7
MARINO	1	1
SEACLIFF	3	3
SEACLIFF PARK	2	2
SEAVIEW DOWNS	1	1
5050	3	3
BELLEVUE HEIGHTS	2	2
EDEN HILLS	1	1
5051	557	437
BLACKWOOD	377	301
COROMANDEL VALLEY	155	120
CRAIGBURN FARM	3	3
HAWTHORNDENE	22	13
5052	685	481
BELAIR	290	205
GLENALTA	395	276
5061	79	68
HYDE PARK	7	7
MALVERN	10	10
PARKSIDE	3	3
UNLEY	58	47
UNLEY PARK	1	1
5062	1278	1061
BROWN HILL CREEK	21	15
CLAPHAM	32	27
HAWTHORN	6	6
KINGSWOOD	5	5
LOWER MITCHAM	209	191
LYNTON	55	38
MITCHAM	289	226
SPRINGFIELD	35	22
TORRENS PARK	626	531
5063	269	238
EASTWOOD	17	17
FREWILLE	7	7
FULLARTON	17	14
HIGHGATE	1	1
PARKSIDE	226	198
UNLEY	1	1
5064	31	29
GLEN OSMOND	5	5
GLENUNGA	12	11
MOUNT OSMOND	4	4
MYRTLE BANK	5	4
URRBRAE	5	5

Post Code & Suburb	Count of Meters	Count of NMI's
5065	21	19
DULWICH	7	5
GLENSIDE	2	2
LINDEN PARK	7	7
TOORAK GARDENS	2	2
TUSMORE	3	3
5066	8	6
BEAUMONT	1	1
BURNSIDE	3	2
WATERFALL GULLY	3	2
WATTLE PARK	1	1
5067	106	104
BEULAH PARK	3	3
KENT TOWN	29	28
NORWOOD	69	68
ROSE PARK	5	5
5068	28	28
KENSINGTON	4	4
KENSINGTON GARDENS	2	2
KENSINGTON PARK	4	4
LEABROOK	10	10
ST MORRIS	4	4
TRINITY GARDENS	4	4
5069	50	48
EVANDALE	5	5
HACKNEY	10	8
MAYLANDS	1	1
ST PETERS	10	10
STEPNEY	24	24
5070	55	55
FELIXSTOW	3	3
FIRLE	5	5
GLYNDE	23	23
MARDEN	13	13
PAYNEHAM	5	5
PAYNEHAM SOUTH	1	1
ROYSTON PARK	5	5
5072	166	112
MAGILL	16	16
SKYE	1	1
TERINGIE	144	90
WOODFORDE	5	5
5073	7	6
HECTORVILLE	6	5
ROSTREVOR	1	1
5074	51	48
CAMPBELLTOWN	13	13
NEWTON	38	35
5075	11	11
DERNANCOURT	3	3
PARADISE	8	8
5076	8	8
ATHELSTONE	7	7
CASTAMBUL	1	1
5081	24	23

Post Code & Suburb	Count of Meters	Count of NMI's
GILBERTON	3	3
MEDINDIE	7	7
VALE PARK	3	3
WALKERVILLE	11	10
5082	62	62
OVINGHAM	3	3
PROSPECT	59	59
5083	7	7
BROADVIEW	1	1
NAILSWORTH	4	4
SEFTON PARK	2	2
5084	42	42
BLAIR ATHOL	13	13
KILBURN	29	29
5085	1309	1301
BLAIR ATHOL	2	1
CLEARVIEW	3	3
ENFIELD	9	9
LIGHTSVIEW	775	772
NORTHFIELD	5	5
NORTHGATE	515	511
5086	838	793
GILLES PLAINS	8	8
GREENACRES	6	5
HAMPSTEAD GARDENS	4	4
HILLCREST	258	243
OAKDEN	562	533
5087	33	33
KLEMZIG	21	21
WINDSOR GARDENS	12	12
5088	14	14
HOLDEN HILL	14	14
5089	459	382
HIGHBURY	459	382
5090	239	216
HOPE VALLEY	239	216
5091	14	13
BANKSIA PARK	3	3
TEA TREE GULLY	11	10
5092	37	37
MODBURY	22	22
MODBURY HEIGHTS	3	3
MODBURY NORTH	12	12
5093	6	6
PARA VISTA	4	4
VALLEY VIEW	2	2
5094	163	156
CAVAN	74	70
DRY CREEK	29	29
GEPPS CROSS	60	57
5095	2705	2664
GEPPS CROSS	1	1
MAWSON LAKES	2649	2609
POORAKA	55	54
5096	17	17

Post Code & Suburb	Count of Meters	Count of NMI's
GULFVIEW HEIGHTS	1	1
PARA HILLS	7	7
PARA HILLS WEST	9	9
5097	24	24
RIDGEHAVEN	9	9
ST AGNES	15	15
5098	402	397
INGLE FARM	4	4
WALKLEY HEIGHTS	398	393
5106	31	31
PARAFIELD	8	8
SALISBURY SOUTH	23	23
5107	147	134
GREEN FIELDS	68	61
PARAFIELD GARDENS	79	73
5108	58	58
PARAFIELD	1	1
PARALOWIE	13	13
SALISBURY	28	28
SALISBURY DOWNS	9	9
SALISBURY NORTH	7	7
5109	27	27
BRAHMA LODGE	3	3
SALISBURY EAST	4	4
SALISBURY HEIGHTS	4	4
SALISBURY PARK	2	2
SALISBURY PLAIN	14	14
5110	719	609
BOLIVAR	22	20
BURTON	44	44
DIREK	1	1
GLOBE DERBY PARK	88	70
ST KILDA	51	44
WATERLOO CORNER	513	430
5111	14	14
EDINBURGH	14	14
5112	72	69
ELIZABETH	38	35
ELIZABETH EAST	6	6
ELIZABETH GROVE	5	5
ELIZABETH SOUTH	16	16
ELIZABETH VALE	5	5
GOULD CREEK	1	1
HILLBANK	1	1
5113	1383	1154
DAVOREN PARK	1268	1043
EDINBURGH NORTH	98	96
ELIZABETH DOWNS	12	10
ELIZABETH NORTH	3	3
ELIZABETH PARK	2	2
5114	2979	2773
ANDREWS FARM	1283	1263
BLAKEVIEW	497	494
CRAIGMORE	312	299
GOULD CREEK	50	38

Post Code & Suburb	Count of Meters	Count of NMI's
HUMBUG SCRUB	94	70
ONE TREE HILL	217	168
SAMPSON FLAT	41	31
SMITHFIELD	326	287
SMITHFIELD PLAINS	11	11
ULEYBURY	68	51
YATTALUNGA	80	61
5115	1083	1036
ANGLE VALE	2	1
KUDLA	1	1
MUNNO PARA	45	45
MUNNO PARA DOWNS	48	34
MUNNO PARA WEST	987	955
5116	17	17
EVANSTON	13	13
EVANSTON GARDENS	1	1
EVANSTON PARK	2	2
HILLIER	1	1
5117	630	535
ANGLE VALE	630	535
5118	63	61
GAWLER	35	35
GAWLER BELT	2	2
GAWLER EAST	6	4
GAWLER SOUTH	9	9
GAWLER WEST	2	2
WILLASTON	9	9
5120	924	780
BUCKLAND PARK	36	34
PENFIELD	1	1
RIVERLEA PARK	18	14
VIRGINIA	868	730
WATERLOO CORNER	1	1
5121	575	458
EYRE	88	88
MACDONALD PARK	130	103
PENFIELD	213	161
PENFIELD GARDENS	144	106
5125	35	33
GOLDEN GROVE	30	28
GREENWITH	5	5
5126	6	6
FAIRVIEW PARK	1	1
SURREY DOWNS	5	5
5127	4	4
WYNN VALE	4	4
5131	286	203
HOUGHTON	127	85
LOWER HERMITAGE	75	55
UPPER HERMITAGE	84	63
5132	151	107
PARACOMBE	151	107
5133	112	77
INGLEWOOD	112	77
5134	11	9

Post Code & Suburb	Count of Meters	Count of NMI's
CHERRYVILLE	4	4
MONTACUTE	7	5
5136	188	133
NORTON SUMMIT	188	133
5137	221	149
ASHTON	195	130
MARBLE HILL	25	18
NORTON SUMMIT	1	1
5138	137	100
BASKET RANGE	137	100
5139	127	106
FOREST RANGE	127	106
5141	143	99
ASHTON	1	1
HORSNELL GULLY	7	4
SUMMERTOWN	135	94
5142	85	57
URAILDLA	85	57
5144	7	7
CAREY GULLY	7	7
5150	1	1
LEAWOOD GARDENS	1	1
5151	87	62
CRAFERS	1	1
PICCADILLY	86	61
5152	28	19
CRAFERS	28	19
5153	1503	1079
BIGGS FLAT	1	1
BRADBURY	67	49
CHAPEL HILL	44	32
ECHUNGA	333	243
FLAXLEY	90	62
GREEN HILLS RANGE	44	33
HEATHFIELD	32	20
IRONBANK	7	6
JUPITER CREEK	92	62
LONGWOOD	53	36
MACCLESFIELD	378	299
MYLOR	360	234
SCOTT CREEK	2	2
5154	306	188
ALDGATE	305	187
MYLOR	1	1
5155	366	249
BRIDGEWATER	366	249
5156	48	31
UPPER STURT	48	31
5157	766	560
ASHBOURNE	4	2
BULL CREEK	50	36
CHERRY GARDENS	142	105
CLARENDON	193	146
COROMANDEL EAST	40	26
DORSET VALE	6	4

Post Code & Suburb	Count of Meters	Count of NMI's
KANGARILLA	328	239
MCHARG CREEK	3	2
5158	411	396
HALLETT COVE	392	379
O'HALLORAN HILL	12	10
SHEIDOW PARK	6	6
TROTT PARK	1	1
5159	989	847
ABERFOYLE PARK	24	24
CHANDLERS HILL	64	45
FLAGSTAFF HILL	896	773
HAPPY VALLEY	5	5
5160	74	74
LONSDALE	74	74
5161	21	21
OLD REYNELLA	10	10
REYNELLA	11	11
5162	48	47
MORPHETT VALE	31	31
WOODCROFT	17	16
5163	23	19
HACKHAM	8	8
HUNTFIELD HEIGHTS	1	1
ONKAPARINGA HILLS	14	10
5164	8	7
CHRISTIE DOWNS	8	7
5165	14	14
CHRISTIES BEACH	14	14
5166	1	1
O'SULLIVAN BEACH	1	1
5167	4	4
PORT NOARLUNGA	4	4
5168	33	29
NOARLUNGA CENTRE	19	18
NOARLUNGA DOWNS	10	8
OLD NOARLUNGA	4	3
5169	528	524
MOANA	6	6
SEAFORD	25	24
SEAFORD HEIGHTS	1	1
SEAFORD MEADOWS	289	287
SEAFORD RISE	207	206
5170	222	176
MASLIN BEACH	222	176
5171	1991	1571
BLEWITT SPRINGS	183	135
MCLAREN FLAT	403	315
MCLAREN VALE	1346	1074
TATACHILLA	59	47
5172	1082	828
DINGABLEDINGA	23	21
HOPE FOREST	52	34
KUITPO	40	29
KUITPO COLONY	18	12
KYEEMA	12	8

Post Code & Suburb	Count of Meters	Count of NMI's
MONTARRA	13	9
MOUNT MAGNIFICENT	1	1
THE RANGE	65	51
WHITES VALLEY	134	110
WILLUNGA	580	453
WILLUNGA HILL	31	20
WILLUNGA SOUTH	108	79
YUNDI	5	1
5173	2778	2448
ALDINGA	190	173
ALDINGA BEACH	2135	1927
PORT WILLUNGA	453	348
5174	702	580
ALDINGA BEACH	2	1
SELICKS BEACH	572	471
SELICKS HILL	128	108
5201	688	512
BLACKFELLOWS CREEK	16	11
KUITPO	66	50
MEADOWS	427	321
PARIS CREEK	107	77
PROSPECT HILL	72	53
5202	51	36
HINDMARSH TIERS	31	20
MYPONGA	20	16
5203	106	72
PARAWA	80	55
TORRENS VALE	3	3
TUNKALILLA	22	13
WAITPINGA	1	1
5210	30	22
MOUNT COMPASS	16	13
MOUNT MAGNIFICENT	14	9
5211	3086	2351
BACK VALLEY	19	18
ENCOUNTER BAY	1533	1167
HAYBOROUGH	103	98
HINDMARSH VALLEY	195	151
INMAN VALLEY	2	2
LOWER INMAN VALLEY	97	74
MCCRACKEN	616	452
MOUNT JAGGED	69	49
VICTOR HARBOR	237	184
WAITPINGA	180	133
WILLOW CREEK	35	23
5212	21	19
PORT ELLIOT	21	19
5213	38	32
MIDDLETON	38	32
5214	285	228
CURRENCY CREEK	154	116
GOOLWA	34	32
GOOLWA BEACH	2	2
GOOLWA NORTH	4	4
GOOLWA SOUTH	23	21

Post Code & Suburb	Count of Meters	Count of NMI's
HINDMARSH ISLAND	8	8
MOSQUITO HILL	60	45
5231	338	241
CHAIN OF PONDS	16	11
KERSBROOK	304	214
MILLBROOK	15	14
PARACOMBE	3	2
5232	160	115
CUDLEE CREEK	160	115
5233	566	402
FORRESTON	144	105
GUMERACHA	309	208
KENTON VALLEY	113	89
5234	441	327
BIRDWOOD	441	327
5235	919	713
CROMER	52	39
EDEN VALLEY	143	111
FLAXMAN VALLEY	81	64
MOUNT PLEASANT	401	309
SPRINGTON	242	190
5236	113	87
TUNGKILLO	113	87
5237	17	15
MILENDELLA	6	5
PALMER	10	9
SANDERSTON	1	1
5238	152	127
BIG BEND	1	1
BOWHILL	57	46
CLAYPANS	8	6
COWIRRA	9	8
FORSTER	2	2
NILDOTTIE	59	51
PONDE	2	2
PURNONG	5	4
YOUNGHUSBAND	9	7
5240	224	171
LENSWOOD	221	168
LOBETHAL	2	2
WOODSIDE	1	1
5241	785	595
LOBETHAL	784	594
WOODSIDE	1	1
5242	9	9
BALHANNAH	9	9
5243	9	8
OAKBANK	9	8
5244	1431	1063
CHARLESTON	198	142
HARROGATE	91	71
MOUNT TORRENS	304	208
WOODSIDE	838	642
5245	62	50
HAHNDORF	59	47

Post Code & Suburb	Count of Meters	Count of NMI's
MYLOR	1	1
VERDUN	2	2
5250	14	14
LITTLEHAMPTON	4	4
TOTNESS	10	10
5251	925	747
BUGLE RANGES	77	51
HIGHLAND VALLEY	1	1
MOUNT BARKER	715	602
MOUNT BARKER SPRINGS	23	17
WISTOW	109	76
5252	620	481
BRUKUNGA	117	83
DAWESLEY	66	51
KANMANTOO	136	108
NAIRNE	298	236
ST IVES	3	3
5253	1366	1114
AVOCA DELL	2	2
BRINKLEY	2	2
BURDETT	57	51
CHAPMAN BORE	19	17
ETTRICK	21	18
GIFFORD HILL	1	1
GREENBANKS	5	5
LONG FLAT	48	38
MOBILONG	2	2
MONTEITH	1	1
MURRAWONG	1	1
MURRAY BRIDGE	1106	891
MURRAY BRIDGE EAST	38	31
MURRAY BRIDGE SOUTH	1	1
RIVERGLADES	1	1
RIVERGLEN	1	1
SUNNYSIDE	38	31
TOORA	1	1
WHITE HILL	1	1
WHITE SANDS	3	3
WILLOW BANKS	6	6
WOODS POINT	11	9
5254	170	137
CALLINGTON	127	103
MONARTO SOUTH	6	5
MONTEITH	6	4
PALLAMANA	1	1
PETWOOD	11	9
ROCKLEIGH	19	15
5255	874	702
ANGAS PLAINS	35	27
BELVIDERE	36	26
BLETCHLEY	12	10
FINNISS	4	3
GEMMELLS	1	1
HIGHLAND VALLEY	29	24
LAKE PLAINS	67	60

Post Code & Suburb	Count of Meters	Count of NMI's
LANGHORNE CREEK	298	233
MULGUNDAWA	30	25
RED CREEK	4	2
SANDERGROVE	1	1
STRATHALBYN	336	274
TOOPERANG	18	14
WILLYAROO	2	1
WOODCHESTER	1	1
5256	432	369
ANGAS PLAINS	4	3
CLAYTON BAY	2	1
MILANG	398	339
POINT STURT	2	2
TOLDEROL	26	24
5259	185	159
JERVOIS	4	4
KEPA	32	25
NATURI	18	16
TAILEM BEND	121	105
WELLINGTON	9	8
WELLINGTON EAST	1	1
5260	12	12
TAILEM BEND	12	12
5264	8	7
COORONG	8	7
5273	54	40
AVENUE RANGE	54	40
5275	1361	1075
BLACKFORD	26	19
CAPE JAFFA	58	56
KINGSTON SE	723	547
MOUNT BENSON	1	1
PINKS BEACH	117	101
REEDY CREEK	81	65
ROSETOWN	69	61
SANDY GROVE	50	31
TARATAP	39	35
TILLEY SWAMP	21	18
WANGOLINA	51	44
WEST RANGE	14	13
WYOMI	111	84
5290	842	674
MOUNT GAMBIER	839	672
SUTTONTOWN	1	1
WORROLONG	2	1
5291	841	597
COMPTON	185	124
DISMAL SWAMP	3	3
GLENBURNIE	104	66
MIL-LEL	117	86
MINGBOOL	1	1
MOUNT GAMBIER	2	1
SUTTONTOWN	174	124
WANDILO	79	57
WORROLONG	176	135

Post Code & Suburb	Count of Meters	Count of NMI's
5301	467	375
CARCUMA	7	5
GERANIUM	132	98
JABUK	62	49
MOORLANDS	25	22
NETHERTON	3	2
PARRAKIE	111	91
PEAKE	76	66
SHERLOCK	51	42
5302	512	410
LAMEROO	512	410
5303	161	135
PARILLA	161	135
5304	528	409
KRINGIN	8	7
PEEBINGA	41	35
PINNAROO	479	367
5306	74	57
WYNARKA	74	57
5307	412	329
KAROONDA	302	244
KARTE	43	33
MARAMA	67	52
5308	119	97
COPEVILLE	43	36
GALGA	16	14
MERCUNDA	8	6
PERPONDA	52	41
5309	97	75
BORRIKA	41	34
HALIDON	2	1
SANDALWOOD	54	40
5321	1	1
CADELL	1	1
5322	11	11
QUALCO	7	7
RAMCO	2	2
SUNLANDS	2	2
5330	2	2
WAIKERIE	2	2
5333	31	31
BOOKPURNONG	19	19
LOXTON	7	7
LOXTON NORTH	5	5
5340	517	388
LYRUP	1	1
MUNDIC CREEK	12	10
MURTHO	148	112
PARINGA	304	226
PIKE RIVER	32	23
WONUARRA	20	16
5341	544	425
CALPERUM STATION	10	9
CHAFFEY	109	86
CHOWILLA	1	1

Post Code & Suburb	Count of Meters	Count of NMI's
COOLTONG	98	73
CRESCENT	1	1
OLD CALPERUM	2	2
REMARK	256	193
REMARK NORTH	42	37
REMARK SOUTH	2	2
REMARK WEST	17	16
YAMBA	6	5
5343	1	1
LYRUP	1	1
5351	8	6
MOUNT CRAWFORD	8	6
5353	10	8
EDEN VALLEY	1	1
KEYNETON	9	7
5354	18	16
BAKARA	13	11
SWAN REACH	5	5
5355	10	9
TAUNTON	10	9
5373	55	45
HAMILTON	55	45
5374	167	130
BUCHANAN	11	8
EUDUNDA	26	20
HAMPDEN	33	26
JULIA	18	16
NGAPALA	34	27
POINT PASS	45	33
5381	196	147
BRADY CREEK	9	8
BRIGHT	8	5
EMU DOWNS	20	14
GERANIUM PLAINS	8	7
ROBERTSTOWN	147	109
ROCKY PLAIN	4	4
5412	256	185
RHYNIE	48	36
RIVERTON	196	139
WOOLSHED FLAT	12	10
5413	191	147
APOINGA	11	9
BLACK SPRINGS	3	2
MARRABEL	57	41
SADDLEWORTH	8	5
STEELTON	14	11
TARNMA	23	18
TOTHILL BELT	8	7
TOTHILL CREEK	17	16
WATERLOO	50	38
5415	108	87
MINTARO	97	77
STANLEY	11	10
5416	8	5
FARRELL FLAT	8	5

Post Code & Suburb	Count of Meters	Count of NMI's
5417	16	11
BURRA	15	10
LEIGHTON	1	1
5419	20	15
BELALIE EAST	1	1
CANOWIE	2	2
HALLETT	17	12
5420	84	65
CANOWIE BELT	35	27
WHYTE YARCOWIE	49	38
5421	124	107
FRANKLYN	7	4
TEROWIE	117	103
5422	872	680
HARDY	2	1
OODLA WIRRA	8	8
PARATOO	1	1
PETERBOROUGH	836	650
SUNNYBRAE	13	10
UCOLTA	12	10
5432	19	16
CRADOCK	13	11
HOLOWILIENA SOUTH	2	2
WILLIPPA	4	3
5433	347	275
QUORN	347	275
5434	217	169
BARNDIOOTA	1	1
FLINDERS RANGES	22	17
HAWKER	185	145
KANYAKA	5	4
UPALINNA	2	1
WORUMBA	2	1
5440	9	7
GRAMPUS	1	1
NACKARA	8	6
5451	27	23
AUBURN	14	11
UNDALYA	13	12
5452	37	31
LEASINGHAM	16	12
WATERVALE	21	19
5453	566	450
ARMAGH	12	8
CLARE	291	234
EMU FLAT	11	8
GILLETOWN	28	22
HILL RIVER	38	33
PENWORTHAM	1	1
POLISH HILL RIVER	37	31
SEVENHILL	3	2
SPRING FARM	73	59
SPRING GULLY	1	1
STANLEY FLAT	71	51
5454	2	2

Post Code & Suburb	Count of Meters	Count of NMI's
ANDREWS	1	1
SPALDING	1	1
5461	29	22
BOWILLIA	13	10
EVERARD CENTRAL	12	9
STOW	4	3
5462	33	26
BLYTH	33	26
5464	54	42
ANAMA	2	2
BRINKWORTH	3	3
CONDOWIE	29	22
HART	20	15
5490	34	27
CALTOWIE	12	11
CALTOWIE WEST	22	16
5491	38	29
BELALIE EAST	22	17
BELALIE NORTH	16	12
5493	41	35
YONGALA	41	35
5501	2	2
LEWISTON	2	2
5510	1	1
LOCHIEL	1	1
5520	3	3
BURNSFIELD	1	1
SNOWTOWN	2	2
5540	1644	1483
BUNGAMA	1	1
COONAMIA	4	4
PORT PIRIE	32	30
PORT PIRIE SOUTH	1147	1046
PORT PIRIE WEST	5	5
RISDON PARK	441	383
RISDON PARK SOUTH	3	3
SOLOMONTOWN	11	11
5550	1	1
NANTAWARRA	1	1
5571	16	14
ARDROSSAN	14	12
BLACK POINT	2	2
5573	12	12
MAITLAND	8	8
POINT PEARCE	1	1
PORT VICTORIA	3	3
5575	816	711
CORNY POINT	144	122
COUCH BEACH	5	4
MARION BAY	221	203
MINLATON	4	3
POINT SOUTTAR	49	44
POINT TURTON	247	216
PORT RICKABY	1	1
THE PINES	2	2

Post Code & Suburb	Count of Meters	Count of NMI's
WHITE HUT	8	6
WOOL BAY	135	110
5576	219	177
COOBOWIE	2	1
HONITON	27	19
PORT MOOROWIE	62	59
YORKETOWN	128	98
5577	464	401
COUCH BEACH	7	7
FOUL BAY	79	73
INNESTON	16	15
POINT SOUTTAR	2	2
THE PINES	140	132
WAROOKA	220	172
5580	1	1
CURRAMULKA	1	1
5581	6	5
PORT VINCENT	6	5
5582	257	193
STANSBURY	257	193
5583	541	439
COOBOWIE	174	142
EDITHBURGH	319	253
SULTANA POINT	48	44
5606	582	408
PORT LINCOLN	582	408
5661	14	11
PIMBAACLA	14	11
5680	222	190
CARAWA	4	3
CHINBINGINA	6	4
LAURA BAY	5	4
MUDAMUCKLA	36	30
NUNJIKOMPITA	24	19
PUNTABIE	11	9
SMOKY BAY	136	121
5690	1527	1200
BOOKABIE	17	17
CEDUNA	952	713
CEDUNA WATERS	33	33
CHARRA	28	26
DENIAL BAY	49	41
KALANBI	14	13
KOONIBBA	59	54
MALTEE	14	11
MERGHINY	15	12
MUDAMUCKLA	1	1
NADIA	5	4
PENONG	71	69
THEVENARD	231	173
UWORRA	9	8
WANDANA	20	17
WATRABA	3	2
WHITE WELL CORNER	6	6
5700	1106	726

Post Code & Suburb	Count of Meters	Count of NMI's
CULTANA	1	1
DAVENPORT	4	2
PORT AUGUSTA	53	51
PORT AUGUSTA WEST	1048	672
5710	3	3
HESSO	1	1
STIRLING NORTH	2	2
5713	24	19
KOOTABERRA	13	10
MOUNT ARDEN	2	1
OAKDEN HILLS	9	8
5715	29	15
CARRIEWERLOO	12	5
LINCOLN GAP	1	1
PANDURRA	6	3
WARTAKA	2	1
YUDNAPINNA	8	5
5730	28	26
BELTANA	12	12
BELTANA STATION	4	4
MOOLOOLOO	4	3
NILPENNA	1	1
PUTTAPA	6	5
WARRAWEENA	1	1
5731	223	140
LEIGH CREEK	196	117
LEIGH CREEK STATION	4	4
LYNDHURST	15	11
MOUNT LYNDHURST	4	4
MYRTLE SPRINGS	4	4
5732	127	111
BURR WELL	4	4
COPLEY	79	63
LEIGH CREEK STATION	1	1
MANNERS WELL	2	2
MOUNT SERLE	6	6
NEPABUNNA	35	35
5950	1	1
ADELAIDE AIRPORT	1	1
Grand Total	78290	65553

Year 2		
Post Code & Suburb	Count of Meters	Count of NMI's
5000	1	1
NORTH ADELAIDE	1	1
5006	2125	1992
NORTH ADELAIDE	2125	1992
5009	7	7
KILKENNY	7	7
5010	3	3
ANGLE PARK	2	2
MANSFIELD PARK	1	1
5011	1897	1710
ST CLAIR	237	233
WOODVILLE	678	582
WOODVILLE NORTH	4	3
WOODVILLE PARK	502	437
WOODVILLE WEST	476	455
5012	1871	1702
ATHOL PARK	537	488
MANSFIELD PARK	591	543
WOODVILLE NORTH	743	671
5013	2668	2406
GILLMAN	46	44
OTTOWAY	706	601
PENNINGTON	618	574
ROSEWATER	993	906
WINGFIELD	305	281
5014	3170	2830
ALBERT PARK	383	332
ALBERTON	663	608
CHELTENHAM	617	554
HENDON	393	320
QUEENSTOWN	675	616
ROYAL PARK	438	399
ST CLAIR	1	1
5015	1318	1216
BIRKENHEAD	443	406
GARDEN ISLAND	3	2
NEW PORT	1	1
PORT ADELAIDE	871	807
5016	1447	1278
LARGS BAY	447	403
LARGS NORTH	812	691
PETERHEAD	188	184
5017	1179	1013
OSBORNE	338	299
TAPEROO	841	714
5018	1199	1084
NORTH HAVEN	1194	1079
OUTER HARBOR	5	5
5019	51	48
SEMAPHORE	51	48
5021	1	1
WEST LAKES	1	1
5023	603	530
SEATON	603	530
5041	598	516

Year 2

Post Code & Suburb	Count of Meters	Count of NMI's
COLONEL LIGHT GARDENS	108	100
PANORAMA	490	416
5042	1456	1307
PASADENA	581	521
ST MARYS	875	786
5050	264	186
EDEN HILLS	264	186
5051	1955	1442
BLACKWOOD	740	555
COROMANDEL VALLEY	603	452
CRAIGBURN FARM	16	15
GLENALTA	2	1
HAWTHORNDENE	594	419
5052	556	396
BELAIR	528	377
BLACKWOOD	6	3
GLENALTA	22	16
5062	1316	1119
BROWN HILL CREEK	1	1
CLAPHAM	331	269
KINGSWOOD	455	398
LOWER MITCHAM	210	185
MITCHAM	229	194
NETHERBY	37	28
TORRENS PARK	53	44
5063	534	501
EASTWOOD	270	255
FREWVILLE	263	245
GLENSIDE	1	1
5064	1409	1115
GLEN OSMOND	446	335
GLENUNGA	530	445
LEAWOOD GARDENS	1	1
MOUNT OSMOND	94	56
ST GEORGES	294	235
URRBRAE	44	43
5065	2567	2263
DULWICH	491	446
GLENSIDE	928	884
LINDEN PARK	244	215
TOORAK GARDENS	481	385
TUSMORE	423	333
5066	2587	2019
BEAUMONT	582	440
BURNSIDE	778	609
ERINDALE	234	195
HAZELWOOD PARK	360	291
STONYFELL	223	166
WATTLE PARK	410	318
5067	77	76
ROSE PARK	77	76
5068	1240	976
HEATHPOOL	126	94
KENSINGTON GARDENS	372	250
LEABROOK	539	455

Year 2

Post Code & Suburb	Count of Meters	Count of NMI's
MARRYATVILLE	203	177
5072	299	237
MAGILL	30	24
ROSSLYN PARK	269	213
5081	1	1
MEDINDIE	1	1
5082	2940	2612
FITZROY	193	163
OVINGHAM	55	53
PROSPECT	2645	2363
THORNGATE	47	33
5085	212	192
CLEARVIEW	2	1
ENFIELD	210	191
5086	419	395
GILLES PLAINS	8	8
HILLCREST	344	332
OAKDEN	67	55
5091	432	338
BANKSIA PARK	432	338
5092	1581	1412
MODBURY	214	178
MODBURY HEIGHTS	982	900
MODBURY NORTH	385	334
5094	1	1
DRY CREEK	1	1
5096	1714	1634
GULFVIEW HEIGHTS	623	577
PARA HILLS	1091	1057
5097	986	882
REDWOOD PARK	986	882
5098	300	288
WALKLEY HEIGHTS	300	288
5108	553	468
SALISBURY	549	464
SALISBURY HEIGHTS	4	4
5109	3375	3103
GREENWITH	1	1
SALISBURY EAST	2062	1905
SALISBURY HEIGHTS	758	680
SALISBURY PARK	454	423
SALISBURY PLAIN	100	94
5111	18	18
EDINBURGH	18	18
5112	3003	2064
ELIZABETH	1	1
ELIZABETH GROVE	807	491
ELIZABETH SOUTH	1065	713
ELIZABETH VALE	1107	836
HILLBANK	23	23
5113	766	499
DAVOREN PARK	2	2
ELIZABETH NORTH	764	497
5114	3123	2957
BLAKEVIEW	952	931

Year 2

Post Code & Suburb	Count of Meters	Count of NMI's
CRAIGMORE	1461	1415
SMITHFIELD	335	332
SMITHFIELD PLAINS	375	279
5115	917	909
MUNNO PARA	862	860
MUNNO PARA DOWNS	29	23
MUNNO PARA WEST	26	26
5116	5	4
EVANSTON PARK	5	4
5118	419	301
GAWLER SOUTH	419	301
5125	3516	3314
GOLDEN GROVE	1864	1728
GREENWITH	1652	1586
5126	1188	1059
FAIRVIEW PARK	710	640
SURREY DOWNS	429	383
YATALA VALE	49	36
5127	1357	1288
WYNN VALE	1357	1288
5131	3	2
UPPER HERMITAGE	3	2
5138	20	15
BASKET RANGE	20	15
5141	115	77
SUMMERTOWN	115	77
5142	108	85
URAILDA	108	85
5144	144	105
CAREY GULLY	144	105
5150	29	22
LEAWOOD GARDENS	29	22
5151	68	41
CAREY GULLY	3	1
PICCADILLY	65	40
5152	1879	1225
CLELAND	11	10
CRAFERS	547	337
CRAFERS WEST	313	208
STIRLING	1008	670
5153	632	428
BIGGS FLAT	38	25
BRADBURY	5	3
CHAPEL HILL	14	9
ECHUNGA	41	26
HEATHFIELD	233	153
IRONBANK	102	75
LONGWOOD	14	10
MACCLESFIELD	90	62
MYLOR	19	12
SCOTT CREEK	76	53
5154	530	325
ALDGATE	530	325
5155	634	424
BRIDGEWATER	543	372

Year 2

Post Code & Suburb	Count of Meters	Count of NMI's
MOUNT GEORGE	91	52
5156	250	163
UPPER STURT	250	163
5157	75	49
CHERRY GARDENS	18	13
COROMANDEL EAST	57	36
5158	11	11
O'HALLORAN HILL	4	4
SEAVIEW DOWNS	1	1
TROTT PARK	6	6
5159	393	369
ABERFOYLE PARK	393	369
5160	1	1
LONSDALE	1	1
5161	983	886
OLD REYNELLA	229	218
REYNELLA	754	668
5162	4646	4290
HACKHAM	1	1
MORPHETT VALE	3930	3581
ONKAPARINGA HILLS	1	1
WOODCROFT	714	707
5163	3332	3012
HACKHAM	1077	1007
HACKHAM WEST	986	859
HUNTFIELD HEIGHTS	827	765
ONKAPARINGA HEIGHTS	22	14
ONKAPARINGA HILLS	420	367
5164	360	350
CHRISTIE DOWNS	360	350
5165	584	529
CHRISTIE DOWNS	4	4
CHRISTIES BEACH	580	525
5167	1471	1285
PORT NOARLUNGA	834	727
PORT NOARLUNGA SOUTH	637	558
5168	1224	1121
NOARLUNGA CENTRE	95	93
NOARLUNGA DOWNS	817	771
OLD NOARLUNGA	310	255
SEAFORD MEADOWS	2	2
5169	3183	3025
MOANA	595	532
PORT NOARLUNGA SOUTH	1	1
SEAFORD	1041	981
SEAFORD HEIGHTS	71	71
SEAFORD MEADOWS	490	489
SEAFORD RISE	985	951
5171	1	1
MCLAREN VALE	1	1
5172	75	56
PAGES FLAT	67	49
WILLUNGA SOUTH	8	7
5174	11	10
SELICKS HILL	11	10

Year 2

Post Code & Suburb	Count of Meters	Count of NMI's
5202	363	270
HINDMARSH TIERS	46	30
MYPONGA	282	210
MYPONGA BEACH	35	30
5203	3	2
WATTLE FLAT	3	2
5210	16	12
MOUNT COMPASS	16	12
5211	2695	2083
CHITON	133	104
ENCOUNTER BAY	502	462
HAYBOROUGH	543	402
HINDMARSH VALLEY	13	11
INMAN VALLEY	15	12
MCCRACKEN	57	35
VICTOR HARBOR	1431	1056
WAITPINGA	1	1
5212	822	641
PORT ELLIOT	822	641
5235	1	1
FLAXMAN VALLEY	1	1
5237	121	99
APAMURRA	9	9
MANNUM	1	1
MILENDELLA	28	24
PALMER	53	41
SANDERSTON	30	24
5238	917	808
ANGAS VALLEY	13	12
BOLTO	19	16
BOWHILL	74	67
CAURNAMONT	55	45
COWIRRA	85	69
FIVE MILES	12	12
FORSTER	23	20
FRAHNS	7	7
FRAYVILLE	7	5
JULANKA HOLDINGS	2	2
LAKE CARLET	5	5
MANNUM	52	45
NILDOTTIE	106	97
OLD TEAL FLAT	7	7
PELLARING FLAT	5	5
PONDE	3	3
PORT MANNUM	1	1
PUNTHARI	14	13
PURNONG	50	43
PURNONG LANDING	1	1
TEAL FLAT	24	23
WALKER FLAT	138	123
WONGULLA	47	42
YOUNGHUSBAND	157	135
YOUNGHUSBAND HOLDINGS	10	10
5240	5	3
BALHANNAH	2	1

Year 2

Post Code & Suburb	Count of Meters	Count of NMI's
LENSWOOD	3	2
5242	563	405
BALHANNAH	563	405
5243	316	219
OAKBANK	316	219
5244	10	9
WOODSIDE	10	9
5245	1014	736
HAHNDORF	856	624
PAECHTOWN	57	44
VERDUN	101	68
5250	810	644
BLAKISTON	77	53
LITTLEHAMPTON	661	523
TOTNESS	72	68
5251	3181	2559
BUGLE RANGES	24	19
HIGHLAND VALLEY	1	1
MOUNT BARKER	3086	2488
MOUNT BARKER JUNCTION	9	7
MOUNT BARKER SPRINGS	25	18
MOUNT BARKER SUMMIT	35	25
WISTOW	1	1
5252	760	629
HAY VALLEY	28	17
NAIRNE	730	611
PETWOOD	2	1
5253	1361	1006
AVOCA DELL	21	20
BURDETT	5	3
MURRAY BRIDGE	928	678
MURRAY BRIDGE EAST	224	166
RIVERGLADES	183	139
5254	25	23
CALLINGTON	11	10
MYPOLONGA	3	3
PETWOOD	8	7
WALL FLAT	1	1
WOODLANE	2	2
5255	996	782
BELVIDERE	7	5
BLETCHLEY	24	19
GEMMELLS	19	16
HARTLEY	54	45
HIGHLAND VALLEY	18	14
RED CREEK	15	13
SALEM	4	3
STRATHALBYN	737	568
WILLYAROO	63	48
WOODCHESTER	55	51
5259	308	234
ASHVILLE	25	20
MALINONG	31	23
NARRUNG	204	156
POLTALLOCH	19	16

Year 2

Post Code & Suburb	Count of Meters	Count of NMI's
TAILEM BEND	2	1
WELLINGTON EAST	27	18
5260	31	24
ELWOMPLE	25	21
TAILEM BEND	6	3
5261	251	201
COOKE PLAINS	38	30
COOMANDOOK	80	63
CULBURRA	28	23
KI KI	51	42
MALINONG	1	1
YUMALI	53	42
5262	72	56
HYNAM	68	53
KYBYBOLITE	4	3
5263	160	132
COONAWARRA	160	132
5264	835	623
COORONG	88	68
MENINGIE	618	458
MENINGIE EAST	26	17
MENINGIE WEST	28	19
SALT CREEK	41	32
WALTOWA	34	29
5265	356	271
COONALPYN	280	214
FIELD	76	57
5266	87	65
COLEBATCH	26	18
TINTINARA	61	47
5267	116	93
BRIMBAGO	2	2
MCCALLUM	26	23
SHAUGH	38	29
SHERWOOD	28	22
WIRREGA	22	17
5268	1195	876
BORDERTOWN	1052	763
BORDERTOWN SOUTH	3	3
CANNAWIGARA	40	29
LOWAN VALE	29	25
SENIOR	71	56
5269	3	3
WOLSELEY	3	3
5270	314	248
BUCKINGHAM	22	19
MUNDULLA	219	168
MUNDULLA WEST	62	50
SWEDE FLAT	11	11
5271	1965	1428
BOOL LAGOON	61	48
JOANNA	60	52
KOPPAMURRA	47	36
MOUNT LIGHT	65	49
MOYHALL	53	46

Year 2

Post Code & Suburb	Count of Meters	Count of NMI's
NARACOORTE	1481	1041
SPENCE	43	34
STEWART RANGE	47	36
STRUAN	16	14
WILD DOG VALLEY	51	43
WRATTONBULLY	41	29
5272	232	172
COLES	7	4
LUCINDALE	225	168
5277	771	589
COMAUM	9	7
COONAWARRA	1	1
GLENROY	49	42
MAAOUPE	51	35
PENOLA	661	504
5278	1	1
MOERLONG	1	1
5290	3032	2456
MOUNT GAMBIER	3032	2456
5291	21	19
ALLENDALE EAST	2	2
EIGHT MILE CREEK	6	4
MOORAK	2	2
PORT MACDONNELL	3	3
SUTTONTOWN	7	7
YAHL	1	1
5301	107	84
CARCUMA	3	3
MOORLANDS	12	8
NETHERTON	31	25
PEAKE	27	22
SHERLOCK	34	26
5302	4	4
NGARKAT	4	4
5309	4	4
HALIDON	1	1
MINDARIE	3	3
5310	1	1
WANBI	1	1
5311	4	4
ALAWOONA	1	1
BUGLE HUT	2	2
PARUNA	1	1
5331	2	2
KINGSTON ON MURRAY	2	2
5332	7	5
MOOROOK	2	2
MOOROOK SOUTH	3	2
YINKANIE	2	1
5333	46	42
BOOKPURNONG	2	2
LOXTON	21	21
LOXTON NORTH	8	6
NEW RESIDENCE	14	12
PYAP	1	1

Year 2

Post Code & Suburb	Count of Meters	Count of NMI's
5340	131	102
MURTHO	2	2
PARINGA	102	79
PIKE RIVER	19	15
WONUARRA	8	6
5341	1482	1112
REMARK	1482	1112
5342	127	95
MONASH	127	95
5343	1140	851
BERRI	911	680
GURRA GURRA	30	24
LYRUP	199	147
5345	2	2
LOVEDAY	2	2
5346	6	6
COBDOGLA	6	6
5352	1482	1108
BETHANY	17	13
ROWLAND FLAT	1	1
STONE WELL	7	7
TANUNDA	1408	1047
VINE VALE	49	40
5353	465	398
ANGASTON	24	21
BLACK HILL	34	32
CAMBRAI	186	155
KEYNETON	2	1
LANGS LANDING	15	14
PUNYELROO	55	50
SEDAN	99	81
SUNNYDALE	30	27
TOWITTA	20	17
5354	170	151
FISHER	4	3
LANGS LANDING	5	5
MARKS LANDING	15	15
PUNYELROO	1	1
SWAN REACH	145	127
5355	53	47
LIGHT PASS	1	1
MARANANGA	1	1
NURIOOTPA	47	41
STOCKWELL	4	4
5356	33	28
SANDLETON	13	13
TRURO	20	15
5360	2	2
GREENOCK	2	2
5373	2	2
BETHEL	2	2
5381	3	2
EMU DOWNS	3	2
5401	344	253
ALMA	41	32

Year 2

Post Code & Suburb	Count of Meters	Count of NMI's
HAMLEY BRIDGE	268	191
SALTER SPRINGS	35	30
5410	90	66
STOCKPORT	90	66
5411	127	95
GILES CORNER	14	10
TARLEE	113	85
5413	29	23
APOINGA	3	2
BLACK SPRINGS	24	20
WATERLOO	2	1
5414	46	39
MANOORA	46	39
5415	5	4
MINTARO	2	2
STANLEY	3	2
5416	93	69
FARRELL FLAT	86	65
PORTER LAGOON	7	4
5417	402	296
BURRA	382	280
GUM CREEK	1	1
HANSON	9	8
KOONOONA	10	7
5422	110	83
CAVENAGH	3	3
DAWSON	5	4
ERSKINE	4	4
MANNANARIE	51	36
MINVALARA	22	17
PETERBOROUGH	5	3
SUNNYBRAE	11	7
YALPARA	3	3
YATINA	6	6
5431	489	388
AMYTON	2	2
BLACK ROCK	8	6
COOMOOROO	22	16
EURELIA	16	11
HAMMOND	18	15
JOHNBURGH	8	7
MORCHARD	5	5
ORROROO	247	200
PEKINA	84	63
TARCOWIE	42	33
WALLOWAY	10	8
WILLOWIE	25	20
YALPARA	2	2
5432	87	72
BELTON	31	25
CARRIETON	43	36
CRADOCK	4	3
MOOCKRA	8	7
YANYARRIE	1	1
5433	153	138

Year 2

Post Code & Suburb	Count of Meters	Count of NMI's
BRUCE	7	6
QUORN	111	101
SALTIA	4	3
STEPHENSTON	3	3
WILLOCHRA	12	11
YARRAH	16	14
5434	7	6
BARNDIOOTA	1	1
KANYAKA	6	5
5451	207	161
AUBURN	207	161
5452	167	133
LEASINGHAM	47	42
WATERVALE	120	91
5453	1231	908
ARMAGH	105	80
BARINIA	25	19
BENBOURNIE	8	6
BOCONNOC PARK	3	3
CLARE	799	573
EMU FLAT	24	20
GILLETOWN	10	10
HILL RIVER	17	14
PENWORTHAM	65	48
SEVENHILL	69	49
SPRING GULLY	23	21
STANLEY FLAT	83	65
5454	4	3
ANDREWS	4	3
5455	36	26
HILLTOWN	36	26
5460	233	183
BARABBA	2	2
OWEN	183	141
PINERY	39	33
STOCKYARD CREEK	9	7
5461	399	307
BALAKLAVA	370	283
DALKEY	3	2
ERITH	24	20
HOSKIN CORNER	2	2
5464	34	23
ANAMA	8	6
BUNGAREE	26	17
5480	6	4
APPILA	6	4
5481	2	2
WIRRABARA	2	2
5482	113	84
BOOLEROO CENTRE	113	84
5483	15	14
MELROSE	15	14
5485	210	155
WILMINGTON	210	155
5490	1	1

Year 2		
Post Code & Suburb	Count of Meters	Count of NMI's
CALTOWIE	1	1
5491	516	370
BELALIE NORTH	24	20
BUNDALEER NORTH	8	7
HORNSDALE	1	1
JAMESTOWN	483	342
5493	4	3
YONGALA	4	3
5495	8	6
NECTAR BROOK	8	6
5502	4	3
GRACE PLAINS	4	3
5540	1866	1688
PORT PIRIE	3	3
PORT PIRIE SOUTH	178	156
PORT PIRIE WEST	813	741
RISDON PARK	419	359
RISDON PARK SOUTH	453	429
5552	134	100
KAINTON	9	6
KULPARA	7	5
MELTON	8	6
PASKEVILLE	103	77
SUNNYVALE	1	1
THRINGTON	6	5
5554	8	6
BOORS PLAIN	3	2
CUNLIFFE	5	4
5555	6	5
MELTON	6	5
5556	1	1
WARBURTO	1	1
5558	1234	1038
CROSS ROADS	45	42
EAST MOONTA	57	45
HAMLEY	13	11
KOOROONA	9	8
MOONTA	375	297
MOONTA BAY	247	217
MOONTA MINES	61	51
NORTH MOONTA	168	150
PARAMATTA	4	3
PORT HUGHES	245	205
YELTA	10	9
5575	878	696
BLUFF BEACH	29	25
BRENTWOOD	45	34
HARDWICKE BAY	153	135
KOOLYWURTIE	14	12
MINLATON	500	375
PARSONS BEACH	35	31
PORT RICKABY	41	36
RAMSAY	61	48
5576	380	278
YORKETOWN	380	278

Year 2

Post Code & Suburb	Count of Meters	Count of NMI's
5577	3	3
WAROOKA	3	3
5580	100	68
CURRAMULKA	100	68
5581	441	341
PORT VINCENT	441	341
5582	94	81
STANSBURY	94	81
5600	46	42
WHYALLA	32	29
WHYALLA PLAYFORD	14	13
5601	2	2
WHYALLA BARSON	2	2
5603	9	7
ARNO BAY	9	7
5606	693	596
KIANA	8	6
PORT LINCOLN	685	590
5607	924	763
BOSTON	108	87
COOMUNGA	9	8
COULTA	56	43
DUCK PONDS	38	31
FARM BEACH	9	7
GREEN PATCH	23	18
HAWSON	8	6
KELLIDIE BAY	16	15
KIANA	3	2
LINCOLN NATIONAL PARK	1	1
LITTLE DOUGLAS	13	13
LOUTH BAY	43	30
MITCHELL	39	30
MOUNT DRUMMOND	23	16
MOUNT DUTTON BAY	36	34
MOUNT HOPE	44	38
MURDINGA	71	53
NORTH SHIELDS	76	63
PEARLAH	5	4
POONINDIE	5	4
SHERINGA	26	23
TIATUKIA	52	41
TOOLIGIE	45	37
TOOTENILLA	5	4
TULKA	35	34
ULEY	6	6
VENUS BAY	75	64
WANGARY	42	39
WANILLA	11	11
YALLUNDA FLAT	1	1
5608	1265	919
MULLAQUANA	2	1
WHYALLA NORRIE	853	604
WHYALLA STUART	410	314
5609	1	1
WHYALLA JENKINS	1	1

Year 2

Post Code & Suburb	Count of Meters	Count of NMI's
5630	38	29
EDILLILIE	38	29
5631	446	329
COCKALEECHIE	36	28
CUMMINS	410	301
5632	84	65
KAPINNIE	38	29
KARKOO	15	12
MITCHELL	6	6
YEELANNA	25	18
5633	299	214
BOONERDO	14	11
LOCK	266	184
ULYERRA	19	19
5640	130	99
CAMPOONA	38	29
CLEVE	64	51
JAMIESON	3	2
WADDIKEE	25	17
5641	1	1
PINKAWILLINIE	1	1
5642	271	196
DARKE PEAK	97	63
KIELPA	69	50
MURLONG	26	20
RUDALL	79	63
5650	144	108
COOTRA	6	4
KOONGAWA	49	36
WARRAMBOO	89	68
5651	55	49
KYANCUTTA	55	49
5652	409	314
PYGERY	22	19
WUDINNA	387	295
5653	72	57
YANINEE	72	57
5654	226	174
COCATA	15	12
KARCULTABY	21	15
MINNIPA	158	120
MOUNT DAMPER	32	27
5655	93	68
GAWLER RANGES	1	1
KALDOONERA	20	15
POOCHERA	47	37
PYGERY	25	15
5660	39	30
CHILPENUNDA	15	10
CUNGENA	24	20
5661	100	80
KOOLGERA	1	1
PIMBAACLA	4	3
WALLALA	7	6
WIRRULLA	72	59

Year 2

Post Code & Suburb	Count of Meters	Count of NMI's
YANTANABIE	16	11
5670	326	259
BRAMFIELD	26	22
COLTON	23	18
COOLILLIE	13	11
ELLISTON	197	154
KAPPAWANTA	1	1
MOUNT JOY	2	2
MOUNT WEDGE	23	20
PALKAGEE	14	11
POLDA	7	6
TALIA	20	14
5671	177	148
BAIRD BAY	13	12
CALCA	15	12
COLLEY	42	37
MORTANA	24	18
MOUNT COOPER	6	5
PORT KENNY	46	41
SCEALE BAY	3	1
TYRINGA	18	14
WITERA	10	8
5680	900	739
CHANDADA	26	20
HASLAM	40	31
INKSTER	15	11
MARYVALE	18	16
NUNJIKOMPITA	3	3
PERLUBIE	15	13
PETINA	27	22
PIEDNIPPIE	27	23
SCEALE BAY	52	48
STREAKY BAY	677	552
5700	855	598
DAVENPORT	35	29
MOUNT ARDEN	1	1
MUNDALLIO	3	2
PORT AUGUSTA	432	293
PORT AUGUSTA WEST	377	267
WAMI KATA	7	6
5701	4	3
WOOLUNDUNGA	4	3
5713	5	5
EMEROO	1	1
YADLAMALKA	4	4
Grand Total	126919	106212

Year 3

Post Code & Suburb	Count of Meters	Count of NMI's
5000	5726	5363
ADELAIDE	5726	5363
5006	1025	933
NORTH ADELAIDE	1025	933
5007	998	954
BROMPTON	5	5
HINDMARSH	222	216
WELLAND	332	322
WEST HINDMARSH	439	411
5009	1100	1009
ALLENBY GARDENS	532	492
BEVERLEY	565	514
WELLAND	3	3
5011	932	809
WOODVILLE SOUTH	542	472
WOODVILLE WEST	390	337
5014	721	645
ALBERT PARK	147	133
ROYAL PARK	574	512
5019	1	1
SEMAPHORE PARK	1	1
5021	1179	1015
WEST LAKES	1179	1015
5022	4039	3563
GRANGE	1761	1527
HENLEY BEACH	1865	1682
HENLEY BEACH SOUTH	81	68
TENNYSON	332	286
5023	4446	3915
FINDON	1905	1699
SEATON	2541	2216
5024	1462	1288
FULHAM	2	2
FULHAM GARDENS	1460	1286
5025	1425	1270
FLINDERS PARK	852	742
KIDMAN PARK	573	528
5034	2181	1965
CLARENCE PARK	570	502
FORESTVILLE	1	1
GOODWOOD	875	817
KINGS PARK	179	158
MILLSWOOD	383	319
WAYVILLE	173	168
5035	727	649
BLACK FOREST	629	561
FORESTVILLE	97	87
KESWICK	1	1
5037	957	847
GLANDORE	525	432
KURRALTA PARK	432	415
5038	2240	1966
PLYMPTON	1	1
PLYMPTON PARK	965	846
SOUTH PLYMPTON	1274	1119

Year 3

Post Code & Suburb	Count of Meters	Count of NMI's
5039	1657	1421
CLARENCE GARDENS	226	201
EDWARDSTOWN	1431	1220
5041	126	113
CUMBERLAND PARK	126	113
5042	1331	1180
BEDFORD PARK	324	289
CLOVELLY PARK	708	619
PASADENA	153	139
TONSLEY	146	133
5043	4859	4476
ASCOT PARK	1192	1100
MARION	579	505
MITCHELL PARK	1578	1464
MORPHETTVILLE	627	565
PARK HOLME	883	842
5044	167	143
GLENGOWRIE	113	99
SOMERTON PARK	54	44
5045	1541	1412
GLENELG	196	196
GLENELG NORTH	1345	1216
5046	229	207
OAKLANDS PARK	229	207
5047	179	152
DARLINGTON	135	109
SEACOMBE GARDENS	44	43
5050	954	721
BELLEVUE HEIGHTS	570	431
EDEN HILLS	384	290
5051	642	554
BLACKWOOD	186	125
COROMANDEL VALLEY	29	24
CRAIGBURN FARM	427	405
5052	239	167
BELAIR	237	166
BLACKWOOD	2	1
5061	1171	1007
HYDE PARK	181	156
MALVERN	235	200
PARKSIDE	3	3
UNLEY	392	368
UNLEY PARK	360	280
5062	555	433
KINGSWOOD	162	144
MITCHAM	9	7
NETHERBY	294	223
SPRINGFIELD	83	52
TORRENS PARK	7	7
5063	1351	1277
EASTWOOD	111	111
FULLARTON	15	14
HIGHGATE	142	131
PARKSIDE	1083	1021
5064	165	120

Year 3

Post Code & Suburb	Count of Meters	Count of NMI's
URRBRAE	165	120
5069	2721	2397
COLLEGE PARK	207	179
EVANDALE	420	384
HACKNEY	260	216
MAYLANDS	526	447
PAYNEHAM	1	1
ST PETERS	893	792
STEPNEY	414	378
5070	3656	3256
FELIXSTOW	669	577
FIRLE	267	251
GLYNDE	726	651
JOSLIN	253	216
MARDEN	880	796
PAYNEHAM	487	439
PAYNEHAM SOUTH	52	48
ROYSTON PARK	322	278
5073	1087	954
HECTORVILLE	1087	954
5074	2137	1893
CAMPBELLTOWN	2137	1893
5075	515	422
PARADISE	515	422
5082	1355	1252
KILBURN	1	1
OVINGHAM	38	38
PROSPECT	1316	1213
5083	641	585
BROADVIEW	641	585
5084	1319	1187
BLAIR ATHOL	1228	1103
KILBURN	91	84
5085	2400	2235
CLEARVIEW	411	361
ENFIELD	639	591
LIGHTSVIEW	375	372
NORTHFIELD	907	844
NORTHGATE	68	67
5086	694	656
GREENACRES	694	656
5092	731	700
MODBURY	141	140
MODBURY HEIGHTS	226	209
MODBURY NORTH	364	351
5093	1939	1734
PARA VISTA	718	656
VALLEY VIEW	1221	1078
5094	132	129
GEPPS CROSS	132	129
5095	1685	1563
POORAKA	1685	1563
5096	957	854
PARA HILLS	69	67
PARA HILLS WEST	888	787

Year 3

Post Code & Suburb	Count of Meters	Count of NMI's
5098	1826	1574
INGLE FARM	1826	1574
5107	679	655
PARAFIELD GARDENS	679	655
5108	4822	4380
PARALOWIE	2929	2734
SALISBURY NORTH	1893	1646
5110	1198	1167
BOLIVAR	2	2
BURTON	1039	1013
DIREK	157	152
5112	2600	2111
ELIZABETH	491	387
ELIZABETH EAST	1296	960
ELIZABETH NORTH	3	3
HILLBANK	810	761
5113	2882	2045
ELIZABETH	2	1
ELIZABETH DOWNS	1364	941
ELIZABETH NORTH	487	332
ELIZABETH PARK	1029	771
5114	290	266
SMITHFIELD PLAINS	290	266
5157	122	90
ASHBOURNE	97	71
BULL CREEK	4	3
MCHARG CREEK	21	16
5158	452	405
HAPPY VALLEY	2	2
O'HALLORAN HILL	450	403
5159	4485	4106
ABERFOYLE PARK	1586	1453
CHANDLERS HILL	72	67
FLAGSTAFF HILL	691	624
HAPPY VALLEY	2136	1962
5161	997	901
OLD REYNELLA	504	467
REYNELLA EAST	493	434
5162	2058	1958
MORPHETT VALE	743	679
WOODCROFT	1315	1279
5163	35	26
ONKAPARINGA HILLS	35	26
5172	152	118
HOPE FOREST	19	12
KYEEMA	6	5
PAGES FLAT	10	9
WILLUNGA HILL	28	20
WILLUNGA SOUTH	14	12
YUNDI	75	60
5201	1	1
PARIS CREEK	1	1
5202	4	3
MYPONGA	4	3
5203	396	307

Year 3

Post Code & Suburb	Count of Meters	Count of NMI's
BALD HILLS	14	9
PARAWA	2	2
TORRENS VALE	38	24
WATTLE FLAT	48	34
YANKALILLA	294	238
5204	323	288
CARRICKALINGA	67	53
HAY FLAT	21	19
NORMANVILLE	235	216
5210	451	356
MOUNT COMPASS	363	288
MOUNT MAGNIFICENT	4	4
NANGKITA	84	64
5211	957	750
BACK VALLEY	75	59
CHITON	7	5
HAYBOROUGH	47	47
HINDMARSH VALLEY	65	56
INMAN VALLEY	161	117
LOWER INMAN VALLEY	37	28
MOUNT JAGGED	13	8
PORT ELLIOT	1	1
VICTOR HARBOR	551	429
5212	262	212
PORT ELLIOT	262	212
5213	660	504
MIDDLETON	660	504
5214	514	424
GOOLWA BEACH	503	415
MIDDLETON	11	9
5220	82	59
PARNDANA	82	59
5221	172	147
AMERICAN RIVER	149	127
BALLAST HEAD	10	8
MUSTON	13	12
5222	405	348
AMERICAN BEACH	2	2
ANTECHAMBER BAY	8	5
BAUDIN BEACH	49	45
BROWN BEACH	7	4
CUTTLEFISH BAY	3	3
DUDLEY EAST	33	29
DUDLEY WEST	10	8
IRONSTONE	7	7
ISLAND BEACH	69	62
KANGAROO HEAD	11	9
PELICAN LAGOON	13	11
PENNESHAW	169	140
PORKY FLAT	8	7
SAPPHIRETOWN	9	9
WILLOUGHBY	7	7
5223	1758	1429
BAY OF SHOALS	8	8
BIRCHMORE	15	12

Year 3

Post Code & Suburb	Count of Meters	Count of NMI's
BROWNLOW KI	99	86
CAPE BORDA	13	12
CASSINI	50	40
CYGNET RIVER	35	31
DE MOLE RIVER	7	6
DUNCAN	19	16
EMU BAY	70	59
FLINDERS CHASE	5	5
GOSSE	12	11
HAINES	57	48
KARATTA	14	12
KINGSCOTE	835	661
KOHINOOR	24	20
MACGILLIVRAY	47	37
MENZIES	55	41
MIDDLE RIVER	27	21
NEPEAN BAY	41	37
NEWLAND	45	32
NORTH CAPE	7	7
SEAL BAY	3	3
SEDDON	71	54
STOKES BAY	26	22
STUN'SAIL BOOM	6	5
VIVONNE BAY	89	76
WESTERN RIVER	18	15
WISANGER	60	52
5235	35	28
EDEN VALLEY	1	1
FLAXMAN VALLEY	34	27
5238	1138	885
CALOOTE	1	1
COWIRRA	4	3
MANNUM	929	726
POMPOOTA	68	52
PONDE	40	29
PORT MANNUM	94	72
WALL FLAT	2	2
5253	937	719
BRINKLEY	59	48
BURDETT	1	1
GIFFORD HILL	22	17
MOBILONG	6	6
MONTEITH	13	10
MURRAWONG	38	30
MURRAY BRIDGE	413	312
MURRAY BRIDGE EAST	106	83
MURRAY BRIDGE NORTH	2	1
MURRAY BRIDGE SOUTH	29	25
MYPOLONGA	1	1
NORTHERN HEIGHTS	52	37
RIVERGLEN	15	11
SUNNYSIDE	15	14
SWANPORT	43	30
TOORA	25	20
WHITE SANDS	13	11

Year 3

Post Code & Suburb	Count of Meters	Count of NMI's
WOODS POINT	84	62
5254	445	355
CALOOTE	57	52
MONTEITH	55	41
MYPOLONGA	219	173
WALL FLAT	35	27
WOODLANE	50	36
ZADOWS LANDING	29	26
5255	921	717
FINNISS	2	2
LANGHORNE CREEK	4	4
MOUNT OBSERVATION	1	1
NALPA	1	1
STRATHALBYN	797	622
TOOPERANG	116	87
5259	870	660
JERVOIS	179	124
TAILEM BEND	467	357
WELLINGTON	129	95
WELLINGTON EAST	95	84
5260	121	105
TAILEM BEND	121	105
5261	10	9
CULBURRA	10	9
5262	330	260
BINNUM	69	57
FRANCES	94	74
HYNAM	69	51
KYBYBOLITE	98	78
5263	11	9
COONAWARRA	11	9
5266	371	282
BUNBURY	8	5
COLEBATCH	56	40
DEEPWATER	33	25
TINTINARA	274	212
5267	1122	898
BRIMBAGO	41	32
COOMBE	69	62
KEITH	699	547
LAFFER	30	25
MAKIN	24	17
MCCALLUM	12	9
MOUNT CHARLES	33	29
PETHERICK	35	28
SHERWOOD	41	34
WILLALOOKA	125	105
WIRREGA	13	10
5268	83	69
BANGHAM	2	2
BORDERTOWN	6	6
CANNAWIGARA	72	58
WESTERN FLAT	3	3
5270	24	21
BUCKINGHAM	2	2

Year 3

Post Code & Suburb	Count of Meters	Count of NMI's
CAREW	13	12
KONGAL	2	2
MUNDULLA	7	5
5271	1370	1041
CADGEE	27	24
JOANNA	45	36
KEILIRA	1	1
KEPPOCH	70	55
KOPPAMURRA	31	26
LAURIE PARK	16	11
LOCHABER	102	78
MARCOLLAT	6	6
MOUNT LIGHT	17	14
MOYHALL	1	1
NARACORTE	810	595
PADTHAWAY	129	107
STEWART RANGE	14	12
STRUAN	18	14
THE GAP	28	19
WILD DOG VALLEY	27	22
WOOLUMBOOL	10	6
WRATTONBULLY	18	14
5272	295	230
COLES	31	26
CONMURRA	6	5
FOX	26	17
KEILIRA	2	2
LUCINDALE	165	128
WOOLUMBOOL	65	52
5273	53	44
AVENUE RANGE	53	44
5275	58	47
BLACKFORD	14	12
KEILIRA	32	26
TARATAP	1	1
TILLEY SWAMP	11	8
5277	86	67
COMAUM	35	26
GLENROY	39	32
MAAOUPE	12	9
5290	2818	2247
MOUNT GAMBIER	2818	2247
5291	1487	1161
ALLENDAL E EAST	149	102
BLACKFELLOWS CAVES	59	51
CAPE DOUGLAS	47	44
CAROLINE	2	2
CARPENTER ROCKS	64	53
CAVETON	13	10
COMPTON	1	1
DONOVANS	102	94
EIGHT MILE CREEK	113	77
GLENBURNIE	5	5
KONGORONG	89	73
MOORAK	3	2

Year 3

Post Code & Suburb	Count of Meters	Count of NMI's
MOUNT GAMBIER	3	3
MOUNT SCHANK	153	113
NENE VALLEY	46	42
OB FLAT	2	2
PELICAN POINT	75	63
PORT MACDONNELL	459	342
RACECOURSE BAY	21	16
SUTTONTOWN	23	21
WORROLONG	3	2
WYE	48	36
YAHL	7	7
5320	12	10
BEATTY	2	2
BUNDEY	3	2
MAUDE	7	6
5331	174	124
KINGSTON ON MURRAY	174	124
5332	163	127
MOOROOK	91	68
MOOROOK SOUTH	69	57
YINKANIE	3	2
5333	6	6
BOOKPURNONG	5	5
NEW RESIDENCE	1	1
5341	1258	969
COOLTONG	100	74
CRESCENT	69	54
OLD CALPERUM	46	43
RENMARK	88	72
RENMARK NORTH	241	191
RENMARK SOUTH	169	123
RENMARK WEST	545	412
5342	146	114
MONASH	146	114
5343	318	251
BERRI	46	40
GERARD	34	28
GLOSSOP	1	1
GURRA GURRA	3	3
LYRUP	11	11
WINKIE	223	168
5344	157	124
GLOSSOP	157	124
5345	403	311
BARMERA	399	307
LOVEDAY	2	2
SPECTACLE LAKE	2	2
5350	13	10
SANDY CREEK	13	10
5351	1464	1150
ALTONA	54	43
BAROSSA GOLDFIELDS	11	10
COCKATOO VALLEY	75	53
LYNDOCH	594	463
MOUNT CRAWFORD	37	30

Year 3

Post Code & Suburb	Count of Meters	Count of NMI's
PEWSEY VALE	29	27
WILLIAMSTOWN	664	524
5352	305	240
BETHANY	59	45
GOMERSAL	24	21
KRONDORF	39	32
ROWLAND FLAT	85	71
TANUNDA	98	71
5353	127	98
ANGASTON	5	3
MOCULTA	94	73
PENRICE	28	22
5355	566	461
DAVEYSTON	10	8
EBENEZER	79	65
LIGHT PASS	9	6
MOPPA	8	7
NAIN	3	2
NURIOOTPA	360	296
SEPPELTSFIELD	14	13
STOCKWELL	83	64
5356	286	232
ANNADALE	4	3
DUTTON	42	36
DUTTON EAST	8	8
ST KITTS	26	21
STEINFELD	26	20
TRURO	180	144
5360	4	4
GREENOCK	4	4
5372	11	8
FREELING	11	8
5373	6	4
KOONUNGA	6	4
5374	17	15
BOWER	2	2
FRANKTON	15	13
5381	26	22
BRIGHT	9	8
HALLELUJAH HILLS	4	3
WORLDS END	13	11
5417	424	316
BALAH	3	2
BALDINA	5	5
BOOBOROWIE	126	92
BURRA	184	131
BURRA EASTERN DISTRICTS	4	3
GUM CREEK	14	11
HANSON	10	7
LEIGHTON	38	31
MONGOLATA	6	5
NORTH BOOBOROWIE	22	19
WARNES	12	10
5418	103	82
COLLINSVILLE	12	9

Year 3

Post Code & Suburb	Count of Meters	Count of NMI's
MOUNT BRYAN	91	73
5419	204	158
CANOWIE	1	1
HALLETT	117	89
MOUNT BRYAN EAST	23	19
PINE CREEK	10	7
WILLALO	48	39
WONNA	5	3
5453	161	115
CLARE	154	108
HOYLETON	7	7
5454	76	57
ANDREWS	1	1
HACKLINS CORNER	21	14
MAYFIELD	12	9
SPALDING	16	13
WASHPOOL	26	20
5461	484	354
BALAKLAVA	327	233
ERITH	5	3
GOYDER	19	13
HALBURY	86	68
MOUNT TEMPLETON	22	16
SAINTS	1	1
STOW	2	2
WATCHMAN	13	10
WHITWARTA	9	8
5462	138	98
BLYTH	138	98
5464	4	3
KOOLUNGA	4	3
5470	8	4
YACKA	8	4
5471	68	48
GULNARE	68	48
5472	14	11
GEORGETOWN	14	11
5473	368	267
GLADSTONE	368	267
5480	99	75
APPILA	65	51
CALTOWIE WEST	2	1
LAURA	26	19
STONE HUT	6	4
5481	18	16
APPILA	1	1
WIRRABARA	17	15
5490	62	45
CALTOWIE	44	31
CALTOWIE NORTH	6	6
CALTOWIE WEST	12	8
5491	223	171
BELALIE EAST	21	17
BELALIE NORTH	12	9
BUNDALEER GARDENS	11	9

Year 3

Post Code & Suburb	Count of Meters	Count of NMI's
BUNDALEER NORTH	37	29
HORNSDALE	24	17
JAMESTOWN	112	85
WEST BUNDALEER	6	5
5501	50	40
AVON	35	27
LONG PLAINS	7	7
WILD HORSE PLAINS	8	6
5520	25	18
WOKURNA	25	18
5522	749	647
FISHERMAN BAY	226	214
PORT BROUGHTON	502	415
WARD HILL	21	18
5523	48	31
BEETALOO VALLEY	37	24
CLEMENTS GAP	3	2
HUDDLESTON	8	5
5540	1345	1184
BUNGAMA	2	2
COONAMIA	2	2
NAPPERBY	198	150
NELSHABY	49	44
PIRIE EAST	13	12
PORT PIRIE	10	10
PORT PIRIE SOUTH	32	25
RISDON PARK	341	311
RISDON PARK SOUTH	180	158
SOLOMONTOWN	487	448
TELOWIE	17	13
WARNERTOWN	14	9
5550	384	301
BEAUFORT	11	10
BOWMANS	45	35
INKERMAN	18	15
KALLORA	18	14
NANTAWARRA	21	17
PORT WAKEFIELD	270	209
PROOF RANGE	1	1
5552	1	1
PASKEVILLE	1	1
5554	450	362
BOORS PLAIN	14	9
JERICO	13	11
JERUSALEM	108	87
KADINA	180	137
MATTA FLAT	35	33
NEW TOWN	5	4
WALLAROO MINES	95	81
5555	92	69
ALFORD	1	1
DOWLINGVILLE	3	2
MUNDOORA	88	66
5556	1144	951
NORTH BEACH	313	261

Year 3

Post Code & Suburb	Count of Meters	Count of NMI's
WALLAROO	824	686
WARBURTO	7	4
5558	827	661
AGERY	29	22
EAST MOONTA	3	3
KOOROONA	1	1
MOONTA	11	10
MOONTA BAY	649	523
MOONTA MINES	1	1
NALYAPPA	6	5
NORTH MOONTA	2	2
PARAMATTA	3	2
PORT HUGHES	122	92
5560	4	4
BUTE	4	4
5570	6	5
CLINTON	2	2
PRICE	4	3
5571	576	492
ARDROSSAN	11	6
BLACK POINT	129	110
CUNNINGHAM	36	28
JAMES WELL	88	82
PETERSVILLE	2	2
PINE POINT	82	74
ROGUES POINT	36	35
SANDILANDS	82	55
TIDDY WIDDY BEACH	110	100
5572	2	2
ARTHURTON	2	2
5573	673	500
MAITLAND	522	387
POINT PEARCE	5	3
SOUTH KILKERRAN	37	29
URANIA	34	23
WAURALTEE	24	20
WEETULTA	18	14
YORKE VALLEY	33	24
5575	100	92
KOOLYWURTIE	15	10
PORT JULIA	85	82
5580	36	26
CURRAMULKA	30	21
PORT JULIA	6	5
5581	46	40
PORT VINCENT	3	2
SHEAOAK FLAT	43	38
5600	1354	1185
WHYALLA	1238	1087
WHYALLA PLAYFORD	116	98
5601	2	2
CULTANA	1	1
WHYALLA BARSON	1	1
5602	17	15
COWELL	17	15

Year 3

Post Code & Suburb	Count of Meters	Count of NMI's
5603	247	198
ARNO BAY	149	119
VERRAN	71	57
WHARMINDA	27	22
5604	151	111
PORT NEILL	151	111
5605	775	576
BUTLER	68	43
TUMBY BAY	707	533
5606	1409	1060
BOSTON	1	1
PEARLAH	2	1
PORT LINCOLN	1406	1058
5607	714	566
BOSTON	61	57
BROOKER	74	54
CHARLTON GULLY	11	9
COFFIN BAY	2	2
COOMUNGA	20	17
COULTA	5	4
DUCK PONDS	7	6
FOUNTAIN	6	4
GREEN PATCH	4	3
HAWSON	37	29
KOPPIO	50	36
LIPSON	89	70
LOUTH BAY	1	1
MOODY	39	26
MURDINGA	1	1
NORTH SHIELDS	22	16
PEARLAH	14	12
POINT BOSTON	8	7
POONINDIE	32	28
TOOLIGIE	7	5
TOOTENILLA	8	6
ULEY	2	2
UNGARRA	84	62
WANGARY	28	21
WANILLA	43	35
WHITES FLAT	12	12
WHITES RIVER	5	4
YALLUNDA FLAT	42	37
5608	925	905
WHYALLA NORRIE	422	419
WHYALLA STUART	503	486
5609	548	539
WHYALLA JENKINS	548	539
5630	43	33
EDILLILIE	43	33
5631	39	26
COCKALEECHIE	11	7
CUMMINS	28	19
5632	64	47
KARKOO	26	19
YEELANNA	38	28

Year 3

Post Code & Suburb	Count of Meters	Count of NMI's
5633	4	4
LOCK	4	4
5640	414	302
CLEVE	413	301
WADDIKEE	1	1
5641	4	4
CARALUE	2	2
KIMBA	2	2
5642	21	16
DARKE PEAK	1	1
RUDALL	20	15
5700	1185	797
BLANCHE HARBOR	26	26
COMMISSARIAT POINT	126	121
CULTANA	2	2
LINCOLN GAP	1	1
PORT AUGUSTA	1018	636
PORT AUGUSTA WEST	12	11
5715	10	8
LINCOLN GAP	5	5
PANDURRA	5	3
Grand Total	129862	111796

Post Code & Suburb	Count of Meters	Count of NMI's
5000	2474	2243
ADELAIDE	2473	2242
GILBERTON	1	1
5006	3	2
NORTH ADELAIDE	3	2
5007	882	826
BOWDEN	582	540
BROMPTON	281	267
HINDMARSH	19	19
5008	1613	1426
CROYDON	315	288
CROYDON PARK	416	349
WEST CROYDON	882	789
5009	578	533
KILKENNY	578	533
5010	1405	1291
ANGLE PARK	375	347
FERRYDEN PARK	944	861
REGENCY PARK	86	83
5012	881	818
MANSFIELD PARK	273	259
WOODVILLE GARDENS	605	556
WOODVILLE NORTH	3	3
5013	1	1
WINGFIELD	1	1
5024	1395	1245
WEST BEACH	1395	1245
5031	513	488
MILE END	148	142
MILE END SOUTH	73	72
TORRENSVILLE	292	274
5032	496	452
ADELAIDE AIRPORT	1	1
BROOKLYN PARK	397	358
LOCKLEYS	98	93
5033	2807	2569
COWANDILLA	443	407
HILTON	321	307
MARLESTON	731	669
RICHMOND	1037	943
WEST RICHMOND	275	243
5034	559	522
GOODWOOD	91	88
WAYVILLE	468	434
5035	1544	1401
ASHFORD	333	296
EVERARD PARK	500	435
FORESTVILLE	339	318
KESWICK	363	343
KESWICK TERMINAL	9	9
5037	2255	2023
GLANDORE	357	303
KURRALTA PARK	577	524
NETLEY	466	414
NORTH PLYMPTON	854	781

Post Code & Suburb	Count of Meters	Count of NMI's
PLYMPTON	1	1
5038	2418	2212
CAMDEN PARK	1017	942
MARLESTON	1	1
NETLEY	1	1
NORTH PLYMPTON	3	3
PLYMPTON	1396	1265
5039	936	821
CLARENCE GARDENS	229	204
EDWARDSTOWN	1	1
MELROSE PARK	706	616
5040	88	80
NOVAR GARDENS	88	80
5041	2094	1773
COLONEL LIGHT GARDENS	401	356
CUMBERLAND PARK	333	272
DAW PARK	789	680
WESTBOURNE PARK	571	465
5042	9	8
BEDFORD PARK	9	8
5043	764	670
MARION	553	501
MITCHELL PARK	211	169
5046	1741	1642
OAKLANDS PARK	787	749
WARRADALE	954	893
5047	1930	1784
DARLINGTON	175	136
SEACOMBE GARDENS	735	711
SEACOMBE HEIGHTS	292	260
STURT	728	677
5048	2491	2186
BRIGHTON	1221	1047
DOVER GARDENS	200	190
HOVE	364	329
SOUTH BRIGHTON	706	620
5049	2215	1905
KINGSTON PARK	153	121
MARINO	444	357
SEACLIFF	587	518
SEACLIFF PARK	584	518
SEAVIEW DOWNS	447	391
5061	1981	1784
HYDE PARK	411	384
MALVERN	432	379
UNLEY	1093	985
UNLEY PARK	45	36
5062	544	471
HAWTHORN	533	462
LOWER MITCHAM	11	9
5063	1773	1570
FULLARTON	1201	1057
HIGHGATE	294	258
PARKSIDE	277	254
UNLEY	1	1

Post Code & Suburb	Count of Meters	Count of NMI's
5064	723	630
MYRTLE BANK	722	629
URRBRAE	1	1
5066	84	56
BEAUMONT	8	5
BURNSIDE	40	26
WATERFALL GULLY	36	25
5067	3379	3120
BEULAH PARK	164	151
KENT TOWN	1052	938
NORWOOD	2162	2030
TRINITY GARDENS	1	1
5068	1625	1386
KENSINGTON	38	36
KENSINGTON GARDENS	662	543
KENSINGTON PARK	380	325
ST MORRIS	257	228
TRINITY GARDENS	288	254
5070	534	457
FIRLE	34	32
PAYNEHAM SOUTH	500	425
5072	847	759
MAGILL	847	759
5073	108	90
TRANMERE	108	90
5074	1	1
CAMPBELLTOWN	1	1
5081	3049	2677
COLLINSWOOD	535	482
GILBERTON	525	473
MEDINDIE	250	186
MEDINDIE GARDENS	79	68
VALE PARK	524	459
WALKERVILLE	1136	1009
5082	238	222
OVINGHAM	207	193
PROSPECT	31	29
5083	1706	1525
BROADVIEW	752	662
NAILSWORTH	573	519
SEFTON PARK	381	344
5085	2	2
NAILSWORTH	1	1
PROSPECT	1	1
5086	1999	1817
GILLES PLAINS	716	684
HAMPSTEAD GARDENS	516	468
HILLCREST	172	157
MANNINGHAM	367	297
OAKDEN	228	211
5087	2899	2664
KLEMZIG	1876	1692
WINDSOR GARDENS	1023	972
5088	766	655
GILLES PLAINS	1	1

Post Code & Suburb	Count of Meters	Count of NMI's
HOLDEN HILL	765	654
5095	563	550
MAWSON LAKES	563	550
5106	138	135
PARAFIELD	15	15
SALISBURY SOUTH	123	120
5107	2319	2131
GREEN FIELDS	24	24
PARAFIELD GARDENS	2295	2107
5108	3552	3161
SALISBURY	2078	1818
SALISBURY DOWNS	1236	1141
SALISBURY NORTH	238	202
5109	916	838
BRAHMA LODGE	621	561
SALISBURY PLAIN	295	277
5110	1	1
BOLIVAR	1	1
5111	3	2
EDINBURGH	3	2
5114	14	11
ULEYBURY	7	6
YATTALUNGA	7	5
5116	789	724
EVANSTON	7	7
EVANSTON GARDENS	1	1
EVANSTON PARK	780	715
GAWLER SOUTH	1	1
5118	3043	2508
BIBARINGA	56	41
BUCHFELDE	64	48
CONCORDIA	8	7
GAWLER	317	240
GAWLER BELT	158	112
GAWLER EAST	804	670
GAWLER RIVER	52	40
GAWLER SOUTH	19	17
HEWETT	415	406
KALBEEBA	119	77
KANGAROO FLAT	40	28
REID	67	57
WARD BELT	49	37
WILLASTON	875	728
5120	2	2
LEWISTON	2	2
5140	94	65
GREENHILL	94	65
5157	10	7
ASHBOURNE	10	7
5158	1498	1365
HALLETT COVE	1498	1365
5160	289	286
LONSDALE	289	286
5162	619	556
MORPHETT VALE	619	556

Post Code & Suburb	Count of Meters	Count of NMI's
5165	960	849
CHRISTIES BEACH	960	849
5166	533	485
LONSDALE	3	3
O'SULLIVAN BEACH	530	482
5203	13	11
PARAWA	9	7
WATTLE FLAT	1	1
YANKALILLA	3	3
5204	639	548
CAPE JERVIS	173	158
DEEP CREEK	25	19
DELAMERE	96	72
NORMANVILLE	11	10
RAPID BAY	59	40
SECOND VALLEY	120	108
SILVERTON	32	23
WIRRINA COVE	123	118
5211	1	1
INMAN VALLEY	1	1
5214	1374	1129
CURRENCY CREEK	4	4
FINNISS	1	1
GOOLWA	507	423
GOOLWA BEACH	302	243
GOOLWA NORTH	360	296
GOOLWA SOUTH	200	162
5235	32	24
EDEN VALLEY	12	8
FLAXMAN VALLEY	20	16
5236	11	11
TUNGKILLO	11	11
5237	27	21
PALMER	27	21
5238	11	10
MANNUM	11	10
5253	922	745
MURRAY BRIDGE	798	649
MURRAY BRIDGE NORTH	49	41
WHITE HILL	12	9
WHITE SANDS	63	46
5254	304	253
CALLINGTON	3	3
CALOOTE	11	8
MONARTO	62	54
MONARTO SOUTH	67	56
MYPOLONGA	5	5
PALLAMANA	36	28
ROCKLEIGH	69	57
ROCKY GULLY	14	11
TEPKO	15	12
WALL FLAT	1	1
WHITE HILL	21	18
5255	247	200
ANGAS PLAINS	3	3

Post Code & Suburb	Count of Meters	Count of NMI's
FINNISS	131	105
SANDERGROVE	49	39
STRATHALBYN	55	47
WILLYAROO	9	6
5256	303	255
CLAYTON BAY	248	215
MILANG	20	16
NURRAGI	12	9
POINT STURT	23	15
5267	16	13
WILLALOOKA	16	13
5268	368	303
BANGHAM	70	55
BORDERTOWN	115	91
BORDERTOWN SOUTH	19	15
CANNAWIGARA	11	10
POOGINAGORIC	39	34
SENIOR	21	19
WESTERN FLAT	93	79
5269	161	132
CUSTON	8	8
PINE HILL	50	40
WOLSELEY	103	84
5270	55	43
BUCKINGHAM	6	5
CAREW	21	14
KONGAL	20	17
MUNDULLA WEST	3	3
SWEDE FLAT	5	4
5271	296	234
MARCOLLAT	116	95
PADTHAWAY	176	136
THE GAP	4	3
5272	169	119
COLES	22	15
CONMURRA	98	68
GREENWAYS	49	36
5275	212	175
BOATSWAIN POINT	41	38
KEILIRA	52	38
KINGSTON SE	6	6
MOUNT BENSON	92	73
REEDY CREEK	5	4
ROBE	1	1
ROSETOWN	3	3
TARATAP	1	1
WANGOLINA	11	11
5276	1109	870
BRAY	63	46
NORA CREINA	65	58
ROBE	981	766
5277	605	478
MAAOUPE	20	14
MINGBOOL	1	1
MONBULLA	72	54

Post Code & Suburb	Count of Meters	Count of NMI's
NANGWARRY	204	179
PENOLA	85	67
PLEASANT PARK	31	23
TARPEENA	189	138
WATTLE RANGE EAST	3	2
5278	313	245
KALANGADOO	278	215
KRONGART	3	2
MOERLONG	8	7
WEPAR	24	21
5279	277	224
KALANGADOO	7	4
KOORINE	28	21
MOUNT BURR	151	129
MOUNT MCINTYRE	50	40
SHORT	11	9
TRIH	1	1
WATTLE RANGE EAST	29	20
5280	1035	752
BEACHPORT	93	66
CLAY WELLS	19	15
FURNER	2	2
KANGAROO INN	1	1
MAGAREY	11	10
MILLICENT	702	497
TANTANOOLA	138	109
WATTLE RANGE	69	52
5290	2063	1606
MOUNT GAMBIER	2062	1605
WORROLONG	1	1
5291	402	290
CANUNDA	1	1
DISMAL SWAMP	14	10
GLENCOE	273	193
MIL-LEL	16	12
MINGBOOL	87	64
OB FLAT	5	5
WANDILO	4	4
WORROLONG	2	1
5304	3	2
KRINGIN	3	2
5308	7	5
MAGGEA	5	3
MANTUNG	2	2
5311	342	268
ALAWOONA	36	30
BUGLE HUT	29	23
MAGGEA	14	13
MALPAS	25	20
MERIBAH	60	43
PARUNA	43	35
SHELL WELL	9	8
TALDRA	53	43
TAPLAN	51	36
VEITCH	5	4

Post Code & Suburb	Count of Meters	Count of NMI's
WOODLEIGH	17	13
5320	3	3
STUART	3	3
5321	2	2
CADELL	2	2
5322	256	204
GOLDEN HEIGHTS	117	95
QUALCO	12	9
RAMCO	84	63
RAMCO HEIGHTS	39	34
SUNLANDS	4	3
5330	1598	1215
BOOLGUN	4	4
DEVLINS POUND	16	13
GOLDEN HEIGHTS	1	1
GOOD HOPE LANDING	15	12
HOLDER	62	50
HOLDER SIDING	7	6
KANNI	21	16
LOWBANK	34	25
MARKARANKA	3	3
OVERLAND CORNER	60	48
POOGINOOK	14	14
STOCKYARD PLAIN	3	3
TAYLORVILLE	72	55
WAIKERIE	1244	929
WIGLEY FLAT	28	23
WOOLPUNDA	14	13
5331	1	1
KINGSTON ON MURRAY	1	1
5332	6	5
WAPPILKA	6	5
5333	1108	856
LOXTON	931	720
NEW RESIDENCE	75	55
PYAP	101	80
PYAP WEST	1	1
5340	2	2
PIKE RIVER	2	2
5341	1	1
YAMBA	1	1
5342	17	8
MONASH	17	8
5343	765	530
BERRI	765	530
5345	732	569
BARMERA	433	331
LOVEDAY	299	238
5346	168	128
COBDOGLA	168	128
5350	12	6
SANDY CREEK	12	6
5352	55	44
GOMERSAL	1	1
STONE WELL	33	26

Post Code & Suburb	Count of Meters	Count of NMI's
TANUNDA	11	9
VINE VALE	10	8
5353	760	585
ANGASTON	527	408
KEYNETON	100	76
MOUNT MCKENZIE	20	16
PENRICE	113	85
5354	27	22
BAKARA WELL	7	6
NAIDIA	7	4
SWAN REACH	13	12
5355	670	514
LIGHT PASS	107	80
MARANANGA	47	35
MOPPA	20	14
NURIOOTPA	449	350
SEPPELTSFIELD	40	29
STOCKWELL	7	6
5356	1	1
DUTTON	1	1
5357	20	15
NEW WELL	17	13
NOTTS WELL	3	2
5360	267	210
GREENOCK	250	197
NAIN	17	13
5371	222	164
ROSEWORTHY	204	151
TEMPLERS	17	12
WASLEYS	1	1
5372	5	5
FREELING	5	5
5373	17	15
ALLENDAL NORTH	1	1
KAPUNDA	16	14
5374	538	397
AUSTRALIA PLAINS	19	16
BOWER	11	9
BROWNLOW	20	18
BUCHANAN	6	5
EUDUNDA	394	279
FRANKTON	1	1
HANSBOROUGH	24	16
MOUNT MARY	9	8
NEALES FLAT	23	18
PEEP HILL	9	7
POINT PASS	6	5
SUTHERLANDS	16	15
5381	3	2
ROCKY PLAIN	3	2
5400	210	175
MAGDALA	22	18
PINKERTON PLAINS	27	22
ROSEWORTHY	1	1
WASLEYS	148	125

Post Code & Suburb	Count of Meters	Count of NMI's
WOOLSHEDS	12	9
5401	20	18
HAMLEY BRIDGE	20	18
5410	10	8
LINWOOD	3	3
STOCKPORT	7	5
5411	1	1
TARLEE	1	1
5412	216	165
RHYNIE	3	3
RIVERTON	213	162
5413	252	184
SADDLEWORTH	249	181
TOTHILL BELT	1	1
WATERLOO	2	2
5414	59	46
MANOORA	59	46
5415	20	17
MINTARO	20	17
5451	70	56
AUBURN	65	52
UNDALYA	5	4
5452	17	14
WATERVALE	17	14
5453	114	87
BOCONNOC PARK	7	6
BOWILLIA	3	2
HOYLETON	51	39
KYBUNGA	51	38
SPRING GULLY	2	2
5454	144	108
ANDREWS	7	6
BROUGHTON RIVER VALLEY	2	2
EUROMINA	23	16
SPALDING	112	84
5455	11	9
BROUGHTON RIVER VALLEY	10	8
EUROMINA	1	1
5460	28	25
BARABBA	25	22
OWEN	2	2
PINERY	1	1
5461	48	42
BALAKLAVA	18	17
BOWILLIA	5	4
EVERARD CENTRAL	19	16
HALBURY	6	5
5462	31	26
BLYTH	31	26
5464	280	211
ANAMA	1	1
BRINKWORTH	164	118
CONDOWIE	25	20
HART	2	2
KOOLUNGA	80	63

Post Code & Suburb	Count of Meters	Count of NMI's
MAROLA	4	4
ROCHESTER	4	3
5470	73	54
YACKA	73	54
5471	6	4
GULNARE	6	4
5472	92	64
GEORGETOWN	92	64
5473	1	1
GLADSTONE	1	1
5501	2066	1660
CALOMBA	25	19
DUBLIN	123	106
KORUNYE	2	2
LEWISTON	669	515
LONG PLAINS	19	14
LOWER LIGHT	75	64
MIDDLE BEACH	50	46
PARHAM	103	99
PORT GAWLER	47	33
THOMPSON BEACH	95	91
TWO WELLS	743	570
WEBB BEACH	24	23
WILD HORSE PLAINS	37	30
WINDSOR	54	48
5502	521	404
FISCHER	12	10
GRACE PLAINS	16	14
KORUNYE	77	58
MALLALA	290	215
REDBANKS	60	50
REEVES PLAINS	66	57
5510	19	17
LOCHIEL	19	17
5520	337	248
BARUNGA GAP	22	16
BUMBUNGA	25	19
BURNSFIELD	6	5
SNOWTOWN	261	190
WOKURNA	23	18
5521	112	81
REDHILL	112	81
5522	15	11
PORT BROUGHTON	8	6
WARD HILL	7	5
5523	676	514
BEETALOO VALLEY	1	1
CLEMENTS GAP	33	26
CRYSTAL BROOK	518	390
HUDDLESTON	14	11
MERRITON	15	12
NARRIDY	37	29
NUROM	8	6
WANDEARAH EAST	40	30
WANDEARAH WEST	10	9

Post Code & Suburb	Count of Meters	Count of NMI's
5540	167	131
BUNGAMA	37	32
LOWER BROUGHTON	30	22
PIRIE EAST	25	19
PORT DAVIS	4	3
PORT PIRIE SOUTH	3	2
WARNERTOWN	68	53
5550	10	8
BUMBUNGA	1	1
NANTAWARRA	4	3
PORT WAKEFIELD	5	4
5552	45	35
KULPARA	18	13
PASKEVILLE	10	8
SUNNYVALE	13	11
THRINGTON	4	3
5554	1189	892
BOORS PLAIN	11	10
CUNLIFFE	26	20
KADINA	802	593
NEW TOWN	287	221
THOMAS PLAIN	19	13
WALLAROO MINES	10	7
WILLAMULKA	34	28
5555	209	180
ALFORD	89	72
COLLINSFIELD	8	7
HOPE GAP	10	8
LAKE VIEW	12	9
TICKERA	90	84
5556	45	35
NORTH BEACH	1	1
WALLAROO	1	1
WALLAROO PLAIN	43	33
5558	37	30
AGERY	22	18
NALYAPPA	12	10
WILLAMULKA	3	2
5560	213	162
BUTE	178	135
NINNES	35	27
5571	530	384
ARDROSSAN	530	384
5572	20	17
ARTHURTON	20	17
5573	398	335
BALGOWAN	1	1
CHINAMAN WELLS	19	19
POINT PEARCE	49	42
PORT VICTORIA	312	258
URANIA	7	5
WAURALTEE	10	10
5575	33	28
KOOLYWURTIE	17	14
MINLATON	16	14

Post Code & Suburb	Count of Meters	Count of NMI's
5580	69	51
CURRAMULKA	69	51
5600	378	318
MIDDLEBACK RANGE	1	1
WHYALLA NORRIE	5	5
WHYALLA PLAYFORD	372	312
5602	632	519
COWELL	398	323
LUCKY BAY	61	61
MANGALO	43	33
MIDGEE	12	9
MILTALIE	48	37
MINBRIE	35	29
MITCHELLVILLE	28	21
PORT GIBBON	7	6
5606	1494	1079
PORT LINCOLN	1494	1079
5607	19	16
LINCOLN NATIONAL PARK	7	7
SLEAFORD	12	9
5608	1459	1046
WHYALLA NORRIE	360	260
WHYALLA STUART	1099	786
5609	3	2
MIDDLEBACK RANGE	3	2
5611	2	2
COOYERDOO	2	2
5640	6	5
WADDIKEE	6	5
5641	704	532
BARNA	15	12
BUCKLEBOO	40	31
CARALUE	18	13
CORTLINYE	32	24
CUNYARIE	16	12
KELLY	66	49
KIMBA	333	248
MOSELEY	21	17
PANITYA	12	9
PINKAWILLINIE	68	49
SOLOMON	55	44
WILCHERRY	7	7
YALANDA	21	17
5650	14	10
COOTRA	11	8
KOONGAWA	3	2
5700	1674	1184
PORT AUGUSTA	1674	1184
5710	1	1
STIRLING NORTH	1	1
5950	2	2
ADELAIDE AIRPORT	2	2
Grand Total	103068	88208

Year 5

Post Code & Suburb	Count of Meters	Count of NMI's
5000	5	5
ADELAIDE	5	5
5007	668	647
BROMPTON	659	638
HINDMARSH	9	9
5008	2241	1878
BROMPTON	6	5
CROYDON PARK	615	499
DEVON PARK	387	326
DUDLEY PARK	185	162
RENOWN PARK	582	481
RIDLEYTON	466	405
5010	1	1
CROYDON PARK	1	1
5013	8	8
WINGFIELD	8	8
5022	649	591
HENLEY BEACH	7	5
HENLEY BEACH SOUTH	642	586
5024	669	575
FULHAM	669	575
5031	3094	2909
MILE END	1345	1259
THEBARTON	689	662
TORRENSVILLE	1060	988
5032	3496	3169
BROOKLYN PARK	1302	1211
LOCKLEYS	1429	1267
UNDERDALE	765	691
5033	2	2
HILTON	2	2
5038	393	338
CAMDEN PARK	101	92
PLYMPTON	291	245
PLYMPTON PARK	1	1
5040	479	370
NOVAR GARDENS	479	370
5043	276	253
MORPHETTVILLE	276	253
5044	3078	2757
GLENGOWRIE	1312	1209
SOMERTON PARK	1766	1548
5045	5187	4687
GLENELG	1916	1739
GLENELG EAST	1291	1146
GLENELG NORTH	1024	926
GLENELG SOUTH	956	876
5046	797	714
OAKLANDS PARK	324	286
WARRADALE	473	428
5048	866	774
BRIGHTON	1	1
HOVE	454	406
NORTH BRIGHTON	411	367
5065	545	422

Year 5

Post Code & Suburb	Count of Meters	Count of NMI's
LINDEN PARK	239	189
TOORAK GARDENS	306	233
5066	146	123
BURNSIDE	2	1
HAZELWOOD PARK	143	121
WATTLE PARK	1	1
5067	1501	1308
BEULAH PARK	301	275
NORWOOD	798	672
ROSE PARK	402	361
5068	1473	1288
KENSINGTON	827	736
KENSINGTON PARK	349	296
ST MORRIS	297	256
5070	705	646
FIRLE	151	139
GLYNDE	22	18
PAYNEHAM	532	489
5072	2241	1937
AULDANA	126	104
MAGILL	1722	1535
ROSSLYN PARK	76	64
SKYE	77	46
TERINGIE	93	81
WOODFORDE	147	107
5073	2437	2139
HECTORVILLE	66	56
NEWTON	1	1
ROSTREVOR	1587	1362
TRANMERE	783	720
5074	1467	1357
CAMPBELLTOWN	233	218
NEWTON	1234	1139
5075	1793	1602
ATHELSTONE	1	1
DERNANCOURT	719	626
PARADISE	1073	975
5076	1768	1554
ATHELSTONE	1751	1541
CASTAMBUL	17	13
5082	14	11
PROSPECT	14	11
5084	1498	1397
BLAIR ATHOL	33	32
KILBURN	1465	1365
5085	1201	1099
CLEARVIEW	627	570
ENFIELD	574	529
5086	112	106
GILLES PLAINS	112	106
5087	368	321
WINDSOR GARDENS	368	321
5088	355	306
HOLDEN HILL	353	304
MODBURY	2	2

Year 5

Post Code & Suburb	Count of Meters	Count of NMI's
5089	799	678
HIGHBURY	796	676
HOPE VALLEY	3	2
5090	2001	1731
HOPE VALLEY	2001	1731
5091	948	786
BANKSIA PARK	120	93
TEA TREE GULLY	668	555
VISTA	160	138
5092	1546	1398
HOPE VALLEY	1	1
MODBURY	1074	951
MODBURY HEIGHTS	94	93
MODBURY NORTH	377	353
5094	304	291
CAVAN	49	49
DRY CREEK	185	173
GEPPS CROSS	70	69
5095	217	214
MAWSON LAKES	217	214
5097	2124	1870
RIDGEHAVEN	1163	1015
ST AGNES	961	855
5114	18	15
ULEYBURY	18	15
5115	133	104
KUDLA	133	104
5116	1335	1134
EVANSTON	662	558
EVANSTON GARDENS	335	302
EVANSTON SOUTH	55	53
HILLIER	283	221
5117	1	1
ANGLE VALE	1	1
5118	1291	1002
BIBARINGA	2	1
BUCHFELDE	1	1
CONCORDIA	33	25
GAWLER	167	145
GAWLER BELT	23	20
GAWLER EAST	357	276
GAWLER SOUTH	406	312
GAWLER WEST	285	209
KALBEEBA	4	3
KINGSFORD	13	10
5126	227	225
SURREY DOWNS	227	225
5127	217	209
WYNN VALE	217	209
5132	7	5
PARACOMBE	7	5
5134	168	132
CHERRYVILLE	48	36
MONTACUTE	120	96
5136	1	1

Year 5

Post Code & Suburb	Count of Meters	Count of NMI's
NORTON SUMMIT	1	1
5141	2	2
HORSNELL GULLY	2	2
5158	1529	1454
HALLETT COVE	71	70
O'HALLORAN HILL	57	50
SHEIDOW PARK	967	930
TROTT PARK	434	404
5160	330	326
LONSDALE	330	326
5161	360	322
OLD REYNELLA	51	46
REYNELLA	309	276
5162	290	285
MORPHETT VALE	290	285
5164	1099	959
CHRISTIE DOWNS	1099	959
5165	197	191
CHRISTIES BEACH	197	191
5202	1	1
MYPONGA BEACH	1	1
5203	30	22
YANKALILLA	30	22
5204	741	590
CARRICKALINGA	329	263
NORMANVILLE	412	327
5213	16	11
MIDDLETON	16	11
5214	1440	1176
GOOLWA	482	422
GOOLWA SOUTH	346	271
HINDMARSH ISLAND	609	480
MUNDOD ISLAND	3	3
5231	1	1
KERSBROOK	1	1
5253	1545	1178
MURRAY BRIDGE	1505	1143
MURRAY BRIDGE NORTH	4	2
NORTHERN HEIGHTS	36	33
5254	17	13
ROCKY GULLY	17	13
5272	37	27
FOX	36	26
GREENWAYS	1	1
5276	2	2
BRAY	1	1
ROBE	1	1
5280	2278	1717
BEACHPORT	319	235
CANUNDA	4	3
CLAY WELLS	28	21
FURNER	98	73
GERMAN CREEK	21	14
GERMAN FLAT	25	19
HATHERLEIGH	67	48

Year 5

Post Code & Suburb	Count of Meters	Count of NMI's
KANGAROO INN	11	9
MAGAREY	16	13
MILLICENT	1238	935
RENDELSHAM	93	73
ROCKY CAMP	43	33
SEBASTOPOL	35	28
SOUTHEND	169	127
TANTANOOOLA	67	53
THORNLEA	39	28
WATTLE RANGE	5	5
5290	804	688
MOUNT GAMBIER	804	688
5291	933	656
BURRUNGULE	53	35
CANUNDA	8	5
CAROLINE	12	9
CAVETON	5	5
COMPTON	32	27
GERMAN CREEK	4	3
GLENBURNIE	47	34
KONGORONG	2	1
MOORAK	246	176
MOUNT SCHANK	1	1
OB FLAT	148	101
SQUARE MILE	19	14
WORROLONG	60	32
YAHL	296	213
5308	26	20
GALGA	1	1
MANTUNG	17	14
MERCUNDA	8	5
5309	53	42
HALIDON	14	12
MINDARIE	37	28
SANDALWOOD	2	2
5310	64	50
CALIPH	12	9
WANBI	52	41
5311	88	68
BUGLE HUT	6	5
MAGGEA	7	5
MALPAS	4	3
PARUNA	4	3
VEITCH	13	11
WOODLEIGH	18	12
WUNKAR	36	29
5320	462	380
BEAUMONTS	7	7
BRENDA PARK	14	14
MORGAN	299	237
MORPHETTS FLAT	2	2
MURBKO	121	102
NORTH WEST BEND	8	8
STUART	6	5
WOMBATS REST	5	5

Year 5

Post Code & Suburb	Count of Meters	Count of NMI's
5321	265	215
CADELL	263	213
CADELL LAGOON	2	2
5322	237	190
QUALCO	46	36
RAMCO	4	2
RAMCO HEIGHTS	1	1
SUNLANDS	186	151
5330	126	95
BOOLGUN	2	2
MARKARANKA	10	6
STOCKYARD PLAIN	2	2
TAYLORVILLE	111	84
WOOLPUNDA	1	1
5332	15	13
WAPPILKA	11	9
YINKANIE	4	4
5333	1240	930
BOOKPURNONG	61	53
LOXTON	755	572
LOXTON NORTH	372	261
PATA	24	22
PYAP	2	2
PYAP WEST	26	20
5340	4	4
PIKE RIVER	4	4
5342	346	261
MONASH	346	261
5343	125	87
BERRI	114	80
GLOSSOP	1	1
GURRA GURRA	9	5
WINKIE	1	1
5344	406	302
GLOSSOP	406	302
5345	575	422
BARMERA	575	422
5350	87	72
ROSEDALE	44	37
SANDY CREEK	43	35
5351	109	90
ALTONA	1	1
COCKATOO VALLEY	82	66
LYNDOCH	13	12
MOUNT CRAWFORD	1	1
PEWSEY VALE	1	1
WILLIAMSTOWN	11	9
5352	32	26
KRONDORF	1	1
ROWLAND FLAT	8	7
TANUNDA	21	16
VINE VALE	2	2
5353	252	197
ANGASTON	252	197
5354	9	6

Year 5

Post Code & Suburb	Count of Meters	Count of NMI's
FISHER	1	1
SWAN REACH	8	5
5355	1351	1073
EBENEZER	3	3
LIGHT PASS	44	34
MOPPA	2	2
NURIOOTPA	1299	1031
STOCKWELL	3	3
5357	260	240
BLANCHETOWN	176	165
MCBEAN POUND	20	17
PAISLEY	64	58
5360	4	3
GREENOCK	2	2
NAIN	2	1
5371	99	75
MORN HILL	5	4
ROSEWORTHY	6	4
SHEA-OAK LOG	62	47
TEMPLERS	26	20
5372	509	410
FREELING	508	409
MORN HILL	1	1
5373	1108	857
ALLENDALÉ NORTH	51	44
BAGOT WELL	36	27
BETHEL	36	28
FORDS	30	22
HAMILTON	3	3
KAPUNDA	927	713
KOONUNGA	20	17
ST JOHNS	5	3
5374	11	6
HANSBOROUGH	11	6
5410	18	13
LINWOOD	18	13
5422	8	8
PETERBOROUGH	8	8
5431	1	1
ORROROO	1	1
5471	1	1
GULNARE	1	1
5472	1	1
GEORGETOWN	1	1
5473	19	14
GLADSTONE	19	14
5480	323	225
LAURA	309	213
STONE HUT	14	12
5481	368	267
BANGOR	21	17
MURRAY TOWN	42	28
WIRRABARA	274	195
WONGYARRA	31	27
5482	217	156

Year 5

Post Code & Suburb	Count of Meters	Count of NMI's
BOOLEROO CENTRE	217	156
5483	176	130
MELROSE	176	130
5491	4	4
JAMESTOWN	4	4
5495	336	273
BAROOTA	78	55
MAMBRAY CREEK	23	21
NECTAR BROOK	9	5
PORT GERMEIN	195	163
WEEROONA ISLAND	30	28
WINNINOWIE	1	1
5510	49	38
LOCHIEL	49	38
5523	10	8
CRYSTAL BROOK	10	8
5540	749	698
BUNGAMA	10	8
COONAMIA	42	35
NAPPERBY	2	2
NELSHABY	6	5
PORT PIRIE	224	217
PORT PIRIE SOUTH	6	6
PORT PIRIE WEST	253	232
RISDON PARK	161	151
TELOWIE	30	27
WARNERTOWN	4	4
WEEROONA ISLAND	11	11
5550	26	20
BEAUFORT	1	1
SOUTH HUMMOCKS	25	19
5552	24	21
KAINTON	19	16
KULPARA	4	4
SUNNYVALE	1	1
5555	43	33
DOWLINGVILLE	26	20
WINULTA	17	13
5556	524	403
WALLAROO	524	403
5560	3	3
NINNES	3	3
5570	342	289
CLINTON	217	192
CLINTON CENTRE	10	8
PRICE	115	89
5571	63	45
ARDROSSAN	1	1
CUNNINGHAM	7	4
DOWLINGVILLE	2	2
PETERSVILLE	53	38
5572	100	77
ARTHURTON	100	77
5573	256	217
BALGOWAN	122	113

Year 5

Post Code & Suburb	Count of Meters	Count of NMI's
MAITLAND	99	76
WEETULTA	35	28
5600	758	625
DOUGLAS POINT	18	18
FITZGERALD BAY	8	8
MIDDLEBACK RANGE	3	3
POINT LOWLY	25	25
POINT LOWLY NORTH	3	3
WHYALLA	197	144
WHYALLA PLAYFORD	504	424
5601	49	49
BACKY POINT	2	2
DOUGLAS POINT	2	2
DOUGLAS POINT SOUTH	6	6
FALSE BAY	10	10
FITZGERALD BAY	6	6
MURNINNIE BEACH	13	13
POINT LOWLY	2	2
WHYALLA BARSON	8	8
5606	1308	981
PORT LINCOLN	1308	981
5607	372	318
COFFIN BAY	371	317
WANGARY	1	1
5608	1460	1074
MULLAQUANA	87	67
WHYALLA NORRIE	748	574
WHYALLA STUART	625	433
5609	7	7
MIDDLEBACK RANGE	7	7
5700	85	79
DAVENPORT	1	1
MIRANDA	35	33
PORT AUGUSTA	27	25
PORT PATERSON	21	19
WHYALLA BARSON	1	1
5710	459	349
STIRLING NORTH	456	346
WINNINOWIE	3	3
Grand Total	78544	67272