



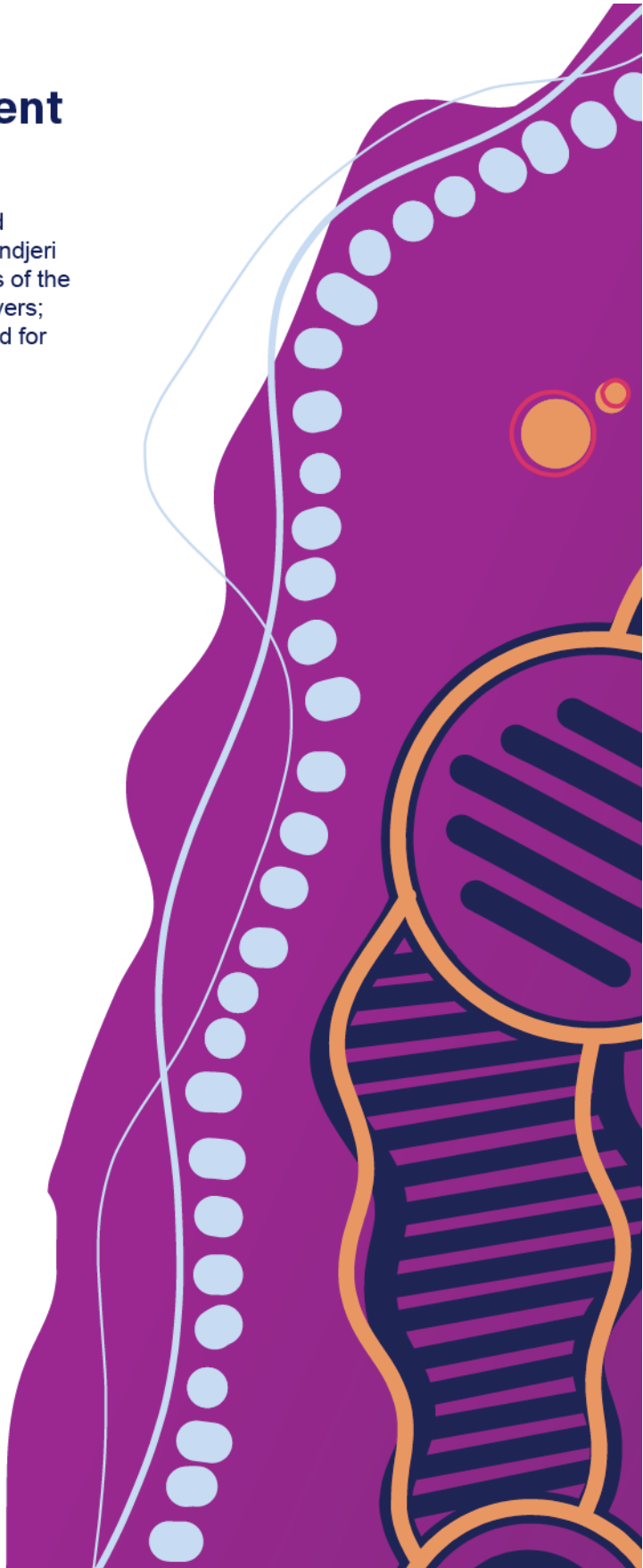
**UNITED
ENERGY
TARIFF
STRUCTURE
STATEMENT
2026-2031
COMPLIANCE
DOCUMENT**

This page is intentionally blank

Acknowledgement of Country

United Energy acknowledges and respects the Bunurong and Wurundjeri People as the original Custodians of the lands and waters our network covers; lands First Peoples have occupied for tens of thousands of years.

United Energy pays our respects to Elders past and present and acknowledge their ancient and continuing connection to Country.



About this tariff structure statement

The main objective of this Tariff Structure Statement (TSS) Compliance Document is to outline our tariff structures for the 2026-31 regulatory control period and to demonstrate compliance with the National Electricity Rules (NER). Additionally, we have provided a TSS Explanatory Statement that details the rationale behind our tariff structures.

Table of contents

1. Tariff classes and allocations	6
1.1 Tariff classes	6
1.2 Allocation of customers to tariff classes	7
2. Approach to setting tariffs	8
2.1 Standalone and avoidable cost	8
2.2 Long run marginal cost	9
2.3 Efficient costs	10
2.4 Revenue changes for each tariff class comply with the side constraint	10
2.5 Basic export level	11
2.6 Price movement during the regulatory period	11
3. Tariff structures and charging parameters	12
3.1 Residential customer tariffs	16
3.2 Small and Medium business tariffs	17
3.3 Large business tariffs	18
3.4 Trial tariffs for the first year of the regulatory period	19
4. Tariff assignment	21
4.1 Residential customers	21
4.2 Small and medium businesses	22
4.3 Large business	23
4.4 Flexible connections	24
5. Export tariff transition strategy	26
5.1 Rules requirements	26
5.2 Overview of export tariffs and strategy	26
5.3 Basic export level	27
6. Alternative control services	28
6.1 Public lighting	28
6.2 Ancillary network services	28
6.3 Metering services	28

7. Compliance checklist





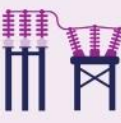
30

1. Tariff classes and allocations

1.1 Tariff classes

United Energy supplies electricity to residential and commercial customers assigned to five tariff classes. These tariff classes are determined based on factors such as customer usage, voltage requirements, and the type of connection. Figure 1 shows United Energy's tariff classes.

FIGURE 1 TARIFF CLASSES

	Tariff class	Supply voltage	Consumption
	Residential	<1kV	N/A
	Small and medium business	<1kV	≤160MWh p.a.
	Large low voltage	<1kV	>160MWh p.a.
	High voltage	≥1kV and <66kV	N/A
	Sub-transmission	≥66kV	N/A

1

Our new flexible tariffs will be assigned as follows:

- Flexible small will be assigned to small and medium business tariff class
- Flexible large will be assigned to high voltage tariff class
- Flexible TUOS pass-through will be assigned to sub-transmission tariff class

¹ All United Energy sub-transmission is ≥66kV with the exception of one sub-transmission feeder from Malvern terminal station which is 22kV.

1.2 Allocation of customers to tariff classes

Assignment of existing customers to tariff classes at the commencement of the next regulatory control period

Any customer who was served by United Energy immediately prior to 1 July 2026 and remains a United Energy customer as of 1 July 2026 will be deemed "assigned" to the tariff class applicable to them as of the period immediately preceding 1 July 2026.

Assignment of new or modified connections to a tariff class

If, after 1 July 2026, United Energy becomes aware that a person will become a customer of United Energy, then United Energy will determine the tariff class to which the new customer will be assigned.

A customer that lodges an application to modify or upgrade an existing network connection from single to multi-phase or upgrades their connection to a bi-directional flow is treated identically to a new customer with respect to their assignment to a tariff class.

If United Energy becomes aware of a new or modified connection, then United Energy will determine the tariff class to which the customer of that connection will be assigned in accordance with the eligibility criteria in this tariff structure statement.

Reassignment of existing customers to tariff classes

United Energy will periodically review existing customers to ensure they continue to meet the eligibility criteria for their assigned tariff class.

Customers may be reassigned to a different tariff class if their connection characteristics or consumption levels have changed, rendering their current assignment no longer appropriate.

Customers or their retailers may request a tariff reassignment by submitting information demonstrating that the customer satisfies the eligibility criteria for the desired tariff class.

Notification and objections of proposed tariff class reassignments

United Energy will notify a customer's retailer in writing of the tariff class to which the retail customer will be re-assigned, prior to the re-assignment occurring.

If a request is received for additional information from a customer's retailer, the requested information will be provided within a reasonable timeframe.

If a customer's retailer submits an objection to United Energy in response to a notice regarding a proposed reassignment, United Energy will review the proposed action, considering all relevant facts. The retailer will then be notified in writing of the reconsidered decision, including the rationale for that decision.

2. Approach to setting tariffs

This section outlines United Energy's methodology for establishing tariffs for standard control services in compliance with the NER². Consistent with the pricing objectives and principles outlined in the NER³, we have determined the tariff charges for standard control services by:

- establishing tariff rates at levels ensuring the expected revenue from customers falls within:
 - the standalone cost of serving customers within the tariff class; and
 - the avoidable cost of not serving those customers.
- giving consideration for setting each tariff with the long-run marginal cost (LRMC) of providing import and, where applicable, export services to the customers within the tariff class
- setting tariff rates to reflect the efficient costs of delivering the services
- considering and minimising the impact of tariff changes on customers
- making our network tariff structures understandable to retail customers or capable of being incorporated into retail offers
- making tariffs compliant with the NER and all applicable regulatory instruments.

2.1 Standalone and avoidable cost

We must ensure that the revenue recovered for each tariff class lies between:

- an upper bound, representing the stand-alone cost of serving customers who belong to that class
- a lower bound, representing the avoidable cost of not serving those customers.

We have calculated the stand-alone and avoidable costs associated with each standard control service tariff class. These calculated costs are then compared to the distribution revenue generated by our proposed tariffs for each tariff class.

Our stand-alone and avoidable costs have been calculated in the model attachment [UE RRP MOD TSS.02 - Stand alone and avoidable cost - Dec2025 - Public](#).

Stand-alone costs have been calculated assuming the existing network configuration with:

- direct assets allocated based on assets directly attributable to supplying that asset class and indirect assets allocated based on a customer number and demand composite allocator
- variable O&M costs allocated based on demand and fixed O&M costs allocated based on stand-alone RAB value.

Avoidable costs have been calculated assuming that vegetation management, maintenance and emergency responses costs vary with customer numbers and non-coincident demand.

² NER clause 6.18.1A(a)(5)

³ NER clause 6.18.5

Table 2.1 demonstrates that 2026/27 forecast distribution revenue falls between avoidable and stand-alone costs.

TABLE 2.1 2026/27 REVENUE COMPARED WITH AVOIDABLE AND STAND-ALONE COSTS

TARIFF CLASS	AVOIDABLE COST		DISTRIBUTION REVENUE		STAND-ALONE COST	
	\$000	2026-27	\$000	2026-27	\$000	2026-27
Residential		39,546		280,328		423,726
Small and medium business		5,544		116,906		232,135
Large low voltage		4,627		126,745		232,988
High voltage		1,505		23,783		130,340
Sub-transmission		73		510		7,323

2.2 Long run marginal cost

Clause 6.18.5(f) of the NER requires that our tariffs are based on the long run marginal cost (LRMC) of providing network services to our customers.

LRMC for both import and exports has been calculated using Oakley Greenwood's model based on 10 years of forecasts.

The Average Incremental Cost (AIC) approach was used for the purpose of calculating the LRMC outlined below. United Energy has adopted this approach for several reasons, including but not limited to:

- It is commonly used by distribution networks, as it is generally considered to be well suited to situations where there is fairly consistent profile of investment over time to service growth in demand, and
- It does not rely on a forecast of growth in the demand for United Energy that differs materially from the broader forecasts that underpin other components of the regulatory proposal.

The AIC approach to determining the LRMC utilises the following formula:

$$LRMC = \frac{\sum NPV(\text{Forecast Augmentation Capex} + \text{Forecast Augmentation} - \text{related Opex})}{\sum NPV(\text{Forecast Cumulative Growth in MVA})}$$

Our LRMC has been calculated in the model attachment [UE RRP MOD TSS.01 – Long run marginal cost - Dec2025 - Public](#).

Types of costs and demand growth included in the LRMC estimates

We incur several different costs, not all of which are relevant to the derivation of its import LRMC. We have only included forecast costs that might be able to be mitigated by the broader customer base, if they were to respond to the price signal derived by the LRMC. In general, this means that only 'shared network augmentation' costs that will vary with changes in future demand (and

any associated opex⁴) have been included. For import services, these costs have been allocated to different network categories – sub transmission, high voltage Network, zone substations and distribution substations (DSS) and low voltage network.

We have used the cumulative growth in its forecast system-wide peak demand (by voltage level) as its denominator for the purposes of determining its import LRMC.

Inputs for our export LRMC are the cost of implementing and running flexible export services and the energy forecast to be exported into our network at low voltage.

The results of the LRMC calculation are shown in Table 2.2 and Table 2.3.

TABLE 2.2 LRMC - IMPORT

VOLTAGE LEVEL	LRMC (\$/KVA) BY VOLTAGE LEVEL	LRMC (\$/KVA) BY CONNECTION
Sub Transmission	\$28.21	\$28.21
High Voltage Network	\$5.70	\$45.97
Zone substations	\$12.06	\$40.27
DSS and Low Voltage Network	\$70.70	\$116.67

TABLE 2.3 LRMC - EXPORT

VOLTAGE LEVEL	LRMC (\$/KWH)
Export	\$0.01

The Explanatory Statement explains how LRMC has been considered in our tariffs.

2.3 Efficient costs

The AER has systems and process to ensure that distributors are only allowed to set prices to recover efficient costs.

2.4 Revenue changes for each tariff class comply with the side constraint

Under the NER⁵, we are subject to pricing side constraints that limit the annual movement of revenue recovery between tariff classes. Specifically, no tariff class may experience an increase exceeding 2% above the average increase for all tariffs. These constraints apply exclusively to Distribution Use of System (DUOS) charges and to tariff classes, rather than to individual tariffs, tariff charging components, or outcomes for individual customers.

⁴ United Energy has assumed that OPEX in a year is 0.5% of the cumulative capex that has been spent to that point.
⁵ NER clause 6.18.6

This side constraint does not apply in the first year of a regulatory period. Compliance with this requirement is addressed as part of our Annual Pricing Proposals and is therefore not detailed in this TSS.

For regulatory years 2–5 of the 2026–31 period, United Energy will ensure that the annual increase for each tariff class remains within 2% of the average DUOS price increase across all tariffs.

2.5 Basic export level

The NER requires us to apply a basic export level (BEL) for export charges, which defines the amount of electricity a customer can export to the grid without incurring a cost. The BEL is set at 1 kWh per day for all opt in tariffs with an export charge⁶.

The Explanatory Statement explains why a BEL of 1 kWh per day is applied.

2.6 Price movement during the regulatory period

For the 2026–31 regulatory period, we will continue to reduce the residential and small business time of use (ToU) network tariffs by an additional one per cent per year relative to the single-rate network tariff, for the average customer consumption profile. By 2030–31, the residential and small business ToU network tariff will, on average, be priced ten per cent lower than the single-rate network tariff.

Over the 2026-31 regulatory period, we will progressively increase the proportion of network revenue recovered by small businesses through the fixed daily supply charge so that by the 2030-31 roughly 30% of network revenue will be recovered through the fixed daily supply charge.

⁶ Total kWh exempt from export charges are determined by multiplying 1 kWh per day by the number of days in the billing period. If exports between 11:00am and 4:00pm are less than 1 kWh, the remainder of the free export allowance would roll over to the next day, within a single billing period. For example, a billing period of 31 days would include 31 kWh of free exports between 11:00am and 4:00pm.

3. Tariff structures and charging parameters

The structure, charging parameters and eligibility criteria for the tariffs offered for customers in each of our tariff classes is set out below⁷ with all time periods in local time except the type 7 or 9 metering tariff which will be based on Australian Eastern Standard Time (AEST).

Indicative network tariff rates are provided in [UE RRP ATT TSS.01 - SCS indicative prices - Dec2025 – Public](#).

TABLE 3.1 RESIDENTIAL TARIFFS

Tariff	Tariff code	Status	Supply voltage	Energy /demand threshold	Component	Unit	Charging parameter
Residential Single Rate	LVS1R	Opt-in	<1kV	-	Fixed	c/day	Daily supply charge
					Anytime energy	c/kWh	Charge applied to all energy consumption
Residential Time of Use	URSTOU	Default	<1kV	-	Fixed	c/day	Daily supply charge
					Peak energy	c/kWh	Charge applied to energy consumption between 4pm and 9pm
					Off-peak energy	c/kWh	Charge applied to energy consumption at all other times
					Saver energy	c/kWh	Charge applied to energy consumption between 11am and 4pm
Residential CER	URCER	Opt-in	<1kV	-	Fixed	c/day	Daily supply charge
					Peak import	c/kWh	Charge applied to energy consumption between 4pm and 9pm during the months Dec-Feb and Jun-Aug
					Peak import (Shoulder)	c/kWh	Charge applied to energy consumption between 4pm and 9pm during the shoulder months Mar-May and Sep-Nov
					Peak export credit	c/kWh	Credit applied to export between 4pm and 9pm during the months Dec-Feb and Jun-Aug
					Off-peak import	c/kWh	Charge applied to energy consumption between 9pm and 11am

⁷ During the TSS period, United Energy may need to introduce new tariff codes for billing purposes. Any new tariff codes introduced will comply with the tariff structures outlined in this document for each tariff class and the price level for NUOS services will equate to the tariff type under which the new tariff code has been created.

					Saver import	c/kWh	Charge applied to energy consumption between 11am and 4pm
					Saver export	c/kWh	Charge applied to export seasonally between 11am and 4pm Sep-May with 1kWh per day BEL ⁸
Dedicated circuit	LVEDD	Opt-in	<1kV	-	Anytime energy	c/kWh	Charge applied to energy consumption on the dedicated circuit

TABLE 3.2 SMALL AND MEDIUM BUSINESS TARIFFS

Tariff	Tariff code	Status	Supply voltage	Energy /demand threshold	Component	Unit	Charging parameter
Small Business Single Rate	LVM1R	Opt-in	<1kV	<40MWh p.a.	Fixed	c/day	Daily supply charge
					Anytime energy	c/kWh	Charge applied to all energy consumption
Small Business Time of Use	LVTOU	Default	<1kV	<40MWh p.a.	Fixed	c/day	Daily supply charge
					Peak energy	c/kWh	Charge applied to energy consumption on workdays between 9am and 9pm
					Off-peak energy	c/kWh	Charge applied to energy consumption at all other times
Small Business Demand	LVMKW1R	Opt-in	<1kV	<40MWh p.a.	Fixed	c/day	Daily supply charge
					Anytime energy	c/kWh	Charge applied to all energy consumption
					Summer demand	c/kW/day	Charge applied to the highest 30-minute kW reading between 10am and 6pm on workdays each summer month (Dec-Mar)
					Non-summer demand	c/kW/day	Charge applied to the highest 30-minute kW reading between 10am and 6pm on workdays each non-summer month (Apr-Nov)
Medium Business Demand	UMBD	Default	<1kV	≥40MWh p.a. and ≤160MWh p.a.	Fixed	c/day	Daily supply charge

⁸ Total kWh exempt from export charges are determined by multiplying 1 kWh per day by the number of days in the billing period. If exports between 11:00am and 4:00pm are less than 1 kWh, the remainder of the free export allowance would roll over to the next day, within a single billing period. For example, a billing period of 31 days would include 31 kWh of free exports between 11:00am and 4:00pm.

					Anytime energy	c/kWh	Charge applied to all energy consumption
					Summer demand	c/kWh/day	Charge applied to the highest 30-minute kW reading between 10am and 6pm on workdays each summer month (Dec-Mar)
					Non-summer demand	c/kWh/day	Charge applied to the highest 30-minute kW reading between 10am and 6pm on workdays each non-summer month (Apr-Nov)
Medium Business Opt-out	UMBO	Opt-out	<1kV	≥40MWh p.a. and ≤160MWh p.a.	Fixed	c/day	Daily supply charge
					Peak energy	c/kWh	Charge applied to energy consumption on workdays between 10am and 6pm
					Off-peak energy	c/kWh	Charge applied to energy consumption at all other times
Type 7 or 9 metering	UNMET	Default	<1kV	≤5MWh p.a. (threshold not applicable to public lighting)	Peak energy	c/kWh	Charge applied to energy consumption on weekdays between 7am and 11pm AEST
					Off-peak energy	c/kWh	Charge applied to energy consumption at all other times AEST
Flexible Small	UFS	Default	<1kV	≤240kVA import capacity	Peak import	c/kWh	Charge applied to energy consumption between 4pm and 9pm during the months Dec-Feb and Jun-Aug
					Peak export credit	c/kWh	Credit applied to export between 4pm and 9pm during the months Dec-Feb and Jun-Aug
					Off-peak import	c/kWh	Charge applied to energy consumption outside of peak import times ⁹
					Saver export	c/kWh	Charge applied to export between 11am and 4pm Sep-May with 1kWh per day BEL ¹⁰
					Capacity charge	c/kWh/day	Charge applied to maximum 30-minute kW demand over the most recent rolling 12-months measured at all times

⁹ In figure 9.21 of the explanatory statement the off-peak import charge is split into an off-peak import charge between 9pm and 11am and a saver import charge between 11am and 4pm. Both charges, in accordance with indicative prices, are set to zero.

¹⁰ Total kWh exempt from export charges are determined by multiplying 1 kWh per day by the number of days in the billing period. If exports between 11:00am and 4:00pm are less than 1 kWh, the remainder of the free export allowance would roll over to the next day, within a single billing period. For example, a billing period of 31 days would include 31 kWh of free exports between 11:00am and 4:00pm.

TABLE 3.3 LARGE BUSINESS TARIFFS

Tariff	Tariff code	Status	Supply voltage	Energy /demand threshold	Component	Unit	Charging parameter
Large Low Voltage	LVKVATOU1 / LVKVATOU2 / LVKVATOU3	Default	<1kV	>160MWh p.a.	Peak energy	c/kWh	Charge applied to energy consumption on workdays between 7am and 7pm
					Off-peak energy	c/kWh	Charge applied to energy consumption at all other times
					Rolling demand	c/kVA/ day	Charge applied to the kVA at the 30-minute maximum kW demand over the most recent rolling 12-months measured from 7am-7pm on workdays
					Incentive demand	c/kVA/ day	Charge applied to the kVA at the 30-minute maximum kW demand for the respective months on workdays and measured as follows: Tariffs ending with "1" - measured between 1-4pm in summer (Dec-Mar) Tariffs ending with "2" - measured between 4-7pm in summer (Dec-Mar) Tariffs ending with "3" - measured between 4-7pm in winter (May-Aug)
High Voltage	HVKVATOU1 / HVKVATOU2 / HVKVATOU3	Default	≥1kV <66kV	-	Peak energy	c/kWh	Charge applied to energy consumption on workdays between 7am and 7pm
					Off-peak energy	c/kWh	Charge applied to energy consumption at all other times
					Rolling demand	c/kVA/ day	Charge applied to the kVA at the 30-minute maximum kW demand over the most recent rolling 12-months measured from 7am-7pm on workdays with minimum chargeable demand of 500kVA
					Incentive demand	c/kVA/ day	Charge applied to the to the kVA at the 30-minute maximum kW demand for the respective months on workdays and measured as follows: Tariffs ending with "1" - measured between 1-4pm in summer (Dec-Mar) Tariffs ending with "2" - measured between 4-7pm in summer (Dec-Mar)

							Tariffs ending with "3" - measured between 4-7pm in winter (May-Aug)
Sub-transmission	SUBTKVATOU	Default	≥66kV	-	Peak energy	c/kWh	Charge applied to energy consumption on workdays between 7am and 7pm
					Off-peak energy	c/kWh	Charge applied to energy consumption at all other times
					Rolling demand	c/kVA/day	Charge applied to the kVA at the 30-minute maximum kW demand over the most recent rolling 12-months measured from 7am-7pm on workdays with minimum chargeable demand of 5MVA
Flexible Large	UFL	Default	-	>240kVA and <30MVA import capacity	Peak import	c/kWh	Charge applied to energy consumption between 4pm and 9pm during the months Dec-Feb and Jun-Aug
					Off-peak energy	c/kWh	Charge applied to energy consumption at all other times ¹¹
					Capacity charge	c/kW/day	Charge applied to maximum 30-minute kW demand over the most recent rolling 12-month measured at all times
Flexible TUOS pass-through	UFTUOS	Default	≥66kV	≥30MVA import capacity	Energy charge (import)	\$/MWh	Calculated consistent with the methodology used to calculate United Energy's TUOS energy charges
					Demand charge (import)	\$/kW/month	Calculated consistent with the methodology used to calculate United Energy's TUOS demand charges
					Demand credit (export)	\$/kW/month	Avoided locational TUOS charges calculated consistent with NER clause 5.3AA
					Capacity charge	\$/kVA/month	Charge applied to the import capacity of the connection

3.1 Residential customer tariffs

Dedicated circuit tariff rules

- open to new single-phase connections with a resistive controlled load of less than 30 amps for an approved storage hot water service and/or space heating
- all existing customers on a dedicated circuit tariff will continue to have access to this tariff

¹¹ In figure 9.24 of the explanatory statement the off-peak import charge is split into an off-peak import charge between 9pm and 11am and a saver import charge between 11am and 4pm. Both charges, in accordance with indicative prices, are set to zero.

- dedicated circuit tariffs are closed to new slab heating customers
- this tariff is not offered to customers who have solar or other forms of electricity generation
- approved storage hot water service includes twin and single element storage, electric boosted solar hot water storage, but not heat pump hot water storage or instantaneous hot water storage
- customer must arrange for an electrician at their cost to separately wire the load to the meter board
- customer must have a single phase two element AMI meter, with load contactor installed to support a primary tariff and the dedicated circuit tariff
- if a meter change is required, the customer must pay for the labour cost of installing a new meter
- available only with relevant primary tariffs
- typically the dedicated load will be switched on for 7 hours per day (hot water) and 10 hours per day (slab heating) during times that depend on localised demand management activities which may be during the daytime and/or nighttime
- dedicated controlled load tariffs are charged at off-peak rates regardless of the specific switching times applied by the network
- dedicated circuits have a boost switch on the meter which if pressed allows electricity to be supplied to the dedicated circuit at the prevailing primary tariff rates
- existing slab heating customers have access to off-peak switching between 1pm and 4pm in winter
- typical control load supply may not be met in rare circumstances where this is required to manage network operational requirements. This may include maintaining system security, responding to network constraints, undertaking planned or unplanned maintenance, managing emergency events or due to a significant unplanned outage. Where this occurs, additional controlled load supply time will be provided where practicable to compensate customers for changes in load control timing.

Residential flexible and static export services

We will offer a flexible or static export services to residential solar customers. Flexible and static export residential customers will have the same tariff choices of the single rate, time of use (ToU) or CER tariffs.

3.2 Small and Medium business tariffs

We are introducing two new medium business tariffs for United Energy:

- **Medium business demand** tariff that will become the default tariff for customers consuming $\geq 40\text{MWh}$ and $\leq 160\text{MWh}$ pa with a usage charge that does not vary with the time of day, and a demand charge that reflects the maximum monthly 30-minute demand from 10am to 6pm workdays with rates that vary by season.

- **Medium business opt-out** tariff allows customers consuming $\geq 40\text{MWh}$ and $\leq 160\text{MWh}$ pa to opt out of a demand tariff to the ToU tariff with peak prices from 10am to 6pm workdays, and a low usage charge at all other times.

3.3 Large business tariffs

Large business covers the large low voltage (LLV), high voltage (HV) and sub-transmission (ST) tariff classes.

The following table sets out how the tariff components are calculated for LLV, HV and ST tariffs.

12-month rolling maximum kVA

kVA 30-minute maximum kVA demand is calculated as:

$$\text{kVA} = \text{SQRT}(\text{kW}^2 + \text{kVAr}^2)$$

Where

kW = maximum kWh in a 30-minute period x 2

kVAr = kVAh in the corresponding 30-minute period x 2

Maximum 30-minute kW is measured between 7am and 7pm local time on workdays over the most recent 12 months.

Minimum chargeable demand of 500kVA for high voltage customers and 5,000kVA for sub-transmission customers.

If there is a full 12-month history of the customer's consumption data, the rolling 12-month maximum kVA demand will take effect immediately looking back 12 months.

Demand for greenfield sites will be measured monthly from the energisation date through the bill end date. This approach will remain in place until 12 months of consumption history is available, after which demand will be calculated on a rolling 12-month basis. If the monthly measured demand falls below the minimum chargeable demand, the minimum will apply until the measured demand exceeds that threshold.

Incentive kVA

Incentive kVA is the maximum monthly 30-minute kVA for each of four months of the year. There is no charge for the other eight months of the year.

Each customer will be assigned to one of the following measurement periods:

- 1-4pm local time workdays in summer (Dec-Mar), or
- 4-7pm local time workdays in summer (Dec-Mar), or
- 4-7pm local time workdays in winter (May-Aug).

30-minute maximum kVA demand in the measurement period is calculated as:

$$\text{kVA} = \text{SQRT}(\text{kW}^2 + \text{kVAr}^2)$$

where

$kW = \text{maximum kWh in a 30-minute period in the assigned measurement period} \times 2$

$kVAr = \text{kVArh in the corresponding 30-minute period} \times 2$

Incentive demand is not applicable to Sub-transmission customers.

Peak and off-peak usage

Peak usage is kWh usage between 7am and 7pm local time on workdays.

Off-peak usage is kWh usage at all other times.

Demand exclusions

The exclusion of temporary increases in demand from the 12-month rolling maximum demand charged to the customer at a supply point will be considered at our discretion. For example, if there is a specific short-term need, such as commissioning a new plant. The customer must apply via their retailer in advance for a temporary increase in demand to be excluded from the supply point's 12-month rolling maximum demand charge.

Demand reset criteria

A 12-month rolling demand reset may be granted under the following circumstances:

- Install power factor correction (PFC) equipment and supply a copy of the Certificate of Electrical Safety (CES) to confirm the installation. If granted, demand will be measured from the date of commissioning of the PFC equipment.
- If PFC has not been installed, provide evidence of what the customer has changed on site to permanently alter the load/usage, for instance, removal of equipment. Evidence may be in the form of a CES detailing the works performed, technical information and/or photographic evidence to demonstrate the site changes.
- Customers that have moved into a premise will automatically continue to have their maximum demand charge based on the 12-month rolling maximum demand. A customer will need to lodge an application for their demand to be measured from the date they occupied the premises.
- NMI disaggregation where there is clear evidence of changes to the load characteristics of one or both of the affected NMIs.

Criteria to move away from large business tariff

Sites must have a minimum of 15 months of consumption data available. We require that consumption values consistently remain below the average daily load threshold of 160 MWh per annum for a minimum period of 3 months prior to submitting a request to move away from a large business tariff. All sites will be reviewed annually to ensure the tariff remains suitable for the site's usage profile. If a site is reverted to a large business tariff this may impact future requests to move.

3.4 Trial tariffs for the first year of the regulatory period

We will introduce a kerbside electric vehicle charging (KEVC) trial tariff on 1 July 2026.

Eligibility criteria:

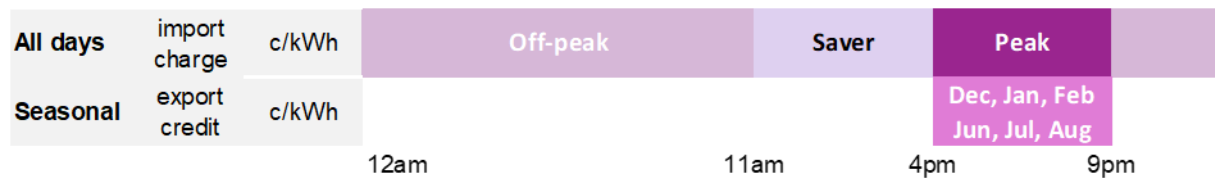
- Dedicated charger with supply capacity up to 44 kW with its own NMI

- The trial tariff will be available irrespective of KEVC ownership or meter type

The KEVC trial tariff will commence on 1 July 2026 and run for three years. If the trial tariff is deemed successful, then it will be extended for a further two years.

Figure 2 shows the KEVC trial network tariff structure. The tariff will have no fixed charge.

FIGURE 2 KEVC TRIAL TARIFF STRUCTURE



Attachment UE RRP ATT TSS 03 – Kerbside EV charger trial tariff notification – Dec2025 – Public provides a sub-threshold tariff notification for the KEVC trial tariff that is new in FY2027.

4. Tariff assignment

This section outlines the tariff assignment and re-assignment criteria to apply to retail customers for standard control services over the 2026 to 2031 period.

4.1 Residential customers

We will assign the following customers onto the new ToU tariff:

- new connections (i.e. new homes connecting to the network for the first time, not re-energisations)
- customers who choose to upgrade from single-phase to multi-phase supply
- customers who choose to install or upgrade PV solar or batteries
- home with an electric vehicle charger above 3.6kW
- customers on demand, ToU and daytime saver trial tariffs¹² as of 30 June 2026

Any customer with an AMI meter can opt into the ToU tariff or CER tariff. Customers can opt out of the ToU tariff or CER tariff to the single rate tariff. Once an electric vehicle register or other formal means of identification is available, customers with an electric vehicle charger above 3.6kW will not be able to access the single rate tariff.

A secondary dedicated circuit tariff is available for eligible load.

The following table summarises all the residential tariffs and assignment options.

TABLE 4.1 RESIDENTIAL TARIFFS

TARIFF	ASSIGNMENT	TARIFF OPTIONS ¹³
ToU	New connections Supply upgrades to multi-phase Households installing or upgrading PV solar or battery Existing demand tariff, ToU tariff and daytime saver trial tariff customers Home with an electric vehicle charger above 3.6 kW	Single rate or CER
Single rate	All existing customers remain	ToU or CER
CER	Opt-in	ToU or single rate
Dedicated circuit	All existing customers remain	Any new eligible load

¹² Existing demand tariff, ToU tariff and daytime saver trial tariff will be closed

¹³ Homes with an electric vehicle charger above 3.6 kW cannot opt into the single rate tariff

4.2 Small and medium businesses

This tariff class comprises:

- small businesses consuming less than 40 MWh per year
- medium businesses consuming more than 40 MWh but less than or equal to 160 MWh per year
- NMI's with Type 7 or 9 metering
- flexible small customers

Small business

We will assign the following small business customers onto our existing ToU tariff:

- new connections (i.e. new small businesses connecting to the network for the first time, not re-energisations)
- customers who choose to upgrade from single-phase to multi-phase supply
- customers who choose to install or upgrade PV solar or batteries
- a small business with an electric vehicle charger greater than 3.6kW.

The following table summarises all the small business tariffs and assignment options

TABLE 4.2 SMALL BUSINESS

TARIFF	ASSIGNMENT	TARIFF OPTIONS ¹⁴
ToU	New connections Supply upgrades to multi-phase Businesses installing or upgrading PV solar or battery Business with an electric vehicle charger above 3.6kW	Single rate or demand
Single rate	All existing customers remain	ToU or demand
Demand	All existing customers remain	ToU or single rate
Dedicated circuit	All existing customers remain	Any new eligible load

Medium business

Any new medium business customer will be assigned to the demand tariff which comprises a seasonal demand charge and a flat usage charge. Medium businesses can opt out of the demand tariff to the medium business opt-out tariff with no demand charge.

¹⁴ Businesses with an electric vehicle charger above 3.6 kW cannot opt into the single rate tariff

We will re-assign small business demand customers as of 30 June 2026 onto the medium business demand tariff with effective date 1 July 2026.

We will assign small business ToU customers as of 30 June 2026 onto the medium business opt-out tariff with effective date 1 July 2026.

TABLE 4.3 MEDIUM BUSINESS

TARIFF	ASSIGNMENT	TARIFF OPTIONS
Demand	New connections	Opt-out
Opt-out	Opt-in	Demand
Dedicated circuit	All existing customers remain	Any new eligible load

Type 7 or 9 metering

We propose the following assignment criteria for the type 7 or 9 metering tariff:

- All public lighting
- All type 7 metered loads
- Type 9 metered loads up to 5 MWh pa.

Customers who don't satisfy the criteria for the type 7 or 9 metering tariff would be assigned to the appropriate tariff. Table show the assignment criteria for non-public lighting type 9 metered loads.

TABLE 4.4 TYPE 9 METERING THAT ARE NOT PUBLIC LIGHTING

ANNUAL CONSUMPTION	NETWORK TARIFF
≤5 MWh pa	Type 7 or 9 metering
>5 MWh pa and <40 MWh pa	Small business ToU
≥40 MWh pa and ≤160 MWh pa	Medium business demand
>160 MWh pa	Large low voltage

We will continue to charge a two-rate ToU tariff with a 7am to 11pm weekdays peak period, in Australian Eastern Standard Time (AEST).

Flexible small tariff

Discussed in section 4.4.

4.3 Large business

Large low voltage, high voltage and sub-transmission connections can only be assigned to a single tariff unless they are a flexible connection.

The incentive demand charge applies to large low voltage and high voltage customers, but not to sub-transmission customers.

No large business customers will be assigned to the winter incentive demand period in the first year of the regulatory period.

New Customers Connected to Winter Peaking Zone Substations

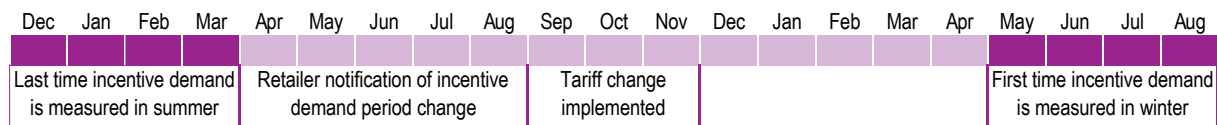
- New customers connected to winter peaking zone substations will be assigned the applicable incentive demand period at the time of their connection.

Future Adjustments for Existing Customers

- Should a zone substation clearly become winter peaking within the regulatory period then customers connected to that zone substation will be moved to winter incentive demand period. The timing for this change is shown in Figure 2.

Figure 2 below demonstrates that existing customer who are moved to new winter incentive demand would receive a small benefit as the incentive demand would be deferred by six months. The customer would receive notification about the change at least eight months prior to the first winter demand period.

FIGURE 2 TIMING OF INCENTIVE DEMAND PERIOD CHANGE TO WINTER



4.4 Flexible connections

Flexible connection is defined as import and/or export management actioned through connection agreements such as an agreement to be connected to and potentially controlled by our systems or an agreement to limit imports and/or exports under certain network conditions.

Any battery or stand-alone generation connection will be deemed to be a flexible connection. It may also include loads combined with storage such as EV charging combined with a battery, and other flexible loads such as hydrogen production facilities and electro-thermal energy storage but they must have an agreement with us that gives us a level of direct or indirect control over their connection. Flexible tariffs are not intended to be available to residential or business sites with solar that can export to the grid.

Connection arrangements are evolving and becoming more tailored to accommodate new technologies. Therefore, we will retain some discretion about eligibility for flexible tariffs.

Small flexible connections with an import capacity of up to 240 kVA will be assigned to the flexible small tariff.

Large flexible connections with an import capacity greater than 240 KVA and less than 30 MVA capacity will be assigned to the flexible large tariff.

Flexible connections with an import capacity greater than or equal to 30 MVA will be assigned to the flexible TUOS pass through tariff.

Flexible connections are subject to the same network tariffs irrespective of ownership. Therefore, distributor owned flexible connections would be assigned the same network tariff as any other flexible connection.

We will assign the following customers onto a flexible small tariff from 1 July 2026:

- Community battery ToU trial tariff customers
- Distributor LV battery trial tariff customers
- Pole-top battery trial tariff customers

We will assign the following existing customers onto the flexible large tariff from 1 July 2026:

- Generator storage trial tariff customers

Customers on a flexible tariff can opt out to the tariff that would have applied had they not been classified as a flexible connection.

5. Export tariff transition strategy

5.1 Rules requirements

The recent amendment to the Access and Pricing rules by the Australian Energy Market Commission (AEMC), which removed the prohibition on export charges, enables distribution networks to enhance pricing efficiency by signalling the costs associated with both consumption and export services to customers utilising these services.

Clause 6.18.1A(a)(2A) of the Rules requires Distribution Network Service Providers to describe the strategy or strategies adopted for the introduction of export tariffs including, where relevant, the period of transition (export tariff transition strategy).

5.2 Overview of export tariffs and strategy

The Victorian distribution businesses have worked together to consult with customers and other stakeholders on the introduction of export tariffs.

In developing our export tariff strategy, the Victorian distribution businesses considered the following factors:

- the capacity of CER is projected to grow substantially by 2035
- inadequate integration of CER could increase costs for all customers by necessitating network upgrades, driving higher peak demand, or undermining grid stability due to low minimum demand
- minimum demand challenges could also trigger the mandatory shutdown of exports through emergency backstop mechanisms.

The Victorian Government is strongly opposed to mandatory export charges and therefore we have not considered mandatory export pricing. Instead, we are introducing two-way tariffs which are not mandatory.

After engaging with customers and other stakeholders to explore various options, the Victorian distribution businesses propose a new CER tariff that includes an export charge and reward.

In addition, we also propose a new flexible connection tariff with export charges.

We plan to implement the following:

- a new solar soak / saver period from 11am to 4pm into our residential ToU tariff which is initially priced at around 1 c/kWh to encourage more consumption during this period when solar exports are at their greatest
- an opt-in two-way residential CER tariff focussed on flexible import/export devices such as home batteries and EVs with vehicle-to-grid capability. This tariff charges for exports from 11am to 4pm in the non-winter months. A residential customer can opt into or out of the CER tariff
- a flexible connection tariff with export charges from 11am to 4pm in the non-winter months. This tariff is targeted at flexible connections such as community batteries on the LV network which are likely to be co-located with residential customers with solar exports. Eligible flexible connections will by default be assigned to a two-way tariff, but they will have the option to

revert to the tariff that would have applied had they not been classified as a flexible connection.

5.3 Basic export level

The NER requires us to apply a basic export level (BEL) for export charges which defines the amount of electricity a customer can export to the grid without incurring a cost. Since our proposed CER and flexible small tariffs have an export charge, we need to apply a BEL to these charges.

The AER's Export Tariff Guidelines state that in developing the methodology for determining basic export levels, distributors should balance efficiency, complexity, understandability, fairness and equity.

We proposed that the BEL for the residential CER tariff be set to the lowest level practical of 1 kWh per day during the saver period for the non-winter months when export charges apply. This proposal considers and balances all of the above, and the key reason for proposing this BEL is:

- the residential CER tariff is opt-in and has been demonstrated to be attractive to customers with home batteries which are operated to respond to network price signals even with a low BEL
- a higher BEL would reduce the disincentive to export in the middle of the day
- a 1 kWh per day BEL was supported by stakeholders.

Our explanatory statement explains in more detail how we have taken into account considerations set out in the AER's Export Tariff Guidelines in deciding on a BEL of 1 kWh per day.

6. Alternative control services

United Energy offers three categories of alternative control services: public lighting services, metering services and ancillary network services. Each of these categories constitutes its own tariff class and is governed by distinct pricing mechanisms separate from standard control service network tariffs. Public lighting services and ancillary network services are regulated under a price cap and metering services have revenue cap form of price control.

Our alternative control service prices represent the efficient costs of delivering each service. The charges for alternative control services are provided in [UE RRP ATT TSS.02 - ACS indicative prices - Dec2025 - Public](#).

6.1 Public lighting

We provide public lighting services for local councils and Victorian Department of Transport and Planning. The provision of public lighting services and the respective obligations of our business and public lighting customers are regulated by the Victorian Public Lighting Code. The following services are included:

- operation of public lighting assets; including handling enquiries and complaints about public lighting and dispatching crews to repair public lighting assets
- maintenance, repair and replacement of public lighting assets.

The cost of these services is charged to customers through an operation, maintenance, repair and replacement (OM&R) charge per each light.

We have also introduced an accelerated replacement charge to cover the incremental cost of the accelerated rollout of non-LEDs by 30 June 2031. This charge will be applied from the date that a non-LED is replaced until 30 June 2031.

All other public lighting services are treated as quoted.

6.2 Ancillary network services

Ancillary network services are non-routine types of services which are provided to individual customers on request. Ancillary network services are divided into two subclasses:

- Fixed fee is applied to ancillary network services that involve relatively consistent and standardised activities, where the associated costs and required level of effort are generally comparable.
- Quoted fee is applied to ancillary network services where delivery time can vary significantly due to the size and complexity of the work involved. These services, often tailored to a specific customer's request, are charged on a time-and-materials basis. The cost is calculated using the estimated time required to complete the activity and the applicable hourly labour rates, plus pass through of any other costs.

6.3 Metering services

We are responsible for metering coordinator services associated with types 5, 6 and 7 meters which are installed in residential and small commercial premises consuming up to 160 MWh per annum. The services provided in relation to these meters include:

- meter provision—includes purchasing meters and installing these meters at the customer's premise
- meter maintenance—includes inspecting, testing, maintaining and repairing meters
- meter replacement—replacement of a meter and associated equipment, at a site with existing metering infrastructure, with a modern equivalent where the meter has reached the end of its economic life
- meter reading and data services—includes collection, processing, storage and delivery of metering data to other participants for billing and market settlement purposes and the management of the relevant NMI
- meter communications—includes maintaining and installing communication devices required to operate the mesh radio network and management of the day-to-day operation of the meter communications systems including meter data delivery, testing, fault detection, investigation and resolution.

7. Compliance checklist

This TSS is a NER requirement. The table below sets out the NER and other requirements relevant to this TSS and the section in which those requirements have been met.

RULE PROVISION	REQUIREMENT(S)	RELEVANT SECTION OF SUBMISSION
Part E: Regulatory proposal and proposed tariff structure statement		
6.8.2	Submission of regulatory proposal, tariff structure statement and exemption application	
6.8.2(a)	A Distribution Network Service Provider must, whenever required to do so under paragraph (b), submit to the AER a regulatory proposal and a proposed tariff structure statement related to the distribution services provided by means of, or in connection with, the Distribution Network Service Provider's distribution system.	This was submitted to the AER in January 2025, and this document is the revised proposed TSS
6.8.2(b)	A regulatory proposal, a proposed tariff structure statement and, if required under paragraph (a1), an exemption application must be submitted: (1) at least 17 months before the expiry of a distribution determination that applies to the Distribution Network Service Provider; or (2) if no distribution determination applies to the Distribution Network Service Provider, within 3 months after being required to do so by the AER.	This was submitted to the AER in January 2025, and this document is the revised proposed TSS
6.8.2(c)(7)	A description (with supporting materials) of how the proposed tariff structure statement complies with the pricing principles for direct control services including: (i) a description of where there has been any departure from the pricing principles set out in paragraphs 6.18.5(e) to (g); and (ii) an explanation of how that departure complies with clause 6.18.5(c).	Chapter 3 of this document and the TSS Explanatory Statement. We have not departed from the pricing principles
6.8.2(c1)	The regulatory proposal must be accompanied by an overview paper in reasonably plain language which includes each of the following matters: (1) a summary to explain: the proposed tariff structure statement including the export tariff transition strategy; the interrelationship between the proposed tariff structure statement and relevant elements of the regulatory proposal (including the proposed connection policy and capital expenditure or operating expenditure); (2) a description of: how the Distribution Network Service Provider has engaged with relevant stakeholders including distribution service end users or groups representing them and (in relation to the tariff structure statement) retailers and Market Small Generation Aggregators in developing the regulatory proposal and the proposed tariff structure statement including the export tariff transition strategy;	Regulatory proposal - part A was submitted in January 2025

	<p>the relevant concerns identified as a result of that engagement; and</p> <p>how the Distribution Network Service Provider has sought to address those concerns;</p> <p>(3) a summary to explain the Distribution Network Service Provider's approach to identifying demand for, and where relevant providing for, distribution services for supply into the distribution network from micro embedded generators and non-registered embedded generators;</p> <p>(4) a summary of other approaches considered by the Distribution Network Service Provider in deciding on the approach referred to in subparagraph (3), including relevant proposals from distribution service end users, and how they compare to the approach referred to in subparagraph (3);</p> <p>(5) a description of the key risks and benefits for distribution service end users of the regulatory proposal and the proposed tariff structure statement including the export tariff transition strategy;</p> <p>(6) a comparison of the Distribution Network Service Provider's proposed total revenue requirement with its total revenue requirement for the current regulatory control period and an explanation for any material differences between the two amounts; and</p> <p>(7) a comparison of the Distribution Network Service Provider's proposed capital expenditure to support the provision of distribution services for supply into the distribution network from micro embedded generators and non-registered embedded generators for the current regulatory control period and its actual or committed capital expenditure in the current regulatory control period for that purpose and an explanation for any material differences between the two amounts.</p>	
6.8.2(d1)	The proposed tariff structure statement must be accompanied by an indicative pricing schedule.	<p>Attachments:</p> <p>UE RRP ATT TSS.01 - SCS indicative prices - Dec2025 - Public</p> <p>UE RRP ATT TSS.02 - ACS indicative prices - Dec2025 - Public</p>
6.8.2(d2)	The proposed tariff structure statement must comply with the pricing principles for direct control services.	Chapter 3 of this document and the TSS Explanatory Statement
6.8.2(e)	If more than one distribution system is owned, controlled or operated by a Distribution Network Service Provider, then, unless the AER otherwise determines, a separate tariff structure statement are to be submitted for each distribution system.	Not applicable
6.8.2(f)	If, at the commencement of this Chapter, different parts of the same distribution system were separately regulated, then, unless the AER otherwise determines, a separate regulatory proposal and a separate tariff structure statement are to be submitted for each part as if it were a separate distribution system.	Not applicable
6.18.1A	Tariff structure statement	

6.18.1A(a)(1)	A tariff structure statement must include the tariff classes into which retail customers for direct control services will be divided during the relevant regulatory control period.	This TSS Chapter 2
6.18.1A(a)(2)	A tariff structure statement must include the policies and procedures the Distribution Network Service Provider will apply for assigning retail customers to tariffs or reassigning retail customers from one tariff to another (including any applicable restrictions).	This TSS Chapter 2
6.18.1A(a)(2A)	A tariff structure statement must include a description of the strategy or strategies the Distribution Network Service Provider has adopted, taking into account the pricing principle in clause 6.18.5(h), for the introduction of export tariffs including where relevant the period of transition (export tariff transition strategy);	This TSS Chapter 4 and 6
6.18.1A(a)(3)	A tariff structure statement must include the structures for each proposed tariff.	This TSS Chapter 4
6.18.1A(a)(4)	A tariff structure statement must include the charging parameters for each proposed tariff.	This TSS Chapter 4
6.18.1A(a)(5)	A tariff structure statement must include a description of the approach that the Distribution Network Service Provider will take in setting each tariff in each pricing proposal during the relevant regulatory control period in accordance with clause 6.18.5 (pricing principles).	This TSS Chapter 3
6.18.1A(b)	A tariff structure statement must comply with the pricing principles for direct control services.	This TSS Chapter 3
6.18.1A(e)	A tariff structure statement must be accompanied by an indicative pricing schedule which sets out, for each tariff for each regulatory year of the regulatory control period, the indicative price levels determined in accordance with the tariff structure statement.	Attachments: UE RRP ATT TSS.01 - SCS indicative prices - Dec2025 - Public UE RRP ATT TSS.02 - ACS indicative prices - Dec2025 - Public
6.18.3	Tariff Classes	
6.18.3(b)	Each customer for direct control services must be a member of 1 or more tariff classes.	This TSS Chapter 2 and 7
6.18.3(c)	Separate tariff classes must be constituted for retail customers to whom standard control services are supplied and retail customers to whom alternative control services are supplied (but a customer for both standard control services and alternative control services may be a member of 2 or more tariff classes).	This TSS Chapter 2 and 7
6.18.3(d)	A tariff class must be constituted with regard to: 1. the need to group retail customers together on an economically efficient basis; and 2. the need to avoid unnecessary transaction costs.	This TSS Chapter 2 and 7
6.18.4	Principles governing assignment or re-assignment of retail customers to tariff classes and assessment and review of basis of charging	
6.18.4(a)(1)	retail customers should be assigned to tariff classes on the basis of one or more of the following factors:	This TSS Chapter 2 and 5

	<p>i) the nature and extent of their usage or intended usage of distribution services;</p> <p>ii) the nature of their connection to the network;</p> <p>iii) whether remotely-read interval metering or other similar metering technology has been installed at the retail customer's premises as a result of a regulatory obligation or requirement.</p>	
6.18.4(a)(2)	retail customers with a similar connection and distribution usage profile should be treated on an equal basis,	This TSS Chapter 2 and 5
6.18.4(a)(4)	<p>a Distribution Network Service Provider's decision to assign a customer to a particular tariff class, or to re-assign a customer from one tariff class to another should be subject to an effective system of assessment and review.</p> <p>Note: If (for example) a customer is assigned (or reassigned) to a tariff class on the basis of the customer's actual or assumed maximum demand, the system of assessment and review should allow for the reassignment of a customer who demonstrates a reduction or increase in maximum demand to a tariff class that is more appropriate to the customer's load profile.</p>	This TSS Chapter 2
6.18.4(b)	If the charging parameters for a particular tariff result in a basis of charge that varies according to the distribution service usage or load profile of the customer, a distribution determination must contain provisions for an effective system of assessment and review of the basis on which a customer is charged.	This TSS Chapter 2 and 5
6.18.5	Pricing Principles	
6.18.5(a)	<p><i>Network pricing objective</i></p> <p>The network pricing objective is that the tariffs that a Distribution Network Service Provider charges in respect of its provision of direct control services to a retail customer should reflect the Distribution Network Service Provider's efficient costs of providing those services to the retail customer.</p> <p>Note: Charges in respect of the provision of direct control services may reflect efficient negative costs.</p>	Proposed charges don't exceed smoothed revenue
6.18.5(b)	<p><i>Application of the pricing principles</i></p> <p>Subject to paragraph 6.18.5(c), a Distribution Network Service Provider's tariffs must comply with the pricing principles set out in paragraphs (e) to (j).</p>	This TSS Chapter 3
6.18.5(c)	A Distribution Network Service Provider's tariffs may vary from tariffs which would result from complying with the pricing principles set out in paragraphs (e) to (g) only: (1) to the extent permitted under paragraph (h); and (2) to the extent necessary to give effect to the pricing principles set out in paragraphs (i) to (j).	Noted
6.18.5(d)	A Distribution Network Service Provider must comply with paragraph (b) in a manner that will contribute to the achievement of the network pricing objective.	This TSS Chapter 3
6.18.5(e)	<p><i>Pricing Principles</i></p> <p>For each tariff class, the revenue expected to be recovered must lie on or between:</p> <p>(1) an upper bound representing the stand alone cost of serving the retail customers who belong to that class; and</p> <p>(2) a lower bound representing the avoidable cost of not serving those retail customers.</p>	This TSS Chapter 3

6.18.5(f)	<p>Each tariff must be based on the long run marginal cost of providing the service to which it relates to the retail customers assigned to that tariff with the method of calculating such cost and the manner in which that method is applied to be determined having regard to:</p> <ol style="list-style-type: none"> (1) the costs and benefits associated with calculating, implementing and applying that method as proposed; (2) the additional costs likely to be associated with meeting demand from retail customers that are assigned to that tariff at times of greatest utilisation of the relevant service; and (3) the location of retail customers that are assigned to that tariff and the extent to which costs vary between different locations in the distribution network. 	This TSS Chapter 3 and TSS Explanatory Statement section 7.7
6.18.5(g)	<p>The revenue expected to be recovered from each tariff must:</p> <ol style="list-style-type: none"> (1) reflect the Distribution Network Service Provider's total efficient costs of serving the retail customers that are assigned to that tariff; (2) when summed with the revenue expected to be received from all other tariffs, permit the Distribution Network Service Provider to recover the expected revenue for the relevant services in accordance with the applicable distribution determination for the Distribution Network Service Provider; and (3) comply with sub-paragraphs (1) and (2) in a way that minimises distortions to the price signals for efficient usage of the relevant service that would result from tariffs that comply with the pricing principle set out in paragraph (f). 	This TSS Chapter 3
6.18.5(h)	<p>A Distribution Network Service Provider must consider the impact on retail customers of changes in tariffs from the previous regulatory year and may vary tariffs from those that comply with paragraphs (e) to (g) to the extent the Distribution Network Service Provider considers reasonably necessary having regard to:</p> <ol style="list-style-type: none"> (1) the desirability for tariffs to comply with the pricing principles referred to in paragraphs (f) and (g), albeit after a reasonable period of transition (which may extend over more than one regulatory control period); (2) the extent to which retail customers can choose the tariff to which they are assigned; and (3) the extent to which retail customers are able to mitigate the impact of changes in tariffs through their decisions about usage of services. 	TSS Explanatory Statement
6.18.5(i)	<p>The structure of each tariff must be reasonably capable of:</p> <ol style="list-style-type: none"> (1) being understood by retail customers that are or may be assigned to that tariff (including in relation to how decisions about usage of services or controls may affect the amounts paid by those customers) or (2) being directly or indirectly incorporated by retailers or Market Small Generation Aggregators in contract terms offered to those customers, having regard to information available to the Distribution Network Service Provider, which may include: (3) the type and nature of those retail customers; (4) the information provided to, and the consultation undertaken with, those retail customers; and (5) the information provided by, and consultation undertaken with, retailers and Market Small Generation Aggregators. 	This TSS Chapter 3 and 4 TSS Explanatory Statement
6.18.5(j)	A tariff must comply with the NER and all applicable regulatory instruments.	Demonstrated by this table

11.141.13	Basic export levels to be specified in tariff structure statements	
11.141.13(a)(1)	For the purposes of new clause 6.18.1A(a), a tariff structure statement of a Distribution Network Service Provider that will apply during the tariff transition period for the Distribution Network Service Provider must include, in addition to the elements in new clause 6.18.1A(a): (1) for each proposed export tariff, the basic export level or the manner in which the basic export level will be determined; and (2) the eligibility conditions applicable to each proposed export tariff.	This TSS Chapter 3 and 5
11.143.13(b)(1)	basic export levels must be set having regard to: (i) the capacity of a distribution network (or part of a distribution network) to accept supply from distribution connected units to the extent the AER considers that the capacity arises from the provision of distribution services for supply to retail customers in that distribution network (or part) with minimal or no further investment; and (ii) forecast use of distribution services relating to supply from distribution connected units in the distribution network (or relevant part)	TSS Explanatory Statement Section 7.1
11.143.13(b)(2)	a basic export level may be specified by reference to any one or more of the following measures: (i) the capacity to supply into the distribution network at a connection point; (ii) the quantity of supply into the distribution network at a connection point; or (iii) any other measure the Distribution Network Service Provider is authorised to apply by the applicable distribution determination;	Basic export level has been specified based on quantity of supply (kWh)
AMI Tariff Order Clause 10	Distributor must provide a choice of AMI network tariff The tariffs for each tariff class included by a distributor in a tariff structure statement, where the customers of that tariff class may include a domestic customer with advanced metering infrastructure, must include at least: (a) one flat rate network tariff; and (b) one TOU network tariff	We offer these two tariff structures
AMI Tariff Order Clause 11	Distributor must provide at least one AMI network tariff that is not a demand network tariff The tariffs for each tariff class included by a distributor in a tariff structure statement, where the customers of that class may include a medium customer, must include at least one AMI network tariff that is not a demand network tariff.	We offer medium business customers a tariff that is not a demand tariff
AMI Tariff Oder Clause 12	Assignment of network tariffs for a dedicated charger (1) A distributor must not assign a flat rate network tariff to a small customer if the distributor is aware (including by an electric powered passenger car register or other formal means of identification that becomes available) that at least part of the electricity taken at the small customer's supply point is for use by a dedicated charger. (2) If a distributor becomes aware that electricity taken at a supply point for a small customer that has been assigned a flat rate network tariff is for use by a dedicated charger, the distributor must reassign that customer to a TOU network tariff. Dedicated charger means a dedicated charger for an electric powered passenger car with a specified capacity or charging rate of 3.6kW or greater;	These provisions are included in this document

AMI Tariff Order Clause 13(1)	If a retailer receives: (a) a notice from a small customer in accordance with clause 8; or (b) a medium customer notice in accordance with clause 9, the retailer may direct a distributor to assign to that small customer or medium customer to an open tariff that is not a demand network tariff.	We offer non-demand tariffs to both small and medium business customers
----------------------------------	---	---



For further information visit:

 Unitedenergy.com.au

 United Energy

 United Energy

 United Energy