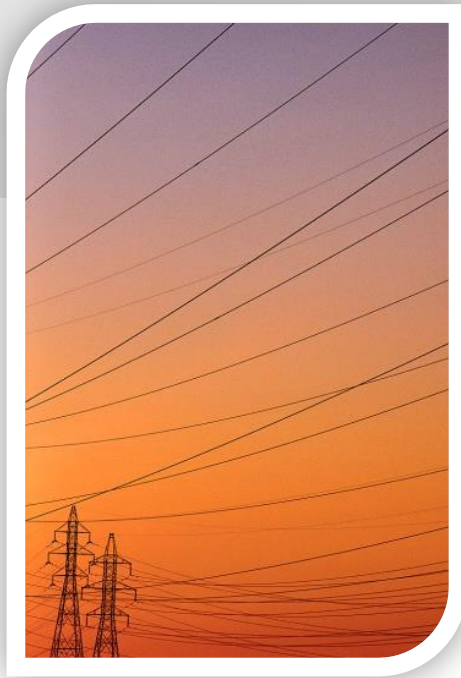


Vic. electricity distribution pricing review – Public Forum

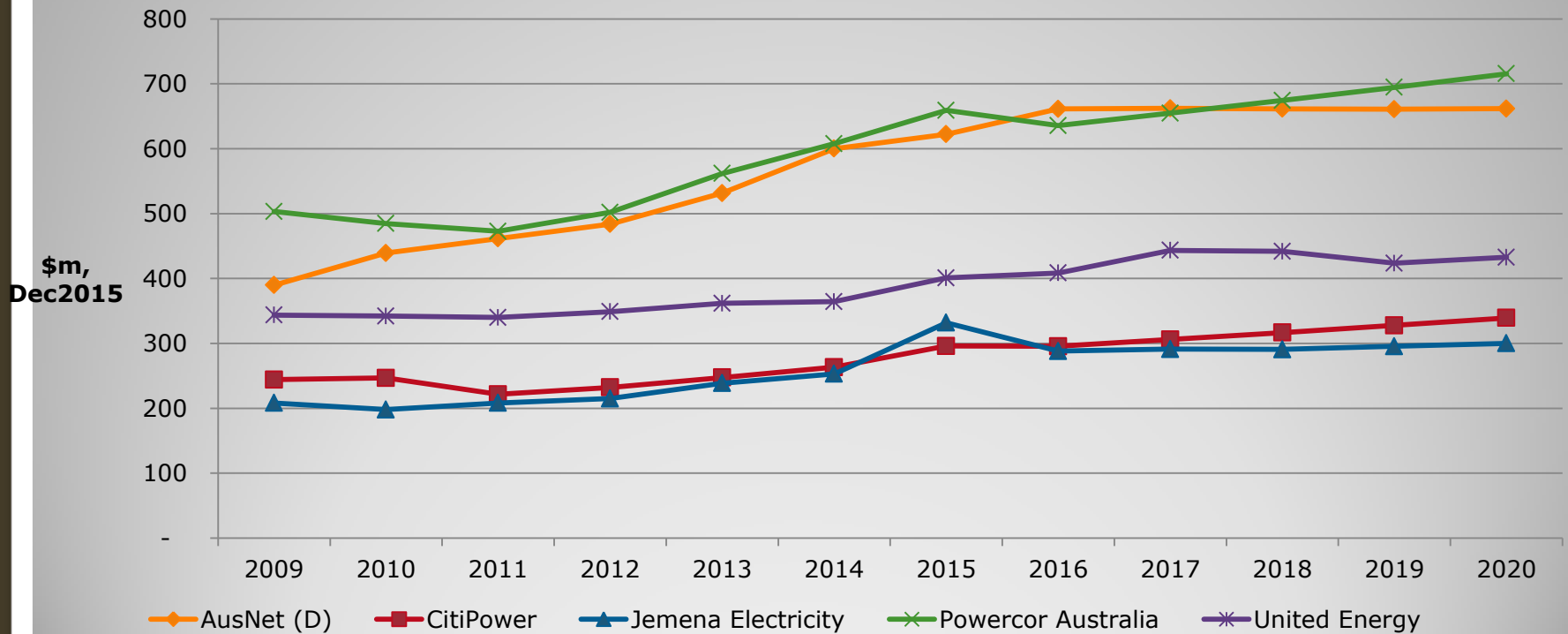


Process timeline

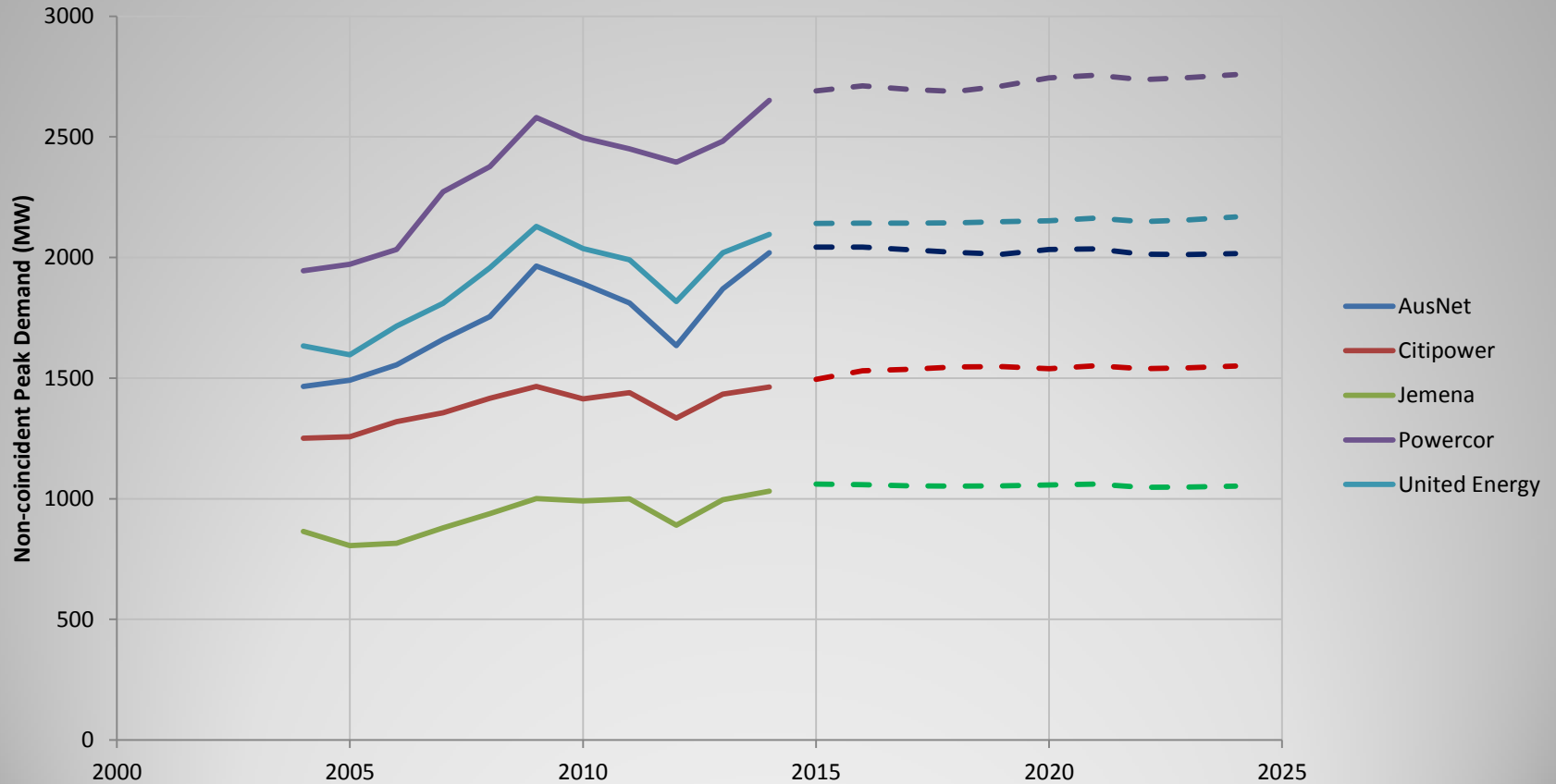
- Initial submissions – 13 July 2015
- Preliminary determinations – 21 October
- Submissions on preliminaries – 6 January
- Revised proposals – 6 January
- Further submissions – 4 February
- Final determinations – 29 April 2016

Proposed revenue

Standard Control revenue by DNSP

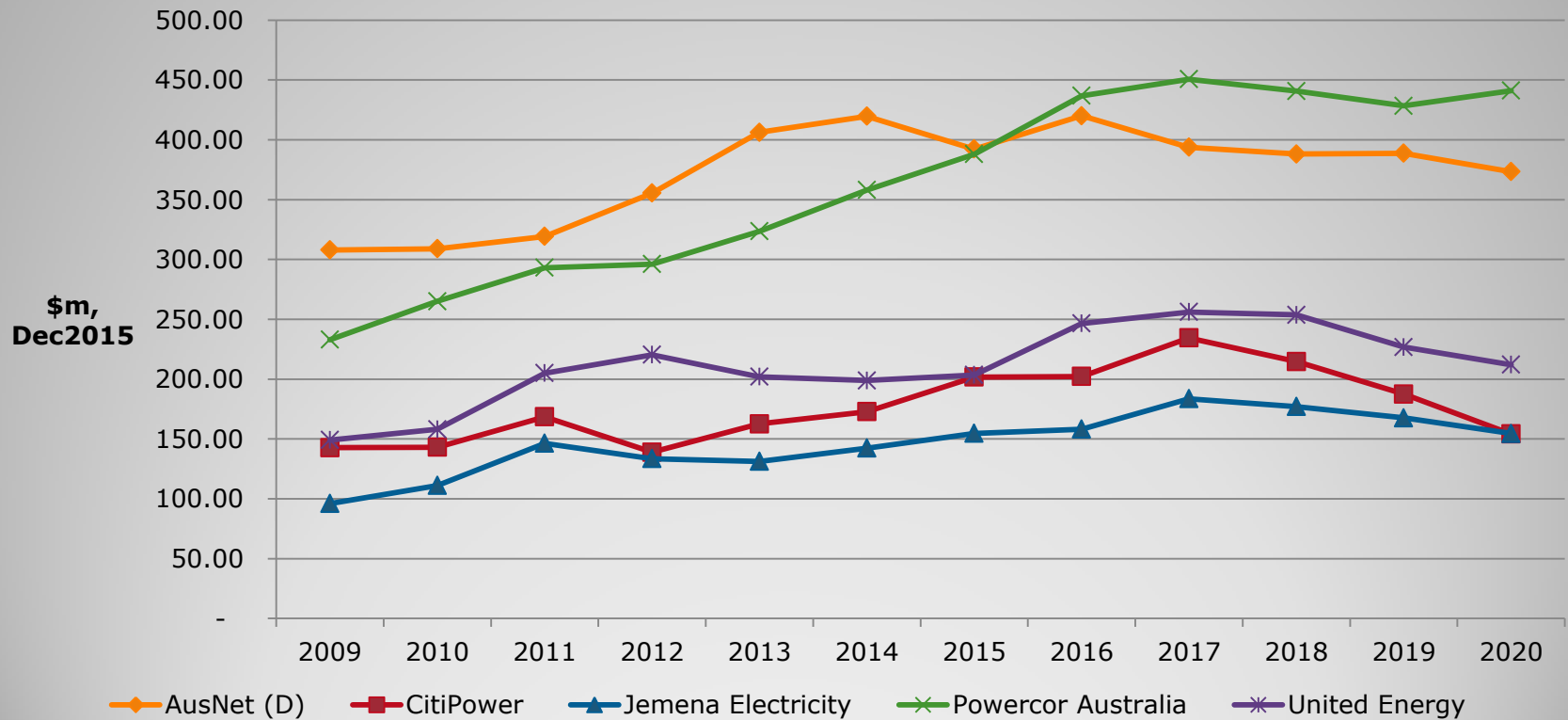


AEMO forecast - peak demand



Capex increasing in 2016-20

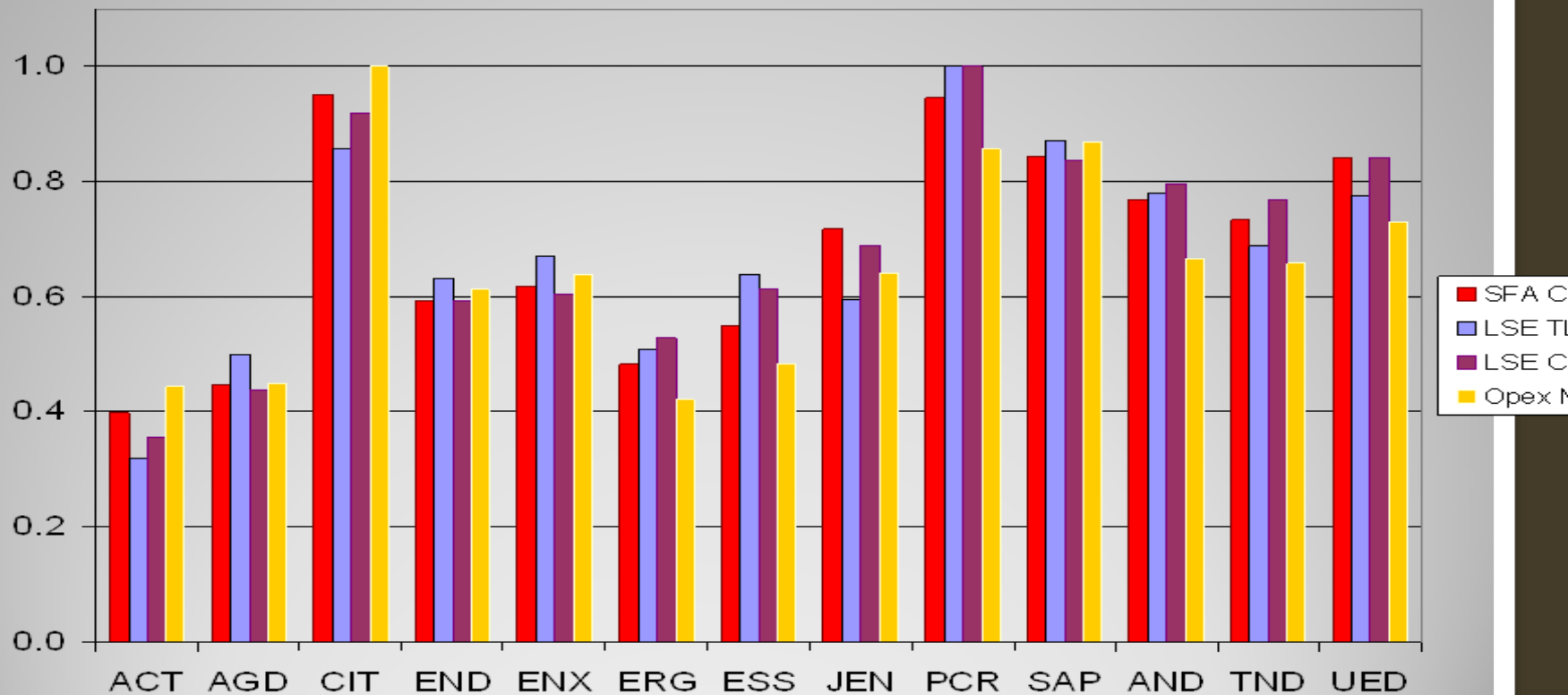
Total capex



Opex increasing but ...

- Service re-classifications and capitalisation policy
- Still, there are some significant step changes, etc
- No productivity growth in sector?

Efficient service providers



Rate of return proposals

	AusNet Services	CitiPower	Jemena	Powercor	United Energy
Overall WACC (per cent)	7.19	7.20	7.18	7.20	7.38
Return on equity (post-tax nominal) (per cent)	9.90	9.90	9.87	9.90	9.95
Return on debt (pre-tax nominal) (per cent)	5.39	5.39	5.39	5.39	5.67

Rate of return proposals

	Ausgrid	Endeavour Energy	Essential Energy	ActewAGL	TasNetworks
Overall WACC (per cent)	6.68	6.68	6.68	6.39	6.37
Return on equity (post-tax nominal) (per cent)	7.10	7.10	7.10	7.10	7.10
Return on debt (pre-tax nominal) (per cent)	6.40	6.40	6.40	5.91	5.88