

1 – 7 January 2017

Weekly Summary

Gas prices increased significantly in Victoria, Sydney and Wallumbilla from the last week. Prices in the second half of this week reach above \$6/GJ in all markets, concentrating around the \$8/GJ mark at the end of the week. Large increases in gas usage by generators in all states contributed to higher prices, coinciding with a number of high temperature conditions across the east coast. Record northerly flows of gas out of Victoria occurred, reaching close to 150 TJ on 5 January, following the expansion of NSW-VIC interconnect in late 2016.¹

A constraint imposed at the Longford gas production plant due to planned maintenance also weighed on prices later in the week. Storage levels at Iona increases by around 1 PJ this week. This follows Iona being relied upon to supply the market during recent reductions in supply from Longford.

Figure 3 shows MOS payments were down sharply from the previous week.

Long term statistics and explanatory material

The AER has published an [explanatory note](#) to assist with interpreting the data presented in its weekly gas market reports. The AER also publish a range of [longer term statistics](#) on the performance of the gas sector including gas prices, production, pipeline flows and consumer demand.

Market overview

Figure 1 sets out the average daily prices (\$/GJ) for the current week, and demand levels, compared to historical averages. Regions shown include the Victorian Declared Wholesale Market (**VGM or Victorian gas market**) and for the Sydney (**SYD**), Adelaide (**ADL**) and Brisbane (**BRI**) Short Term Trading Market hubs (**STTM**). Price and demand information is also shown for the voluntary Wallumbilla and Moomba Gas Supply Hubs (**GSH**).

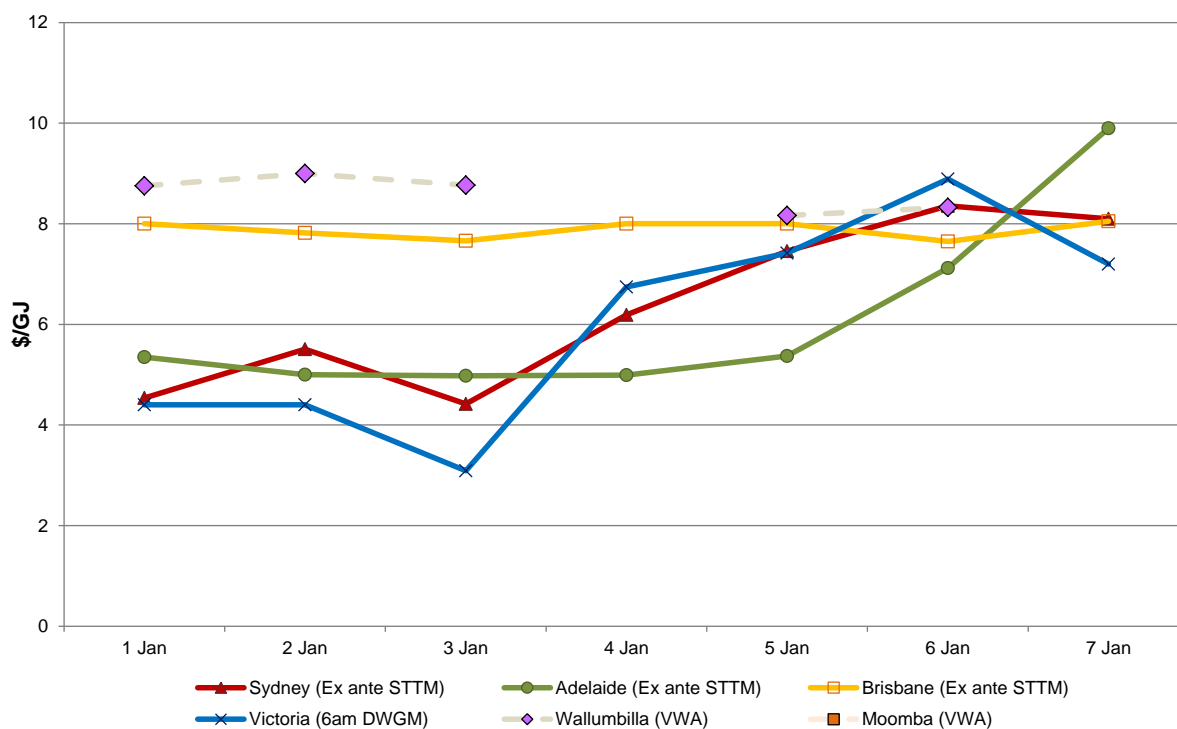
¹ Details of the NSW-VIC interconnect capacity upgrade is provided in the [13–19 November weekly report, p. 3](#).

Figure 1: Average daily prices and demand – all markets (\$/GJ, TJ)²

	Victoria		Sydney		Adelaide		Brisbane		Wallumbilla		Moomba	
	Price	Demand	Price	Demand	Price	Demand	Price	Demand	Price	Quantity	Price	Quantity
01 Jan - 07 Jan 2017	6.07	277	6.37	186	6.10	40	7.88	74	8.65	77	-	-
% change from previous week	55	12	38	3	-5	9	2	15	21	-42	-	-
16-17 financial YTD	7.78	606	7.28	251	8.29	67	7.32	84	7.89	5353	-	-
% change from previous financial YTD	76	-2	56	5	63	2	96	-5	119	7	-	-

Figure 2 illustrates the daily prices in each gas market, as defined in figure 1.

Figure 2: Daily gas market prices (\$/GJ)



² Average daily quantities are displayed for each region, with the exception of Gas Supply Hubs (GSH). The weighted average daily imbalance price applies for Victoria. The prices shown for the GSH in Wallumbilla and Moomba are volume weighted average prices for all products traded across the period. The total quantity contributing to the weighted price is displayed for these GSH.

Figure 3 compares average ancillary market payments (VGM) and balancing gas service payments (STTM) against historical averages.

Figure 3: Average ancillary payments (\$000)

	Victoria Ancillary Payments*	Sydney MOS	Adelaide MOS	Brisbane MOS
01 Jan - 07 Jan 2017	-	24.18	4.18	1.95
% change from previous week	-	-64	-81	-26
16-17 financial YTD		58.52	25.73	1.54
% change from previous financial YTD		141	191	1

* Ancillary payments reflect the compensation costs for any additional injections offered at a price higher than the market price. Note: only positive ancillary payments, reflecting system constraints will be shown here.

More detailed analysis on the VGM is provided in section 1.

Figure 4 shows the quantity and volume weighted prices of products traded in the Gas Supply Hub locations at Wallumbilla and Moomba.

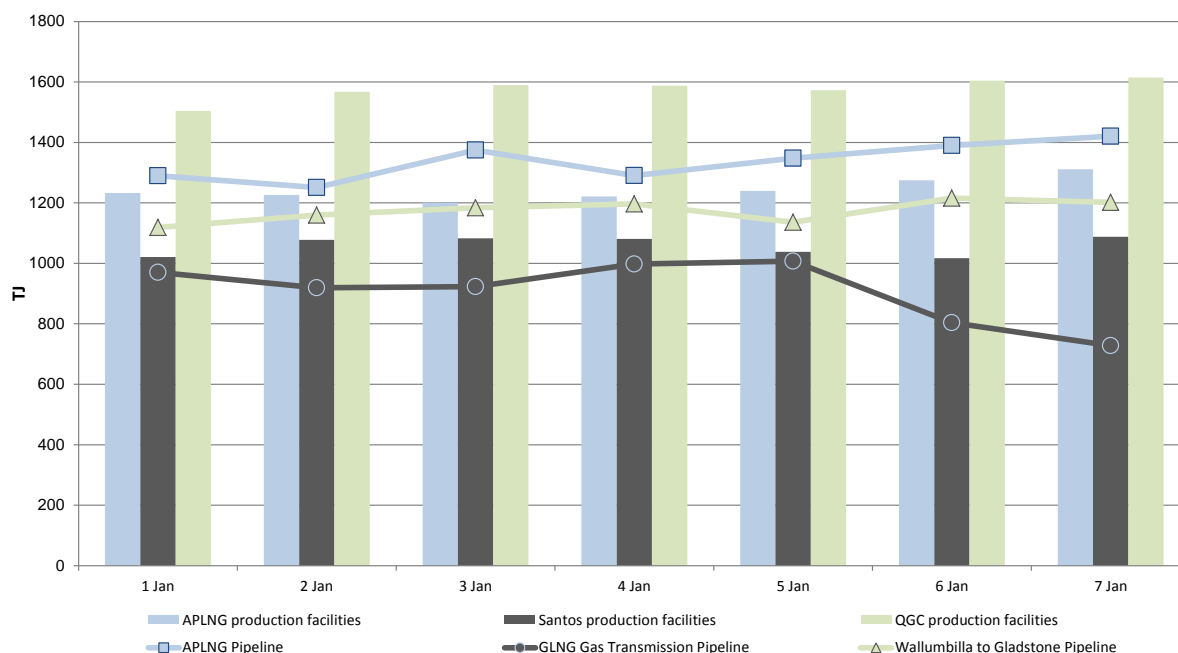
Figure 4: Gas supply hub products traded for the current week (\$/GJ, TJ)*

	RBP		SWQP		MAP		MSP		QGP	
	VWA price	Quantity	VWA price	Quantity	VWA price	Quantity	VWA price	Quantity	VWA price	Quantity
Balance of day	8.72	35.4	8.50	10.0	-	-	-	-	-	-
Daily	8.33	10.0	-	-	-	-	-	-	-	-
Day ahead	8.77	22.0	-	-	-	-	-	-	-	-
Weekly	-	-	-	-	-	-	-	-	-	-
Monthly	-	-	-	-	-	-	-	-	-	-

* Non-netted products are not shown here. For information about these products, refer to figure 6.1.

Figure 5 shows Bulletin Board pipeline flows for the three LNG export pipeline facilities and the production output at related production facilities in the Roma region.

Figure 5: LNG export pipeline and production flows (TJ)*



* Production quantities represent flows from facilities operated by APLNG, Santos and QGC in the Roma region. Gas from individual facilities may also supply the domestic market, other LNG projects or storage facilities.

Detailed market analysis

Victoria and NSW-Vic Interconnect flows

Notable events in Victoria which may have contributed to higher prices toward the week's end were higher priced withdrawal offers on 3, 4 and 7 January. This coincided with large flows of gas out of Victoria for most of the week, implied by record deliveries on the NSW-VIC interconnect particularly on the 4 January at 150 TJ. This follows an increasing trend of gas flows out of Victoria since the NSW-VIC interconnect's completed expansion in mid-November 2016. Gas flows to the export facilities decreased by 105 TJ since last week, mostly as a result of a large decline in flows along the Wallumbilla to Gladstone pipeline. Additionally, constraints of approximately 203 TJ/day were imposed on Longford injections on 6 January due to offshore facility maintenance. During the time that the Longford facility was constrained, gas was supplied by the Iona storage facility, which also recorded increased withdrawals into storage of 1001 TJ from last week.

1. Victorian Declared Wholesale Market

In the Victorian gas market, gas is priced five times daily at 6 am, 10 am, 2 pm, 6 pm and 10 pm. The imbalance weighted price on a gas day tends towards the 6 am price³ which is the schedule at which most gas is traded.

The main drivers⁴ of price are demand forecasts and bids to inject or withdraw gas from the market. Figures 1.1 to 1.4 below show the daily prices, demand forecasts⁵, and injection/withdrawal bids for each of the five pricing schedules. Figure 1.5 provides information on which system injection points were used to deliver gas, in turn indicating the location and relative quantity of gas injection bids cleared through the market.

Ancillary payments for gas injected above the market price are shown above in figure 3.

Figure 1.1: Prices by schedule (\$/GJ)

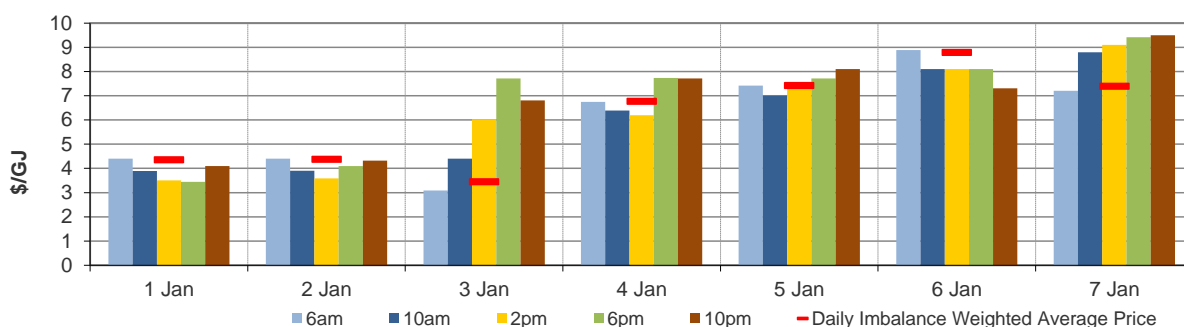
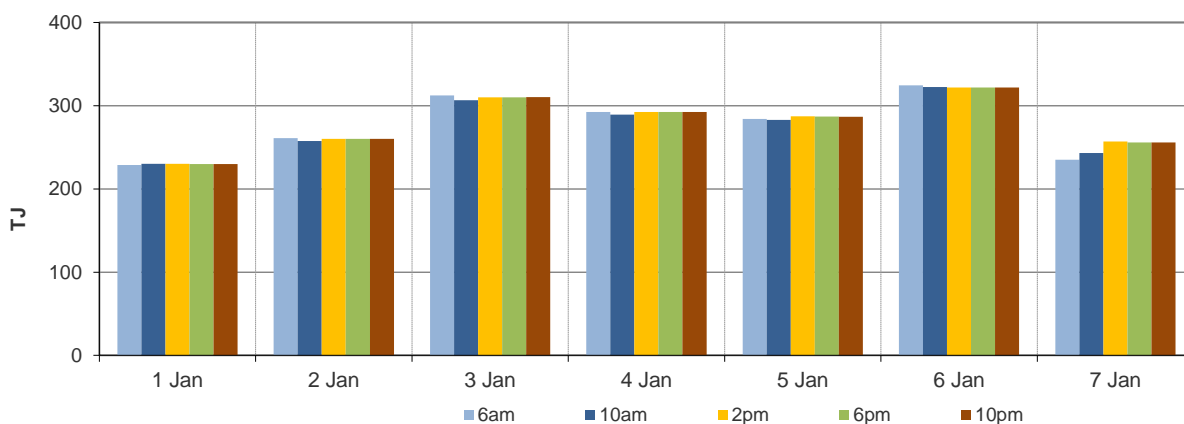


Figure 1.2: Demand forecasts (TJ)



³ Prices for subsequent schedules are applied only to the differences in scheduled quantities (imbalances) to calculate the weighted price. The 6 am price applies to the entire scheduled quantity in the initial schedule.

⁴ The price might also be affected by transmission or production (contractual) constraints limiting how much gas can be delivered from a locale or System Injection Point (SIP) from time to time.

⁵ These are Market Participants' aggregate demand forecasts adjusted for any override as applied by AEMO from time to time. These forecasts must be scheduled and cannot respond to price like withdrawal bids.

Figure 1.3: Injection bids by price bands (TJ)

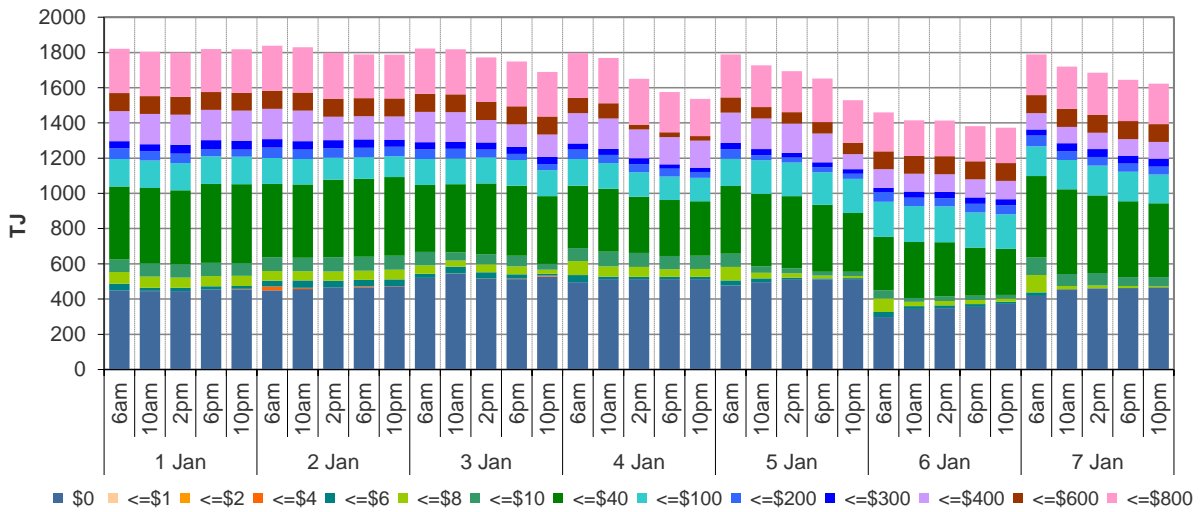


Figure 1.4: Withdrawal bids by price bands (TJ)

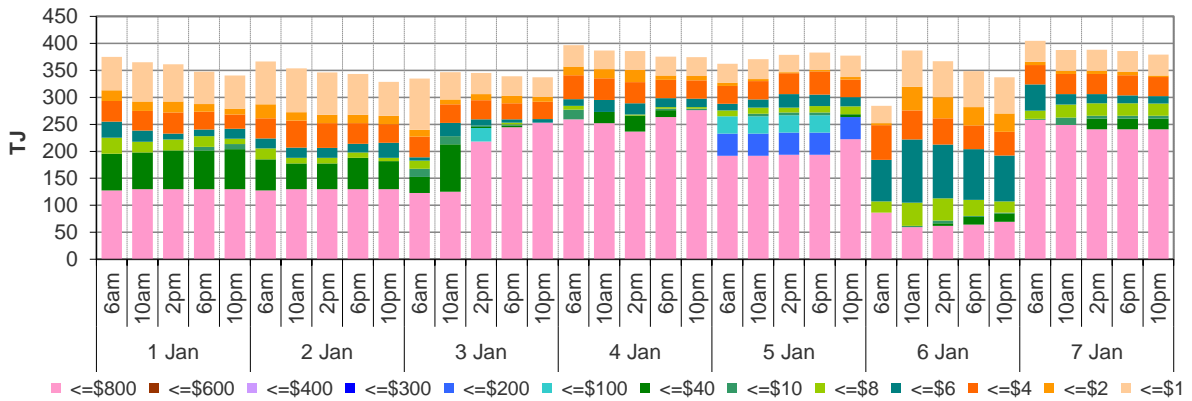
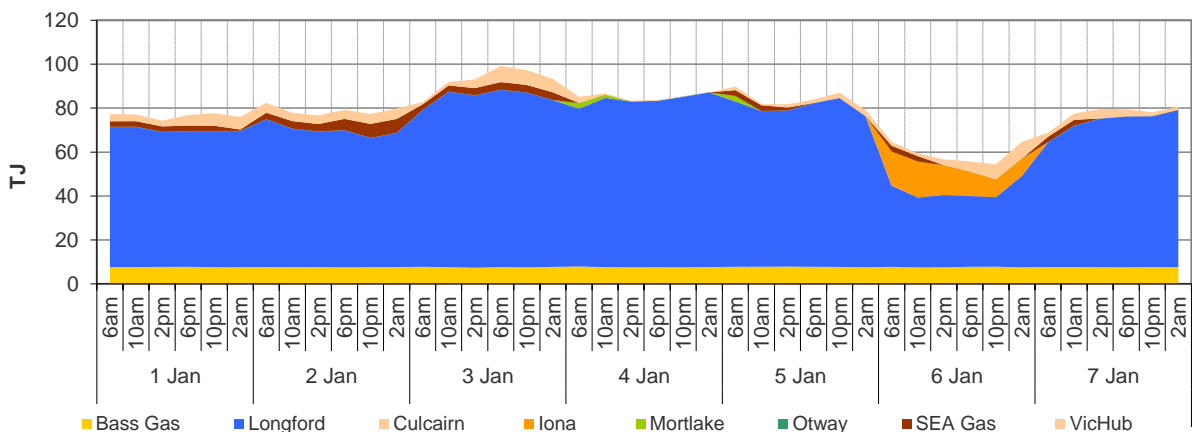


Figure 1.5: Metered Injections by System Injection Point (TJ)



Note that in figure 1.5, the last 8-hour schedule from 10 pm has been separated into two 4-hour blocks to provide a consistent comparison with earlier scheduled injection volumes.

2. Sydney STTM

In each STTM hub, a daily gas price is calculated before the gas day (the ex ante price) and after the gas day (the ex post price). The main drivers of these prices are participant demand forecasts, and offers to inject or bids to withdraw gas traded at the hub.⁶ Divergences in ex ante and ex post prices for a gas day may occur due to differences in scheduled (forecast) and allocated (actual) quantities. Pipeline acronyms are defined in the [user guide](#).

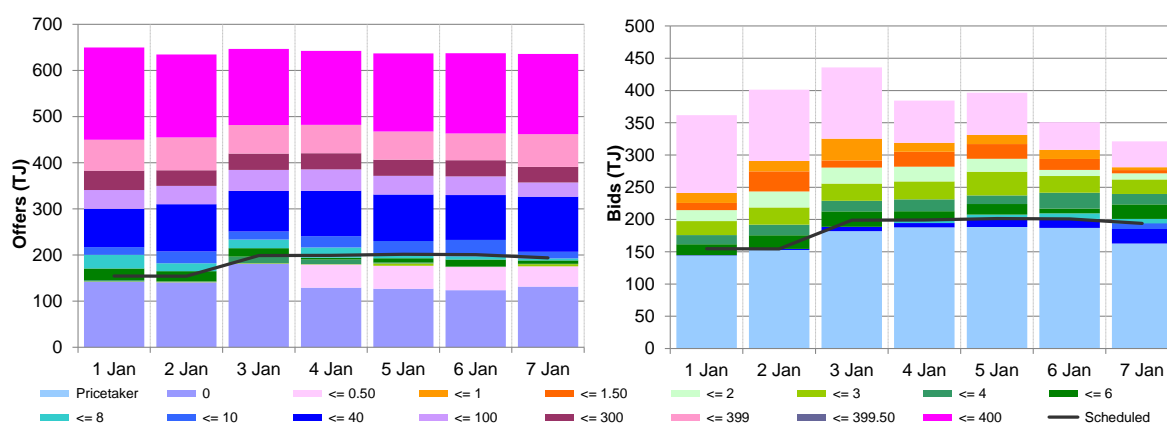
Market Operator Service balancing gas (MOS) payments arise because the amount of gas nominated on pipelines for delivery on a gas day will either exceed or fall short, by some amount, of the amount of gas consumed in the hub. In such circumstances, MOS payments are made to participants for providing a service to park gas on a pipeline or to loan gas from a pipeline to the hub.⁷

Figures 2.1 and 2.2 show daily prices, demand, offers and bids. Figures 2.3 and 2.4 show gas scheduled and allocated on pipelines to supply the hub, indicating the location and relative quantity of gas offers across pipelines and also the amount of MOS allocated for each pipeline.

Figure 2.1: SYD STTM daily ex ante and ex post prices and quantities

	Sun	Mon	Tue	Wed	Thu	Fri	Sat
Ex ante price (\$/GJ)	4.54	5.51	4.42	6.19	7.46	8.36	8.10
Ex ante quantity (TJ)	155	154	199	199	202	201	194
Ex post price (\$/GJ)	4.00	5.36	4.10	6.19	5.60	5.60	7.10
Ex post quantity (TJ)	138	150	188	198	182	178	190

Figure 2.2: SYD daily hub offers and daily hub bids in price bands (\$/GJ)



⁶ The main driver of the amount of gas scheduled on a gas day is the 'price-taker' bid, which is forecast hub demand that cannot respond to price and which must be delivered, regardless of the price.

⁷ MOS service payments involve a payment for a MOS increase service when the actual quantity delivered exceeds final gas nominations for delivery to a hub, and a payment for a MOS decrease service when the actual quantity delivered is less than final nominations. As well as a MOS 'service' payment, as shown in figure 2.4, MOS providers are paid for or pay for the quantity of MOS sold into the market or bought from the market (MOS 'commodity' payments/charges).

Figure 2.3: SYD net scheduled and allocated gas hub supply (excluding MOS)

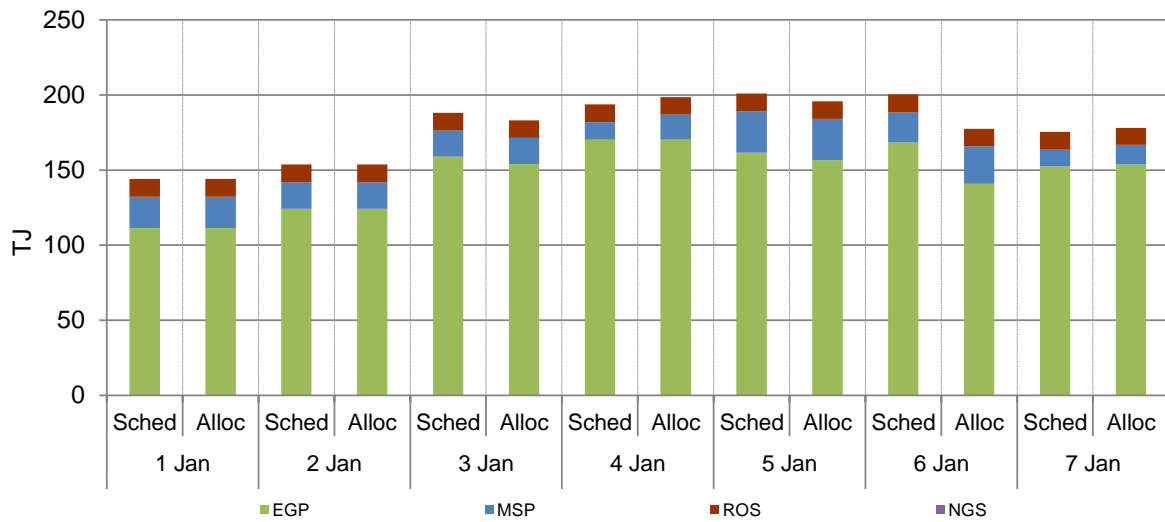
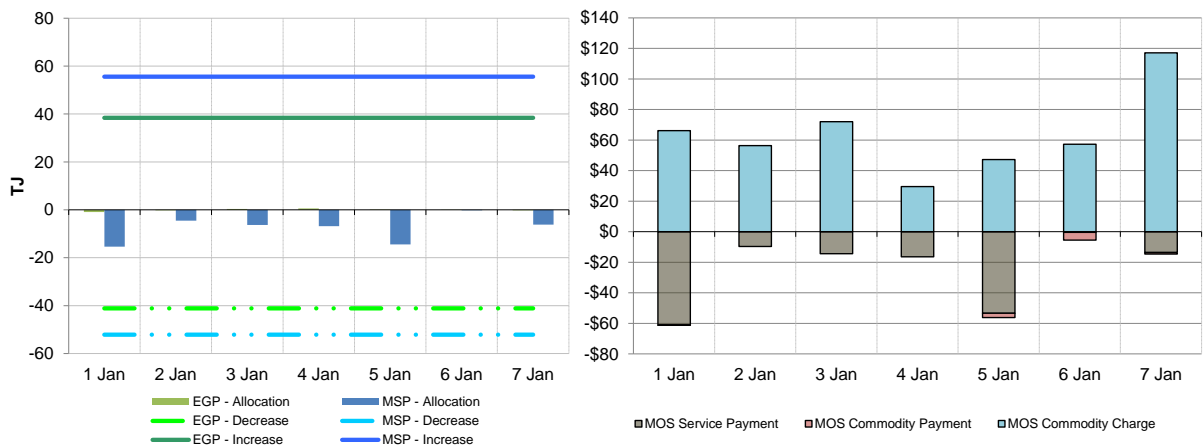


Figure 2.4: SYD MOS allocations (TJ), service payments and commodity payments/charges (\$000)⁸



⁸ The commodity cost of MOS illustrated on the right of the figure represents the commodity quantity at the D+2 ex ante price. Commodity payments and charges for a given gas day relate to quantities traded two days earlier. That is, the commodity cost for services provided on Sunday will appear in the chart for Tuesday, when the D+2 price is set. In contrast, service payments are shown alongside the day they occurred.

3. Adelaide STTM

The Adelaide STTM hub functions in the same way as the Sydney STTM hub. The same data that was presented for the Sydney hub is presented for the Adelaide hub in the figures below.

Figure 3.1: ADL STTM daily ex ante and ex post prices and quantities

	Sun	Mon	Tue	Wed	Thu	Fri	Sat
Ex ante price (\$/GJ)	5.35	5.00	4.98	4.99	5.37	7.12	9.90
Ex ante quantity (TJ)	34	35	45	42	41	43	38
Ex post price (\$/GJ)	5.35	5.00	4.65	5.25	6.66	9.31	10.00
Ex post quantity (TJ)	35	35	45	43	46	52	45

Figure 3.2: ADL daily hub offers and daily hub bids in price bands (\$/GJ)

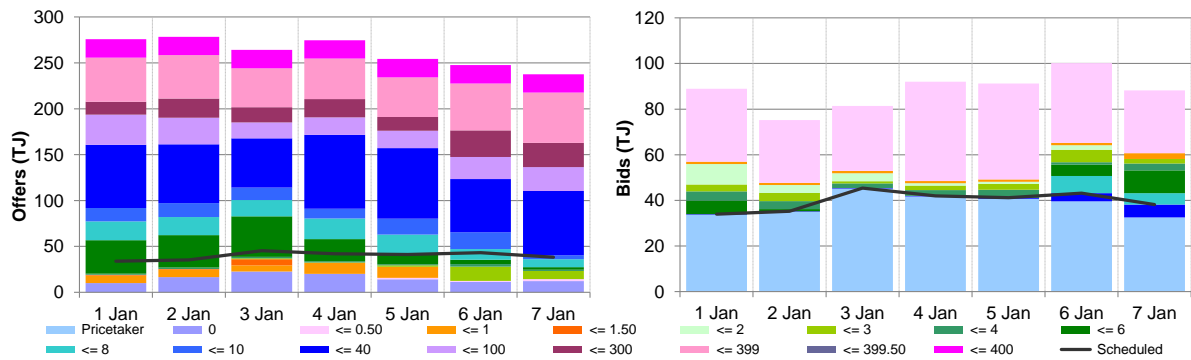


Figure 3.3: ADL net scheduled and allocated gas hub supply (excluding MOS)

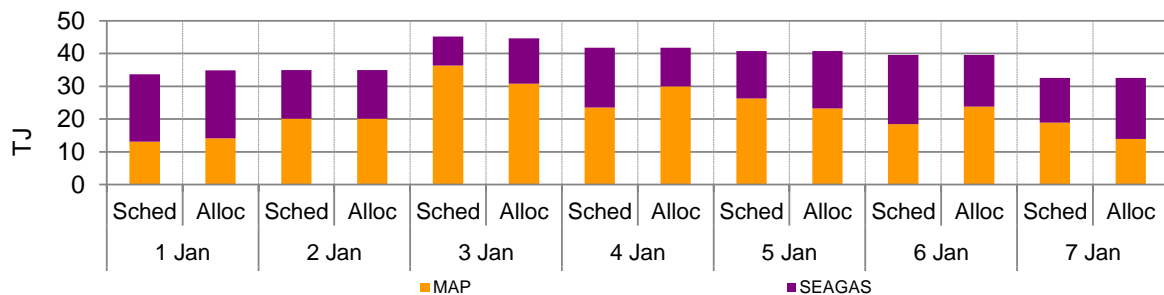
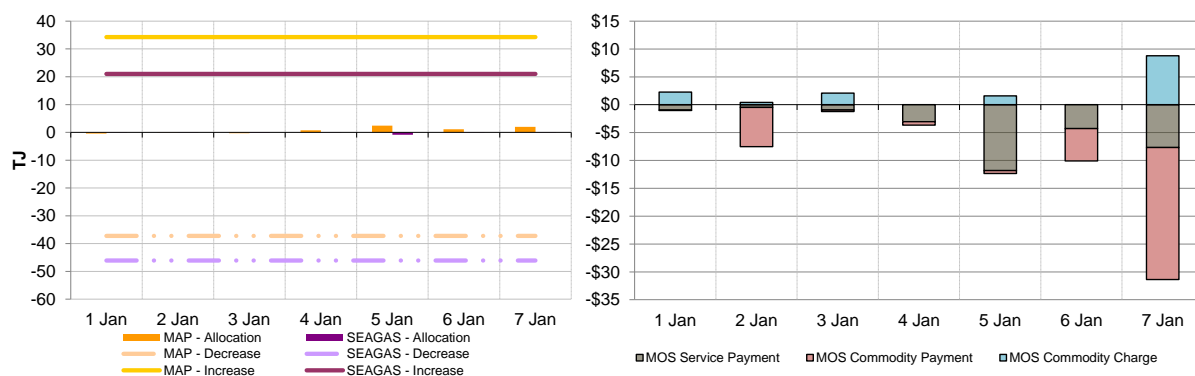


Figure 3.4: ADL MOS allocations (TJ), service payments and commodity payments/charges (\$000)



4. Brisbane STTM

The Brisbane STTM hub functions in the same way as the Sydney STTM hub. The same data that was presented for the Sydney hub is presented for the Brisbane hub in the figures below.

Figure 4.1: BRI STTM daily ex ante and ex post prices and quantities

	Sun	Mon	Tue	Wed	Thu	Fri	Sat
Ex ante price (\$/GJ)	8.00	7.82	7.66	8.00	8.00	7.65	8.05
Ex ante quantity (TJ)	64	69	81	76	78	78	74
Ex post price (\$/GJ)	7.00	7.71	6.83	8.00	7.50	7.02	8.05
Ex post quantity (TJ)	58	65	75	77	75	71	73

Figure 4.2: BRI daily hub offers and daily hub bids in price bands (\$/GJ)

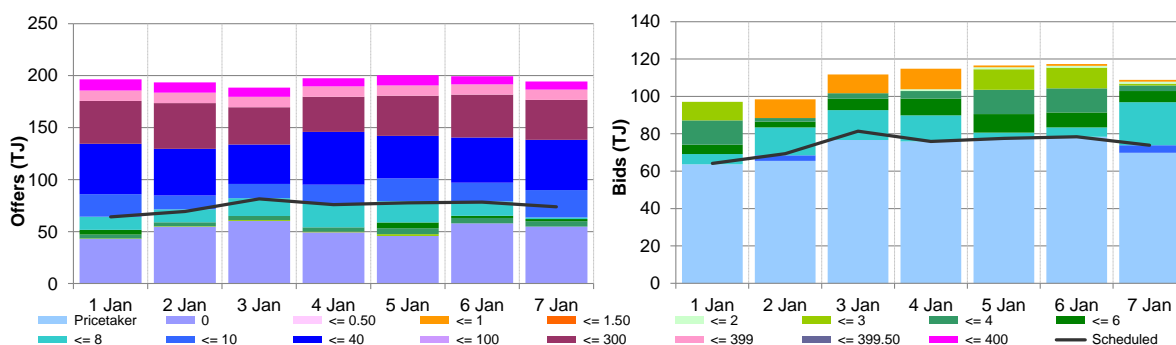


Figure 4.3: BRI net scheduled and allocated gas hub supply (excluding MOS)

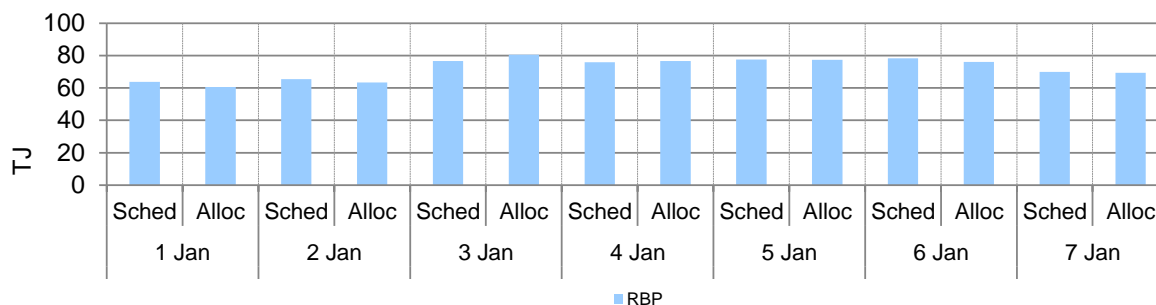
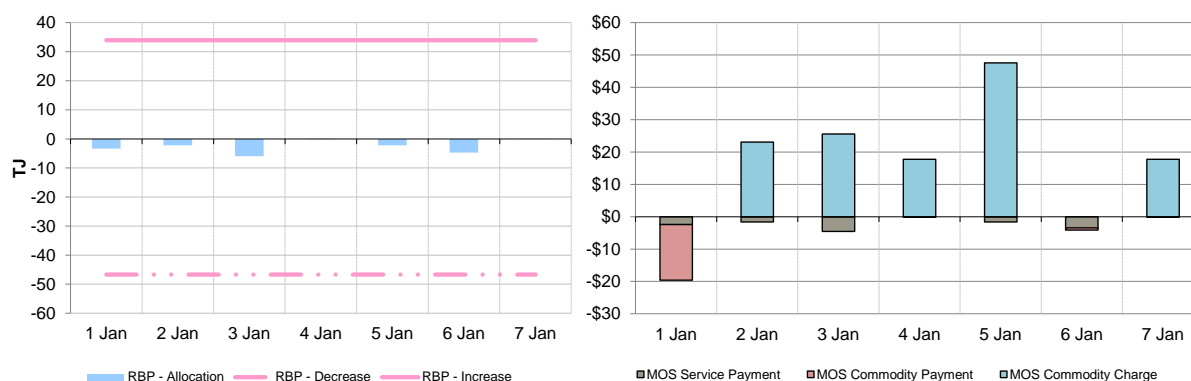


Figure 4.4: BRI MOS allocations (TJ), service payments and commodity payments/charges (\$000)



5. National Gas Bulletin Board

Figure 5.1 shows average daily actual flows for the current week⁹ from the Bulletin Board (changes from the previous week's average are shown in brackets). Average daily prices¹⁰ are provided for gas markets and gas supply hubs. Average daily quantities are provided for gas powered generation for each region.

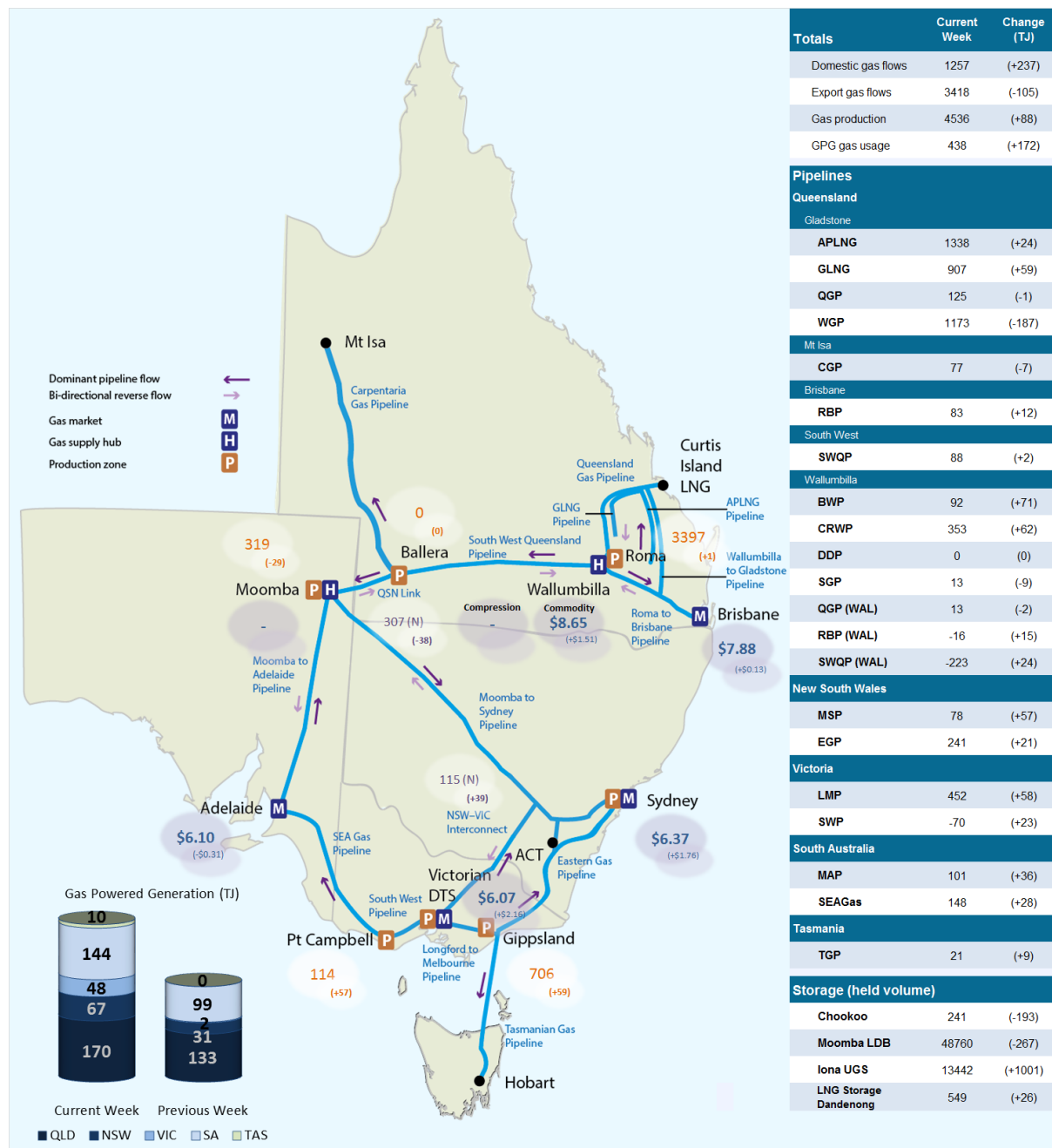
⁹ **Domestic gas flows** are calculated as the total of: **SA** = MAP + SEAGAS; **VIC** = SWP + LMP + (absolute quantity of negative flows only on the 'NSW-VIC interconnect'); **NSW/ACT** = EGP + MSP; **TAS** = TGP; **QLD (Brisbane)** = RBP; **QLD (Mt Isa)** = CGP; and **QLD (Gladstone)** = QGP.

Export gas flows are calculated as the total of: the APLNG pipeline; the GLNG pipeline; and the Wallumbilla to Gladstone pipeline.

GPG volumes may include gas usage that does not show up on Bulletin Board pipeline flows.

¹⁰ GSH supply is the average daily volume of gas 'traded', while price is a volume weighted average. Optional hub services (for compression and redirection) are shown separately from commodity trades.

Figure 5.1: Gas market data (\$/GJ, TJ); Bulletin Board flows (TJ)¹¹



11

Net flows are shown for Bulletin Board facilities, as outlined in the [user guide](#).

6. Gas Supply Hub

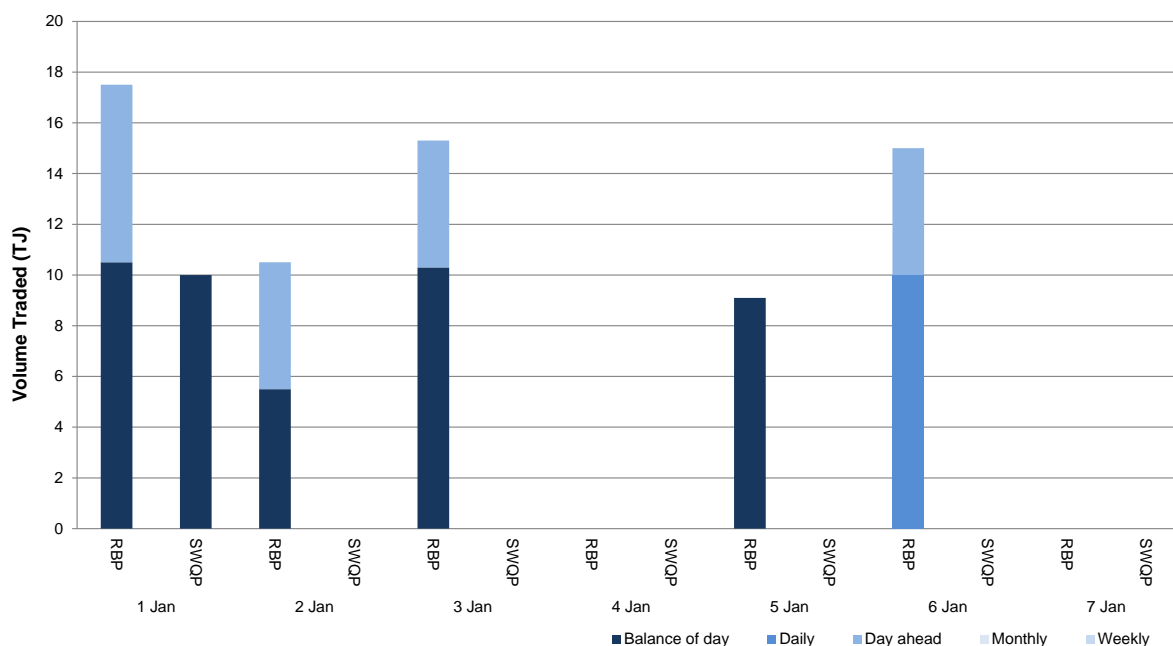
The gas supply hub was established at Wallumbilla in March 2014 to facilitate the voluntary trading of gas between participants, with products listed for sale and purchase at delivery points on three major connecting pipelines at Wallumbilla – the **QGP**, the **SWQP** and the **RBP**. There are separate products for each pipeline (trading location) and delivery period (daily, day-ahead, balance-of-day, weekly and monthly products).¹²

The Moomba hub commenced operation from June 2016 to further facilitate trading on the **MAP** and **MSP**, with trading between the two hubs on the SWQP via a spread product (representing the price differential between the hubs). From October 2016, the addition of a Wallumbilla Compression Product was introduced to facilitate the supply hub's transition from three different trading locations into one.

This week in the Wallumbilla hub there were 16 trades for 77.4 TJ of gas at a volume weighted price of \$8.65/GJ. There were two balance-of-day trades on the SWQP (10 TJ at \$8.50/GJ) and balance-of-day, day-ahead and daily products were traded on the RBP (67.4 TJ at \$8.67/GJ).

Figure 6.1 shows the quantity of gas traded by product type for each trading day on pipeline trading locations in the Wallumbilla and Moomba Gas Supply Hubs.¹³

Figure 6.1: GSH traded quantities



Australian Energy Regulator January 2017

¹² Additional information on trading locations and available products is detailed in the [user guide](#).

¹³ Non-netted (off-market) trades, allowing the selection of specific delivery point at a trading location, are denoted as WAL*.