

21 – 27 January 2018

Weekly Summary

Average prices remained relatively unchanged from the previous week. Higher demand in Victoria was driven by increased gas usage for electricity generation (see **figure 5.1**).

Higher demand for gas for electricity generation in Victoria was partly met by increased injections from the Iona Underground Storage facility at Port Campbell. As shown at **figure 5.1**, Iona depleted by a daily average of 123 terajoules (TJ) from the previous week.

Production at Roma in Queensland was at near record levels throughout the week.

Long term statistics and explanatory material

The AER has published an [explanatory note](#) to assist with interpreting the data presented in its weekly gas market reports. The AER also publishes a range of [longer term statistics](#) on the performance of the gas sector including gas prices, production, pipeline flows and consumer demand.

Market overview

Figure 1 sets out the average daily prices (\$/GJ) for the current week, and demand levels, compared to historical averages. Regions shown include the Victorian Declared Wholesale Market (**VGM or Victorian gas market**) and for the Sydney (**SYD**), Adelaide (**ADL**) and Brisbane (**BRI**) Short Term Trading Market hubs (**STTM**).

Figure 1: Average daily prices and demand – all markets (\$/GJ, TJ)¹

| | Victoria | | Sydney | | Adelaide | | Brisbane | |
|--------------------------------------|----------|--------|--------|--------|----------|--------|----------|--------|
| | Price | Demand | Price | Demand | Price | Demand | Price | Demand |
| 21 Jan - 27 Jan 2018 | 9.34 | 353 | 9.78 | 222 | 8.29 | 35 | 8.01 | 120 |
| % change from previous week | 1 | 7 | -1 | -3 | 1 | 0 | -4 | -4 |
| 17-18 financial YTD | 7.63 | 606 | 8.24 | 251 | 7.76 | 62 | 7.17 | 90 |
| % change from previous financial YTD | -2 | 5 | 10 | 1 | -7 | -4 | -6 | 6 |

Figure 2 sets out price and demand information for the voluntary Wallumbilla and Moomba Gas Supply Hubs (**GSH**).

¹ Average daily quantities are displayed for each region. The weighted average daily imbalance price applies for Victoria.

Figure 2: Average prices and total quantity – Gas supply hub (\$/GJ, TJ)²

| | Moomba | | South East Queensland | | Wallumbilla | |
|--------------------------------------|--------|----------|-----------------------|----------|-------------|----------|
| | Price | Quantity | Price | Quantity | Price | Quantity |
| 21 Jan - 27 Jan 2018 | - | - | 8.42 | 108 | 8.49 | 115 |
| % change from previous week | - | - | -1 | -27 | -3 | 6 |
| 17-18 financial YTD | 5.33 | 12 | 7.14 | 5403 | 7.56 | 2358 |
| % change from previous financial YTD | - | - | - | - | -6 | -58 |

Figure 3 illustrates the daily prices in each gas market, as defined in figures 1 and 2.

Figure 3: Daily gas market prices (\$/GJ)

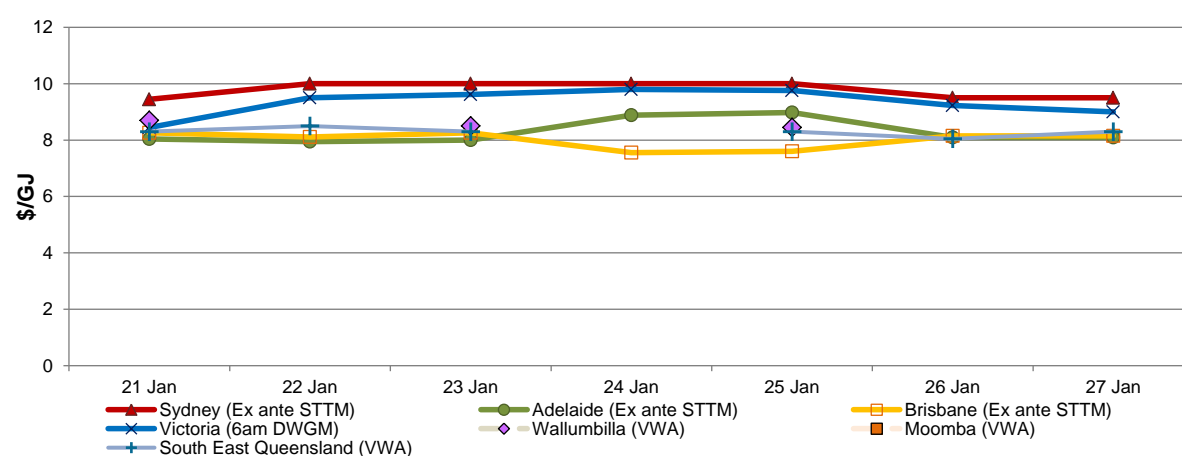


Figure 4 compares average ancillary market payments (VGM) and balancing gas service payments (STTM) against historical averages.

Figure 4: Average ancillary payments (\$000)

| | Victoria Ancillary Payments* | Sydney MOS | Adelaide MOS | Brisbane MOS |
|--------------------------------------|------------------------------|------------|--------------|--------------|
| 21 Jan - 27 Jan 2018 | - | 15.61 | 6.17 | 2.23 |
| % change from previous week | - | 17 | -11 | -15 |
| 17-18 financial YTD | - | 31.72 | 6.22 | 2.59 |
| % change from previous financial YTD | - | -44 | -74 | 61 |

* Ancillary payments reflect the compensation costs for any additional injections offered at a price higher than the market price. Note: only positive ancillary payments, reflecting system constraints will be shown here.

More detailed analysis on the VGM is provided in section 1.

² The prices shown for the GSH in Moomba, South East Queensland and Wallumbilla are volume weighted average (VWA) prices for all products traded across the period. The total quantity contributing to the weighted price is displayed for these GSH. Reported values for Moomba are the aggregate of trades on the Moomba to Adelaide Pipeline (MAP) and the Moomba to Sydney Pipeline (MSP). Historic trades for RBP and SWQP are grouped under WAL, (including in-pipe trades on the RBP).

Figure 5 shows the quantity and volume weighted prices of products traded in the Gas Supply Hub locations at Moomba, South East Queensland and Wallumbilla.

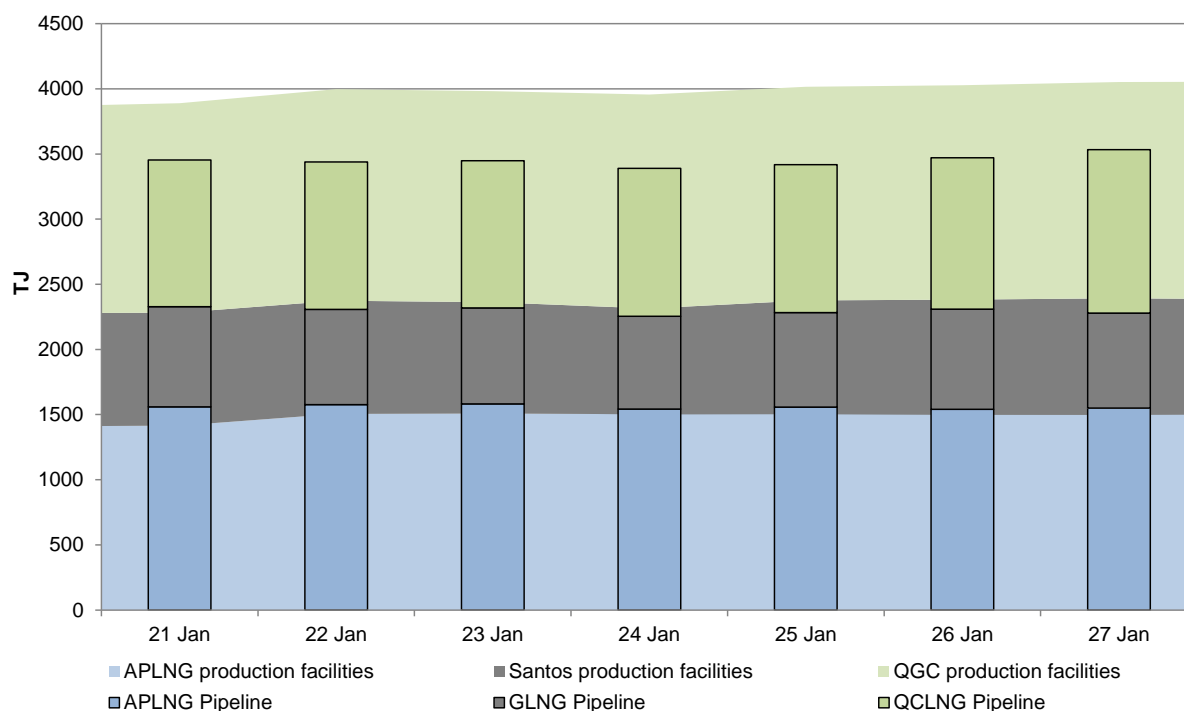
Figure 5: Gas supply hub products traded for the current week (\$/GJ, TJ)

| | Moomba | | South East Queensland | | Wallumbilla* | |
|-----------------------|-----------|----------|-----------------------|--------------|--------------|--------------|
| | VWA price | Quantity | VWA price | Quantity | VWA price | Quantity |
| Balance of day | - | - | 8.16 | 12.0 | - | - |
| Daily | - | - | 8.47 | 35.0 | 8.50 | 5.0 |
| Day ahead | - | - | 8.34 | 26.0 | 8.70 | 5.0 |
| Weekly | - | - | 8.50 | 35.0 | 8.48 | 105.0 |
| Monthly | - | - | - | - | - | - |
| Total | - | - | 8.42 | 108.0 | 8.49 | 115.0 |

* includes non-netted (off-market) trades.

Figure 6 shows Bulletin Board pipeline flows for the three LNG export pipeline facilities and the production output at related production facilities in the Roma region.

Figure 6: LNG export pipeline and production flows (TJ)*



* Production quantities represent flows from facilities operated by APLNG, Santos and QGC in the Roma region. Gas from individual facilities may also supply the domestic market, other LNG projects or storage facilities.

Detailed market analysis

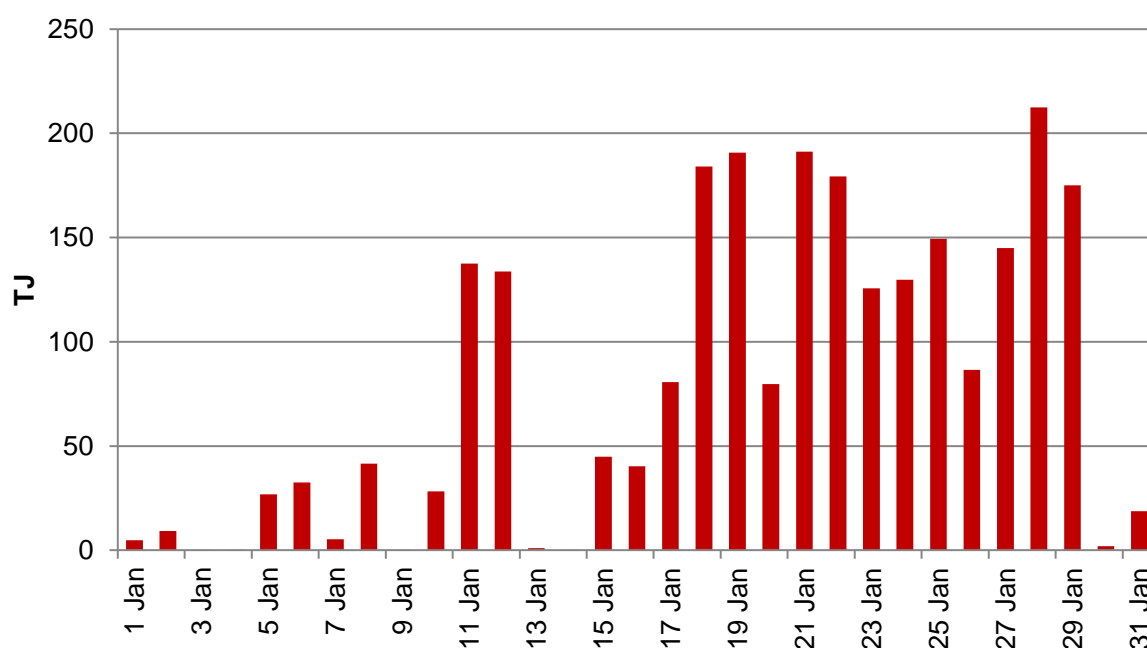
Victorian demand

As shown at **figure 5.1** (p.12), there was a 62 per cent increase in demand for gas for electricity generation this week in Victoria. There have been large week-on-week increases to gas demand for electricity generation in Victoria since the first week of January 2018.

Victoria's reliance on gas for electricity generation has increased since the closure of the coal-fired Hazelwood Power Station in March 2017. This is exacerbated during hot weather, when higher demand for electricity is more likely to require supply from the State's gas powered generation (GPG) facilities. Victoria's average daily demand for gas for GPG was 24 TJ across the December – January period in 2016/17. That increased to 84 TJ for the same period in 2017/18.

Electricity demand is typically low during the summer holiday period and increases during January/February as industrial demand returns. **Figure 7** shows Victorian demand for gas for GPG for the January 2018 month to-date. There has been a distinct increase in demand across the second half of the month. The week of 21 – 27 January is the first full week of sustained gas demand from Victorian GPG since the beginning of the year.

Figure 7: January 2018 Victorian gas demand for electricity generation (TJ)



Prices in Victoria and Sydney

At \$9.34/GJ for the week, the Victorian wholesale price remains well above the \$7.63/GJ price for the financial year-to-date. This can be attributed to high demand for gas for electricity generation relative to overall demand. At 144 TJ (see **figure 5.1**), average daily gas demand for GPG approached half of Victoria's overall gas demand (353 TJ). This ratio is smaller during winter when overall Victorian demand is commonly in the vicinity of 1000 TJ. Given that GPG typically sets the marginal cost of gas, electricity generation is an important factor driving wholesale gas prices in early 2018.

The Sydney STTM sources the majority of its gas from the Victorian market. In addition to the cost of transportation, Sydney wholesale prices will likely be influenced by Victorian

prices. Sydney wholesale prices have been shadowing Victorian prices throughout the 2017/18 summer, with Sydney the highest priced east coast gas market during that period.

Iona Underground Storage

This week's overall demand increase in Victoria follows successive week-to-week demand increases since the beginning of the year. It marks the first week, since 17 December 2017, of a daily average decline in gas held at the state's Iona Underground Storage facility. Iona depleted by a daily average of 123 TJ for the week. The facility typically fills during summer in preparation for the winter demand peak.

Queensland LNG production

Gas production in Queensland's Roma region has been consistently high throughout the 2017/18 summer. This week, production reached near record levels, averaging 3742 TJ daily and nearing the 3808 TJ production record set on 15 November 2017.

1. Victorian Declared Wholesale Market

In the Victorian gas market, gas is priced five times daily at 6 am, 10 am, 2 pm, 6 pm and 10 pm. The imbalance weighted price on a gas day tends towards the 6 am price³ which is the schedule at which most gas is traded.

The main drivers⁴ of price are demand forecasts and bids to inject or withdraw gas from the market. Figures 1.1 to 1.4 below show the daily prices, demand forecasts⁵, and injection/withdrawal bids for each of the five pricing schedules. Figure 1.5 provides information on which system injection points were used to deliver gas, in turn indicating the location and relative quantity of gas injection bids cleared through the market.

Ancillary payments for gas injected above the market price are shown above in figure 3.

Figure 1.1: Prices by schedule (\$/GJ)

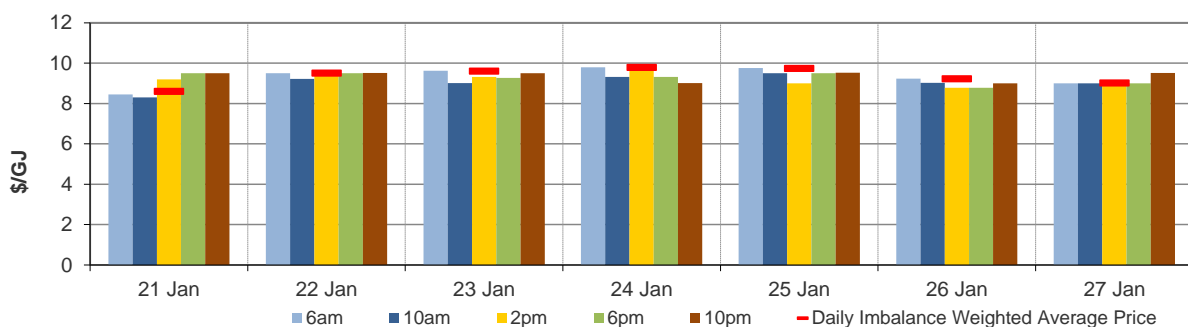
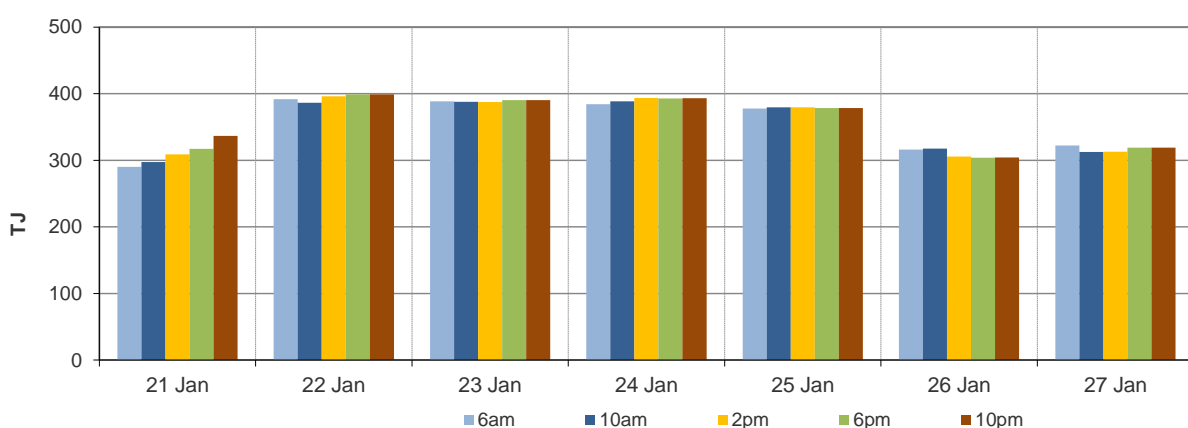


Figure 1.2: Demand forecasts (TJ)



³ Prices for subsequent schedules are applied only to the differences in scheduled quantities (imbalances) to calculate the weighted price. The 6 am price applies to the entire scheduled quantity in the initial schedule.

⁴ The price might also be affected by transmission or production (contractual) constraints limiting how much gas can be delivered from a locale or System Injection Point (SIP) from time to time.

⁵ These are Market Participants' aggregate demand forecasts adjusted for any override as applied by AEMO from time to time. These forecasts must be scheduled and cannot respond to price like withdrawal bids.

Figure 1.3: Injection bids by price bands (TJ)

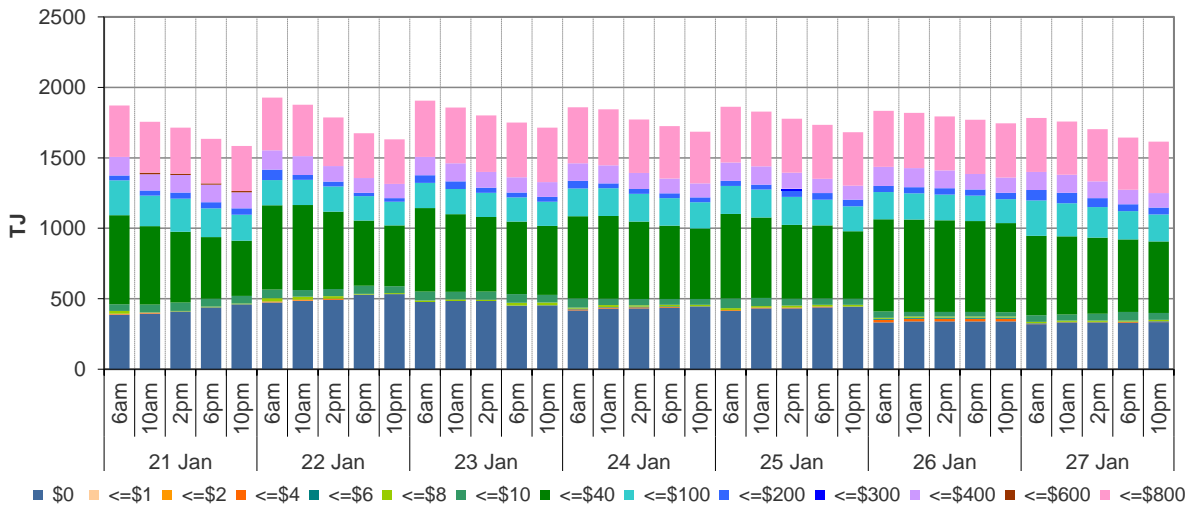


Figure 1.4: Withdrawal bids by price bands (TJ)

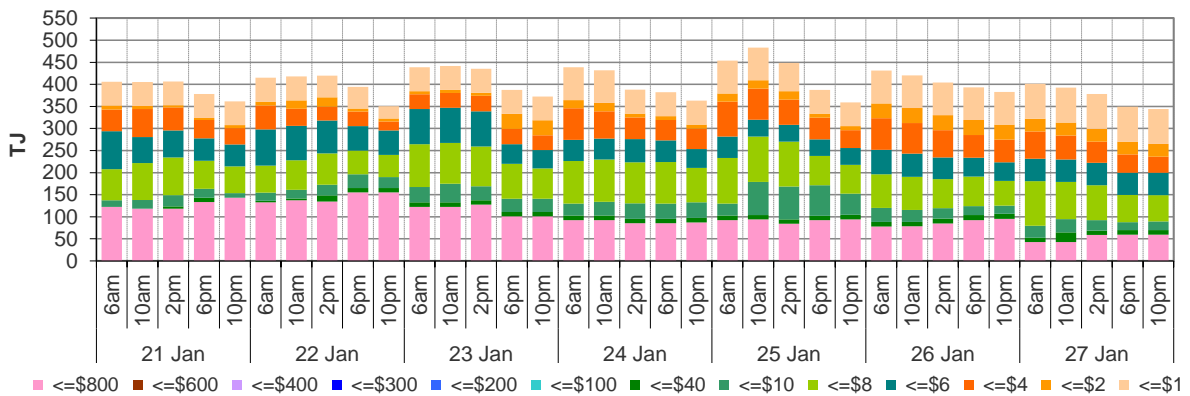
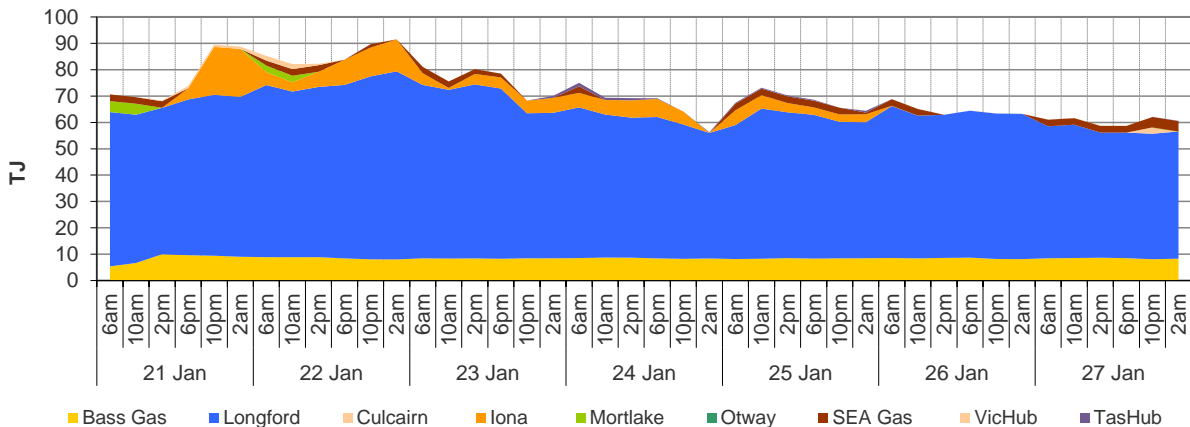


Figure 1.5: Metered Injections by System Injection Point (TJ)



Note that in figure 1.5, the last 8-hour schedule from 10 pm has been separated into two 4-hour blocks to provide a consistent comparison with earlier scheduled injection volumes.

2. Sydney STTM

In each STTM hub, a daily gas price is calculated before the gas day (the ex ante price) and after the gas day (the ex post price). The main drivers of these prices are participant demand forecasts, and offers to inject or bids to withdraw gas traded at the hub.⁶ Divergences in ex ante and ex post prices for a gas day may occur due to differences in scheduled (forecast) and allocated (actual) quantities. Pipeline acronyms are defined in the [user guide](#).

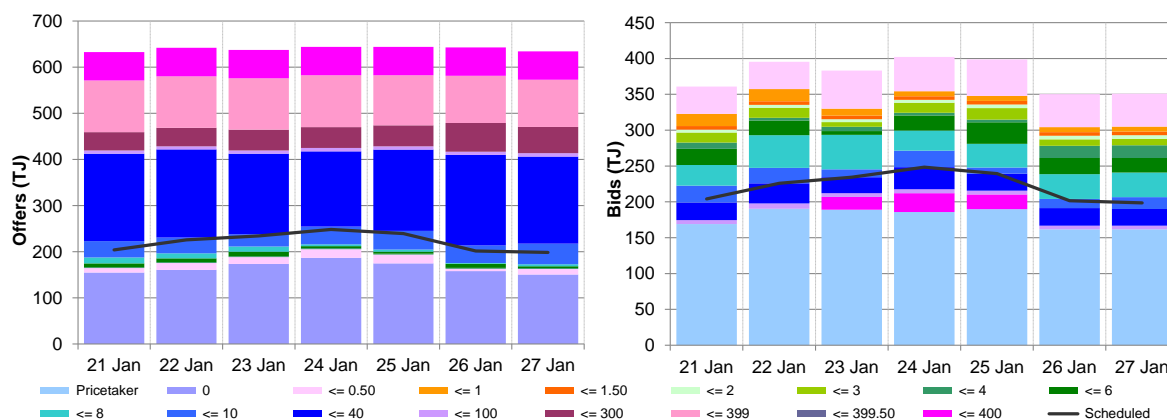
Market Operator Service balancing gas (MOS) payments arise because the amount of gas nominated on pipelines for delivery on a gas day will either exceed or fall short, by some amount, of the amount of gas consumed in the hub. In such circumstances, MOS payments are made to participants for providing a service to park gas on a pipeline or to loan gas from a pipeline to the hub.⁷

Figures 2.1 and 2.2 show daily prices, demand, offers and bids. Figures 2.3 and 2.4 show gas scheduled and allocated on pipelines to supply the hub, indicating the location and relative quantity of gas offers across pipelines and also the amount of MOS allocated for each pipeline.

Figure 2.1: SYD STTM daily ex ante and ex post prices and quantities

| | Sun | Mon | Tue | Wed | Thu | Fri | Sat |
|-----------------------|-------|-------|-------|-------|-------|------|------|
| Ex ante price (\$/GJ) | 9.45 | 10.00 | 10.00 | 10.00 | 10.00 | 9.50 | 9.50 |
| Ex ante quantity (TJ) | 204 | 226 | 234 | 248 | 239 | 202 | 199 |
| Ex post price (\$/GJ) | 10.00 | 11.49 | 11.31 | 10.00 | 9.50 | 9.50 | 9.50 |
| Ex post quantity (TJ) | 223 | 250 | 250 | 248 | 231 | 201 | 199 |

Figure 2.2: SYD daily hub offers and daily hub bids in price bands (\$/GJ)



⁶ The main driver of the amount of gas scheduled on a gas day is the 'price-taker' bid, which is forecast hub demand that cannot respond to price and which must be delivered, regardless of the price.

⁷ MOS service payments involve a payment for a MOS increase service when the actual quantity delivered exceeds final gas nominations for delivery to a hub, and a payment for a MOS decrease service when the actual quantity delivered is less than final nominations. As well as a MOS 'service' payment, as shown in figure 2.4, MOS providers are paid for or pay for the quantity of MOS sold into the market or bought from the market (MOS 'commodity' payments/charges).

Figure 2.3: SYD net scheduled and allocated gas hub supply (excluding MOS)

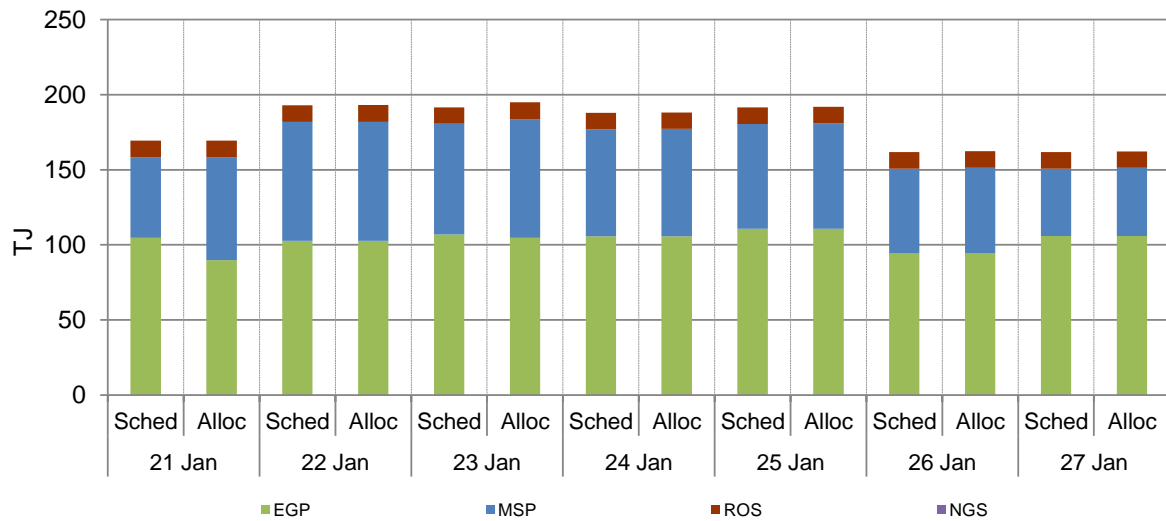
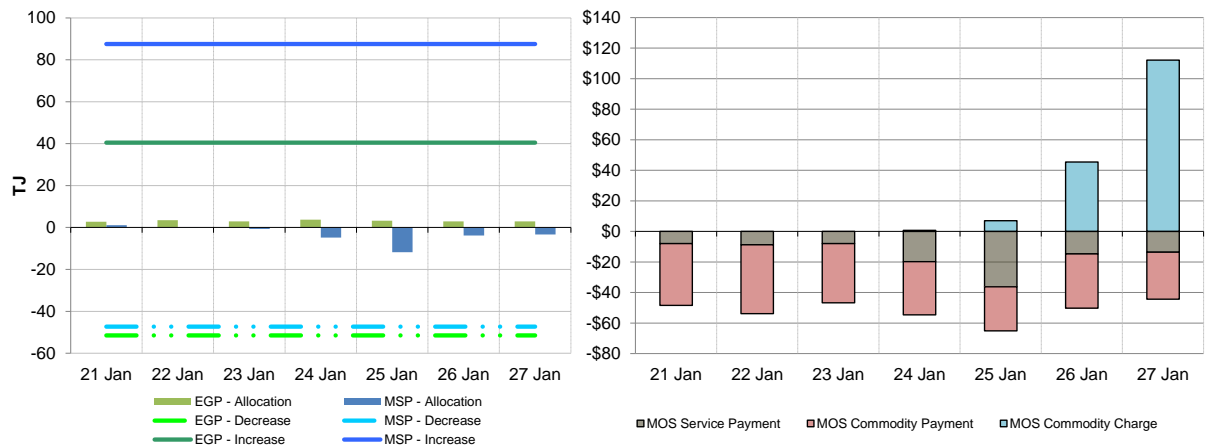


Figure 2.4: SYD MOS allocations (TJ), service payments and commodity payments/charges (\$000)⁸



⁸ The commodity cost of MOS illustrated on the right of the figure represents the commodity quantity at the D+2 ex ante price. Commodity payments and charges for a given gas day relate to quantities traded two days earlier. That is, the commodity cost for services provided on Sunday will appear in the chart for Tuesday, when the D+2 price is set. In contrast, service payments are shown alongside the day they occurred.

3. Adelaide STTM

The Adelaide STTM hub functions in the same way as the Sydney STTM hub. The same data that was presented for the Sydney hub is presented for the Adelaide hub in the figures below.

Figure 3.1: ADL STTM daily ex ante and ex post prices and quantities

| | Sun | Mon | Tue | Wed | Thu | Fri | Sat |
|-----------------------|------|------|------|------|------|------|------|
| Ex ante price (\$/GJ) | 8.04 | 7.95 | 8.00 | 8.88 | 8.98 | 8.09 | 8.09 |
| Ex ante quantity (TJ) | 27 | 37 | 38 | 40 | 39 | 33 | 32 |
| Ex post price (\$/GJ) | 8.07 | 8.45 | 8.00 | 8.50 | 8.08 | 7.62 | 7.62 |
| Ex post quantity (TJ) | 31 | 40 | 37 | 39 | 33 | 25 | 25 |

Figure 3.2: ADL daily hub offers and daily hub bids in price bands (\$/GJ)

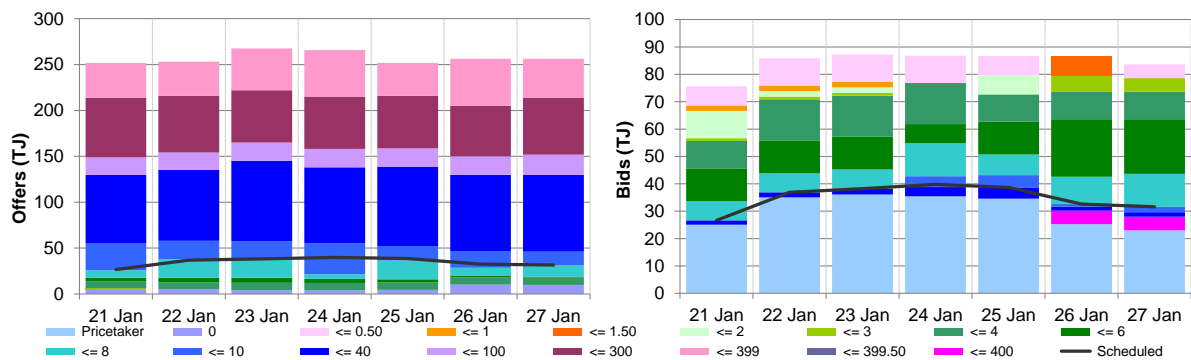


Figure 3.3: ADL net scheduled and allocated gas hub supply (excluding MOS)

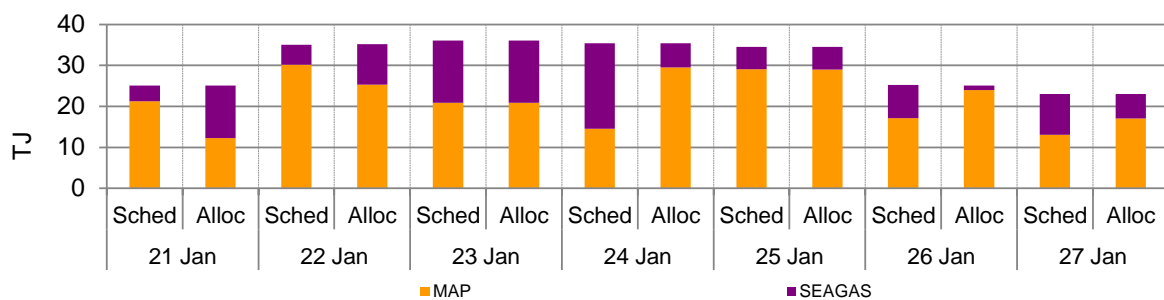
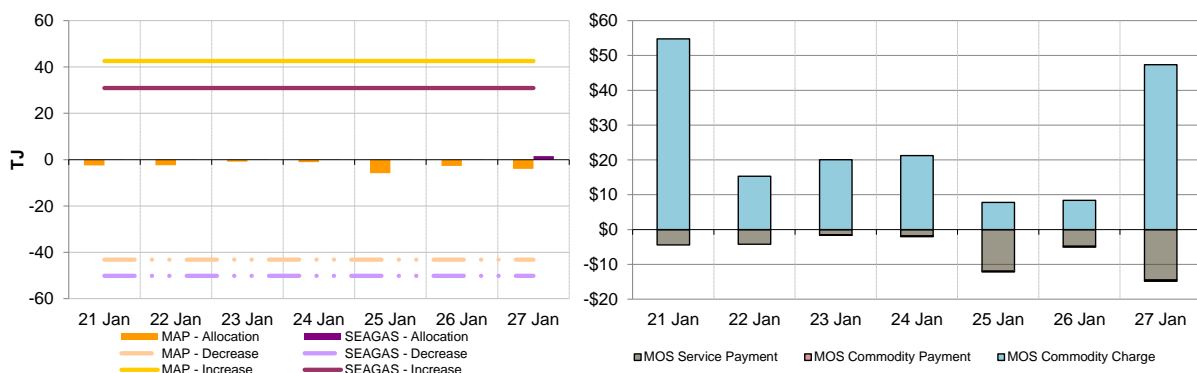


Figure 3.4: ADL MOS allocations (TJ), service payments and commodity payments/charges (\$000)



4. Brisbane STTM

The Brisbane STTM hub functions in the same way as the Sydney STTM hub. The same data that was presented for the Sydney hub is presented for the Brisbane hub in the figures below.

Figure 4.1: BRI STTM daily ex ante and ex post prices and quantities

| | Sun | Mon | Tue | Wed | Thu | Fri | Sat |
|-----------------------|------|------|------|------|------|------|------|
| Ex ante price (\$/GJ) | 8.26 | 8.11 | 8.26 | 7.56 | 7.60 | 8.15 | 8.15 |
| Ex ante quantity (TJ) | 112 | 128 | 129 | 130 | 127 | 108 | 106 |
| Ex post price (\$/GJ) | 8.26 | 8.11 | 8.26 | 7.56 | 7.56 | 7.87 | 7.74 |
| Ex post quantity (TJ) | 113 | 128 | 131 | 131 | 125 | 106 | 103 |

Figure 4.2: BRI daily hub offers and daily hub bids in price bands (\$/GJ)

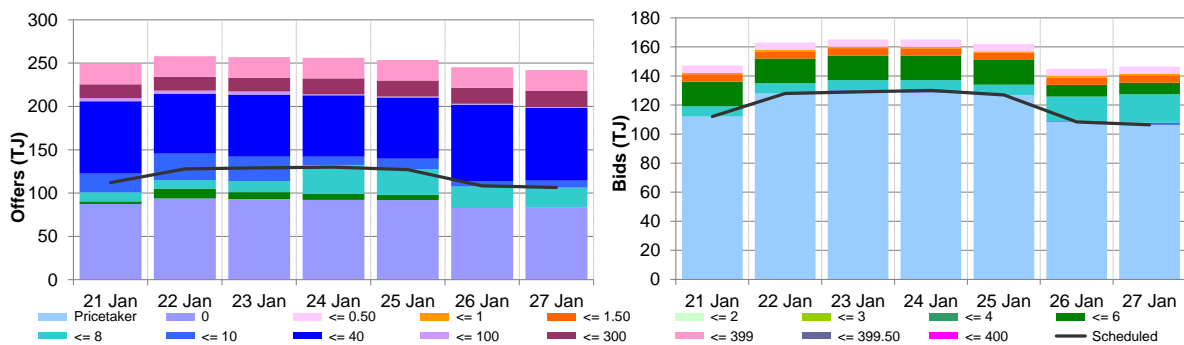


Figure 4.3: BRI net scheduled and allocated gas hub supply (excluding MOS)

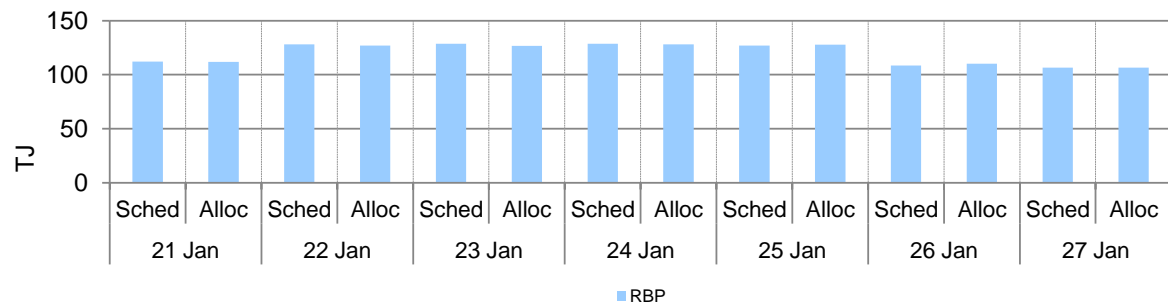
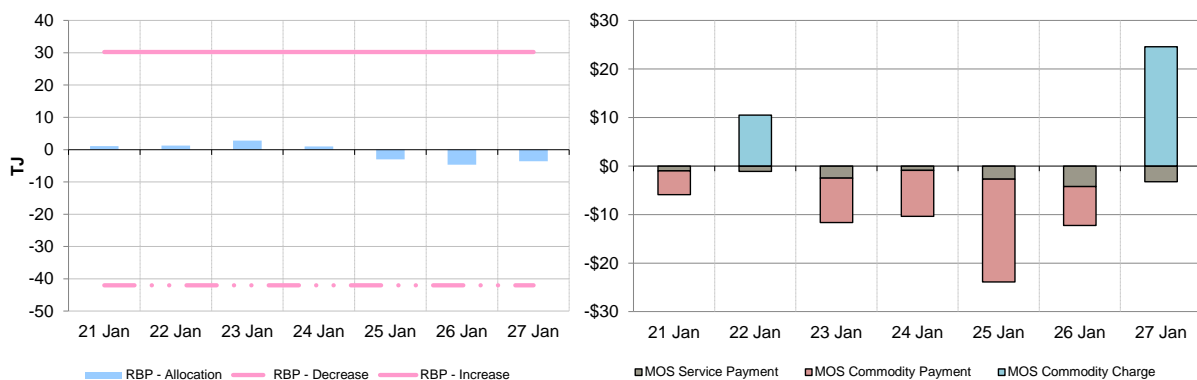


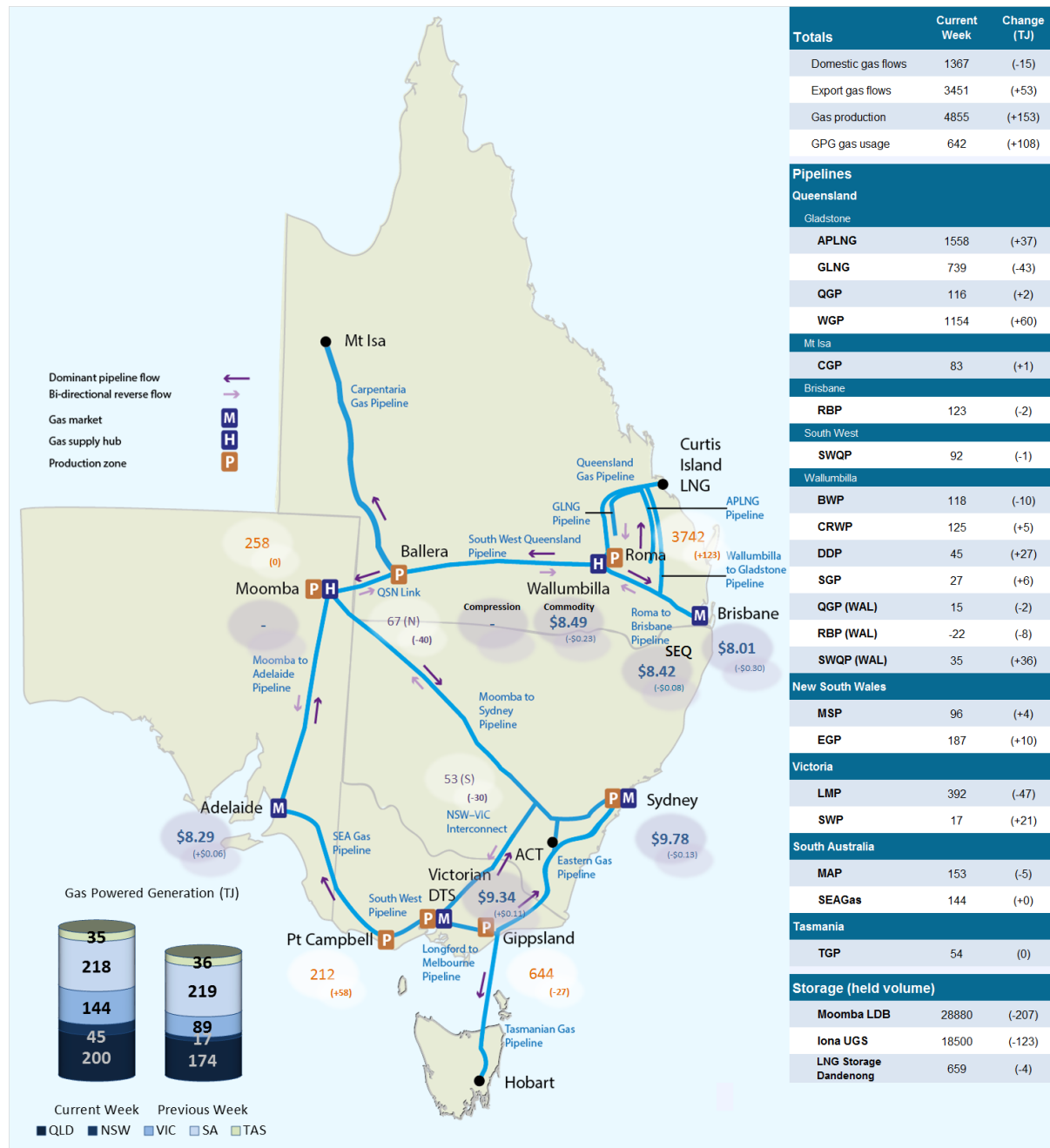
Figure 4.4: BRI MOS allocations (TJ), service payments and commodity payments/charges (\$000)



5. National Gas Bulletin Board

Figure 5.1 shows average daily actual flows for the current week⁹ from the Bulletin Board (changes from the previous week's average are shown in brackets). Average daily prices¹⁰ are provided for gas markets and gas supply hubs. Average daily quantities are provided for gas powered generation for each region.

Figure 5.1: Gas market data (\$/GJ, TJ); Bulletin Board flows (TJ)¹¹



⁹ Domestic gas flows are calculated as the total of: SA = MAP + SEAGAS; VIC = SWP + LMP + (flows towards Victoria on the 'NSW-VIC interconnect'); NSW/ACT = EGP + MSP; TAS = TGP; QLD (Brisbane) = RBP; QLD (Mt Isa) = CGP; and QLD (Gladstone) = QGP.

¹⁰ Export gas flows are calculated as the total of the APLNG pipeline; the GLNG pipeline; and the Wallumbilla to Gladstone pipeline.

¹¹ GPG volumes may include gas usage that does not show up on Bulletin Board pipeline flows.

¹⁰ GSH supply is the average daily volume of gas 'traded', while price is a volume weighted average. Optional hub services (for compression and redirection) are shown separately from commodity trades.

¹¹ Net flows are shown for Bulletin Board facilities, as outlined in the [user guide](#).

6. Gas Supply Hub

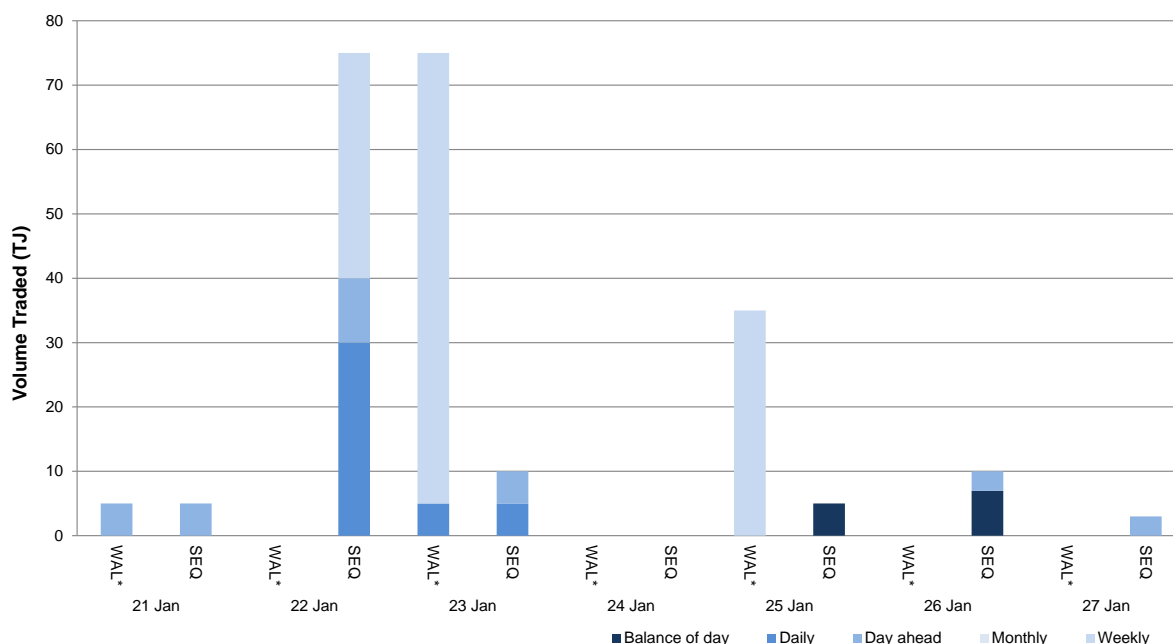
The gas supply hub was established at Wallumbilla in March 2014 to facilitate the voluntary trading of gas between participants, with products listed for sale and purchase at delivery points on three major connecting pipelines. There are separate products for each trading location and delivery period (daily, day-ahead, balance-of-day, weekly and monthly products).¹²

The Moomba hub commenced operation from June 2016 to further facilitate trading on the **MAP** and **MSP**, with trading between the two hubs on the SWQP via a spread product (representing the price differential between the hubs). From October 2016, the addition of a Wallumbilla Compression Product was introduced to facilitate the supply hub's transition from three different trading locations into one. From March 2017, Wallumbilla transitioned into an optional hub services model, replacing the three trading locations (QGP, SWQP and RBP) with a single product at Wallumbilla (**WAL**) and an in-pipe RBP trading location at South East Queensland (**SEQ**).

This week there were 23 trades for 223 TJ of gas at a volume weighted price of \$8.46/GJ. These consisted of 5 trades at WAL (115 TJ at \$8.49/GJ) and 18 trades at SEQ (108 TJ at \$8.42/GJ). There was one spread product traded.

Figure 6.1 shows the quantity of gas traded by product type for each trading day on pipeline trading locations in the Wallumbilla and Moomba Gas Supply Hubs.¹³

Figure 6.1: GSH traded quantities



Australian Energy Regulator February 2018

¹² Additional information on trading locations and available products is detailed in the [user guide](#).

¹³ Non-netted (off-market) trades, allowing the selection of specific delivery point at a trading location, are included with other Wallumbilla trades (WAL*).