

Attachment 2

Nairne and Littlehampton Trunk Main
November 2018

Consumer
MIRN
Proposed Load
Location

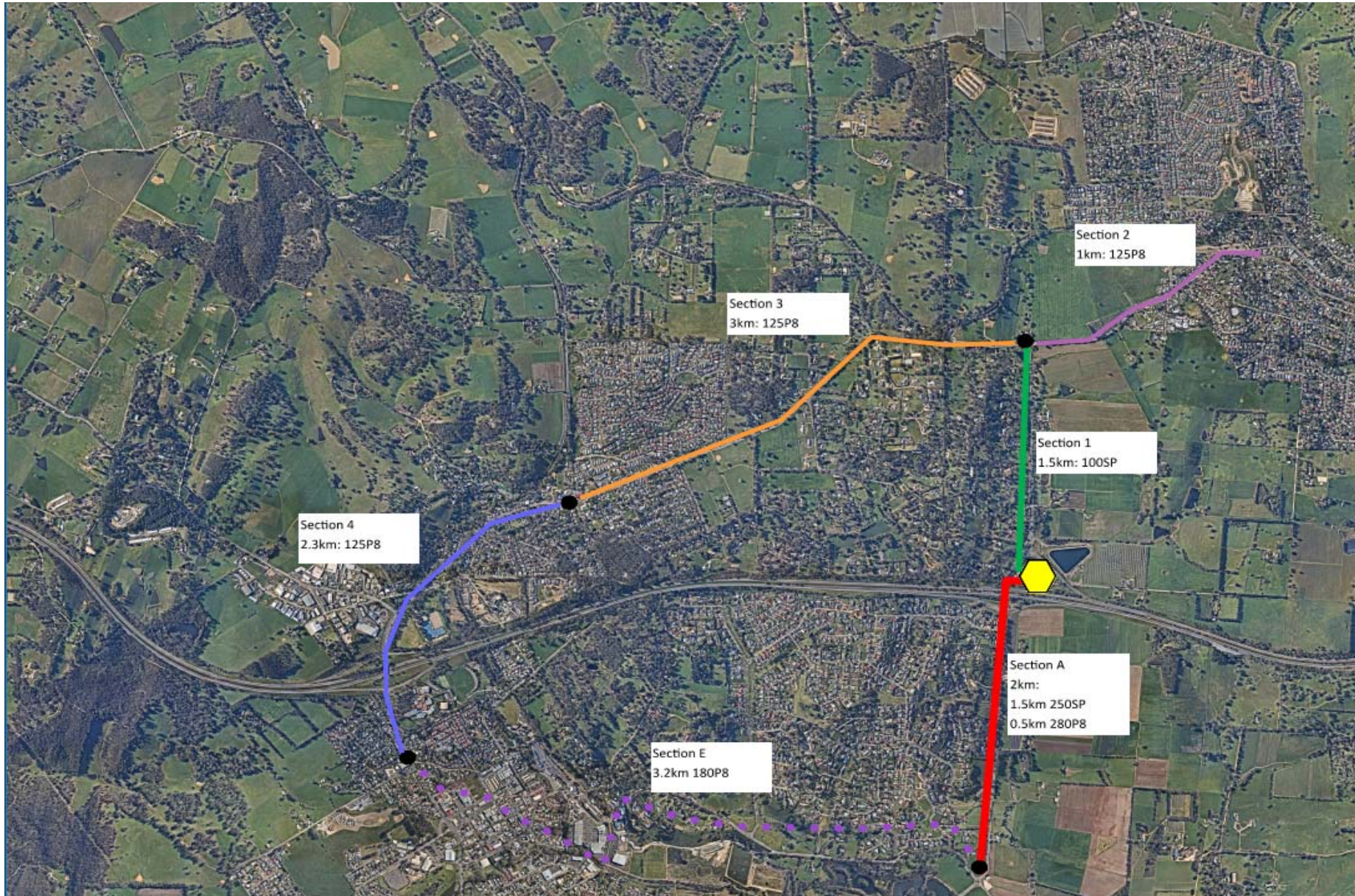
Mount Barker Trunk Main Reticulation Design
 NA
 Total 30 year forecasted load ~ Nairne and Little Hampton
 Mount Barker, South Australia

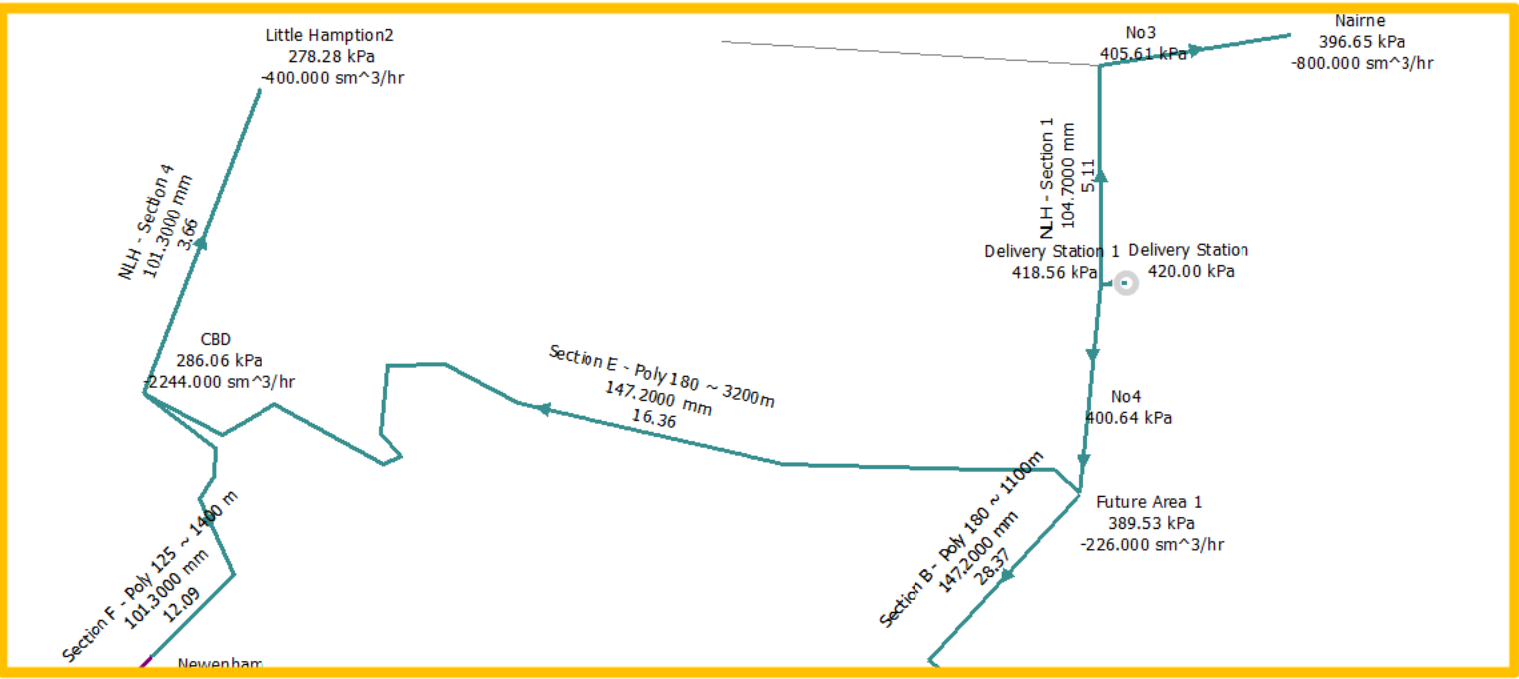
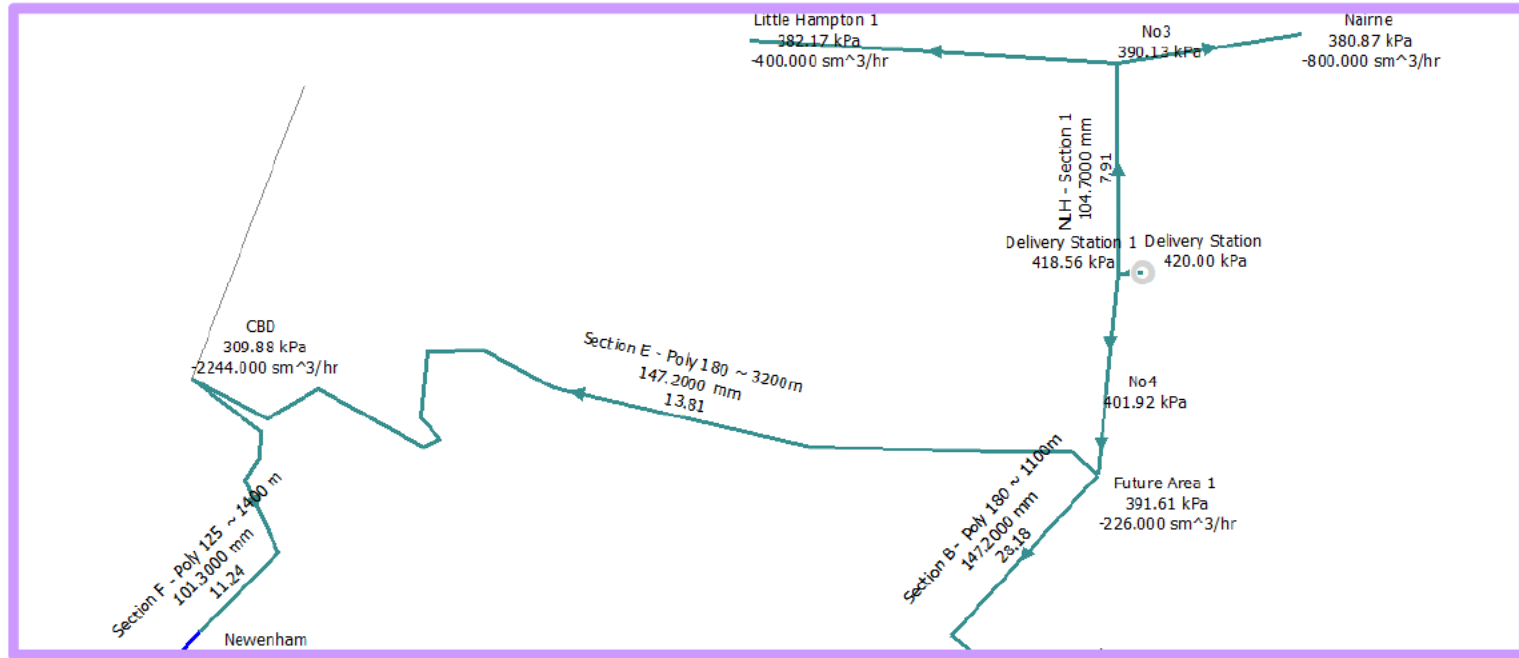
Operating Conditions

#	Details	Supply Pressure	Proposed Load (m3/hr)	Total Length (km)	Indicative Cost (\$ Million)	Comments
Design Case 3 - 181116 Additional Cost to Littlehampton and Nairne	Option 1 - Littlehampton and Nairne supplied from Gate Station	420	11,598	4.8	2.88	Assumed Section 1 is steel for temperature recovery. 30% contingency
	Option 2 - Littlehampton supplied via CBD and Nairne supplied from Gate Station			5.5	2.93	Assumed Section 1 is steel for temperature recovery. Includes HDD under Freeway 30% contingency

Notes

- Labour Rate for 125mm poly in Sections 2, 3 and 4 (refer MAP for section details) increased to [REDACTED] due to Old Princes Highway and Adelaide Road being DPTI roads which necessitates increased reinstatement
- Included [REDACTED] in Section 4 for a HDD under the South Eastern Freeway





Nairne and Littlehampton Combined From Gate Station	Length	Load	Material	Size	Cost
Section 1			1200 Steel	100	
Section 2			800 Poly	125	
Section 3			400 Poly	125	
Total			1200		

Nairne (From GS) and Littlehampton (From CBD) Separate	Length	Load	Material	Size	Cost
Section 1			800 Steel	100	
Section 2			800 Poly	125	
Section 4			400 Poly	125	
Total			1200		

NLH Section 1

Category	Description	No. Items / Metres	\$/Item	Cost \$	Total Cost \$
Materials					
Steel Pipe	100mm Steel PE Coated				
Subtotal - Pipe					75000
Fittings	% of pipe costs				
Subtotal - Materials					93,750
Labour					
Direct Burial Labour - Steel	100mm Steel				
Subtotal - Labour					637500
Project Contingency	% of project subtotal				
TOTAL					950,625

NLH Section 2

Category	Description	No. Items / Metres	\$/Item	Cost \$	Total Cost \$
Materials					
Poly Pipe	125mm Polyethylene SDR 11 PMT				
Subtotal - Pipe					16380
Fittings	% of pipe costs				
Subtotal - Materials					20,475
Labour					
Direct Burial Labour - Poly	90mm to 125mm Polyethylene (Regional)				
Subtotal - Labour					350000
Project Contingency	% of project subtotal				
TOTAL					481,618

NLH Section 3

Category	Description	No. Items / Metres	\$/Item	Cost \$	Total Cost \$
Materials					
Poly Pipe	125mm Polyethylene SDR 11 PMT				
Subtotal - Pipe					49140
Fittings	% of pipe costs				
Subtotal - Materials					61,425
Labour					
Direct Burial Labour - Poly	90mm to 125mm Polyethylene (Regional)				
Subtotal - Labour					1050000
Project Contingency	% of project subtotal				
TOTAL					1,444,853

NLH Section 4

Category	Description	No. Items / Metres	\$/Item	Cost \$	Total Cost \$
Materials					
Poly Pipe	125mm Polyethylene SDR 11 PMT				
Subtotal - Pipe					37674
Fittings	% of pipe costs				
Subtotal - Materials					47,093
Labour					
Direct Burial Labour - Poly	90mm to 125mm Polyethylene (Regional)				
Freeway Crossing	HDD under freeway				
Subtotal - Labour					1105000
Project Contingency	% of project subtotal				
TOTAL					1,497,720