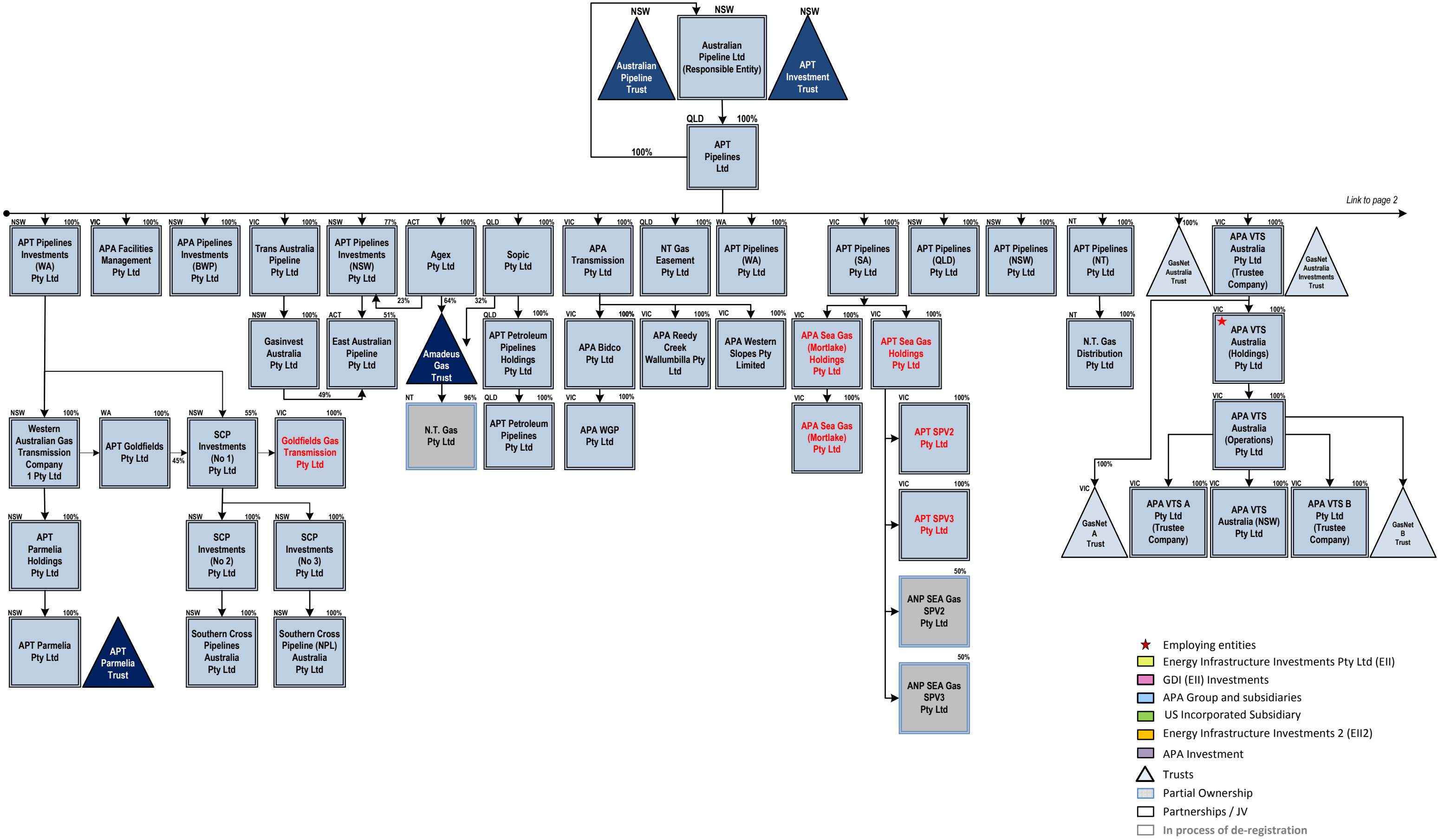
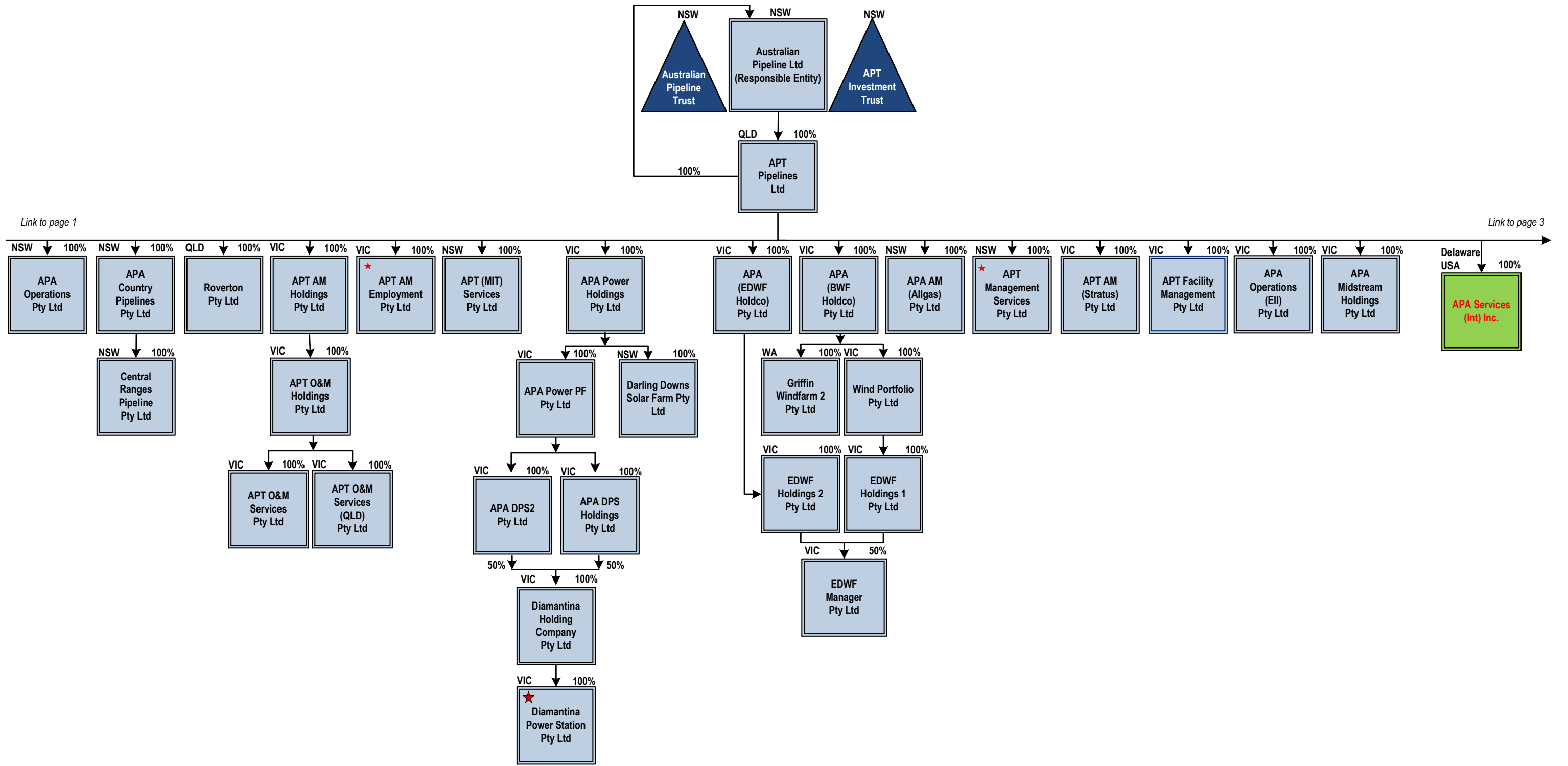


APA Group Organisational Chart

4 August 2017

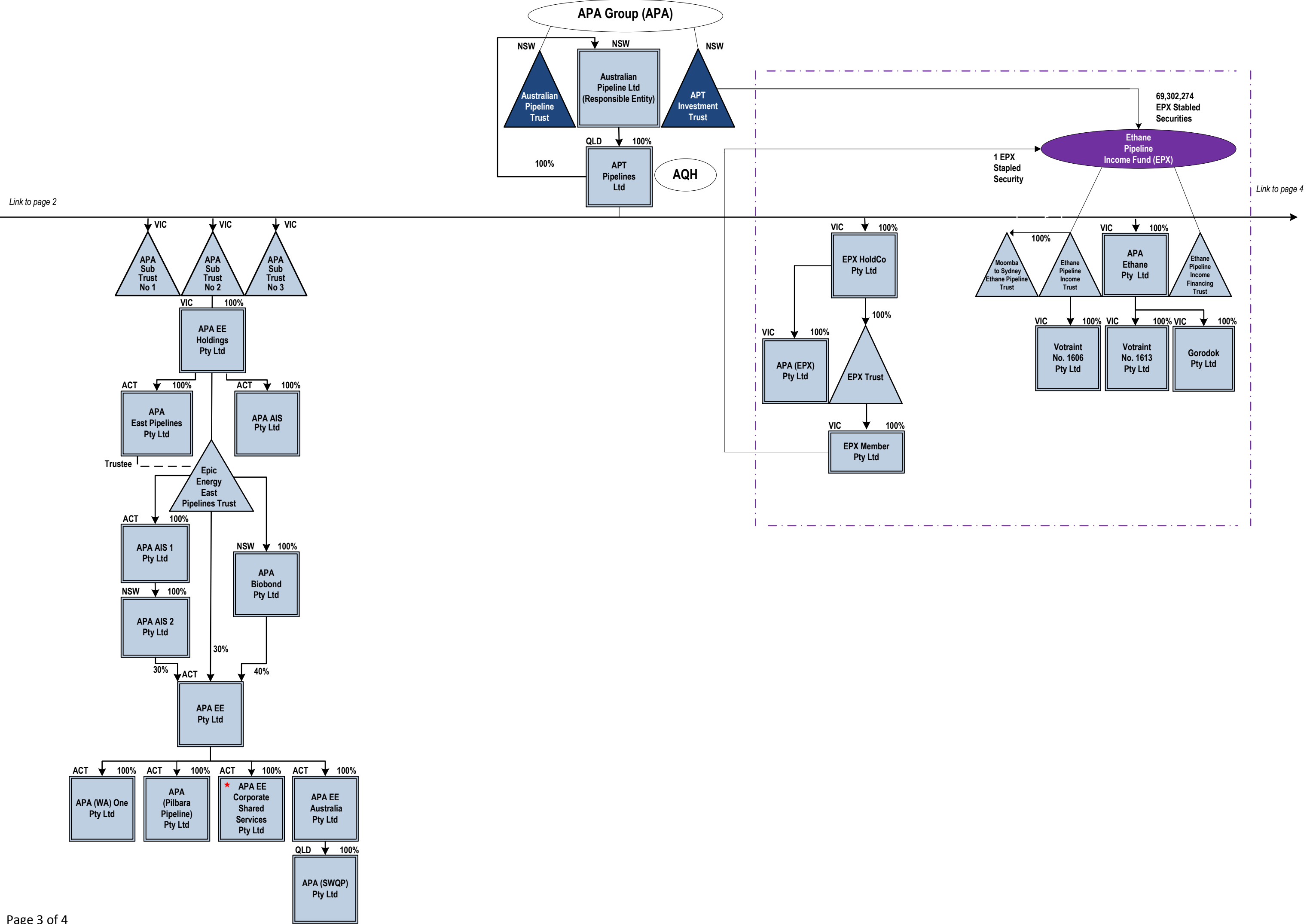


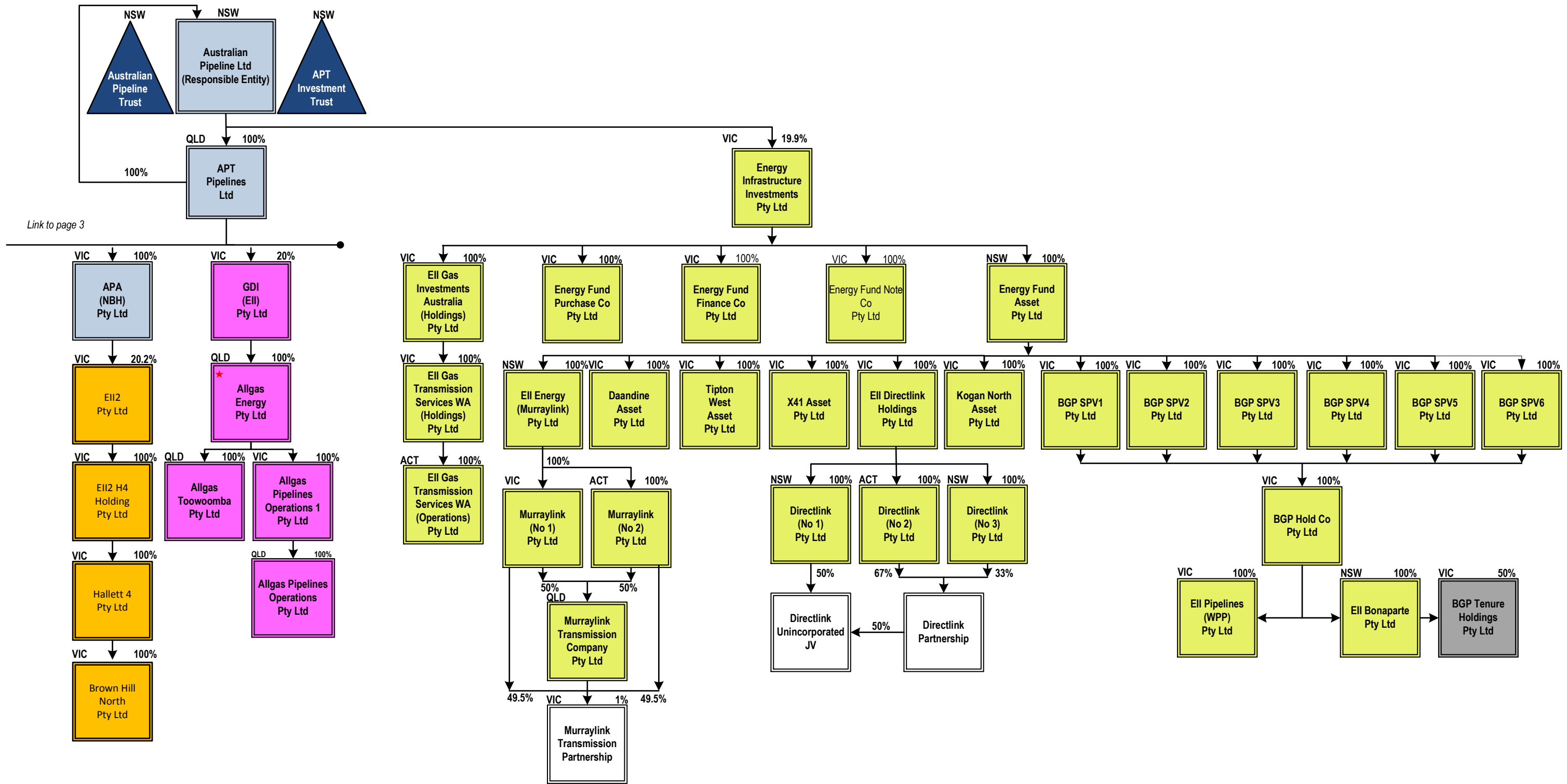
- ★ Employing entities
 - Energy Infrastructure Investments Pty Ltd (EII)
 - GDI (EII) Investments
 - APA Group and subsidiaries
 - US Incorporated Subsidiary
 - Energy Infrastructure Investments 2 (EII2)
 - APA Investment
 - Trusted
 - Partial Ownership
 - Partnerships / JV
 - In process of de-registration
- Red text - Wholly owned entities which do not guarantee APA Group's finance facilities



[Link to page 1](#)

[Link to page 3](#)





Link to page 3