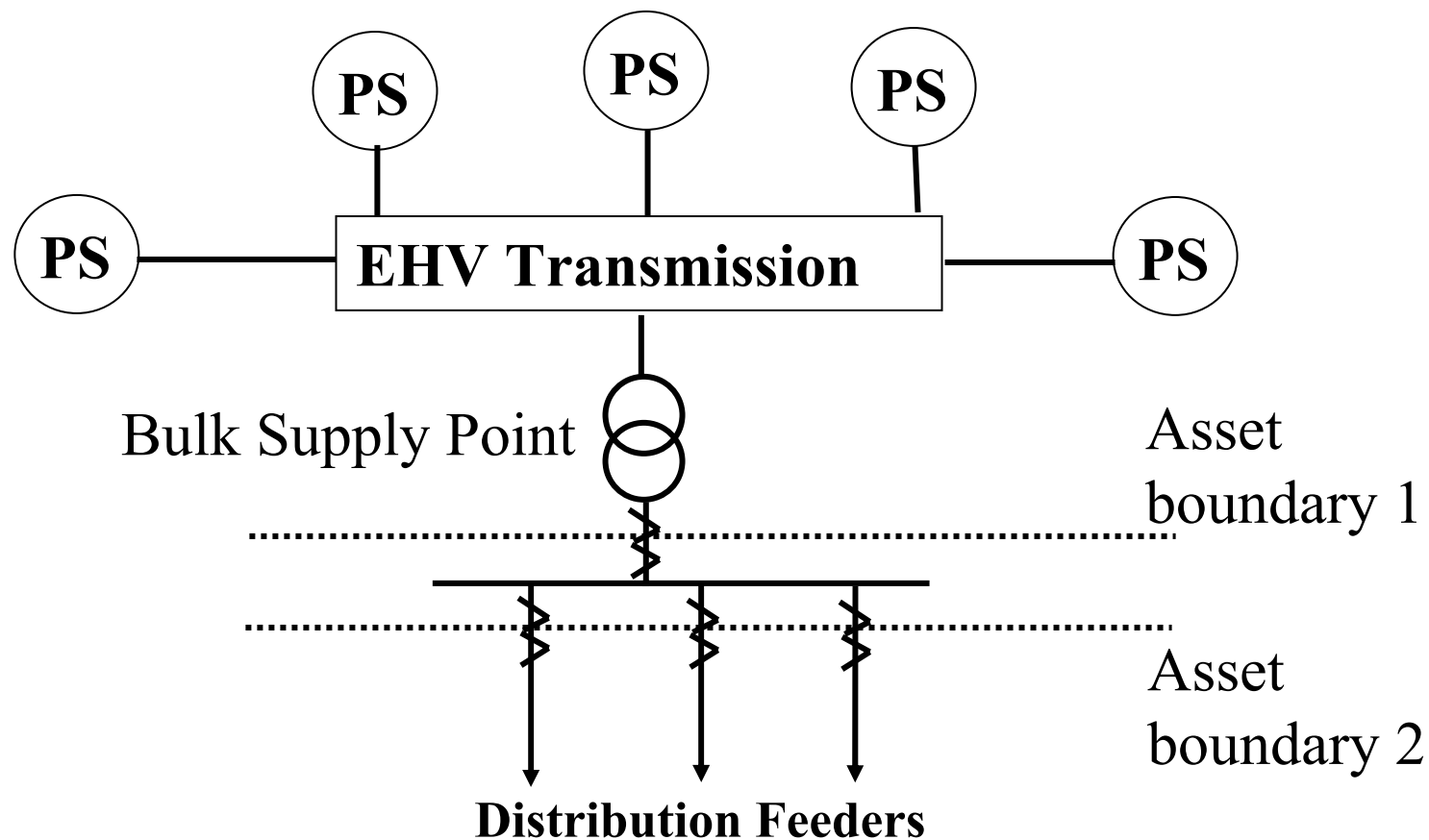
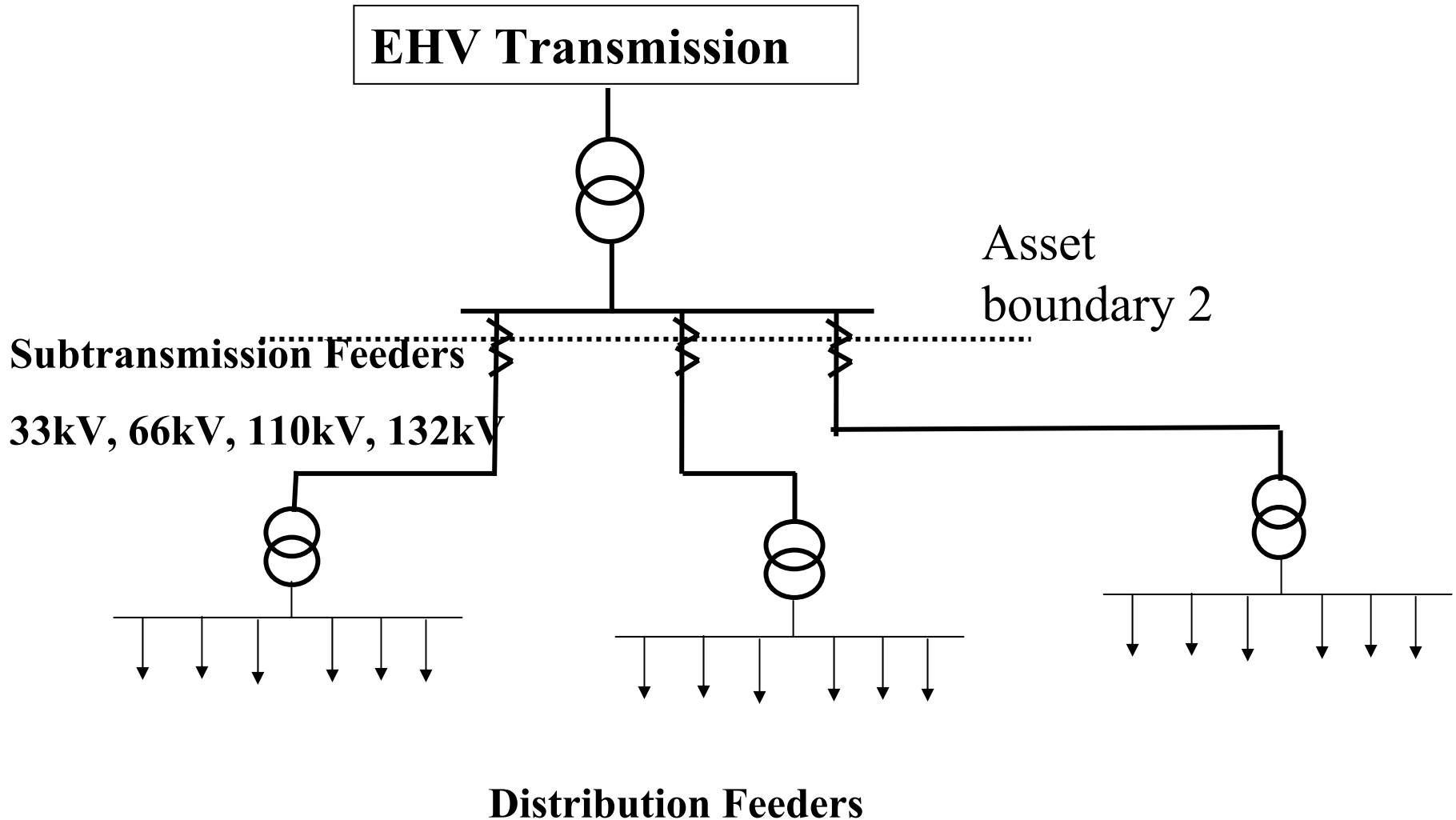


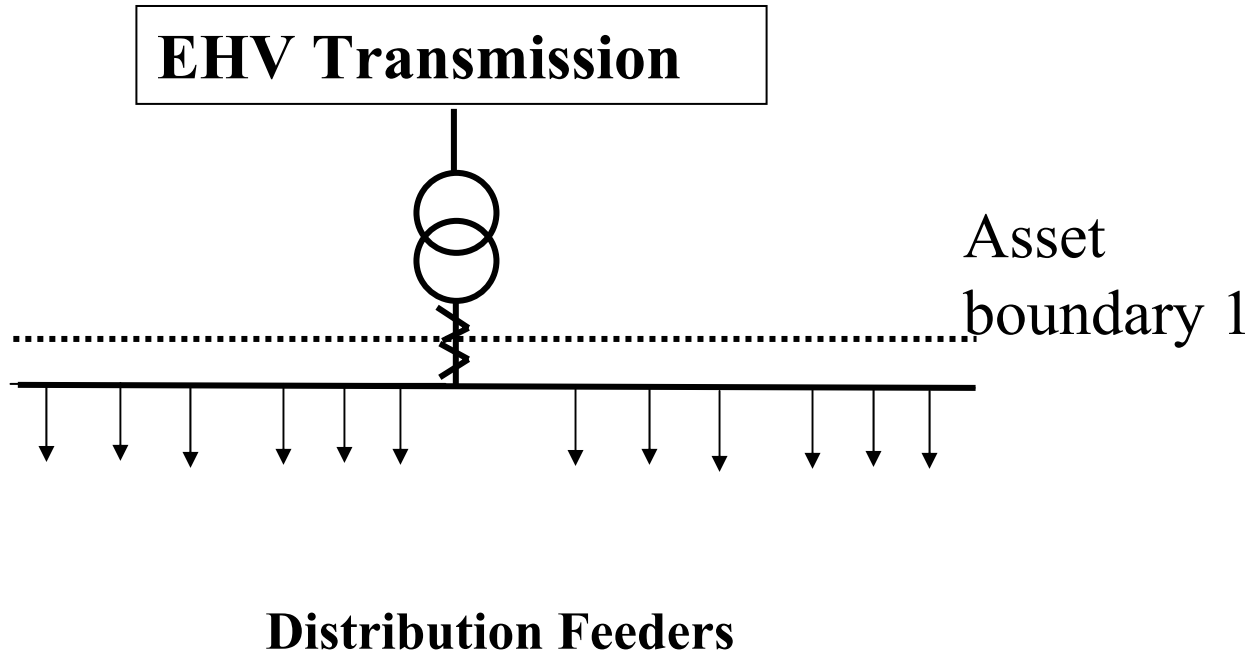
Generation, Transmission & Distribution



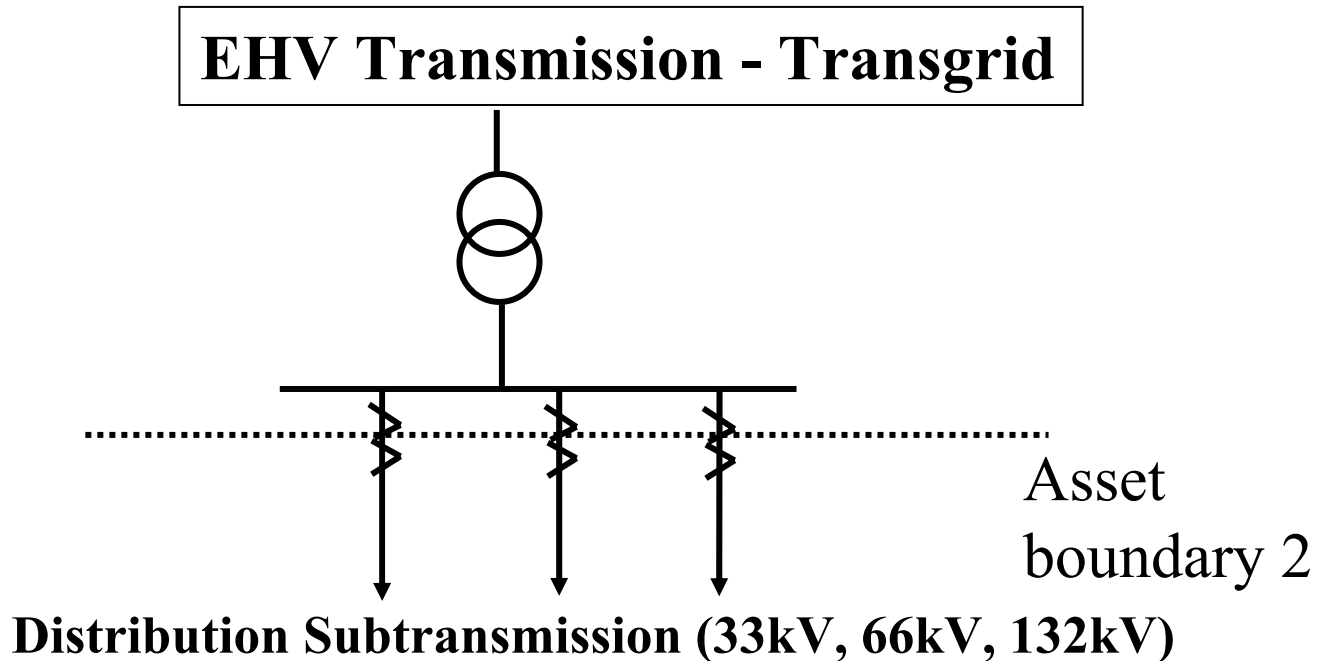
Transmission & Subtransmission



Transmission & Distribution



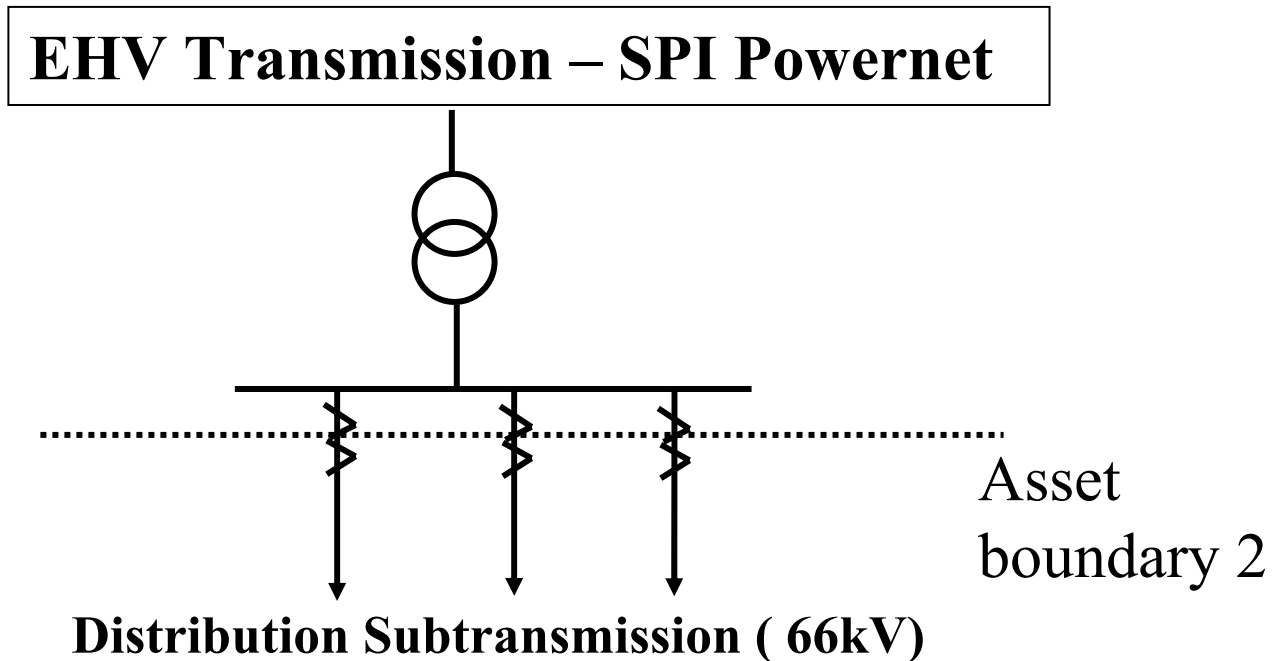
NSW T&D subtransmission



Bulk supply points: 30 (incl. Subs with distribution fdrs)

Customers: 2.2 Million (70,000 per sub)

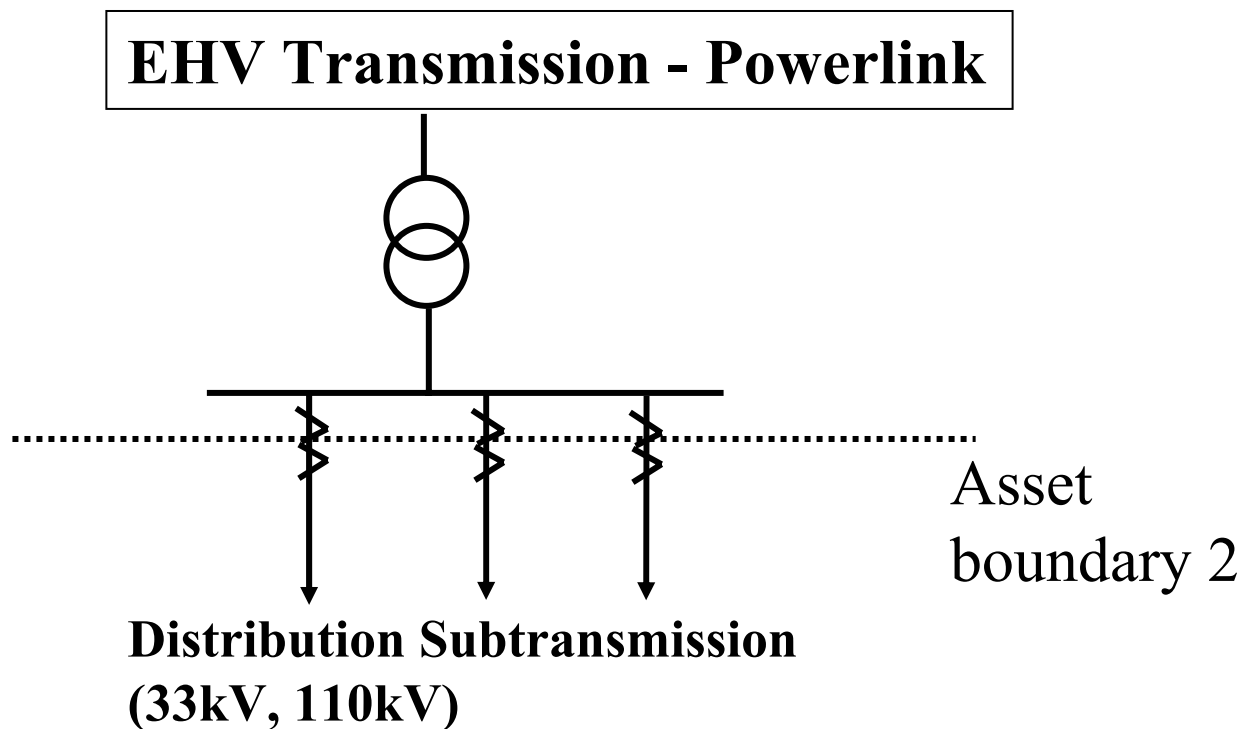
Vic T&D subtransmission



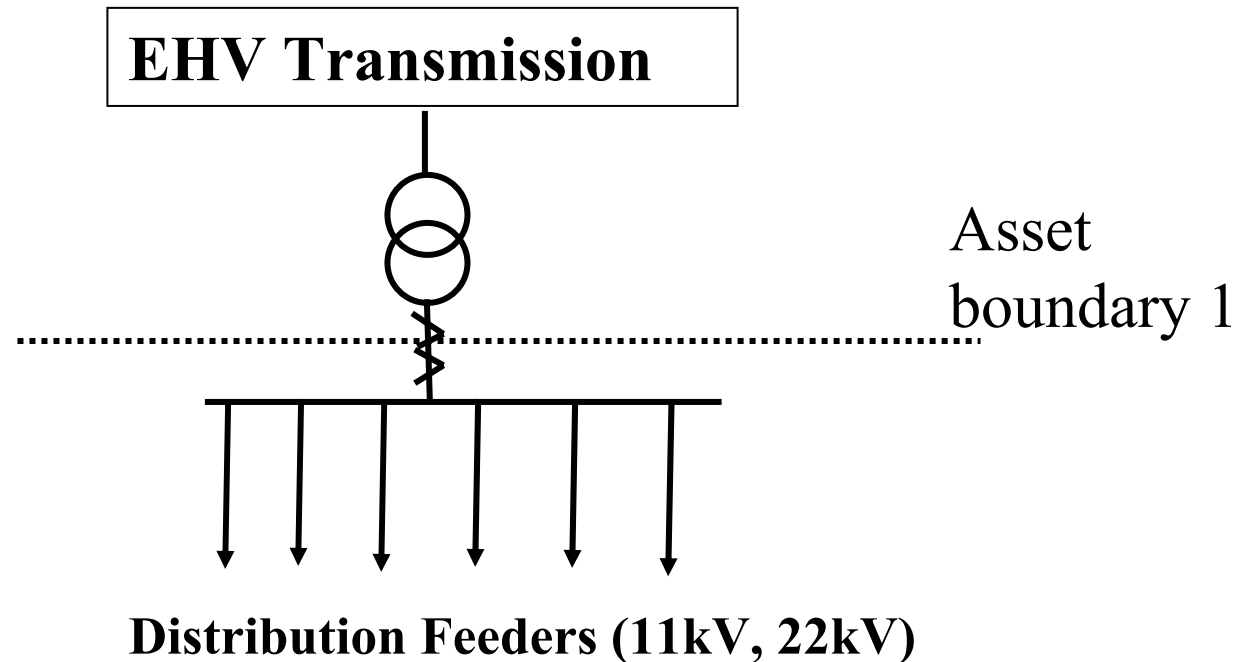
Bulk supply points: 11

Customers: 1.5 Million (130,000 per sub)

Queensland T&D subtransmission



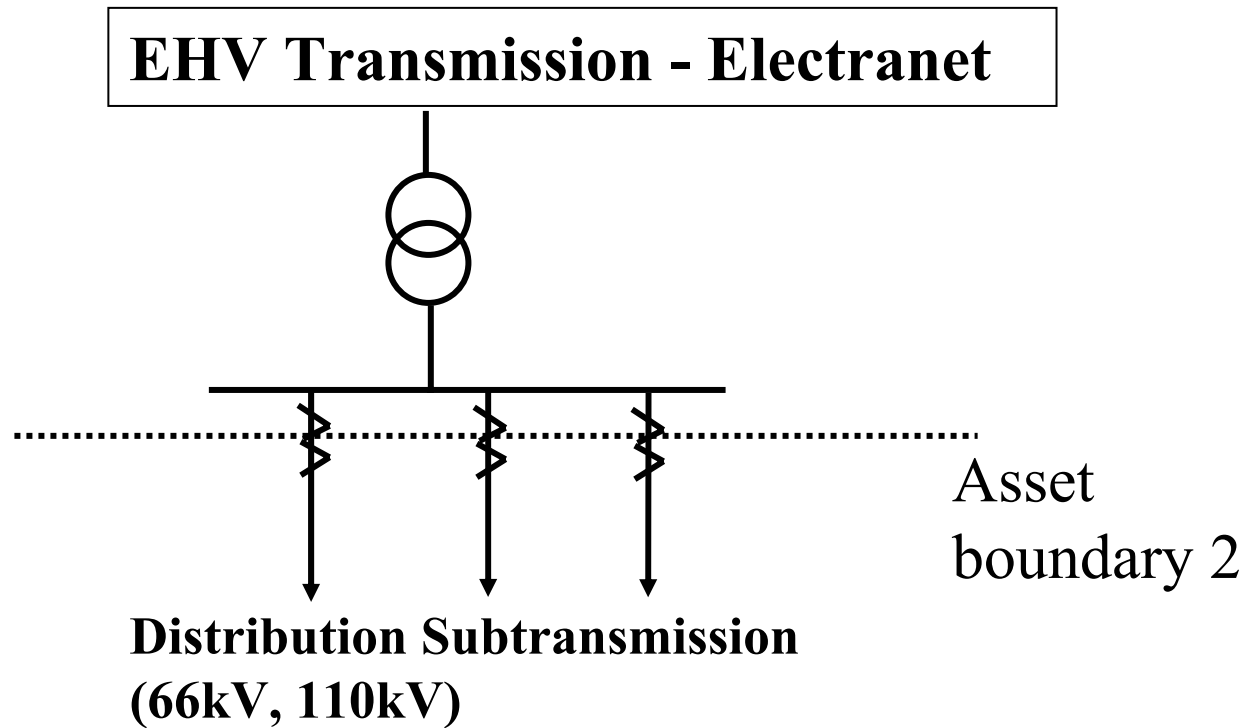
Queensland Distribution



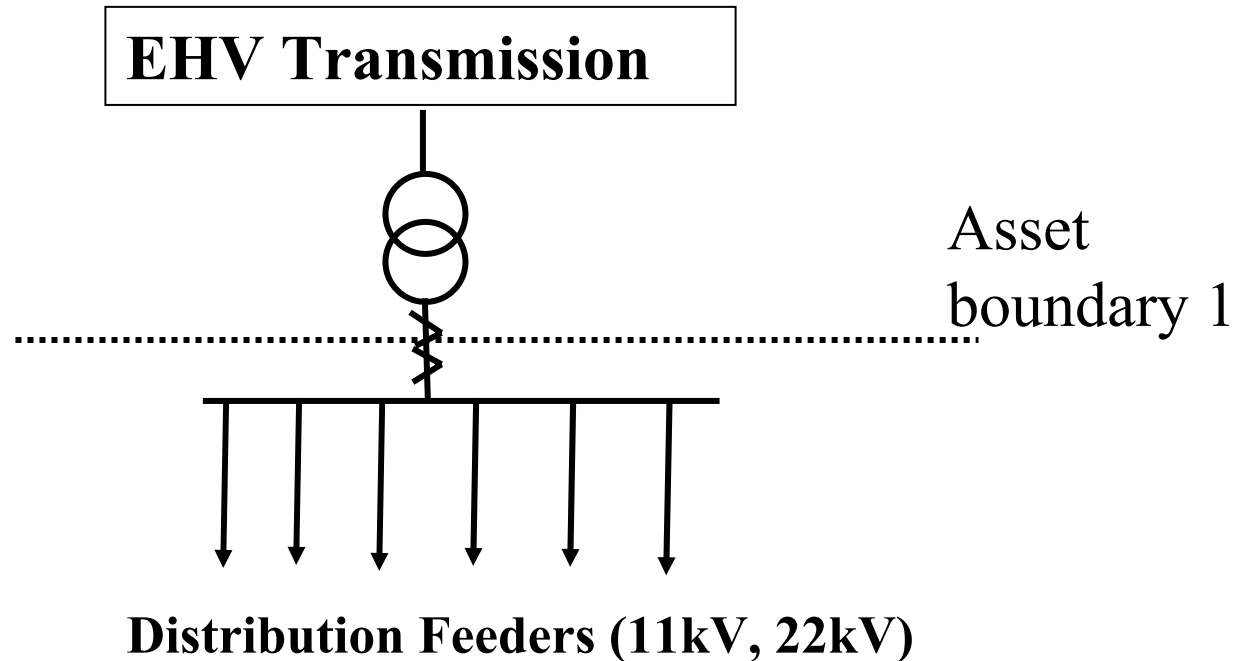
Bulk supply points: 80 (incl. Subs with subtransmission)

Customers: 1.5 Million (20,000 per sub)

South Australia T&D subtransmission



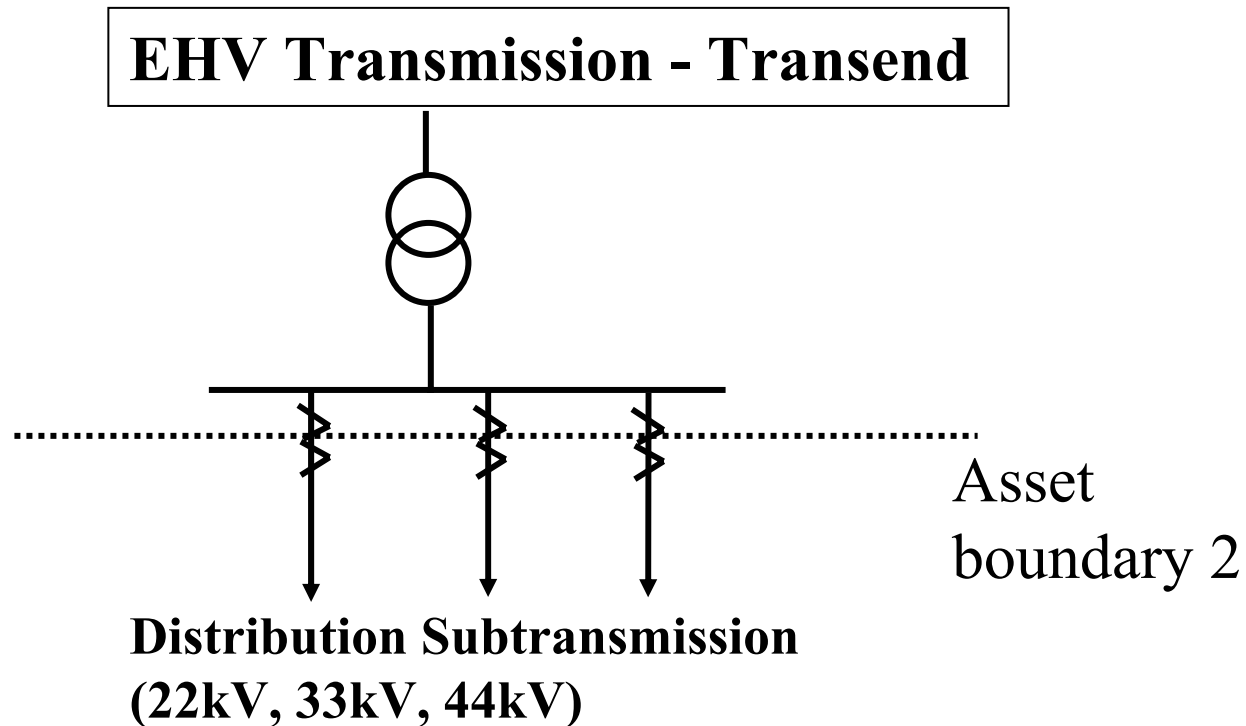
South Australia Distribution



Bulk supply points: 77 (incl. Subs with subtransmission)

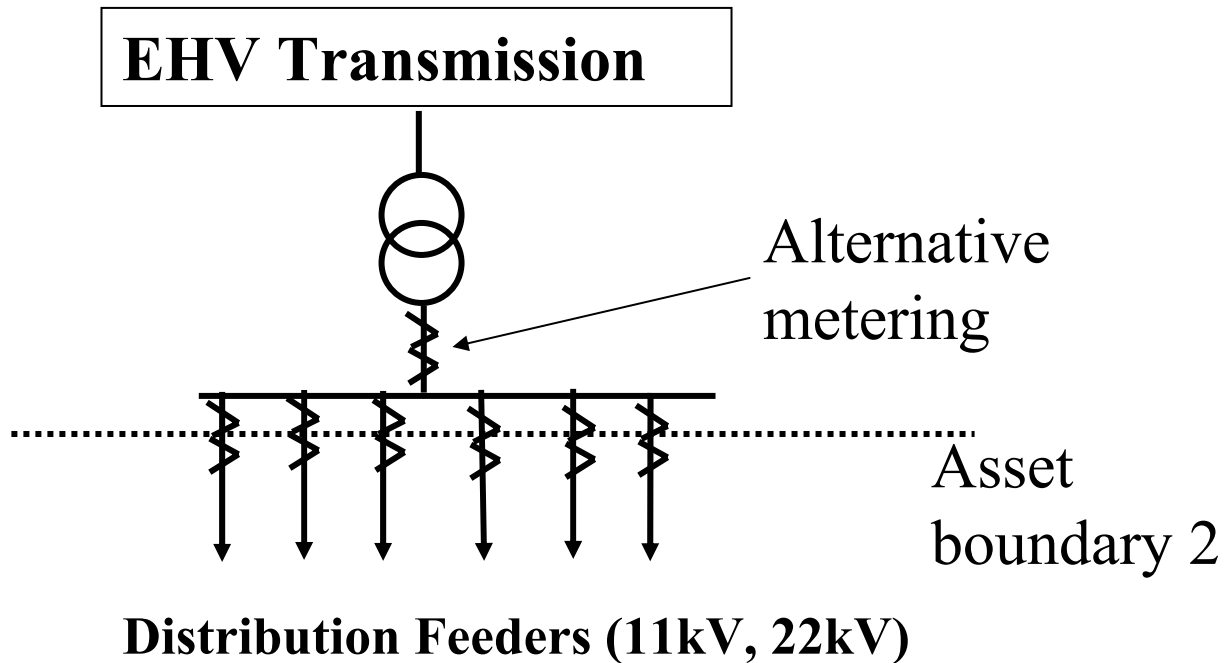
Customers: 0.5 Million (7,000 per sub)

Tasmania T&D subtransmission



Bulk supply points: 4 subtransmission

Tasmania T&D



Bulk supply points: 41 (incl subtransmission supply points)

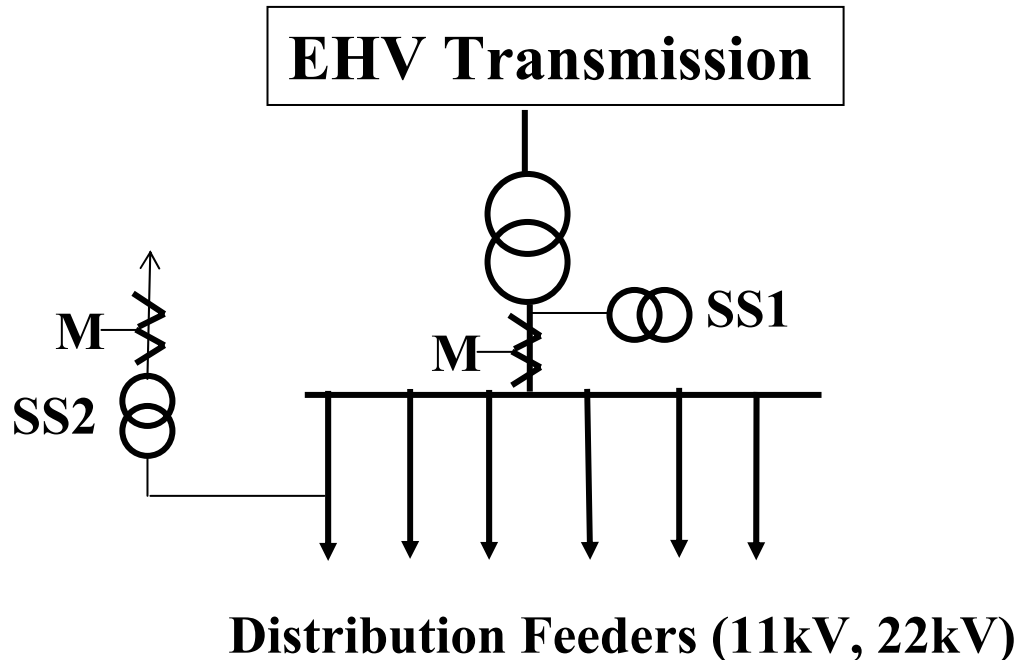
Customers: 0.25 Million (6,000 per sub.)

Impact on Tasmania

- Transend energies spread more widely than Mainland authorities. 300 distribution 11kV and 22kV CBs
- O&M by Transend higher.
- CAPEX by Transend higher.
- Supply reliability boundary not as clear.

- More consistent for ACCC, if Aurora assumes all distribution responsibilities, and Transend focuses fully on transmission issues.

Station Services



SS1 energy not accounted for & hidden in transmission losses.

SS2 energy is accounted for.

Energy Losses

- Transmission losses in Tasmania include station services at 40 substations – one per 6,000 customers.
- SS energy is a small part of the overall energy transmitted, but a much larger proportion of the transmission losses.
- SS energy is accounted for in Sth Aust.
- SS energy in Vic & NSW is much less per customer – one sub per 100,000 customers.
- Qld – if supplied from outside sub, accounted for
 - if supplied downstream of the Wholesale metering point, then excluded from transmission losses.

Questions

- Does ACCC want consistency between States in the bases of asset valuation and energy accountability?
- **If YES:**
- For Tasmania, start transition in this Regulatory period.
 - Re-development of a bulk supply point to include transfer of O&M responsibilities for distribution feeder CBs.
 - Transfer responsibilities for zone substations at 110/11kV.
 - Account for energy used inside all transmission substations.
- **BENEFITS:** Transend able to focus on transmission.
 - Asset boundaries will align with supply reliability boundaries
 - ACCC will have better bases for performance comparisons.