

Attachment 2 – 2019-24 Revised TSS
Revised Indicative NUOS pricing schedule
PUBLIC

January 2019



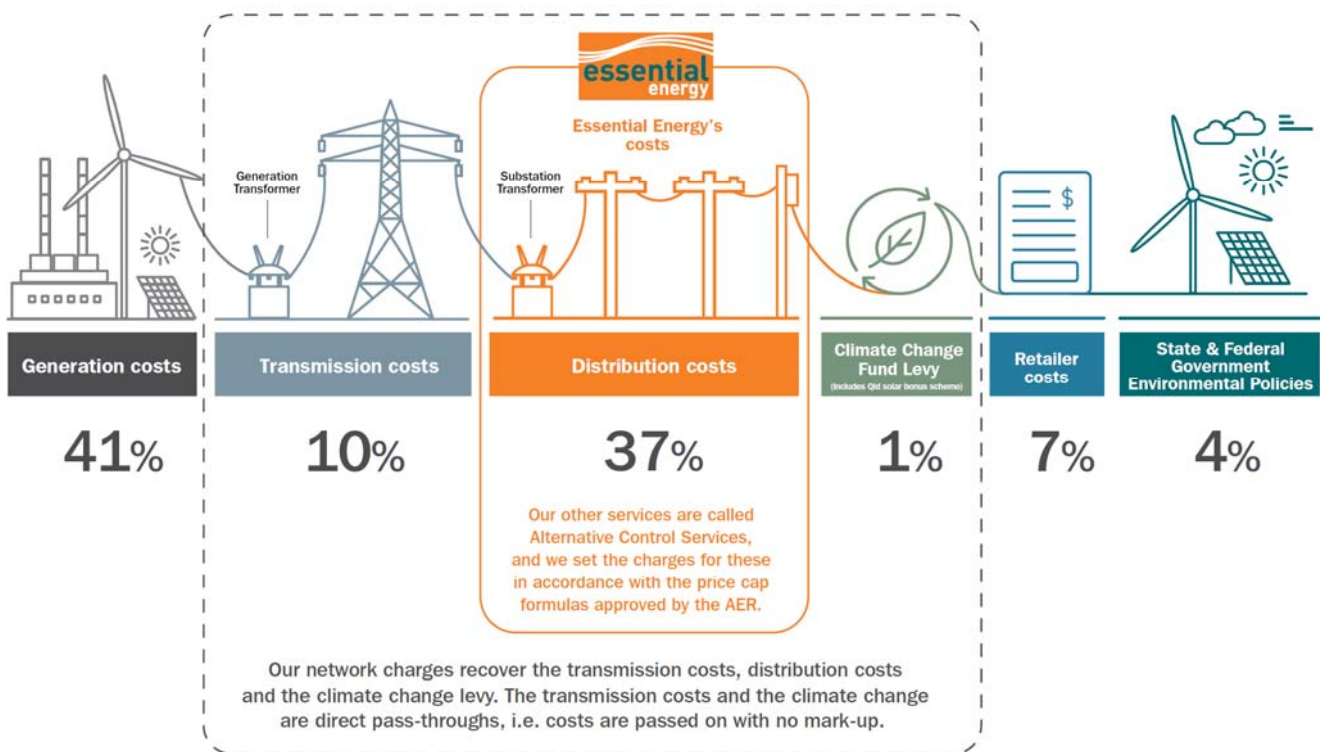
Table of Contents

| | |
|--|-----------|
| Network Charges | 3 |
| Indicative Network Charge Levels | 4 |
| Factors that may cause network charges to vary from these indicative levels | 4 |
| 2018/19 – Current Network Use of System (NUOS) charges | 5 |
| Indicative 2019/20 – Network Use of System (NUOS) charges | 6 |
| Indicative 2020/21 – Network Use of System (NUOS) charges | 7 |
| Indicative 2021/22 – Network Use of System (NUOS) charges | 8 |
| Indicative 2022/23 – Network Use of System (NUOS) charges | 9 |
| Indicative 2023/24 – Network Use of System (NUOS) charges | 10 |
| Commercial in Confidence – Indicative Site Specific charges | 11 |
| Modification History | 15 |

Network Charges

Our charges include Essential Energy's distribution costs as well as recovery of two additional components:

- > Distribution costs, which are Essential Energy's cost to operate and maintain the distribution network and are the subject of this draft regulatory proposal.
- > Transmission costs, which are the responsibility of TransGrid and Powerlink to operate the transmission networks and are directly passed through to customers by Essential Energy and no additional mark-ups are applied.
- > Climate change fund levy and contributions to the Queensland Solar Bonus Scheme that are passed through to customers by Essential Energy and no additional mark-ups are applied.



Indicative Network Charge Levels

The indicative network charges presented in this Attachment are consistent with Essential Energy's Revised 2019-24 Tariff Structure Statement (TSS) and are modelled on the basis of Essential Energy's Revised 2019-24 Regulatory Proposal.

Factors that may cause network charges to vary from these indicative levels

There are a number of factors that are outside of Essential Energy's control that may affect the implementation of the network charges over the period covered by the TSS.

The actual charges that customers will pay in the next regulatory period will depend on:

- > The AER's final distribution determination for Essential Energy for the 2019-24 regulatory period
- > Any updates to energy consumption forecasts
- > The transmission costs passed through to Essential Energy
- > The jurisdictional schemes costs (such as the NSW Climate Change Fund and the QLD Solar Bonus Scheme) that are passed through to Essential Energy
- > Cost of debt placeholder rates (based on current market information) which are updated annually
- > The outcome of a number of incentive schemes (e.g. STPIS for reliability) that apply to Essential Energy
- > Any approved cost pass through applications
- > Application of CPI annually, the indicative prices listed below are in \$2018-19.

Prices are all exclusive of GST.

Please refer to Section 4 of Essential Energy's Revised 2019-24 TSS for the definitions of the charging parameters used in Essential Energy's network charges.

2018/19 – Current Network Use of System (NUOS) charges

| Tariff Code | Description | Status | NAC | Energy c/kWh | | | | Demand \$/kVA/mth | | | | Capacity \$/kVA/mth |
|-------------|--------------------------------|------------|---------|--------------|---------|----------|----------|-------------------|---------|----------|----------|---------------------|
| | | | \$/year | Anytime | Peak | Shoulder | Off Peak | Anytime | Peak | Shoulder | Off Peak | Anytime |
| BLNN2AU | Residential Anytime | Default * | 290.23 | 10.2825 | | | | | | | | |
| BLNT3AU | Residential ToU | Optional | 290.23 | | 13.1290 | 11.8499 | 4.3514 | | | | | |
| BLNT3AL | Residential ToU_Interval meter | Default ** | 290.23 | | 13.6298 | 11.3968 | 4.3514 | | | | | |
| BLND1AR | Residential-Opt in Demand | Optional | 290.23 | | 3.9293 | 3.2979 | 2.0436 | | 3.9082 | | | |
| BLNC1AU | Controlled Load 1 | Optional | 32.45 | 2.1495 | | | | | | | | |
| BLNC2AU | Controlled Load 2 | Optional | 32.45 | 4.6175 | | | | | | | | |
| BLNN1AU | Small Business Anytime | Default * | 290.23 | 14.2127 | | | | | | | | |
| BLNT2AU | ToU < 100MWh | Optional | 2296.91 | | 13.9944 | 12.6729 | 6.3828 | | | | | |
| BLNT2AL | Business ToU_Interval meter | Default ** | 510.43 | | 14.5175 | 12.1996 | 6.1741 | | | | | |
| BLNT1AO | ToU > 100 MWh/yr | Default | 2296.91 | | 13.9944 | 12.6729 | 6.3828 | | | | | |
| BLND1AB | Small Business-Opt in Demand | Optional | 510.43 | | 5.1325 | 4.2074 | 2.5833 | | 6.3508 | | | |
| BLNT1SU | ToU > 100 MWh/yr South | Obsolete | 2353.59 | | 14.2125 | 12.6729 | 6.3828 | | | | | |
| BLND3AO | LV ToU Demand 3 Rate | Default | 5374.35 | | 3.9485 | 3.5907 | 2.3418 | | 9.8688 | 8.9289 | 2.1482 | |
| BLND3TO | LV ToU Demand-alternate tariff | Optional | 5374.35 | | 12.3039 | 11.1503 | 4.6461 | | 11.6551 | | | |
| BLNDTRS | Transitional Demand | Specific | 3527.89 | | 9.9761 | 9.0400 | 4.7664 | | 3.9475 | 3.5716 | 0.8593 | |
| BLNS1AO | LV ToU avg daily Demand | Optional | 5374.35 | | 3.6117 | 3.2860 | 2.2207 | | 10.5982 | 9.5888 | 2.4507 | |
| BLND1CO | LV 1 Rate Demand Central | Obsolete | 6929.42 | | 5.5626 | 5.0384 | 2.7209 | 15.7573 | | | | |
| BLND1SR | LV 1 Rate Demand Rural | Obsolete | 5374.35 | | 11.5170 | 10.4101 | 4.2332 | 10.4658 | | | | 3.8048 |
| BLND1SU | LV 1 Rate Demand Urban | Obsolete | 1446.01 | | 12.9849 | 11.7381 | 5.5654 | 10.2650 | | | | 3.8096 |
| BHND3AO | HV ToU mthly Demand | Default | 6652.58 | | 3.0267 | 2.7712 | 2.2597 | | 8.6575 | 7.8330 | 2.3440 | |
| BHNS1AO | HV ToU avg daily Demand | Optional | 6466.11 | | 3.0110 | 2.7569 | 2.2524 | | 9.1675 | 8.2944 | 2.4820 | |
| BHND1CO | HV 1 Rate Demand Central | Obsolete | 8891.62 | | 6.0331 | 6.0331 | 2.8212 | 11.4870 | | | | |
| BHND1SO | HV 1 Rate Demand South | Obsolete | 6627.76 | | 5.4774 | 5.4774 | 4.0634 | 8.2955 | | | | 3.0551 |
| BSSD3AO | Subtransmission 3 Rate Demand | Default | 6603.66 | | 3.7740 | 2.2770 | 1.8934 | | 3.3409 | 2.3817 | 0.9494 | |
| BLNP1AO | LV Public Lighting NUOS | Default | 257.49 | 15.3789 | | | | | | | | |
| BLNP3AO | LV Public Lighting ToU NUOS | Default | - | | 15.7440 | 14.2541 | 6.6550 | | | | | |

* These tariffs are the default for customers that do not have interval metering, and optional for other customers who meet the eligibility criteria

** These tariffs are the default for all new connections, meter upgrades and new technology installations and is optional for existing premises that have Interval capable meter

Indicative 2019/20 – Network Use of System (NUOS) charges

| \$2018/19 | | | NAC | Energy c/kWh | | | | Demand \$/kVA/mth | | | | Capacity \$/kVA/mth |
|-------------|--------------------------------|------------|----------|--------------|---------|----------|----------|-------------------|---------|----------|----------|---------------------|
| Tariff Code | Description | Status | \$/year | Anytime | Peak | Shoulder | Off Peak | Anytime | Peak | Shoulder | Off Peak | Anytime |
| BLNN2AU | Residential Anytime | Default * | 290.34 | 10.1598 | | | | | | | | |
| BLNT3AU | Residential ToU | Optional | 290.34 | - | 13.0785 | 11.7383 | 4.3281 | | | | | |
| BLNT3AL | Residential ToU_Interval meter | Default ** | 290.34 | - | 13.5710 | 11.2926 | 4.3281 | | | | | |
| BLND1AR | Residential-Opt in Demand | Optional | 290.34 | - | 4.0312 | 3.3280 | 2.0585 | | 3.8434 | | - | |
| BLNC1AU | Energy Saver 1 | Optional | 31.92 | 2.1626 | - | - | - | | | | | |
| BLNC2AU | Energy Saver 2 | Optional | 31.92 | 4.6048 | - | - | - | | | | | |
| BLNN1AU | Small Business Anytime | Default * | 290.34 | 14.0459 | - | - | - | | | | | |
| BLNT2AU | ToU < 100MWh | Optional | 2,067.22 | - | 13.9505 | 12.5686 | 6.3468 | | | | | |
| BLNT2AL | Business ToU_Interval meter | Default ** | 506.88 | - | 14.4650 | 12.1032 | 6.1415 | | | | | |
| BLNT1AO | ToU > 100 MWh/yr | Default | 2,067.22 | - | 13.9505 | 12.5686 | 6.3468 | | | | | |
| BLND1AB | Small Business-Opt in Demand | Optional | 506.88 | - | 5.5820 | 4.4599 | 2.6914 | | 6.2456 | | - | |
| BLNT1SU | ToU > 100 MWh/yr South | Obsolete | 2,353.59 | | 14.5556 | 12.5361 | 6.4160 | | | | | |
| BLND3AO | LV ToU Demand 3 Rate | Default | 5,285.29 | - | 4.0662 | 3.6139 | 2.3713 | | 9.7867 | 8.8547 | 2.1126 | |
| BLND3TO | LV ToU Demand-alternate tariff | Optional | 5,285.29 | - | 12.4474 | 10.8996 | 4.6374 | | 11.4619 | | | - |
| BLNDTRS | Transitional Demand | Specific | 3,676.26 | - | 9.0083 | 8.0913 | 4.3590 | | 4.8934 | 4.4273 | 1.0563 | |
| BLNS1AO | LV ToU avg daily Demand | Obsolete | 5,374.35 | | 3.7349 | 3.3260 | 2.2531 | | 10.5982 | 9.5888 | 2.4507 | |
| BLND1CO | LV 1 Rate Demand Central | Obsolete | 6,929.42 | | 5.7392 | 5.0634 | 2.7580 | 15.7573 | | | | |
| BLND1SR | LV 1 Rate Demand Rural | Obsolete | 5,374.35 | | 11.8303 | 10.3522 | 4.2713 | 10.4658 | | | | 3.8048 |
| BLND1SU | LV 1 Rate Demand Urban | Obsolete | 1,446.01 | | 13.3275 | 11.6538 | 5.6035 | 10.2650 | | | | |
| BHND3AO | HV ToU mthly Demand | Default | 6,542.35 | - | 3.1167 | 2.7932 | 2.2906 | | 8.5140 | 7.7032 | 2.3051 | |
| BHNS1AO | HV ToU avg daily Demand | Obsolete | 6,358.96 | - | 3.0902 | 2.7892 | 2.2834 | | 9.0156 | 8.1570 | 2.4409 | |
| BHND1CO | HV 1 Rate Demand Central | Obsolete | 8,891.62 | - | 6.2256 | 6.1357 | 2.8633 | 11.4870 | | | | |
| BHND1SO | HV 1 Rate Demand South | Obsolete | 6,627.76 | - | 5.6587 | 5.5911 | 4.1055 | 8.2955 | | | | 3.0551 |
| BSSD3AO | Subtransmission 3 Rate Demand | Default | 6,494.24 | - | 3.8430 | 2.3139 | 1.9258 | | 3.2855 | 2.3423 | 0.9337 | |
| BLNP1AO | LV Public Lighting NUOS | Default | 290.34 | 15.1983 | - | - | - | | | | | |
| BLNP3AO | LV Public Lighting ToU NUOS | Default | - | - | 15.9171 | 13.9115 | 6.6200 | | | | | |

* These tariffs are the default for customers that do not have interval metering, and optional for other customers who meet the eligibility criteria

** These tariffs are the default for all new connections, meter upgrades and new technology installations and is optional for existing premises that have Interval capable meter

Indicative 2020/21 – Network Use of System (NUOS) charges

| \$2018/19 | | | NAC | Energy c/kWh | | | | Demand \$/kVA/mth | | | | Capacity \$/kVA/mth |
|-------------|--------------------------------|------------|----------|--------------|---------|----------|----------|-------------------|---------|----------|----------|---------------------|
| Tariff Code | Description | Status | \$/year | Anytime | Peak | Shoulder | Off Peak | Anytime | Peak | Shoulder | Off Peak | Anytime |
| BLNN2AU | Residential Anytime | Default * | 293.28 | 10.0971 | | | | | | | | |
| BLNT3AU | Residential ToU | Optional | 293.28 | - | 13.2937 | 11.5131 | 4.3202 | | | | | |
| BLNT3AL | Residential ToU_Interval meter | Default ** | 293.28 | - | 13.7926 | 11.0794 | 4.3202 | | | | | |
| BLND1AR | Residential-Opt in Demand | Optional | 293.28 | - | 4.1298 | 3.3284 | 2.0664 | | 3.8167 | | - | |
| BLNC1AU | Energy Saver 1 | Optional | 31.69 | 2.1698 | - | - | - | | | | | |
| BLNC2AU | Energy Saver 2 | Optional | 31.69 | 4.5998 | - | - | - | | | | | |
| BLNN1AU | Small Business Anytime | Default * | 295.34 | 13.9619 | - | - | - | | | | | |
| BLNT2AU | ToU < 100MWh | Optional | 1,860.50 | - | 14.1742 | 12.3356 | 6.3307 | | | | | |
| BLNT2AL | Business ToU_Interval meter | Default ** | 508.32 | - | 14.6953 | 11.8826 | 6.1269 | | | | | |
| BLNT1AO | ToU > 100 MWh/yr | Default | 1,860.50 | - | 14.1742 | 12.3356 | 6.3307 | | | | | |
| BLND1AB | Small Business-Opt in Demand | Optional | 508.32 | - | 6.0570 | 4.7166 | 2.7939 | | 6.1804 | | - | |
| BLNT1SU | ToU > 100 MWh/yr South | Obsolete | 2,353.59 | | 14.8645 | 12.3673 | 6.4285 | | | | | |
| BLND3AO | LV ToU Demand 3 Rate | Default | 5,248.49 | - | 4.1570 | 3.6123 | 2.3824 | | 9.7526 | 8.8238 | 2.0979 | |
| BLND3TO | LV ToU Demand-alternate tariff | Optional | 5,248.49 | - | 12.6464 | 10.7026 | 4.6328 | | 11.3821 | | | - |
| BLNDTRS | Transitional Demand | Specific | 4,119.16 | - | 7.4961 | 6.5201 | 3.6985 | | 6.5017 | 5.8825 | 1.3986 | |
| BLNS1AO | LV ToU avg daily Demand | Obsolete | 5,374.35 | | 3.8244 | 3.3345 | 2.2654 | | 10.5982 | 9.5888 | 2.4507 | |
| BLND1CO | LV 1 Rate Demand Central | Obsolete | 6,929.42 | | 5.8743 | 5.0497 | 2.7713 | 15.7573 | | | | |
| BLND1SR | LV 1 Rate Demand Rural | Obsolete | 5,374.35 | | 12.0940 | 10.2481 | 4.2848 | 10.4658 | | | | 3.8048 |
| BLND1SU | LV 1 Rate Demand Urban | Obsolete | 1,446.01 | | 13.6212 | 11.5236 | 5.6170 | 10.2650 | | | | |
| BHND3AO | HV ToU mthly Demand | Default | 6,496.79 | - | 3.1829 | 2.7928 | 2.3004 | | 8.4547 | 7.6495 | 2.2891 | |
| BHNS1AO | HV ToU avg daily Demand | Obsolete | 6,314.68 | - | 3.1454 | 2.7985 | 2.2933 | | 8.9528 | 8.1002 | 2.4239 | |
| BHND1CO | HV 1 Rate Demand Central | Obsolete | 8,891.62 | - | 6.3707 | 6.1910 | 2.8764 | 11.4870 | | | | |
| BHND1SO | HV 1 Rate Demand South | Obsolete | 6,627.76 | - | 5.7925 | 5.6573 | 4.1186 | 8.2955 | | | | 3.0551 |
| BSSD3AO | Subtransmission 3 Rate Demand | Default | 6,449.02 | - | 3.8614 | 2.3208 | 1.9336 | | 3.2627 | 2.3260 | 0.9272 | |
| BLNP1AO | LV Public Lighting NUOS | Default | 295.34 | 15.1061 | - | - | - | | | | | |
| BLNP3AO | LV Public Lighting ToU NUOS | Default | - | - | 16.1663 | 13.6420 | 6.6019 | | | | | |

* These tariffs are the default for customers that do not have interval metering, and optional for other customers who meet the eligibility criteria

** These tariffs are the default for all new connections, meter upgrades and new technology installations and is optional for existing premises that have Interval capable meter

Indicative 2021/22 – Network Use of System (NUOS) charges

| \$2018/19 | | | NAC | Energy c/kWh | | | | Demand \$/kVA/mth | | | | Capacity \$/kVA/mth |
|-------------|--------------------------------|------------|----------|--------------|---------|----------|----------|-------------------|---------|----------|----------|---------------------|
| Tariff Code | Description | Status | \$/year | Anytime | Peak | Shoulder | Off Peak | Anytime | Peak | Shoulder | Off Peak | Anytime |
| BLNN2AU | Residential Anytime | Default * | 296.22 | 10.0461 | | | | | | | | |
| BLNT3AU | Residential ToU | Optional | 296.22 | - | 13.5009 | 11.2839 | 4.3053 | | | | | |
| BLNT3AL | Residential ToU_Interval meter | Default ** | 296.22 | - | 14.0062 | 10.8619 | 4.3053 | | | | | |
| BLND1AR | Residential-Opt in Demand | Optional | 296.22 | - | 4.2181 | 3.3182 | 2.0670 | | 3.7903 | | - | |
| BLNC1AU | Energy Saver 1 | Optional | 31.48 | 2.1697 | - | - | - | | | | | |
| BLNC2AU | Energy Saver 2 | Optional | 31.48 | 4.5861 | - | - | - | | | | | |
| BLNN1AU | Small Business Anytime | Default * | 298.26 | 13.8892 | - | - | - | | | | | |
| BLNT2AU | ToU < 100MWh | Optional | 1,674.45 | - | 14.3891 | 12.0980 | 6.3068 | | | | | |
| BLNT2AL | Business ToU_Interval meter | Default ** | 509.78 | - | 14.9169 | 11.6572 | 6.1044 | | | | | |
| BLNT1AO | ToU > 100 MWh/yr | Default | 1,674.45 | - | 14.3891 | 12.0980 | 6.3068 | | | | | |
| BLND1AB | Small Business-Opt in Demand | Optional | 509.78 | - | 6.5975 | 5.0095 | 2.9062 | | 6.1166 | | - | |
| BLNT1SU | ToU > 100 MWh/yr South | Obsolete | 2,353.59 | | 15.1664 | 12.1903 | 6.4327 | | | | | |
| BLND3AO | LV ToU Demand 3 Rate | Default | 5,212.31 | - | 4.2377 | 3.6004 | 2.3854 | | 9.6854 | 8.7933 | 2.0834 | |
| BLND3TO | LV ToU Demand-alternate tariff | Optional | 5,212.31 | - | 12.8371 | 10.5009 | 4.6203 | | 11.3037 | | | - |
| BLNDTRS | Transitional Demand | Specific | 4,622.67 | - | 5.9296 | 5.0167 | 3.0390 | | 8.0711 | 7.3278 | 1.7362 | |
| BLNS1AO | LV ToU avg daily Demand | Obsolete | 5,374.35 | | 3.9036 | 3.3324 | 2.2696 | | 10.5982 | 9.5888 | 2.4507 | |
| BLND1CO | LV 1 Rate Demand Central | Obsolete | 6,929.42 | | 5.9980 | 5.0239 | 2.7757 | 15.7573 | | | | |
| BLND1SR | LV 1 Rate Demand Rural | Obsolete | 5,374.35 | | 12.3464 | 10.1315 | 4.2892 | 10.4658 | | | | 3.8048 |
| BLND1SU | LV 1 Rate Demand Urban | Obsolete | 1,446.01 | | 13.9041 | 11.3815 | 5.6214 | 10.2650 | | | | |
| BHND3AO | HV ToU mthly Demand | Default | 6,452.00 | - | 3.2411 | 2.7843 | 2.3027 | | 8.3965 | 7.5968 | 2.2733 | |
| BHNS1AO | HV ToU avg daily Demand | Obsolete | 6,271.15 | - | 3.1925 | 2.7994 | 2.2957 | | 8.8911 | 8.0443 | 2.4072 | |
| BHND1CO | HV 1 Rate Demand Central | Obsolete | 8,891.62 | - | 6.5046 | 6.2351 | 2.8807 | 11.4870 | | | | |
| BHND1SO | HV 1 Rate Demand South | Obsolete | 6,627.76 | - | 5.9148 | 5.7120 | 4.1229 | 8.2955 | | | | 3.0551 |
| BSSD3AO | Subtransmission 3 Rate Demand | Default | 6,404.56 | - | 3.8630 | 2.3221 | 1.9348 | | 3.2402 | 2.3099 | 0.9208 | |
| BLNP1AO | LV Public Lighting NUOS | Default | 298.26 | 15.0254 | - | - | - | | | | | |
| BLNP3AO | LV Public Lighting ToU NUOS | Default | - | - | 16.4071 | 13.3692 | 6.5760 | | | | | |

* These tariffs are the default for customers that do not have interval metering, and optional for other customers who meet the eligibility criteria

** These tariffs are the default for all new connections, meter upgrades and new technology installations and is optional for existing premises that have Interval capable meter

Indicative 2022/23 – Network Use of System (NUOS) charges

| \$2018/19 | | | NAC | Energy c/kWh | | | | Demand \$/kVA/mth | | | | Capacity \$/kVA/mth |
|-------------|--------------------------------|------------|----------|--------------|---------|----------|----------|-------------------|---------|----------|----------|---------------------|
| Tariff Code | Description | Status | \$/year | Anytime | Peak | Shoulder | Off Peak | Anytime | Peak | Shoulder | Off Peak | Anytime |
| BLNN2AU | Residential Anytime | Default * | 298.05 | 9.9613 | | | | | | | | |
| BLNT3AU | Residential ToU | Optional | 298.05 | - | 13.5890 | 11.0236 | 4.2766 | | | | | |
| BLNT3AL | Residential ToU_Interval meter | Default ** | 298.05 | - | 14.0990 | 10.6143 | 4.2766 | | | | | |
| BLND1AR | Residential-Opt in Demand | Optional | 298.05 | - | 4.2204 | 3.2995 | 2.0620 | | 3.7504 | | - | |
| BLNC1AU | Energy Saver 1 | Optional | 31.14 | 2.1636 | - | - | - | | | | | |
| BLNC2AU | Energy Saver 2 | Optional | 31.14 | 4.5582 | - | - | - | | | | | |
| BLNN1AU | Small Business Anytime | Default * | 300.07 | 13.7646 | - | - | - | | | | | |
| BLNT2AU | ToU < 100MWh | Optional | 1,507.01 | - | 14.4775 | 11.8224 | 6.2578 | | | | | |
| BLNT2AL | Business ToU_Interval meter | Default ** | 509.36 | - | 15.0102 | 11.3949 | 6.0575 | | | | | |
| BLNT1AO | ToU > 100 MWh/yr | Default | 1,507.01 | - | 14.4775 | 11.8224 | 6.2578 | | | | | |
| BLND1AB | Small Business-Opt in Demand | Optional | 509.36 | - | 7.1413 | 5.3468 | 3.0294 | | 6.0522 | | - | |
| BLNT1SU | ToU > 100 MWh/yr South | Obsolete | 2,353.59 | | 15.3839 | 12.0039 | 6.4264 | | | | | |
| BLND3AO | LV ToU Demand 3 Rate | Default | 5,157.37 | - | 4.2360 | 3.5744 | 2.3774 | | 9.5833 | 8.7468 | 2.0614 | |
| BLND3TO | LV ToU Demand-alternate tariff | Optional | 5,157.37 | - | 12.9150 | 10.2657 | 4.5887 | | 11.1845 | | | - |
| BLNDTRS | Transitional Demand | Specific | 5,157.37 | - | 4.2360 | 3.5744 | 2.3774 | | 9.5833 | 8.7468 | 2.0614 | |
| BLNS1AO | LV ToU avg daily Demand | Obsolete | 5,374.35 | | 3.9034 | 3.3179 | 2.2634 | | 10.5982 | 9.5888 | 2.4507 | |
| BLND1CO | LV 1 Rate Demand Central | Obsolete | 6,929.42 | | 6.0258 | 4.9851 | 2.7690 | 15.7573 | | | | |
| BLND1SR | LV 1 Rate Demand Rural | Obsolete | 5,374.35 | | 12.4840 | 10.0022 | 4.2824 | 10.4658 | | | | 3.8048 |
| BLND1SU | LV 1 Rate Demand Urban | Obsolete | 1,446.01 | | 14.0729 | 11.2272 | 5.6146 | 10.2650 | | | | |
| BHND3AO | HV ToU mthly Demand | Default | 6,384.00 | - | 3.2393 | 2.7638 | 2.2941 | | 8.3079 | 7.5167 | 2.2493 | |
| BHNS1AO | HV ToU avg daily Demand | Obsolete | 6,205.05 | - | 3.1799 | 2.7879 | 2.2871 | | 8.7974 | 7.9595 | 2.3818 | |
| BHND1CO | HV 1 Rate Demand Central | Obsolete | 8,891.62 | - | 6.5424 | 6.1830 | 2.8741 | 11.4870 | | | | |
| BHND1SO | HV 1 Rate Demand South | Obsolete | 6,627.76 | - | 5.9408 | 5.6704 | 4.1162 | 8.2955 | | | | 3.0551 |
| BSSD3AO | Subtransmission 3 Rate Demand | Default | 6,337.05 | - | 3.8535 | 2.3163 | 1.9298 | | 3.2060 | 2.2856 | 0.9111 | |
| BLNP1AO | LV Public Lighting NUOS | Default | 300.07 | 14.8887 | - | - | - | | | | | |
| BLNP3AO | LV Public Lighting ToU NUOS | Default | - | - | 16.5143 | 13.0546 | 6.5240 | | | | | |

* These tariffs are the default for customers that do not have interval metering, and optional for other customers who meet the eligibility criteria

** These tariffs are the default for all new connections, meter upgrades and new technology installations and is optional for existing premises that have Interval capable meter

Indicative 2023/24 – Network Use of System (NUOS) charges

| \$2018/19 | | | NAC | Energy c/kWh | | | | Demand \$/kVA/mth | | | | Capacity \$/kVA/mth |
|-------------|--------------------------------|------------|----------|--------------|---------|----------|----------|-------------------|---------|----------|----------|---------------------|
| Tariff Code | Description | Status | \$/year | Anytime | Peak | Shoulder | Off Peak | Anytime | Peak | Shoulder | Off Peak | Anytime |
| BLNN2AU | Residential Anytime | Default * | 300.14 | 9.8847 | | | | | | | | |
| BLNT3AU | Residential ToU | Optional | 300.14 | - | 13.6879 | 10.7787 | 4.2508 | | | | | |
| BLNT3AL | Residential ToU_Interval meter | Default ** | 300.14 | - | 14.2032 | 10.3815 | 4.2508 | | | | | |
| BLND1AR | Residential-Opt in Demand | Optional | 300.14 | - | 4.2237 | 3.2817 | 2.0573 | | 3.7144 | | - | |
| BLNC1AU | Energy Saver 1 | Optional | 30.85 | 2.1580 | - | - | - | | | | | |
| BLNC2AU | Energy Saver 2 | Optional | 30.85 | 4.5330 | - | - | - | | | | | |
| BLNN1AU | Small Business Anytime | Default * | 302.14 | 13.6516 | - | - | - | | | | | |
| BLNT2AU | ToU < 100MWh | Optional | 1,356.31 | - | 14.5769 | 11.5627 | 6.2130 | | | | | |
| BLNT2AL | Business ToU_Interval meter | Default ** | 509.42 | - | 15.1151 | 11.1478 | 6.0146 | | | | | |
| BLNT1AO | ToU > 100 MWh/yr | Default | 1,356.31 | - | 14.5769 | 11.5627 | 6.2130 | | | | | |
| BLND1AB | Small Business-Opt in Demand | Optional | 509.42 | - | 7.7955 | 5.7533 | 3.1786 | | 5.9940 | | - | |
| BLNT1SU | ToU > 100 MWh/yr South | Obsolete | 2,353.59 | | 15.6058 | 11.8210 | 6.4200 | | | | | |
| BLND3AO | LV ToU Demand 3 Rate | Default | 5,107.85 | - | 4.2351 | 3.5495 | 2.3695 | | 9.4912 | 8.6628 | 2.0417 | |
| BLND3TO | LV ToU Demand-alternate tariff | Optional | 5,107.85 | - | 13.0027 | 10.0439 | 4.5596 | | 11.0771 | | | - |
| BLNDTRS | Transitional Demand | Specific | 5,107.85 | - | 4.2351 | 3.5495 | 2.3695 | | 9.4912 | 8.6628 | 2.0417 | |
| BLNS1AO | LV ToU avg daily Demand | Obsolete | 5,374.35 | | 3.9033 | 3.3037 | 2.2571 | | 10.5982 | 9.5888 | 2.4507 | |
| BLND1CO | LV 1 Rate Demand Central | Obsolete | 6,929.42 | | 6.0543 | 4.9469 | 2.7622 | 15.7573 | | | | |
| BLND1SR | LV 1 Rate Demand Rural | Obsolete | 5,374.35 | | 12.6246 | 9.8753 | 4.2756 | 10.4658 | | | | 3.8048 |
| BLND1SU | LV 1 Rate Demand Urban | Obsolete | 1,446.01 | | 14.2453 | 11.0757 | 5.6078 | 10.2650 | | | | |
| BHND3AO | HV ToU mthly Demand | Default | 6,322.69 | - | 3.2381 | 2.7441 | 2.2857 | | 8.3927 | 7.2956 | 2.2278 | |
| BHNS1AO | HV ToU avg daily Demand | Obsolete | 6,145.47 | - | 3.1677 | 2.7769 | 2.2788 | | 8.7129 | 7.8831 | 2.3589 | |
| BHND1CO | HV 1 Rate Demand Central | Obsolete | 8,891.62 | - | 6.5812 | 6.1318 | 2.8674 | 11.4870 | | | | |
| BHND1SO | HV 1 Rate Demand South | Obsolete | 6,627.76 | - | 5.9676 | 5.6294 | 4.1096 | 8.2955 | | | | 3.0551 |
| BSSD3AO | Subtransmission 3 Rate Demand | Default | 6,276.20 | - | 3.8442 | 2.3106 | 1.9250 | | 3.1752 | 2.2636 | 0.9024 | |
| BLNP1AO | LV Public Lighting NUOS | Default | 302.14 | 14.7648 | - | - | - | | | | | |
| BLNP3AO | LV Public Lighting ToU NUOS | Default | - | - | 16.6346 | 12.7583 | 6.4765 | | | | | |

* These tariffs are the default for customers that do not have interval metering, and optional for other customers who meet the eligibility criteria

** These tariffs are the default for all new connections, meter upgrades and new technology installations and is optional for existing premises that have Interval capable meter

\$2018/19

| Tariff Code | Customer | Year | NAC | Energy c/kWh | | | | Demand \$/kVA/mth | | | | Demand \$/KW/mth |
|-------------|------------|---------|---------|--------------|------|----------|----------|-------------------|------|----------|----------|------------------|
| | | | \$/year | Anytime | Peak | Shoulder | Off Peak | Anytime | Peak | Shoulder | Off Peak | Anytime |
| BSS21SU | [REDACTED] | 2018/19 | | | | | | | | | | |
| | | 2019/20 | | | | | | | | | | |
| | | 2020/21 | | | | | | | | | | |
| | | 2021/22 | | | | | | | | | | |
| | | 2022/23 | | | | | | | | | | |
| | | 2023/24 | | | | | | | | | | |
| BSS22SU | [REDACTED] | 2018/19 | | | | | | | | | | |
| | | 2019/20 | | | | | | | | | | |
| | | 2020/21 | | | | | | | | | | |
| | | 2021/22 | | | | | | | | | | |
| | | 2022/23 | | | | | | | | | | |
| | | 2023/24 | | | | | | | | | | |
| BSS24NU | [REDACTED] | 2018/19 | | | | | | | | | | |
| | | 2019/20 | | | | | | | | | | |
| | | 2020/21 | | | | | | | | | | |
| | | 2021/22 | | | | | | | | | | |
| | | 2022/23 | | | | | | | | | | |
| | | 2023/24 | | | | | | | | | | |
| BSS25AO | [REDACTED] | 2018/19 | | | | | | | | | | |
| | | 2019/20 | | | | | | | | | | |
| | | 2020/21 | | | | | | | | | | |
| | | 2021/22 | | | | | | | | | | |
| | | 2022/23 | | | | | | | | | | |
| | | 2023/24 | | | | | | | | | | |
| BSS26AO | [REDACTED] | 2018/19 | | | | | | | | | | |
| | | 2019/20 | | | | | | | | | | |
| | | 2020/21 | | | | | | | | | | |
| | | 2021/22 | | | | | | | | | | |
| | | 2022/23 | | | | | | | | | | |
| | | 2023/24 | | | | | | | | | | |

\$2018/19

| Tariff Code | Customer | Year | NAC | Energy c/kWh | | | | Demand \$/kVA/mth | | | | Demand \$/KW/mth |
|-------------|------------|---------|------------|--------------|------------|------------|------------|-------------------|------|----------|----------|------------------|
| | | | \$/year | Anytime | Peak | Shoulder | Off Peak | Anytime | Peak | Shoulder | Off Peak | Anytime |
| BSS27AO | [REDACTED] | 2018/19 | [REDACTED] | | [REDACTED] | [REDACTED] | [REDACTED] | [REDACTED] | | | | |
| | | 2019/20 | [REDACTED] | | [REDACTED] | [REDACTED] | [REDACTED] | [REDACTED] | | | | |
| | | 2020/21 | [REDACTED] | | [REDACTED] | [REDACTED] | [REDACTED] | [REDACTED] | | | | |
| | | 2021/22 | [REDACTED] | | [REDACTED] | [REDACTED] | [REDACTED] | [REDACTED] | | | | |
| | | 2022/23 | [REDACTED] | | [REDACTED] | [REDACTED] | [REDACTED] | [REDACTED] | | | | |
| | | 2023/24 | [REDACTED] | | [REDACTED] | [REDACTED] | [REDACTED] | [REDACTED] | | | | |
| CRNP1 | [REDACTED] | 2018/19 | [REDACTED] | | [REDACTED] | [REDACTED] | [REDACTED] | | | | | [REDACTED] |
| | | 2019/20 | [REDACTED] | | [REDACTED] | [REDACTED] | [REDACTED] | | | | | [REDACTED] |
| | | 2020/21 | [REDACTED] | | [REDACTED] | [REDACTED] | [REDACTED] | | | | | [REDACTED] |
| | | 2021/22 | [REDACTED] | | [REDACTED] | [REDACTED] | [REDACTED] | | | | | [REDACTED] |
| | | 2022/23 | [REDACTED] | | [REDACTED] | [REDACTED] | [REDACTED] | | | | | [REDACTED] |
| | | 2023/24 | [REDACTED] | | [REDACTED] | [REDACTED] | [REDACTED] | | | | | [REDACTED] |
| CRNP2 | [REDACTED] | 2018/19 | [REDACTED] | | [REDACTED] | [REDACTED] | [REDACTED] | | | | | [REDACTED] |
| | | 2019/20 | [REDACTED] | | [REDACTED] | [REDACTED] | [REDACTED] | | | | | [REDACTED] |
| | | 2020/21 | [REDACTED] | | [REDACTED] | [REDACTED] | [REDACTED] | | | | | [REDACTED] |
| | | 2021/22 | [REDACTED] | | [REDACTED] | [REDACTED] | [REDACTED] | | | | | [REDACTED] |
| | | 2022/23 | [REDACTED] | | [REDACTED] | [REDACTED] | [REDACTED] | | | | | [REDACTED] |
| | | 2023/24 | [REDACTED] | | [REDACTED] | [REDACTED] | [REDACTED] | | | | | [REDACTED] |

Modification History

| Version | Date | Description |
|---------|---------------|---------------------------------------|
| 1 | December 2018 | Original version |
| 2 | January 2019 | Confidential rates added and redacted |