



Supporting
document 5.25.2

Clare Photographs

2020-25 Revised
Regulatory Proposal
10 December 2019



Clare Depot Asset Condition Photographs

- 31 Clare - 14 Lennon Street
- 31A Office Building
- 31B Engineering Office / Lunchroom Building
- 31C Workshop
- 31D Truck Shelter
- 31E External Works



Bitumen Pavement Condition



Clare Depot Asset Condition Photographs



- Large areas of bitumen to the rear of the yard and heavy vehicle driveways in very poor condition with full-thickness cracking, potholing and subsidence.



- Large areas of bitumen to the rear of the yard and heavy vehicle driveways in very poor condition with full-thickness cracking and potholing.



- Large areas of bitumen to the rear of the yard and heavy vehicle driveways in very poor condition.



- Deep cracking to bitumen and concrete stormwater drains



- Full-thickness cracking and breakdown of concrete drain and heavy vehicle driveway



- Breakdown of concrete spoon drain

Truck Store





- Broken and degraded pavements to the loading areas of the rear side of the truck store.



- Broken and degraded pavements to the loading areas of the rear side of the truck store.



- Current truck store from can only accommodate half the length of an EWP vehicle and other trucks



- Damage to internal wall of the front side of the truck store

Workshop / Store





- Original Workshop Building cirqa 1967

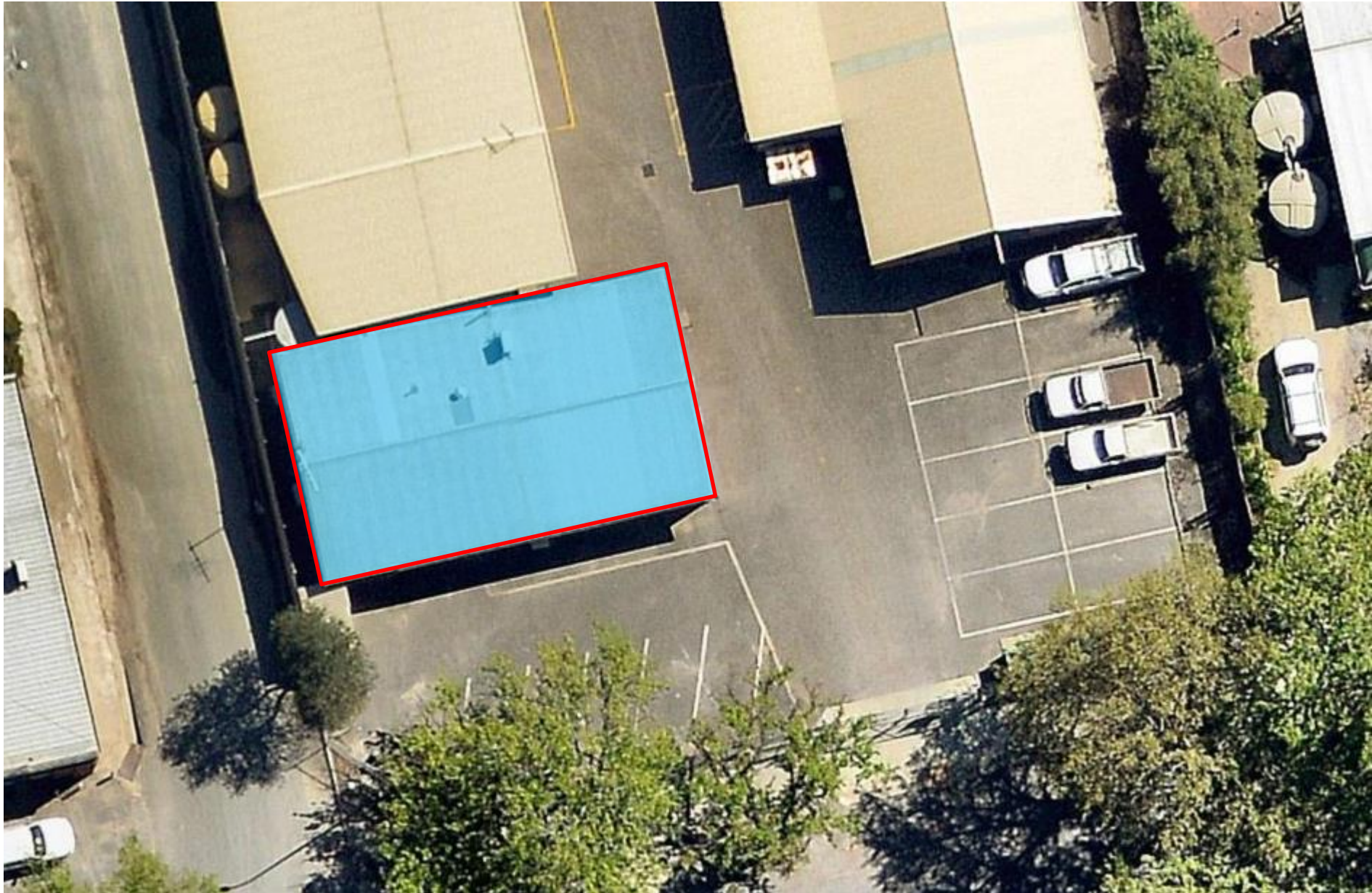


- Original Jarrah Columns and Trusses to Workshop framing starting to show signs of cracking to be replaced by steel members and high level rafters



- Storage Height restrictions with Jarrah Trusses

Office Admin Building and Amenities





- Brick Admin Building Circa 1967



- Male Toilets and showers original fit-out and in poor condition



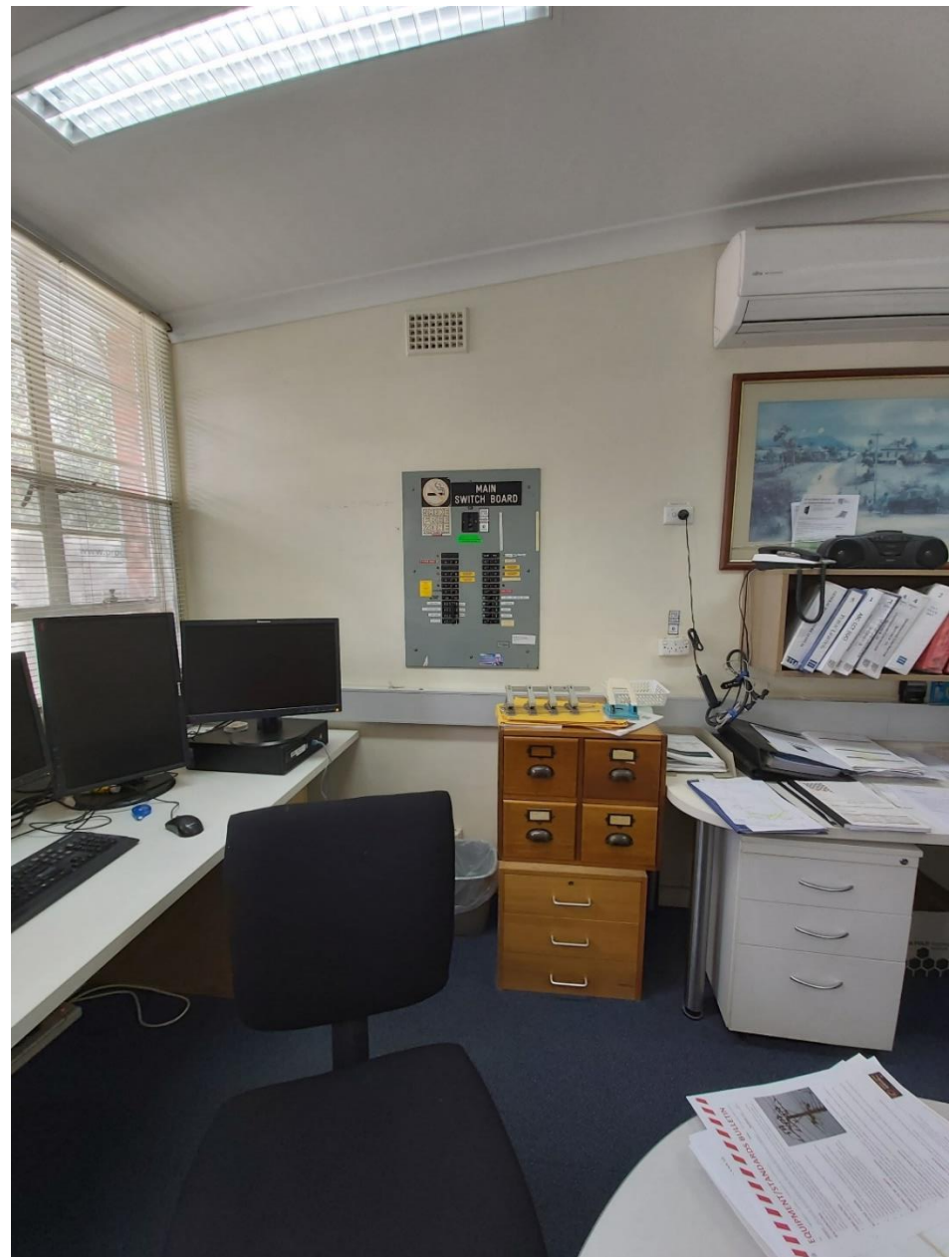
- Mens Urinal – original fit-out



- Ladies toilet and shower all as per original fit out 1967



- Admin building internal fit-out as per original and includes asbestos floor tiles underneath



- Admin building internal fit-out as per original and includes asbestos floor tiles underneath.